

# This is how to delete Recovery partition and Recovery partition 450 MB on Windows 10

Recovery partition (recovery partition) is a separate partition on the hard drive on your computer or SSD and used to restore or reinstall the operating system in case the system fails.

Recovery partition (recovery partition) is a separate partition on the hard drive on your computer or SSD and used to restore or reinstall the operating system in case the system fails.

However, starting Windows 10, users can reinstall or reset the system without resorting to the help of Recovery partition, so Windows 10 users can delete Recovery partition to free drive space. plate.

## 1. What is Recovery partition?

Recovery partition (recovery partition) is a separate partition on the hard drive on your computer or SSD and used to restore or reinstall the operating system in case the system fails.

Recovery partition is extremely useful in case if you want to restore Windows 10 or in case you want to reset factory Windows 10 settings.

However, starting Windows 10, users can reinstall or reset the system without resorting to the help of Recovery partition, so Windows 10 users can delete Recovery partition to free drive space. plate.

Windows 10 allows you to create a USB recovery drive and use this USB Recovery drive to restore the computer in case of need.

Removing a Recovery partition is not too difficult, here are some ways you can apply to delete Recovery partition on Windows 10.

## 2. Delete Recovery partition on Windows 10

**Important note:** these methods only apply to OEM recovery partitions.

Windows 10 does not allow users to delete existing Recovery partitions on the system without creating a USB recovery drive. In fact, you can only access to delete Recovery partition after being in a new Recovery drive.

### Step 1:

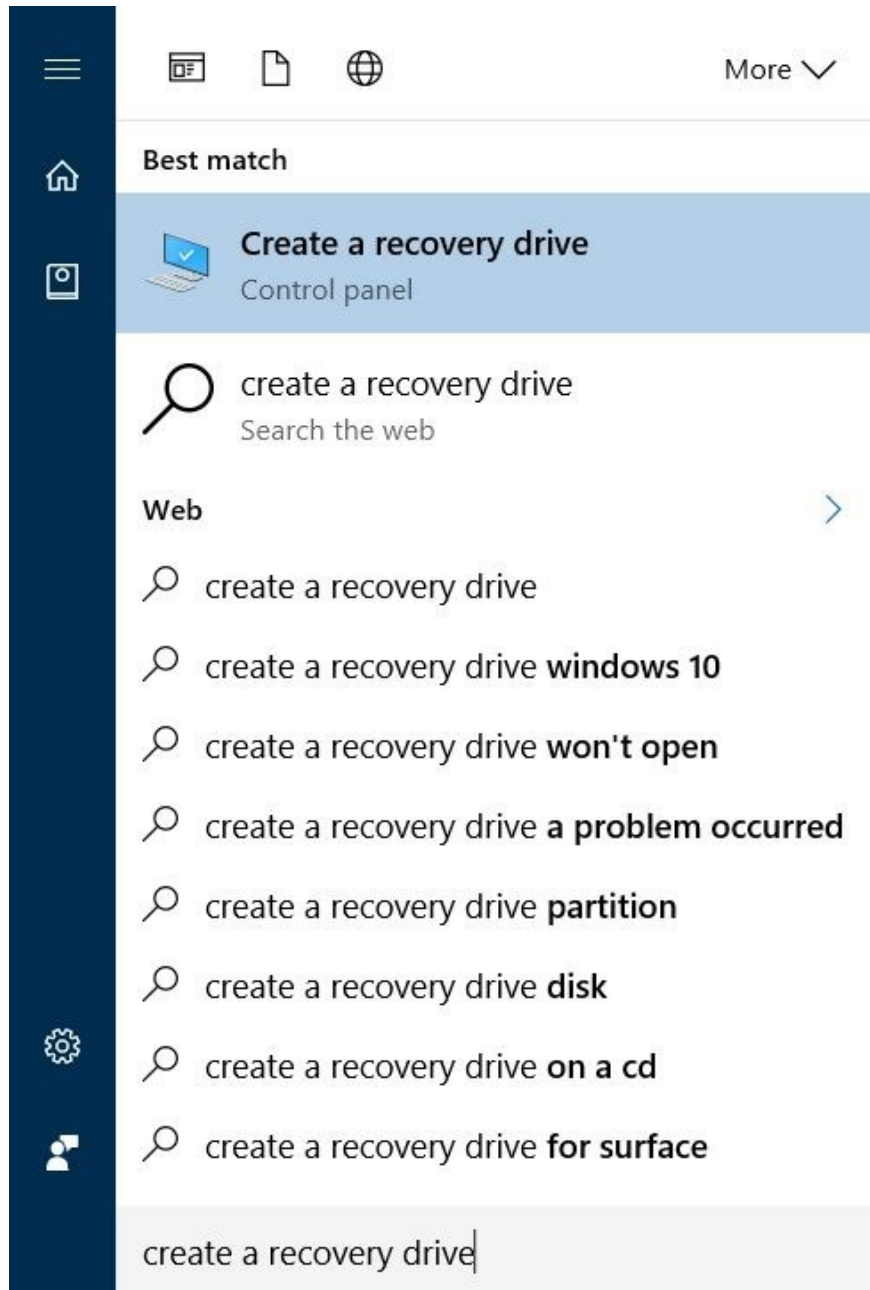
Use a USB drive with at least 8 GB capacity, then plug the USB drive into a Windows 10 computer and back up all data to a safe location because all data on the USB drive will be erased during the process. create Recovery

drive.

And the Network Administrator mentioned above, Windows 10 does not allow users to delete Recovery partition without creating a USB Recovery drive.

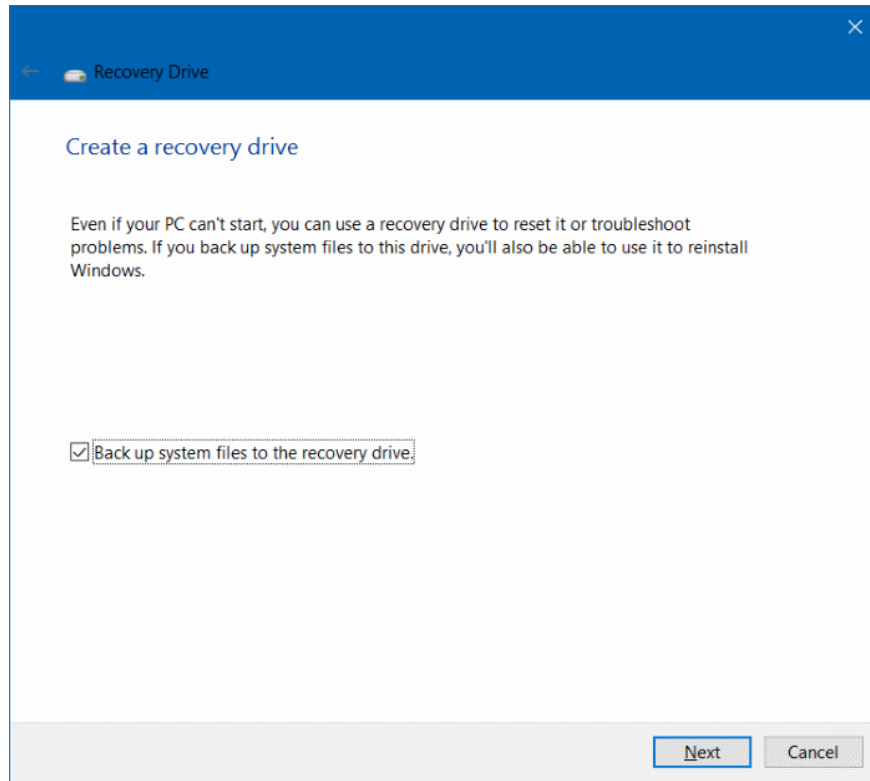
### Step 2:

Enter **Create a recovery drive** into the Search box on the Start Menu or Search box on the Taskbar and then press Enter to open Recovery drive wizard.



### Step 3:

On the Recovery drive window, select the option **Back up system files to the recovery drive** and click **Next** .



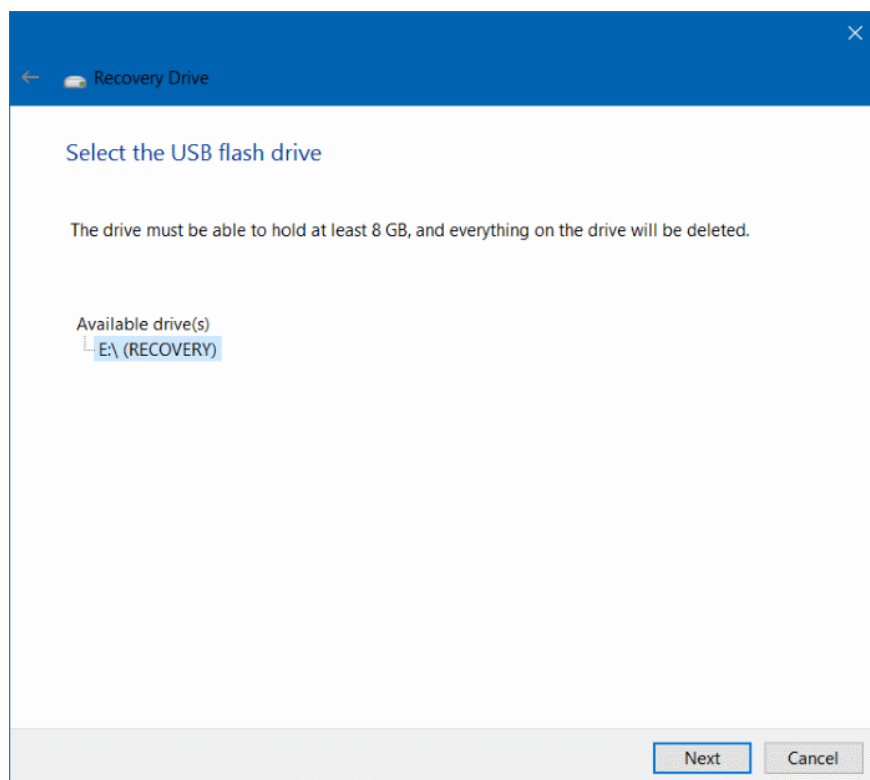
#### **Step 4:**

Wait a few seconds, now on the screen you will see a window like the one below, here select the USB drive you want to use to create the Recovery drive.

#### **Note:**

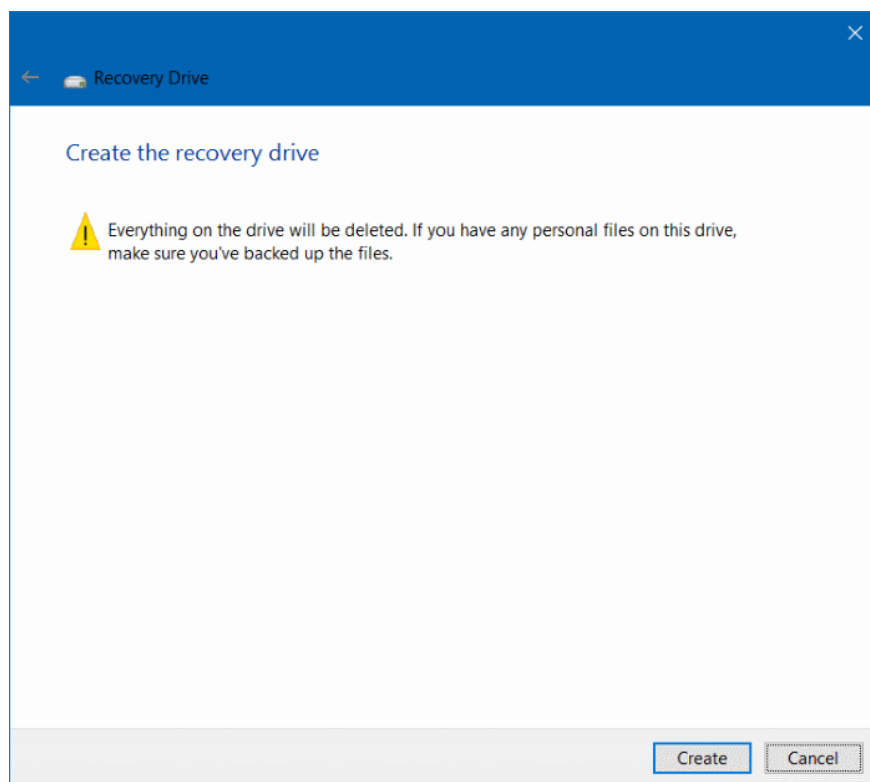
Backing up all data on the USB drive to a safe location by the process of creating a Recovery drive will erase the data on the USB drive.

After selecting the USB drive, click **Next** to continue.

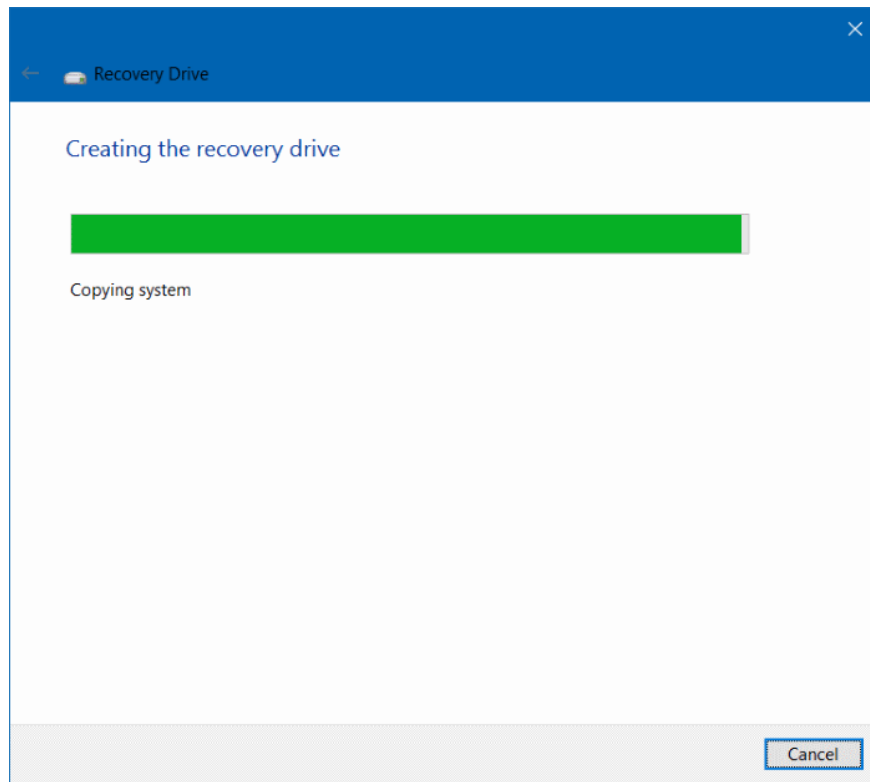


### Step 5:

Now on the screen you will see the message: **'Everything on the drive will be deleted. Nếu bạn có tệp tin này này này, không thể xác thực bạn đã sao lưu tệp tin.'**

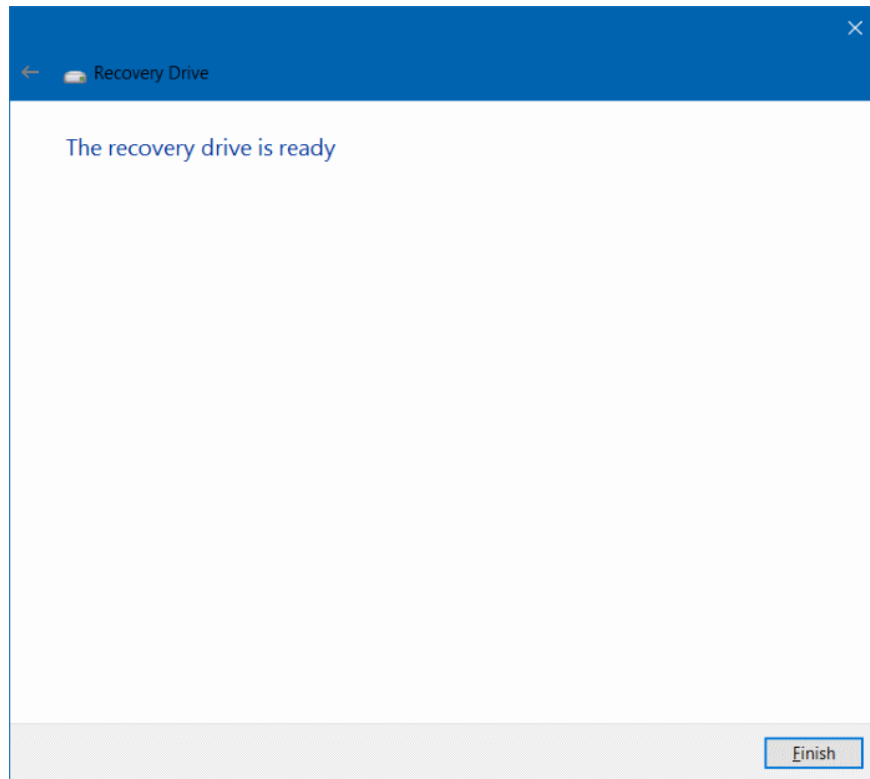


You just need to click the **Create** button to start the process of creating a Recovery drive on Windows 10. The process will take a long time, so you should wait patiently.



### Step 6:

After the process is complete, you will see the **Delete** link for **the partition recovery from your PC**. To delete the Recovery partition on Windows 10, click on the **Delete the partition recovery link from your PC**, then click **Delete**.

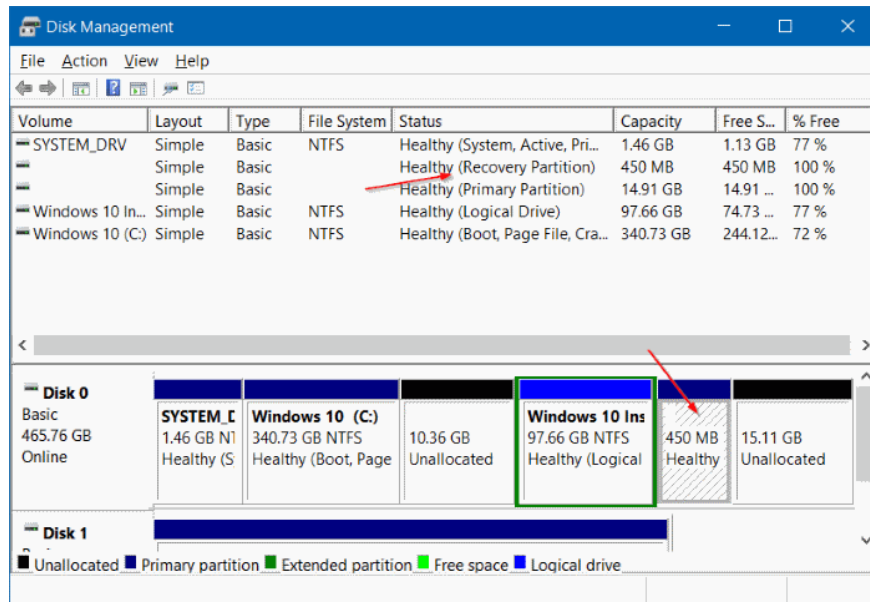


However on many Windows 10 computers do not display the **Delete the recovery partition link from your PC** on the screen, then you can apply the solution thanks to the support of the 3rd tool. Network administrators will mention Come in section 3 below.

## 2. Delete 450 MB Recovery partition on Windows 10

As you know, Windows 10 creates a 450 MB Recovery partition (recovery partition) during the process when you install Windows 10 or upgrade the old version to Windows 10.

450 MB Recovery partition created by Windows 10 allows users to boot into Windows Recovery environment (Windows recovery) in case the system fails. Once booted into Windows Recovery environment, users can fix errors and restore their Windows computers using restore points (Restore points) or System images created earlier.



## Should I delete the 450 MB Recovery partition?

If the free space on your HDD or SSD is quite a lot, then deleting Recovery partition 450 MB is not recommended. In addition, if your computer has less free space, deleting Recovery 450 MB partition does not make any sense. In fact, you can free up 450 MB by deleting folders Download or uninstall programs, applications or software that you don't use, or delete temporary files on Windows 10.

And you need to note one more point that you will not be able to use the Windows Recovery option if you delete the 450 MB Recovery partition. Or in other words, if you delete 450 MB Recovery partition, you cannot boot your computer in Recovery environment to fix Windows 10 installation errors.

However, if you want, you can still delete the Recovery partition.

Warning: It is recommended that you back up all data to a safe location before deleting the 450 MB Recovery partition to prevent possible bad situations.

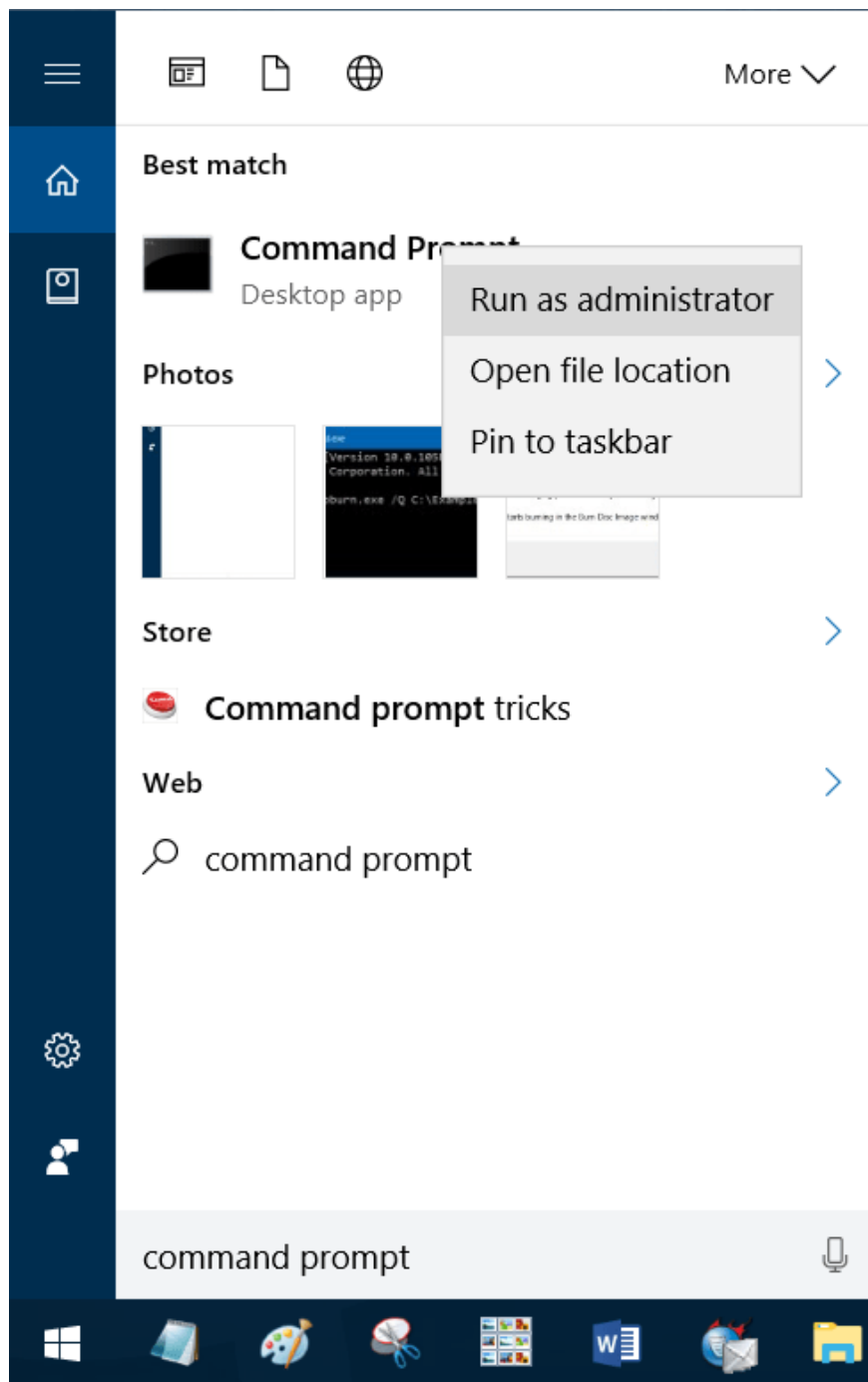
## Steps to delete Recovery partition 450 MB on Windows 10:

To delete 450 MB Recovery partition on Windows 10, follow the steps below:

### Step 1:

Open Command Prompt under Admin. To do this, right-click **the Start button** in the bottom left corner of the Taskbar, then click **Command Prompt (Admin)**.

A User Account Control message window will appear on your screen, and click **Yes**.



## Step 2:

On the Command Prompt window, enter each of the commands below, after each statement, press Enter to execute each statement.

Diskpart

Press Enter

List disk

```

Administrator: Command Prompt
Microsoft Windows [Version 10.0.14393]
(c) 2016 Microsoft Corporation. All rights reserved.

C:\WINDOWS\system32>Diskpart

Microsoft DiskPart version 10.0.14393.0

Copyright (C) 1999-2013 Microsoft Corporation.
On computer: HELLO

DISKPART> List disk

   Disk ###  Status         Size      Free      Dyn  Gpt
   -----  -
   Disk 0    Online        465 GB    1024 KB
   Disk 1    Online         14 GB         0 B

```

List disk command to display all drives connected to your Windows computer, including portable hard drives (USB drives, .). So please carefully note the hardware / SSD Disk number, including the Recovery partition (recovery partition) you want to delete. Usually if there is only one HDD / SSD, the Disk number is 0

### Step 3:

Next enter each of the following commands into the Command Prompt window, after each statement you also press Enter to execute each command one by one.

Select disk n

Note that the above command replaces "n" with the Disk number of the HDD / SSD drive containing the Recovery partition.

Volume list

```

DISKPART> List volume

   Volume ###  Ltr  Label          Fs      Type          Size      Status       Info
   -----  -
   Volume 0                SYSTEM_DRV    NTFS   Partition    1500 MB    Healthy      System
   Volume 1    C   Windows 10    NTFS   Partition    340 GB    Healthy      Boot
   Volume 2    D   Windows 10    NTFS   Partition     97 GB    Healthy
   Volume 3                NTFS         Partition    450 MB    Healthy      Hidden

```

The above command displays all partitions on the drive you selected, including Recovery partition.

Ch?n kích c? n

Note, replace "n" with the Volume number of the Recovery partition you want to delete.

You can easily identify the Recovery partition by looking at the partition size. Recovery partition on Windows 10 is 450 MB in size.

## Delete volume

```
Administrator: Command Prompt - Diskpart
Microsoft Windows [Version 10.0.14393]
(c) 2016 Microsoft Corporation. All rights reserved.

C:\WINDOWS\system32>Diskpart

Microsoft DiskPart version 10.0.14393.0

Copyright (C) 1999-2013 Microsoft Corporation.
On computer: HELLO

DISKPART> List disk

   Disk ###  Status         Size      Free      Dyn  Gpt
   -----  -
   Disk 0    Online        465 GB    1024 KB
   Disk 1    Online        14 GB     0 B

DISKPART> Select Disk 0

Disk 0 is now the selected disk.

DISKPART> List volume

   Volume ###  Ltr  Label          Fs      Type        Size      Status      Info
   -----  -
   Volume 0    Ltr  SYSTEM_DRV    NTFS    Partition   1500 MB    Healthy    System
   Volume 1    C    Windows 10    NTFS    Partition   340 GB    Healthy    Boot
   Volume 2    D    Windows 10    NTFS    Partition   97 GB     Healthy
   Volume 3                                NTFS    Partition   450 MB    Healthy    Hidden

DISKPART> Select volume 3

Volume 3 is the selected volume.

DISKPART> Delete volume
```

The above command will delete the Recovery partition you selected on your Windows 10 computer. If you encounter any errors, it may be because you have not run the Command Prompt under Admin.

You can also use the 3rd tool to delete Recovery partition 450 MB on Windows 10.

### 3. Use the 3rd tool to delete Recovery partition and Recovery partition 450 MB on Windows 10

It is recommended that you create a System image on your Windows 10 computer or back up all data to a portable hard drive (for example, a USB drive, etc.) before proceeding to delete the system drive as most likely Your computer will not boot.

With this second solution, thanks to the support of the 3rd application - MiniTool Partition Wizard Free to delete Recovery partition on Windows 10 computer.

#### Step 1:

Download MiniTool Partition Wizard Free to your computer and install.

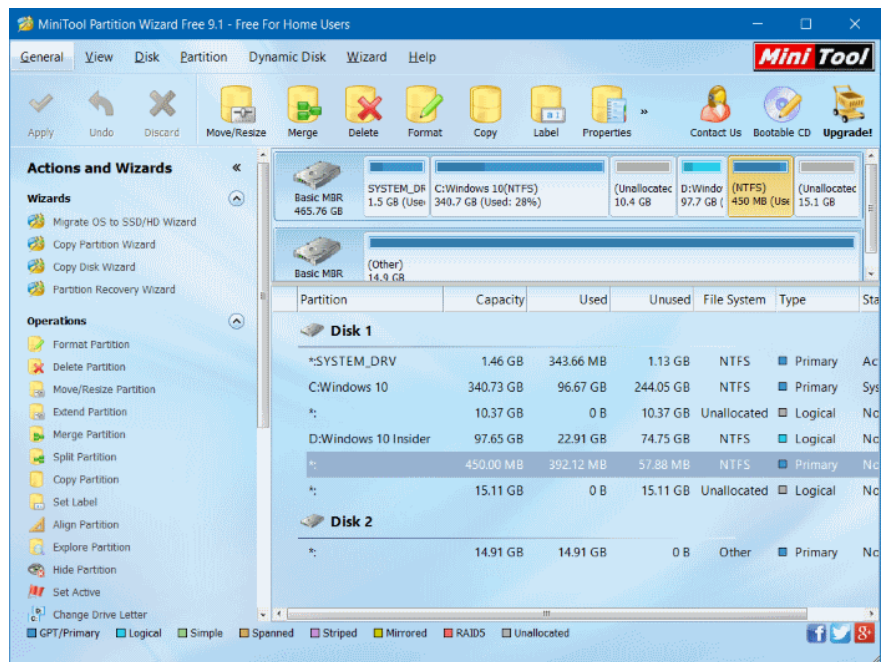
Download MiniTool Partition Wizard Free to your computer and install it here.

### Step 2:

After installation is complete, open MiniTool Partition Wizard Free.

### Step 3:

Right-click the **Recovery** partition and then click **Delete** .



### Step 4:

Finally click **Apply** to delete the Recovery partition and free up disk space.

### Step 5:

You can create a new drive by right-clicking and selecting **Create** and following the instructions on the screen.

### Refer to some of the following articles:

1. This is how to check your Windows 10 is Win copyright or not?
1. Here's how to bring the File Explorer interface to Windows 10 like File Explorer Windows 7
1. Here's how to uninstall Windows 10 to return to using Windows 7 or 8.1

### Good luck!

You finished reading the article "**This is how to delete Recovery partition and Recovery partition 450 MB on Windows 10**" edited by the [TipsMake](#) team. We hope this article has provided you with many useful tech tips and tricks. You can search for similar articles on tips and guides. Thank you for reading and for following us regularly.

