

ThinkPad Edge is not convincing

Edge is Lenovo's risky 'move' to expand the ThinkPad line with a more youthful design.

Edge is Lenovo's risky "move" in expanding the ThinkPad line with a more youthful design.

Edge 13 is the new ThinkPad ThinkPad revamped and manufactured. Inheriting the reputation of a business laptop that once owned by IBM, ThinkPad Edge seems to target users who are dynamic young people who often have to move. The device is sold in three colors: black, red and glossy black.

Model tested and also distributed in Vietnam market, with glossy black shell and detailed configuration including Intel Core 2 Duo SU7300 low-speed processor 1.3 GHz (3MB cache), 2GB RAM, Intel GS45 Express mobile graphics chip, 250 GB hard drive.



Edge black gray version. (Photo: Tuan Hung) .

Compared to the two sleek shell models that are shiny red and glossy black, the machine introduced this time has a black-gray plastic surface with no fingerprints and a solid feel. The edges are also rounded with silver edges, not angled like the traditional ThinkPad. Edge is decorated with two ThinkPad logos on both the top and the inside. In it, the dot in I will become a power light.

ThinkPad Edge has a detailed size of 33.2 x 22.8 x 3 cm and weighs 1.7 kg with 6 cell battery included so it is easy to carry around on long trips.



Left and right edges of the machine. (Photo: Tuan Hung) .

Edge owns quite a lot of connection ports, the left side includes Kensington, VGA, HDMI, LAN, USB keys. Right side is the power jack, 2 USB ports, headphone jack and 5-type memory card reader. Unfortunately, this model does not own eSATA high-speed data exchange port. In addition, optical drive is not integrated to reduce weight and machine size, so it will cause a lot of inconvenience to users.

Meanwhile, the front edge is not integrated with any connection ports but swept down to make room for the speaker system below. Due to its small size to prioritize "mobility" and convenience, it is only heard in rooms with a small size, less than 20 m². However, the sound quality of this speaker is also quite good, the sound is clear and clear though the bass is small and the speakers do not play stereo sound.



Chiclet keyboard has good bounce, but it takes time to get used to. (Photo: Tuan Hung) .

Different from the traditional ThinkPad, Edge is integrated chiclet keyboard with curved claw design to make a difference. But it is this design that makes new users difficult to get used to. When operating on the keyboard feel "embarrassed" hands and press the key is not standard. However, the bounce and sensitivity are quite good. Another difference in this keyboard is that Lenovo boldly changed the function buttons F1, F2, F3 . to the secondary button (ie want to use these keys the user must press simultaneously Fn function key in the bottom left corner of the keyboard).

In addition, the device also owns a multi-touch mouse keyboard. Through testing, the sensitivity of this touchpad is very good, not sticking fingerprints, swiping to zoom in exactly the only thing unfortunate is that the two mouse buttons subsided a bit deep when used.



Speakers are arranged on the underside. (*Photo: Tuan Hung*) .

ThinkPad Edge has a 13.3-inch mirror screen with a resolution of 1366 x 768 pixels showing very fresh and sharp colors. When testing high-definition video, HD and Full HD can be watched from tilt angles, even from 90 degrees. This can be considered as the advantage of the machine compared to other mirror screen laptops often have narrow viewing angles. However, when used in the office with neon lights, this screen is still quite uncomfortable, users only have a remedy to increase the screen brightness to the maximum to prevent glare.

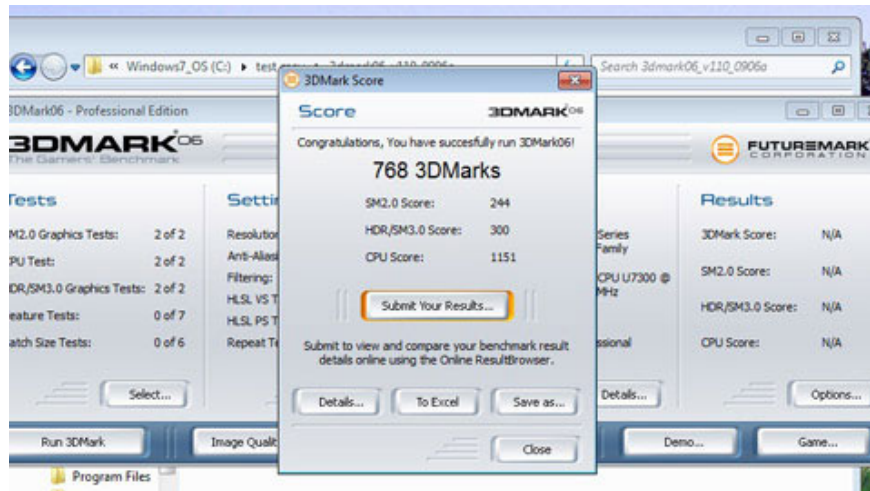
This new model is also provided by Lenovo with the ThinkVantage Tools management tool with many useful features such as password management, hardware management update (driver), battery management, and machine performance (integrated into the taskbar help display the remaining usage time or time to fully charge the battery when plugging in the power cord), backup and restore data, manage and prevent the device.

See more performance, heat dissipation and battery life.

Performance, heat dissipation and battery life

Edge has two options for processors that are AMD or Intel. The model sold in the immediate future in Vietnam will be equipped with Intel Core 2 Duo SU7300 processor with 1.3 GHz speed, 2GB RAM, mobile Intel Intel Graphics 4545 graphics chip and 250 GB hard drive.

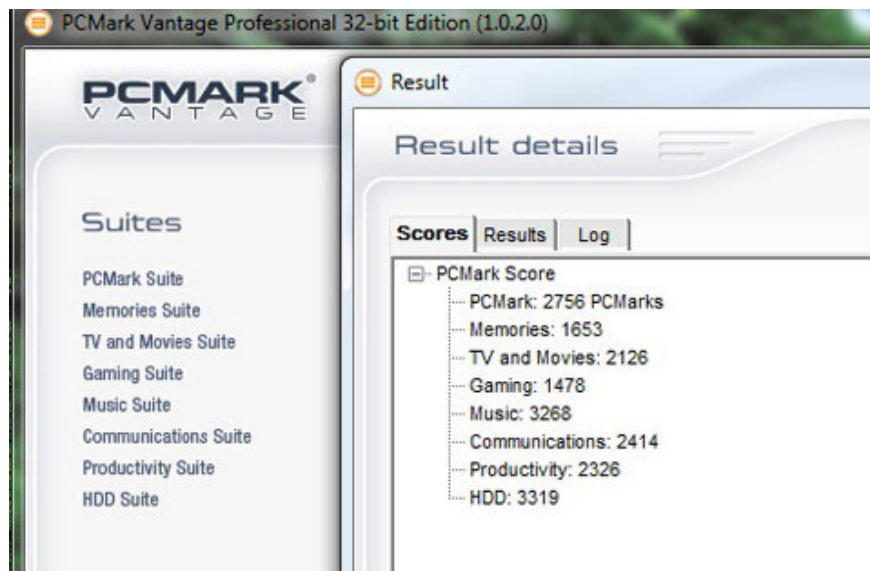
With hardware configuration like the machine achieved 3.4 points when marking with Windows Experience Index system on Windows 7 Professional operating system (32 bit) (installed with the machine). This is a low level and easy to understand because it does not use discrete graphics card but is enough to run smoothly the Aero Peak graphical interface with all the highest settings.



Machine reached 768 points with 3DMark06 program. (Screenshot) .

Using the 3DMark06 grading program to test the graphics power, Edge scored 768 points slightly below the average of 13-inch models without integrated graphics cards of 857 points (average figures per page). Laptopmag). Meanwhile, if scoring the entire system by PCMark Vantage program, Lenovo's model reached 2,756 overall points equivalent to an average of 2,764 points.

In the test play some games require average graphics such as PES2010, the machine achieved an average speed of 26 frames / second with medium setting, 1,280 x 720 pixel resolution. As for World of Warcraft at 1,024 x 768 pixel resolution, the device achieved an average speed of 29 frames per second, but when the resolution increased to the maximum that the screen supported was 1,366 x 768 pixels, Edge only " kham " is game at 5 frames per second.



Scoring with PCMark Vantage. (*Screenshot*) .

Although there is no discrete graphics card, only Intel GS45 Express graphics chip, but Edge still runs smoothly with HD and Full HD 1080p videos. Experiment tentacles at different times, the machine is fast and the time is not large.

With testing video format conversion, the results are also above average and acceptable. When converting a MP4 to AVI video file with 114 MB capacity, Edge 13 takes more than 11 minutes. If using Oxelon Media Converter to convert the format (more efficient application for multi-core CPUs) the machine achieved impressive results, it took just over a minute.

Edge radiator fan system is located on the left side, this is also the hottest part of the machine. The lower half of the left side when used for a short period of time heats up quite clearly, this certainly affects many people who often have to move and have the habit of putting the machine on the thighs to work. However, the upper part and the left half of the keyboard are quite good in heat dissipation.



Play PES2010 at 26 frames per second. (*Screenshot*) .

With 6 cell battery included, ThinkPad Edge for battery life is quite impressive. If set at the highest setting (High Performance) and running normal programs, like listening to music, surfing the web, it can be used for more than 4 hours continuously. If the medium level, the Edge can operate in about 5 hours and 30 minutes.

The ThinkPad Edge 13 is a mobile device with an impressive battery life and a compact design, although the graphics processing capability is not really strong. The models of red, glossy black stand out and are more suitable for modern and dynamic young people. Meanwhile, the black and gray model will be more "gu" than with successful entrepreneurs. Although carrying the ThinkPad brand is quite sensitive and can not step through the big shadow of this famous business laptop, but considering the overall machine and price, this is a model worth owning.

You finished reading the article "**ThinkPad Edge is not convincing**" edited by the [TipsMake](#) team. We hope this article has provided you with many useful tech tips and tricks. You can search for similar articles on tips and guides. Thank you for reading and for following us regularly.