

# Things you don't know about 26 types of Pokéballs - Including 5 generations of Pokéballs

Pokéball is the most important item in Pokémon GO, helping gamers quickly catch Pokémon for their team. The higher the level of the Pokéball, the more effective it is at catching Pokémon.

As one of the indispensable "tools" every time players participate in catching Pokémon, Pokéballs in Pokémon GO will help us capture all types of Pokémon. However, Poké balls are also divided into different levels, the higher the level, the higher the ability to catch Pokémon.

Besides, the ability of a Pokéball to catch Pokémon depends on the characteristics of each type of ball, whether the Pokémon type is easy to catch or not, or the status of the Pokémon when we throw the ball, etc. There are a total of 26 types of Pokéballs and divided into 5 different generations or levels. In this article, we will bring readers things that few people know about Pokéball.

## First generation Pokéball

Pokéball generation 1 is the simplest, low-level generation of balls and is present in Pokémon GO.

### 1. Poké Ball:

This is the first type of ball that you will own as soon as you step into the world of catching Pokémon. This type of ball has a success rate of catching Pokémon ranging from 0 to 255. The ball has typical red and white colors, and is cheap to buy. Poké Ball is usually only suitable and maximizes its power with Pokémon from level 1 to level 15.



## 2. Great Ball:

The ball is covered in white and blue, and the rate of catching Pokémon ranges from 0 to 200, 1.5 times higher than a Pokéball. For this type of ball, you should use level 15 to 30 to achieve high efficiency.



## 3. Utral Ball:

Using brown and yellow as the main colors, Ultra Ball has a catch rate ranging from 0 - 150. This type of ball is suitable for catching Pokémon from level 30 - 60.



## 4. Safari Ball:



Safari Ball is a quite special type of ball that cannot be bought with money but can only be received when you participate in catching Pokémon in the Safari wild reserve. The Safari Ball's catch rate is on par with the Great Ball.

### **5. Master Ball:**

This type of ball belongs to the "ultimate" category, only appearing a few times as a gift for worthy coaches. Master Ball's success rate is up to 100%. This means that even the most powerful Pokémon cannot escape the Masterball.



## 2nd generation Pokéball

### 1. Level Ball:

The ball has a gray streak on an orange background, made from the fruit of the Apricorn tree. This type allows gamers to more easily catch Pokémon that are lower level than the Pokémon you are using.



The levels include the following: the effect will be similar to the Poke Ball when the Pokémon being used is equal to or lower in level than the Pokémon intended to be caught. The rate will double when the Pokémon used is of a higher level, but not to the point of doubling the level. Multiply 4 if the level is double but less than 4. Multiply 8 if the level is 4 times higher.

### 2. Lure Ball:

This type of ball is quite similar to Great ball but has an additional red streak on top. This type of ball has the ability to lure, 3 times the success rate with Pokémon appearing when using a fishing rod. In other situations, Lure Ball's catching ability will be equal to Poke Ball.



### **3. Moon Ball:**

As the name suggests, right on the surface of the ball is printed a moon image, effective against Pokémon that can evolve with Moon Stone. The catch rate of this type of ball is multiplied by 4 for Pokémon such as Nidoran, Clefairy, Jigglypuff or Skitty. In other situations, this type of ball can be used like a Poke Ball.



#### **4. Friend Ball:**

The ball is covered in green with red dots, and has the same catch rate as the Poke Ball. Friend Ball has the effect of making Pokémon have a trainer friendliness stat of 200.



#### **5. Love Ball:**

This type of ball is effective against wild Pokémon of the same type that the Pokémon is using. The catch rate will be multiplied by 8 times, and other situations will be similar to Poke Ball.



## **6. Heavy Ball:**

The glossy type has a gray-green color and blue dots on the surface. This type of ball is used to handle Pokémon with large weights. The success rate of catching the ball will be subtracted from 20 if the Pokémon weighs less than 451.5 lbs, plus 20 if it is between 451.5 - 677.3 lbs. Plus 30 ranges from 677.3 - 903 lbs. Add 40 if the Pokémon weighs more than 903 lbs.



### **7. Fast Ball:**

The success rate of this type of ball will be multiplied by 4 if you catch Magnemite, Grimer or Tangela. In addition, the ball is also effective against Pokémon with a speed index of at least 100. In other cases, it can be used as a Poke Ball.



### **8. Sport Ball:**

This type of ball has the same catch rate as Great Ball and is given out for free when gamers participate in Pokémon catching competitions at the park.



## **3rd generation Pokéball**

### **1. Premier Ball:**

This type of ball will only appear at events in the Pokemon world. Therefore, it will be very difficult for us to find and only increase by 1 if the player buys 10 Poke Balls in the shop. Premier Ball's catch rate is on par with Poke Ball.



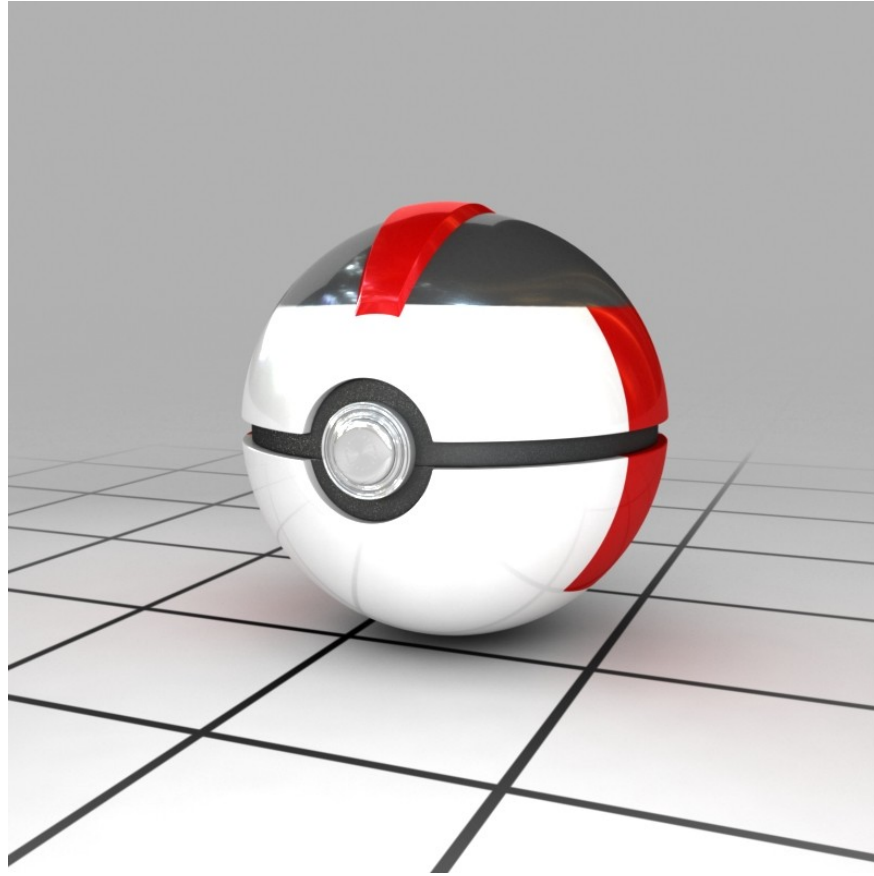
## **2. Repeat Ball:**

This type of ball will only exert its power on Pokemon already in the Pokedex. The success rate will be multiplied by 3, but in other cases it is equivalent to a Poke ball.



## **3. Timer Ball:**

The success rate of Timer Ball catching Pokemon is multiplied by 4.



#### **4. Nest Ball:**

This type of ball will be effective against Pokemon that are lower level than the first Pokemon in your team.



### **5. Net Ball:**

This type of ball will handle Water-type and Bug-type Pokemon. Each ball has a success rate of 3, 3 times higher than a normal Poke Ball.



## **6. Dive Ball:**

Dive Ball is used to catch Pokemon near lakes, beaches, swimming pools, etc. This type of ball is 3.5 times more effective than Poke Ball.



## **7. Luxury Ball:**

In addition to the successful capture rate equal to Poké Ball, Luxury Ball has an additional effect of increasing the friendliness index of the caught Pokémon. This type of ball is also quite sophisticated in terms of design, so it is called Luxury.



## **4th generation Pokéball**

### **1. Heal Ball:**

Although the catching ability of this type of ball is equivalent to a Poke Ball, it has the ability to restore health and attack stats for the caught Pokemon.



## **2. Quick Ball:**

The usefulness of Quick Ball will be maximized when the player throws this ball in the first turn in the battle with a wild pokemon. If used properly, the catch rate of this type of ball is very high, 5 times higher than that of a Poke Ball.



### **3. Dusk Ball:**

3.5 times the successful capture rate when we use to catch Pokemon in caves and at night.



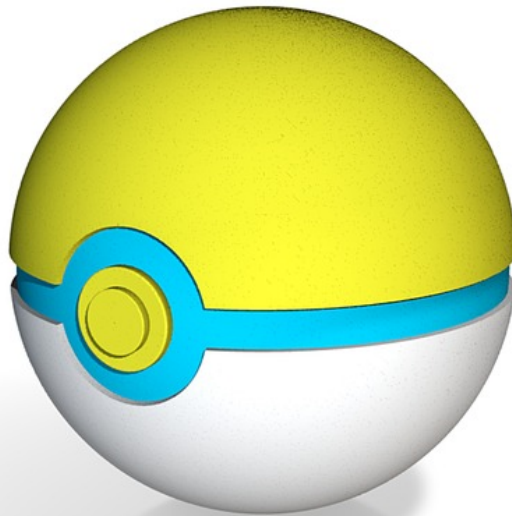
#### **4. Cherish Ball:**

This is the strangest type of ball because it contains event pokemon, usually rare pokemon, given to gamers in some special events. Normally, Cherish Ball has the same effect as Poke Ball.



### **5. Park Ball:**

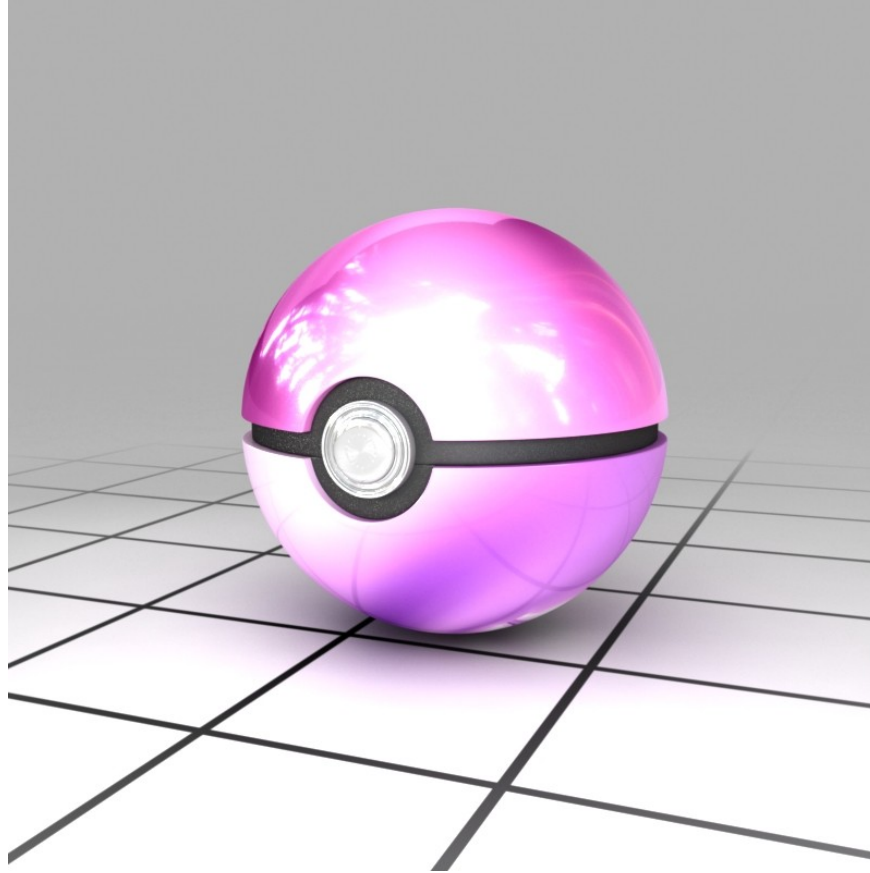
Re-capture Pokemon sent through Pal Park with a catch rate of 255x. This is also a special type of ball that cannot be bought or sold.



## 5th generation Pokéball

### Dream Ball:

This is the most magical type of ball in the Pokemon world. It allows players to catch any pokemon that appears in the Entree forest. This is a special area that players will encounter while in the Dream World. The way to catch pokemon in the forest is also very strange.



**Wish you have fun playing the game!**

You finished reading the article "**Things you don't know about 26 types of Pokéballs - Including 5 generations of Pokéballs**" edited by the [TipsMake](#) team. We hope this article has provided you with many useful tech tips and tricks. You can search for similar articles on tips and guides. Thank you for reading and for following us regularly.