

Things to note when using UEFI instead of BIOS

New Windows 8 computers do not use the traditional BIOS, but instead are UEFI firmware like the Macs that had been years ago. How you can perform common system tasks has changed.

New Windows 8 computers do not use the traditional BIOS, but instead are UEFI firmware like the Macs that had been years ago. How you can perform common system tasks has changed.

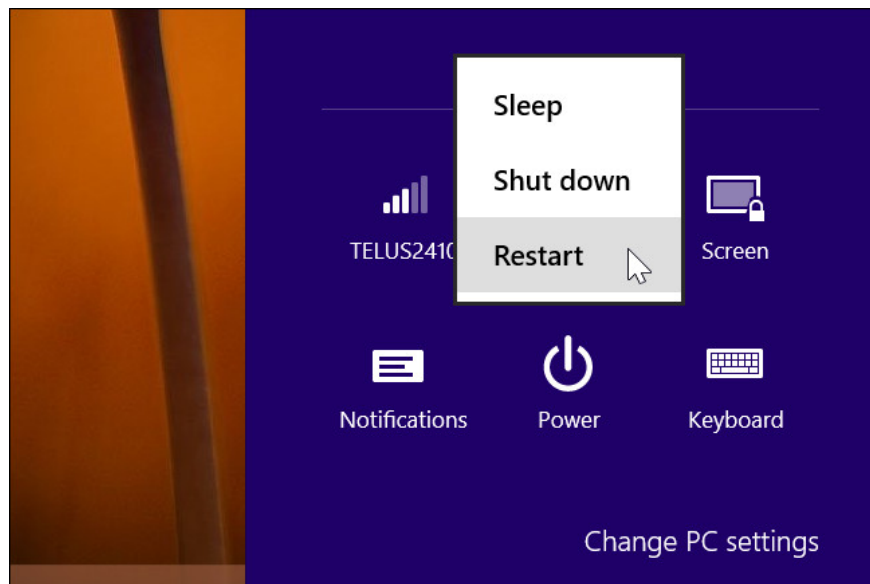
If you are interested in why the BIOS is replaced by UEFI, see the UEFI overview and compare the difference between UEFI and the traditional BIOS.

Access options right in Windows

With modern computers instead of waiting a few seconds to press the key and slowing down the boot process, you can access the boot menu after booting into Windows.

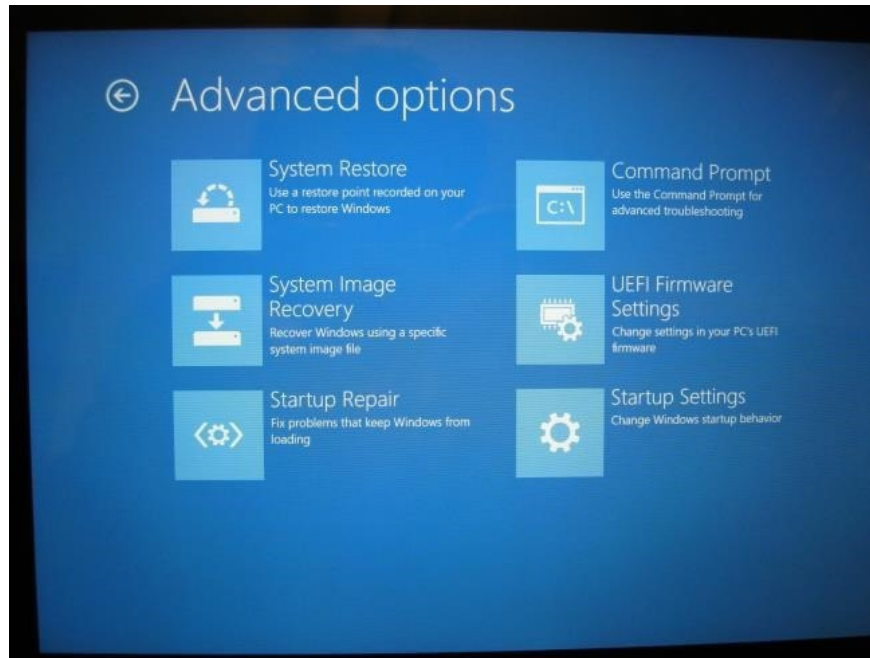
To access this menu, open the Settings bar - or drag from the right and click Settings or press the Windows + I. key Select the Power button below the Settings bar, press and hold the Shift key, and click Restart. Your computer will reboot in the boot menu.

Note: if you are using Windows 10, you can go to the Power option from the Start menu. Just hold down the SHIFT key and click Restart.



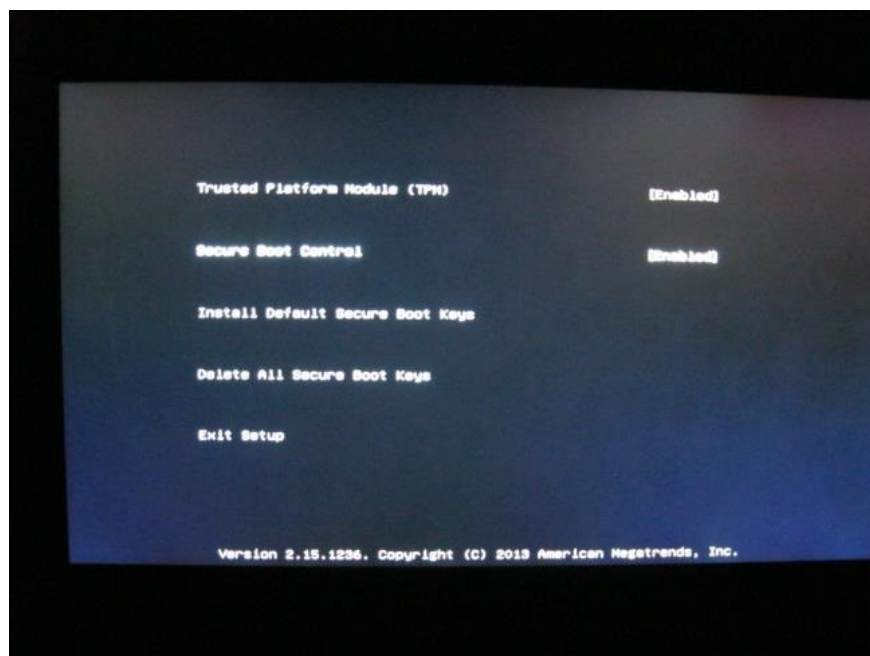
Access UEFI settings at a low level

To access UEFI settings, click the **Troubleshoot** box, select **Advanced Options** , and click **UEFI Firmware Settings** .



Then, click **Restart** option and your computer will reboot in UEFI firmware installation screen.

You will find different options on different computers. For example, Microsoft's Surface Pro computer has only a few options, but on traditional desktops there may be more options.

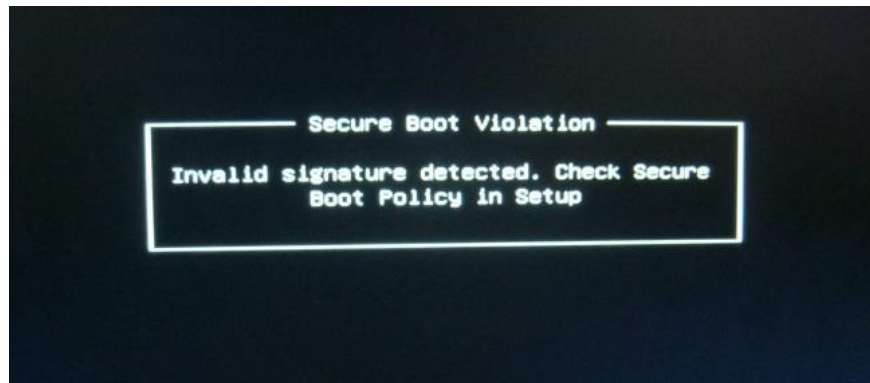


UEFI is used for new computers, you will not see UEFI Firmware Settings if the old computer installs Windows 8 or 10 using the BIOS system instead of UEFI - you will have to access the BIOS the same way you usually do.

Note that this boot menu may not be available on all PCs with UEFI. On some UEFI computers, you may have to access the UEFI installation screen in a different way - review the computer documentation if you don't see the installation button here.

The UEFI installation screen allows you to disable Secure Boot, a useful security feature that prevents malware from attacking Windows or other installed operating systems. However, it also prevents other operating systems - including Linux distributions and old Windows versions such as Windows 7 - that do not boot and install.

You can turn off Secure Boot from the UEFI installation screen on any Windows 8 or 10 computer. You may have to ignore Secure Boot's security advantages, but in return you can boot any operating system you want .



Boot from external storage device

To boot the computer from USB on Linux, you need to access the boot menu. Select Boot Device and select the device you want to boot. Depending on your computer hardware, you will see many options such as USB drive, CD / DVD drive, SD card, network boot, etc.



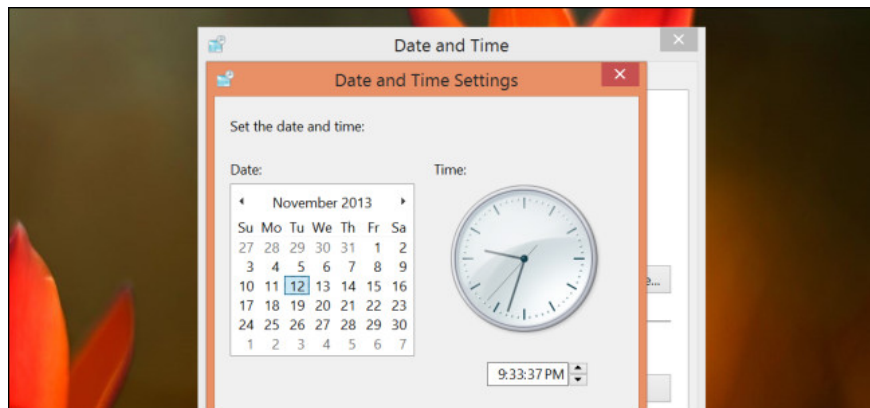
BIOS mode

Many computers with UEFI firmware will allow you to enable BIOS compatibility mode. In this mode, UEFI firmware functions as a standard BIOS. This improves compatibility with older operating systems not designed with UEFI - such as Windows 7.

If the computer has this option, find it in the UEFI installation screen and enable this feature if needed.

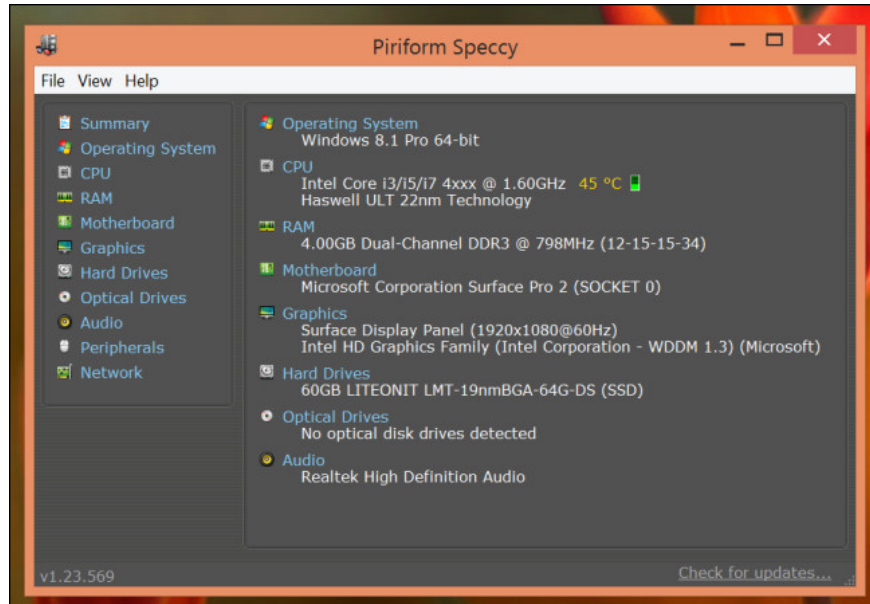
Change system time

In general, the BIOS is integrated with a clock that shows the time and allows the user to change it from the BIOS setup screen. The computer with UEFI is also available with a clock that works the same way, but does not provide options in the UEFI installation screen to change the time. This is not really important because of changing the time on the operating system, the time on the system also changes.



Access hardware information

On the UEFI settings screen, internal hardware information and computer temperature can be displayed or not. If not displayed, you can still view this information with applications that view third-party system information, such as Speccy.



Change hardware settings

The BIOS usually provides a variety of settings for system hardware changes - overclocking the CPU by changing the multiplier and voltage settings, adjusting RAM timings, configuring video memory, and modifying Other hardware related settings. These options may or may not be in the hardware UEFI firmware. For example, on a tablet, a convertible computer (the computer can remove the screen for use as a tablet) and a laptop, you can't find any such settings. On the desktop motherboard designed for the controller, you can find these settings in the UEFI installation screen.

Although UEFI access methods and booting from UEFI external storage devices and BIOS are different, there are not many changes. Just like the BIOS that comes with laptops usually has fewer options than motherboard BIOS, UEFI firmware settings on tablets and convertible computers offer less options than on computers. Desktop with UEFI support.

You finished reading the article "**Things to note when using UEFI instead of BIOS**" edited by the [TipsMake](#) team. We hope this article has provided you with many useful tech tips and tricks. You can search for similar articles on tips and guides. Thank you for reading and for following us regularly.