

# These are the types of printer cables needed to connect to the computer

If the printer does not turn on Wi-Fi, you need to connect them using a cable. Maybe your printer is second-hand and it doesn't have a cable or you may have lost it and don't know which cable your printer needs. So this article will introduce you to the most common cables used to connect printers to computers. Please choose the most suitable printer connection cable.

If the printer does not turn on Wi-Fi, you need to connect them using a cable. Maybe your printer is second-hand and it doesn't have a cable or you may have lost it and don't know which cable your printer needs. So this article will introduce you to the most common cables used to connect printers to computers. Please choose the most suitable printer connection cable.

1. How to share printer in Windows network system?

## These cables connect printers to common computers

1. Cable connects an A-to-B USB printer
2. AmazonBasics is 6 feet long USB A-to-B cable
3. AmazonBasics's 16-foot USB A-to-B cable
4. Cable Matters USB C-to-B cable is 6.6 feet long
5. USB-C adapter to USB-A of AUKEY
6. Parallel cable
7. C2G USB-A to DB25 cable
8. C2G USB-A to DB25 cable
9. UGREEN male cable USB-A to CN36
10. Ethernet cable

## Cable connects an A-to-B USB printer

The most popular printer in the last decade is a USB printer. It uses a USB port on the computer and on the printer to connect, however, both USB ports are not the same.



### USB-A connector

A USB-A cable connector to the computer is a standard rectangular connector that most computers have. The other USB-B head is connected to a square-shaped printer with rounded edges at the bottom.



## USB-B connector

To connect a USB printer to a computer, you need an A-to-B USB cable. You don't need to worry if your computer has only USB 3.0 ports, this cable is designed for backward compatibility with USB 2.0 ports. If the computer has only USB-C ports, you can use the adapters to convert.

1. How to connect printer 2.0 USB port to USB 3.0 port on Windows 10



USB-C connector on the right

## **AmazonBasics is 6 feet long USB A-to-B cable**

AmazonBasics produces a 6-foot long A-to-B USB cable for about \$ 5. It received 5 star reviews with over 900 reviews.

## **AmazonBasics's 16-foot USB A-to-B cable**

AmazonBasics also produces 16-feet long A-to-B USB cables for those who need to connect computers and printers over long distances. The cable also received a 5-star rating on Amazon with over 2,200 reviews and for about \$ 6.

## **Cable Matters USB C-to-B cable is 6.6 feet long**

If the computer has only one USB-C port, use the C-to-B USB cable of Cable Matters. Cable Matters produces 6.6-foot USB cables in black and white. This cable costs about 15 dollars.

## **USB-C adapter to USB-A of AUKEY**



If there is an A-to-B USB cable but the computer only has USB-C port, it is best to use the USB-C to USB-A adapter of AUKEY. First, you need to plug the printer cable into the adapter, then plug the adapter into the USB-C port on the computer. The price of this adapter is about \$ 15.

## Parallel cable



Male connector DB25

Before USB printers became popular, the previous generation printers were designed with parallel ports on the back. It usually has 25 or 36 feet, making them quite wide and bulky. If you still own a printer manufactured in the late 1990s back to the 1970s, you must use parallel cables to connect the computer.



Male connector CN36 on the right hand side

Good if your computer still has a parallel port, but it may not be available. In this case, you can get a cable running parallel from the printer to the USB on the computer. First, determine if the printer is using parallel port DB25 or CN36 by counting the number of pins. Next determine if the printer has a male or female port. The DB25 male ports can see the pins, while the CN36 male ports have a central bar that matches the female socket.

## **C2G USB-A to DB25 cable**

C2G has a USB-A to DB25 cable currently rated 4 stars on Amazon with over 670 reviews. This cable is for printers with DB25 male ports. The price of this cable is about \$ 10 for a 6-foot cable.

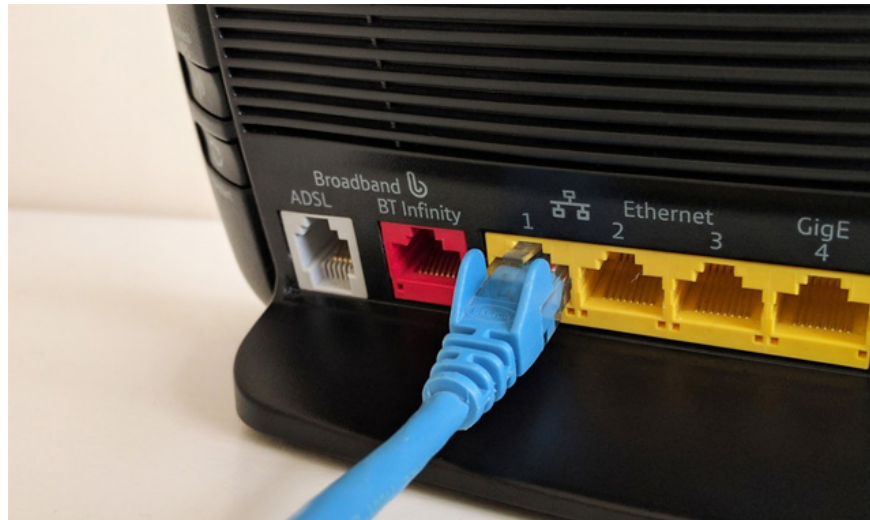
## **C2G USB-A to DB25 cable**

If the printer has a DB25 port, you should want to get the USB-A to DB25 cable from C2G for \$ 15 for a 6-foot cable.

## **UGREEN male cable USB-A to CN36**

If your printer has a CN36 port, try UGREEN's USB-A to CN36 cable for about \$ 11 for a 6-foot cable. A cable end is a male USB-A connector and the other end is a CN36 male connector.

## **Ethernet cable**



Although the printer cannot activate Wi-Fi, you can still connect it to the router and network using an Ethernet cable if the printer has an Ethernet port. This allows devices to turn on Wi-Fi to print wirelessly.

Mediabridge creates a number of outstanding Ethernet cables, their 10-foot, 25-foot and 50-foot options all have a 5-star rating on Amazon with hundreds of reviews and all for under \$ 10.

See more:

1. How to fix Windows errors not connected to the printer
2. Why the printer cannot print and how to fix it
3. Instructions on how to check and install the IP address for the printer

You finished reading the article "**These are the types of printer cables needed to connect to the computer**" edited by the [TipsMake](#) team. We hope this article has provided you with many useful tech tips and tricks. You can search for similar articles on tips and guides. Thank you for reading and for following us regularly.