

The way to fix Windows 8 error does not catch WiFi

The reason why the computer cannot catch WiFi signal may be because after upgrading to a new version or because the network driver is incorrect.

When the computer happens to not receive a connection to WiFi, you will first proceed to check the connection port, or restart the computer to fix the error. However, it is not always possible to easily handle the situation that the computer does not catch the WiFi signal the above way.

The situation that a laptop doesn't catch WiFi may be because after upgrading to a new operating system with an error, or setting up a lack of network drivers, the old driver also leads to this situation. In the article below, we will guide you how to fix Windows 8 error not catch WiFi.

1. Fix Wifi error disconnected on Windows 10, 8, 7 and Vista
2. Instructions for fixing Wifi errors with yellow exclamation
3. Android error Wifi connection is flickering, this is how to fix the error

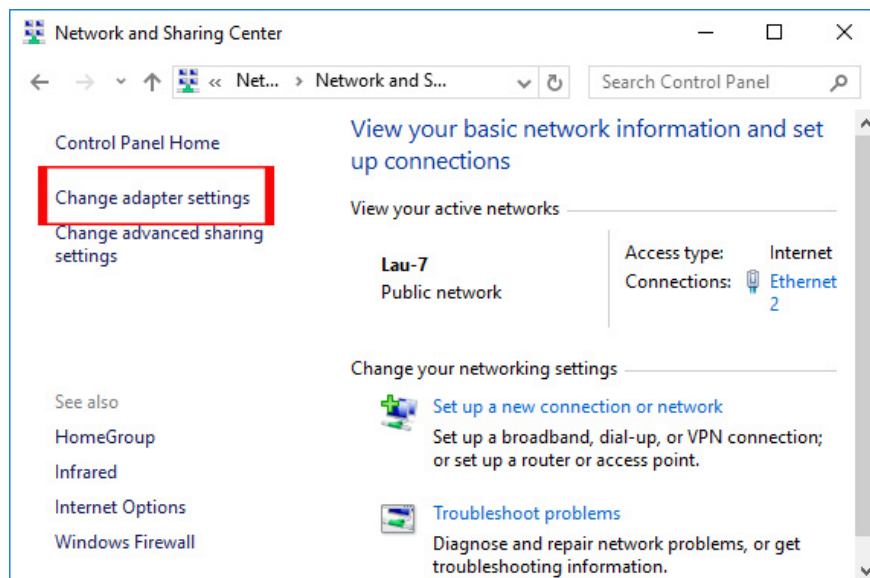
1. Windows 8 computer does not catch WiFi:

Method 1: Set up network IP address

It is possible that the network IP address on the computer has not been set, leading to a computer not receiving a WiFi signal.

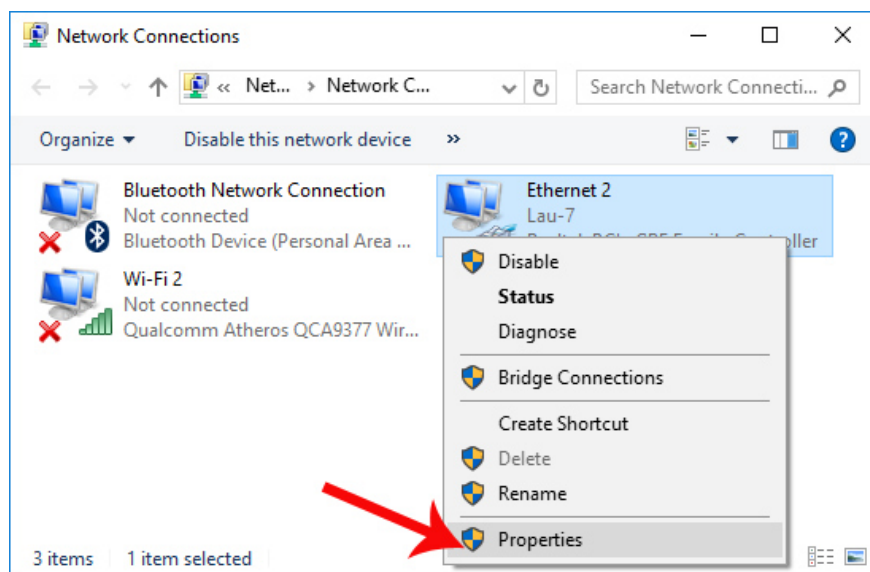
Step 1:

First, go to the **Control Panel > Network and Sharing Center > Change Adapter Settings link** .



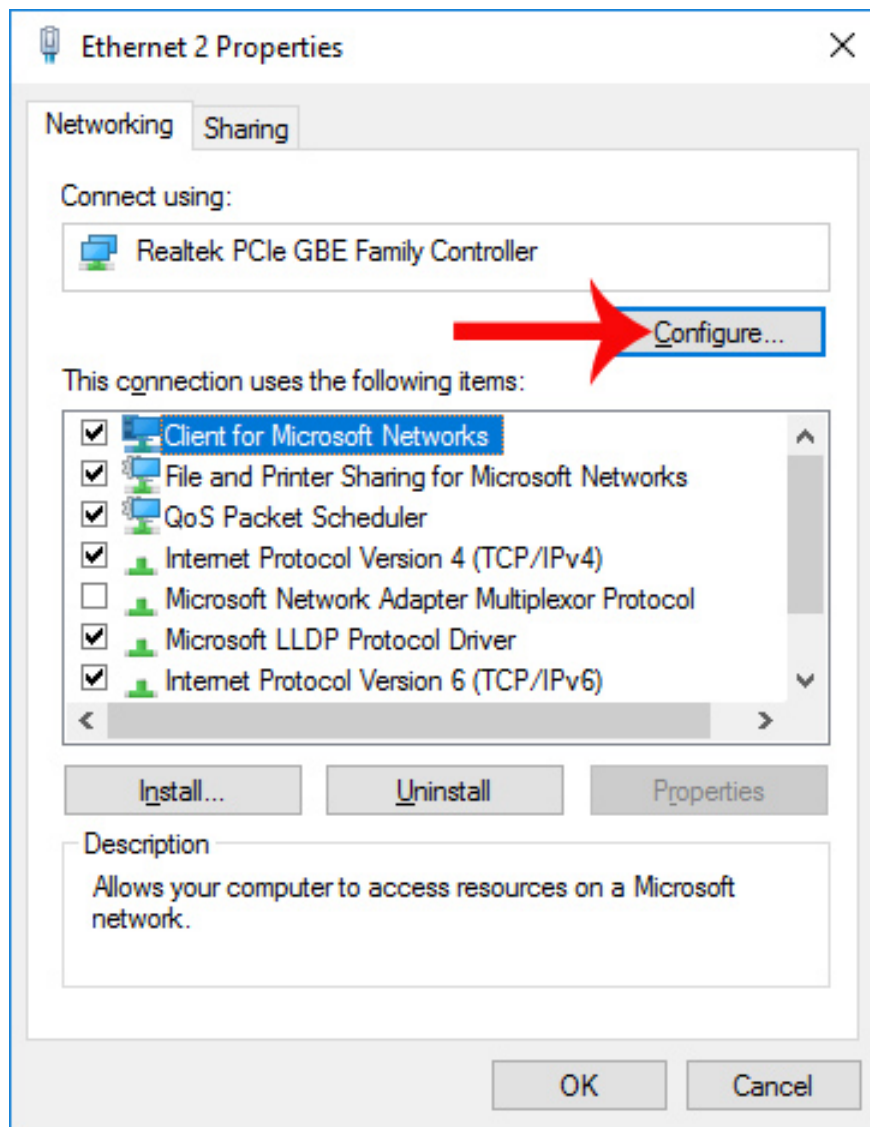
Step 2:

Next, in this interface, right-click on Local Area Connection or Ethernet and select **Properties** .



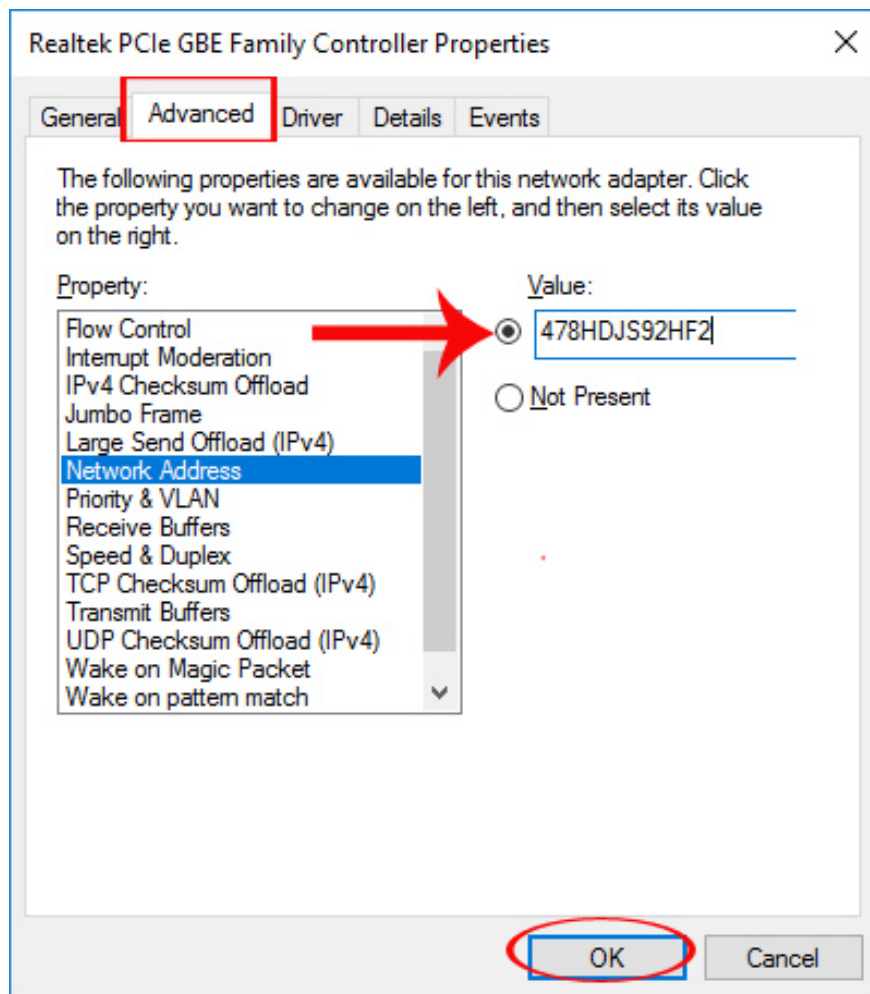
Step 3:

A new dialog box appears, click the **Configure** button.



Step 4:

Switch to the new dialog interface, users click on the **Advanced tab** . Look down at the content under the Property section to find the **Network Address** then **tick the Value** . We will **enter the Value value** as shown below. Finally click **OK** to save.

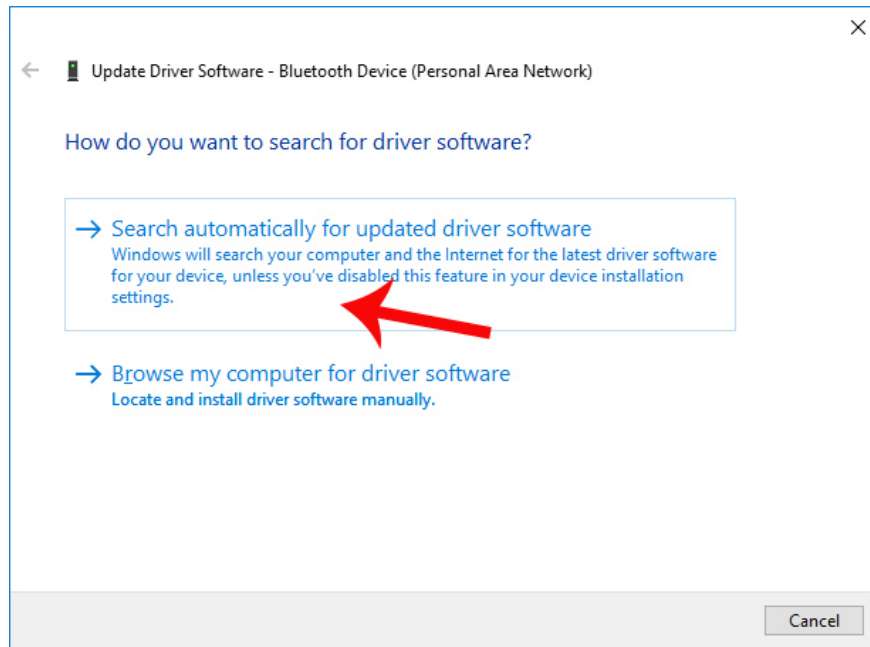


Method 2: Install the network driver for the computer

When our computer lacks network drivers, it will lead to the inability to catch WiFi. So you need to download and install the network driver for your computer.

We can install the network driver by letting the computer automatically update or use the driver installation software. Read the reference in the article below.

1. 5 basic ways to update, update drivers for computers
2. How to automatically update drivers on Windows using SnailDriver
3. Instructions for installing drivers for Windows with DriverPack Solution



2. Report Limited WiFi error on Windows 8:

This is also one of the situations that often occurs when connecting to WiFi, causing discomfort to users.

Method 1: Configure TCP / IP from Netsh.exe command line

1. Configure TCP / IP from the command line

Step 1:

First of all, we will press **Windows + X** key combination and select **Command Prompt (Admin)** .

Programs and Features

Mobility Center

Power Options

Event Viewer

System

Device Manager

Network Connections

Disk Management

Computer Management

Command Prompt

Command Prompt (Admin)

Task Manager

Control Panel

File Explorer

Search

Run

Shut down or sign out

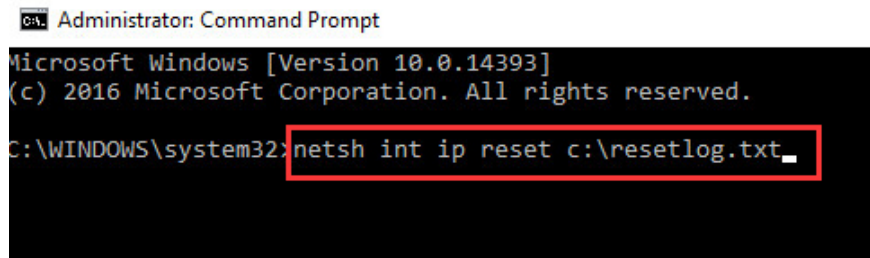


Desktop



Step 2:

Next you'll enter the **netsh int ip reset C: resetlog.txt** command in the Command Prompt interface and then restart the computer.



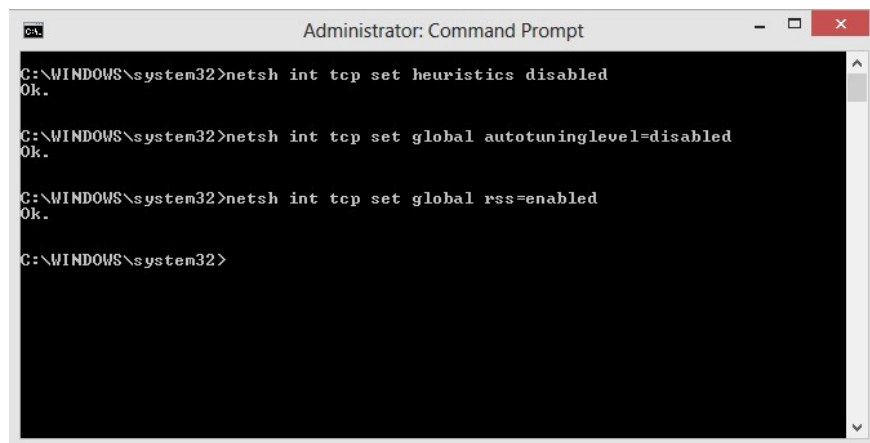
```
Administrator: Command Prompt
Microsoft Windows [Version 10.0.14393]
(c) 2016 Microsoft Corporation. All rights reserved.
C:\WINDOWS\system32>netsh int ip reset c:\resetlog.txt
```

Method 2: Restart TCP / IP protocol

Also at the Command Prompt interface, users will enter the following commands in turn:

1. netsh int tcp set heuristics disabled
2. netsh int tcp set global
3. disabled autotuninglevel = disabled
4. netsh int tcp set global rss = enabled

Finally, restart your computer.



```
Administrator: Command Prompt
C:\WINDOWS\system32>netsh int tcp set heuristics disabled
Ok.
C:\WINDOWS\system32>netsh int tcp set global autotuninglevel=disabled
Ok.
C:\WINDOWS\system32>netsh int tcp set global rss=enabled
Ok.
C:\WINDOWS\system32>
```

These are some ways to fix errors that do not catch WiFi or limited errors when capturing WiFi on a Windows 8 computer. Hopefully the WiFi error status on Windows 8 will be fixed when we apply the above methods.

I wish you all success!

You finished reading the article "**The way to fix Windows 8 error does not catch WiFi**" edited by the [TipsMake](#) team. We hope this article has provided you with many useful tech tips and tricks. You can search for similar articles on tips and guides. Thank you for reading and for following us regularly.