

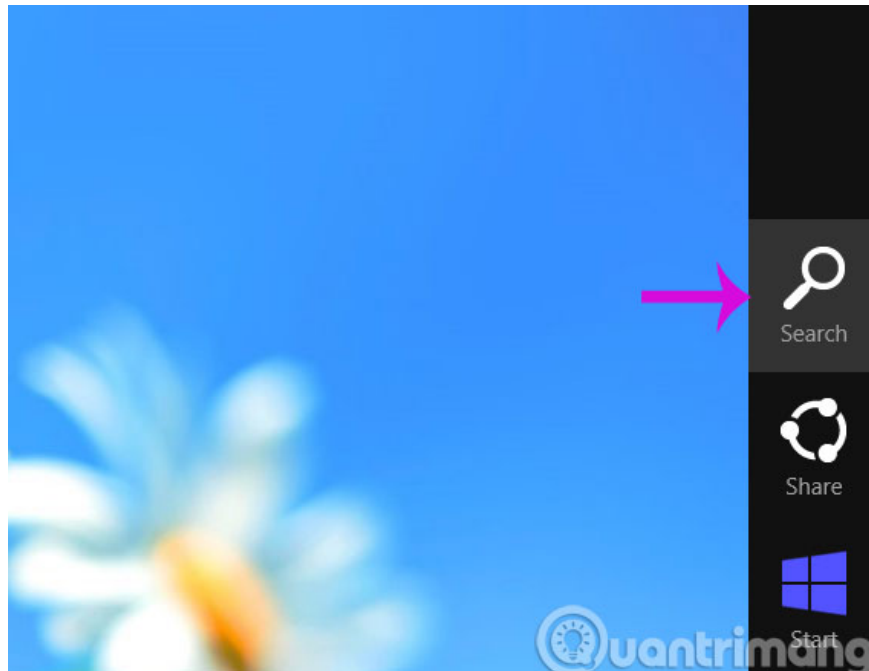
# The trick for Windows 8 to boot straight into the desktop

Besides cutting off Start menu, when starting, Windows 8 will display the metro screen instead of showing the desktop screen as the previous versions also cause many annoyances to users. Therefore, we will guide you how to catch Windows 8 straight to the desktop every time you start.

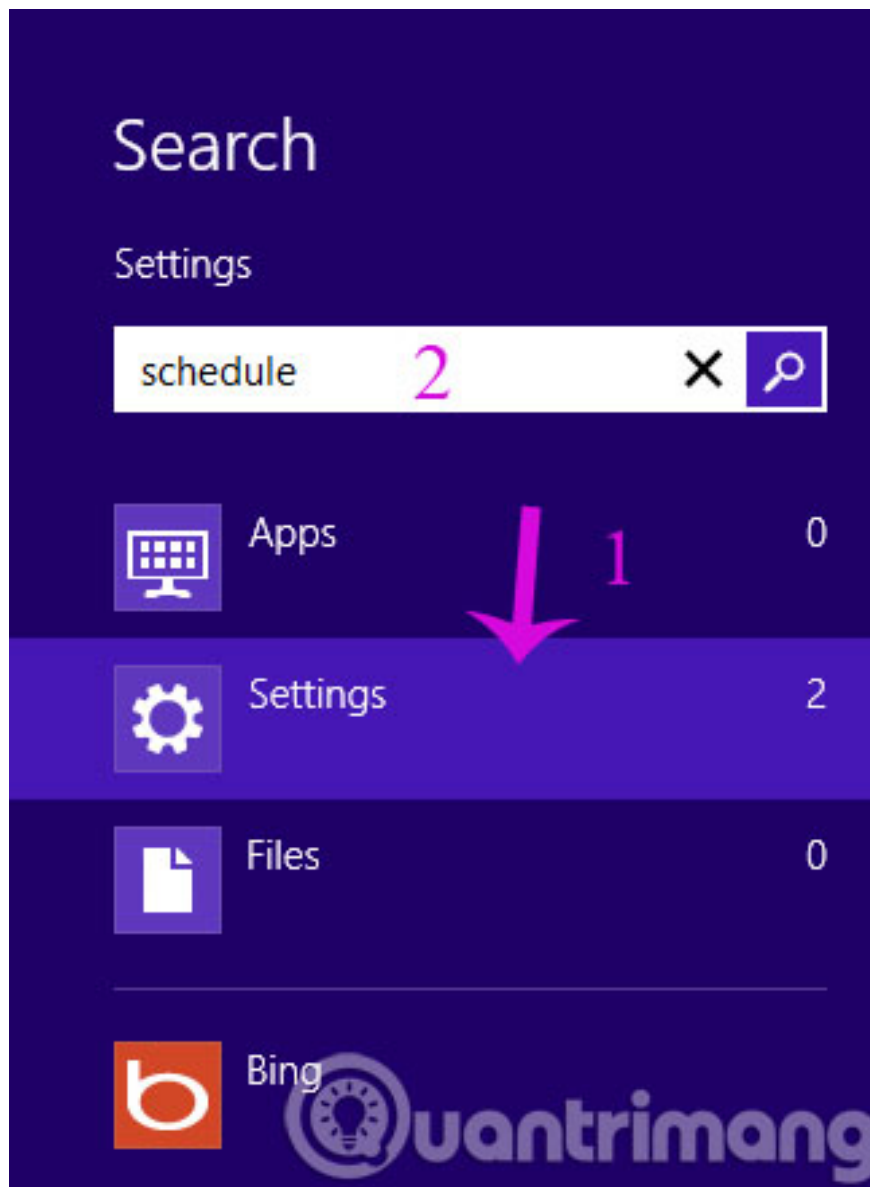
Besides "cutting off" the Start menu, when starting, Windows 8 will display the metro screen instead of the desktop screen as previous versions also cause many "discomfort" to the user. Therefore, we will guide you how to "catch" **Windows 8** running straight to the desktop every time you start.

## Way 1

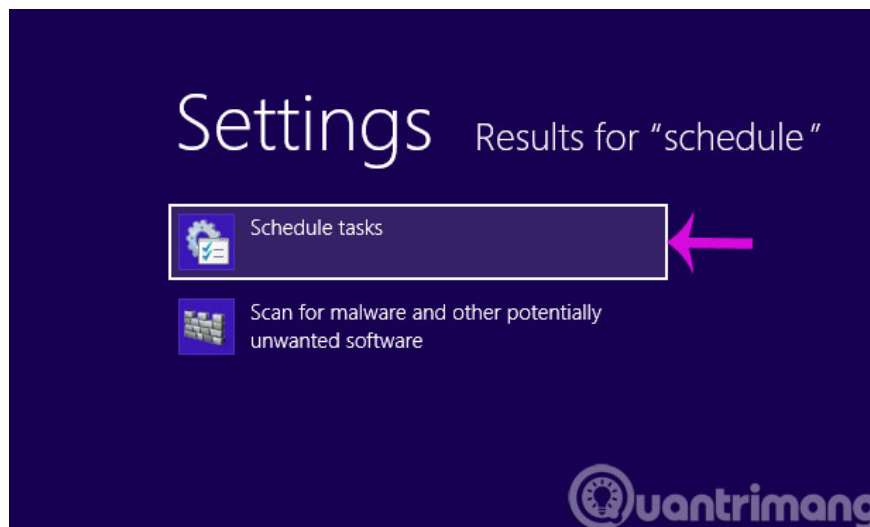
**Step 1** : Hover over the top right corner and select **Search**



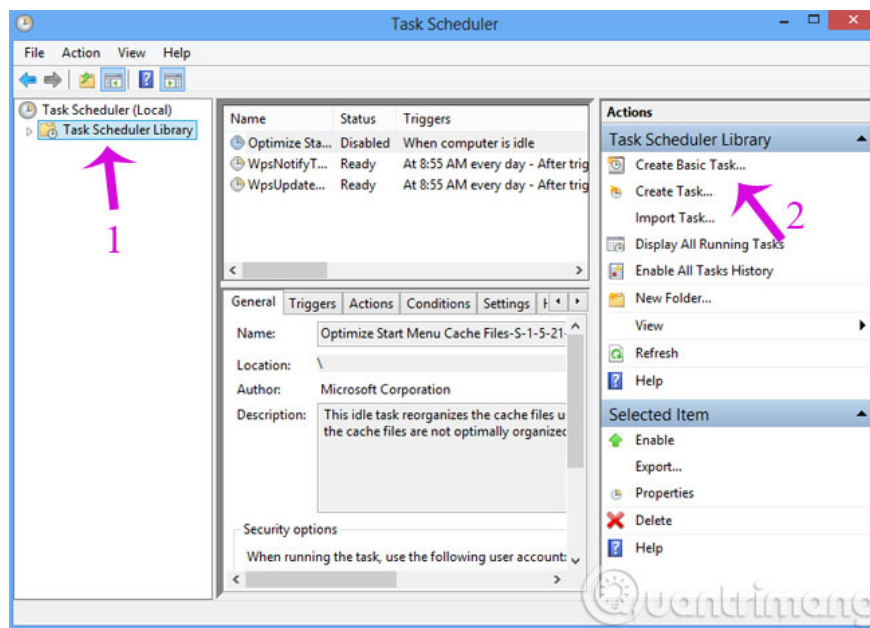
**Step 2** : In the **Search** window, click **Settings** and enter **Schedule**



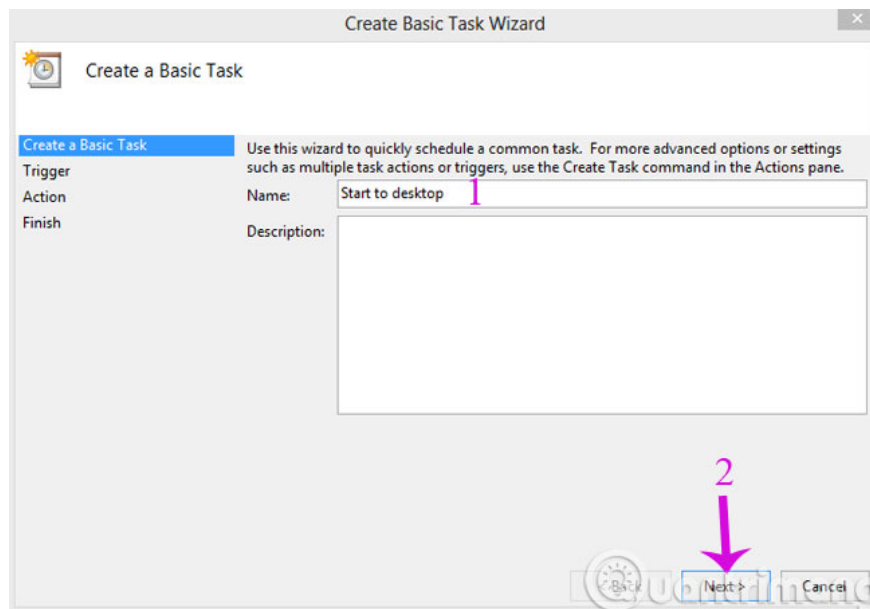
**Step 3** : In the left pane of the screen, select **Schedule Tasks**



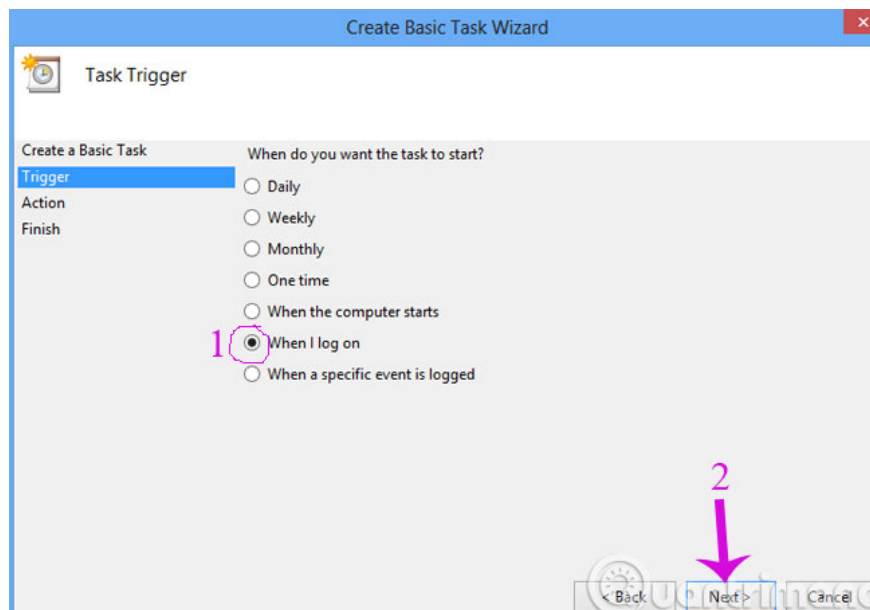
**Step 4 :** At the **Task Scheduler** task management window, select **Task Scheduler Library** in the left column, then select **Create Basic Task** in the right column.



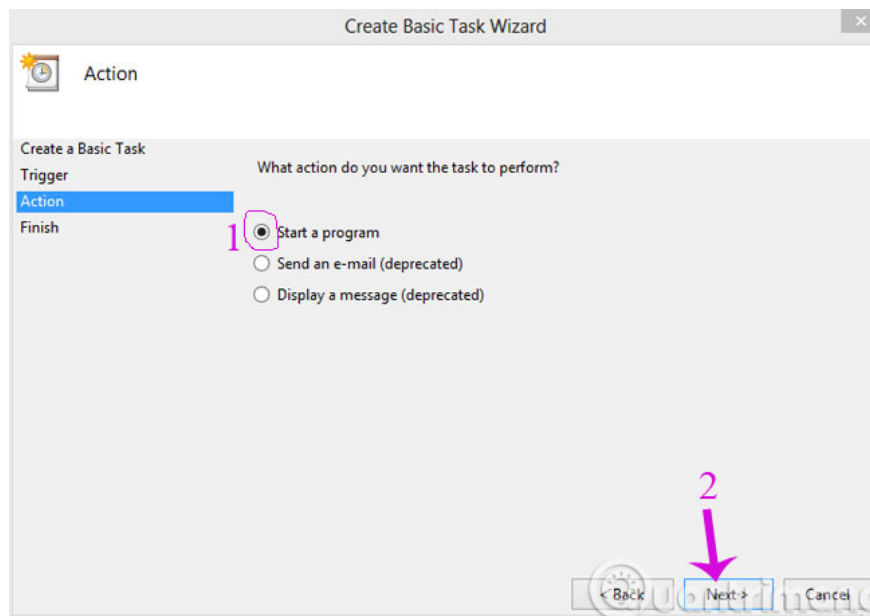
**Step 5 :** In the **Create Basic Task Wizard** dialog box, you will proceed to declare the name for the new task, the example here is **Start to Desktop > Next**.



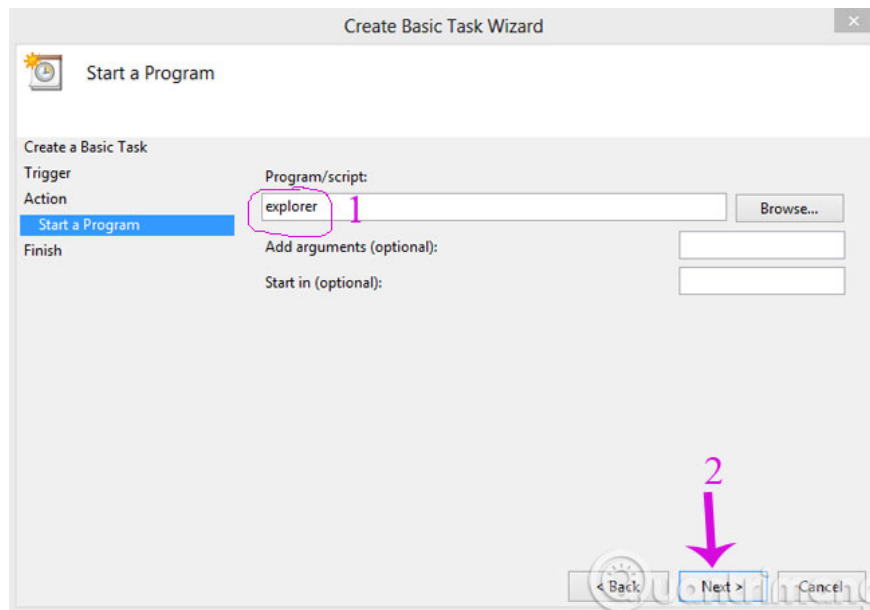
**Step 6 :** In the **Trigger** section, select **When I log on** > **Next**



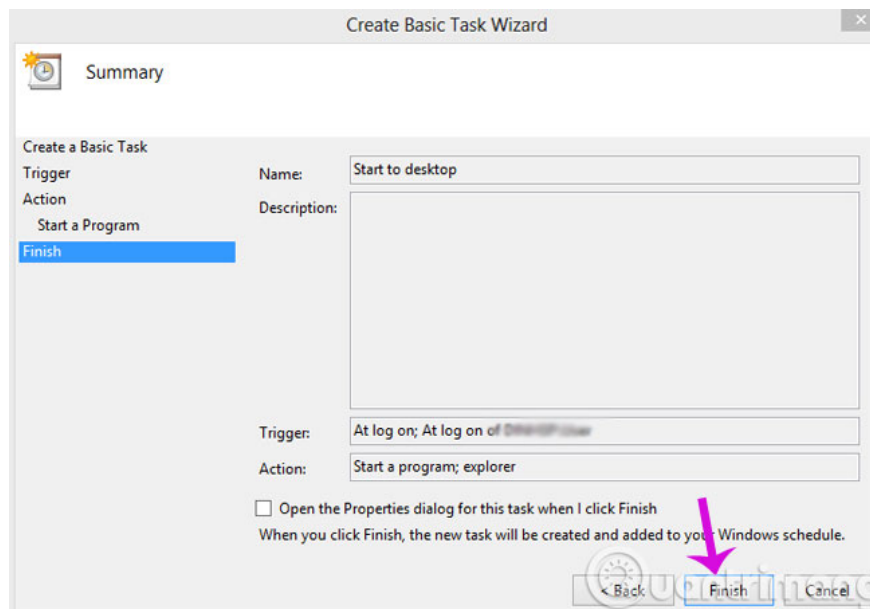
**Step 7 :** **Action** item select **Start a program** > **Next**



**Step 8 :** Enter **explorer** in **Program / Script** > **Next** box



**Step 9 :** Click **Finish** to complete the process.



Then proceed to reboot the machine and see the results.

## Method 2

**Step 1** : Open the Notepad editor and copy the following code

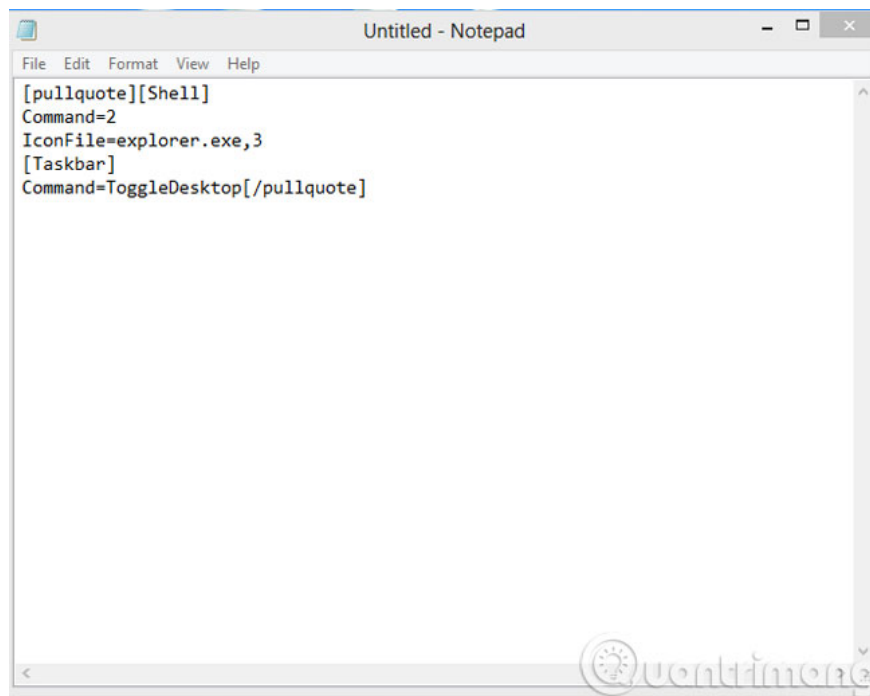
**[pullquote] [Shell]**

**Command = 2**

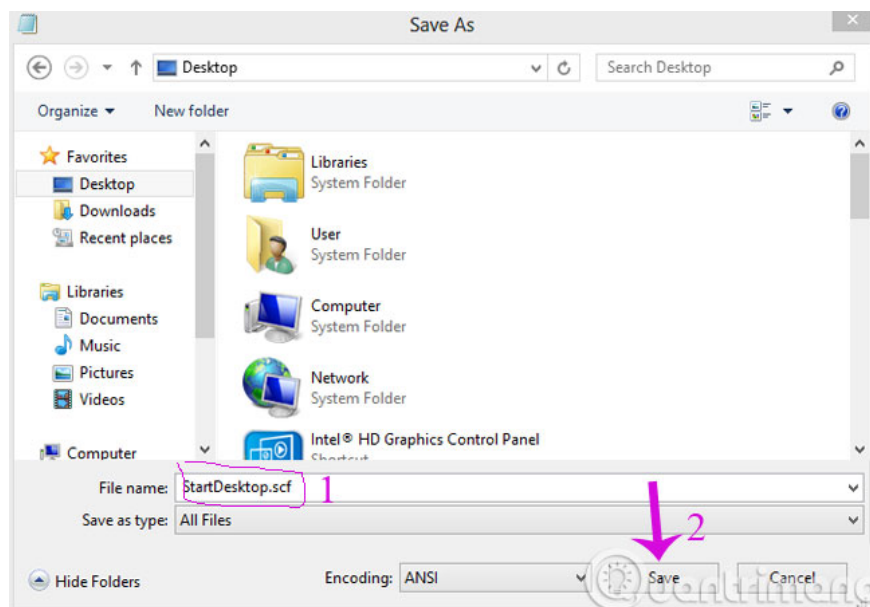
**IconFile = explorer.exe, 3**

**[Taskbar]**

**Command = ToggleDesktop [/ pullquote]**



**Step 2 :** Save the file as a **.SCF** format. This step is quite important because if you don't do it correctly, you will save it as a **.TXT** file that doesn't work.



**Step 3 :** Copy the newly created SCF file to the following directory: *C: Users AppData RoamingMicrosoft Windows StartMenuProgramsStartup* , which is the name of the user in use.

Then restart the computer and see the results.

1. How to change the login screen on Windows 8?
2. Fix Windows 8 error when encountering a black screen
3. Use wireless network in Windows 8

**Good luck!**

You finished reading the article "**The trick for Windows 8 to boot straight into the desktop**" edited by the [TipsMake](#) team. We hope this article has provided you with many useful tech tips and tricks. You can search for similar articles on tips and guides. Thank you for reading and for following us regularly.

---