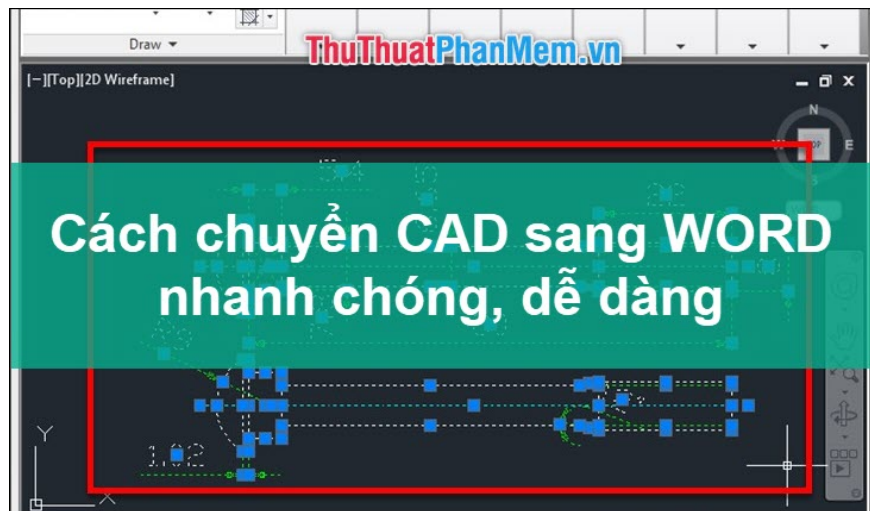


# The software converts CAD to Word the fastest and most standard

You want to transfer files from CAD to Word but do not know how and do not know which software to use? In this article, TipsMake.com would like to give you detailed instructions for how to transfer files from CAD to Word quickly and accurately. Let's see which way it is!

You want to transfer files from CAD to Word but do not know how and do not know which software to use? In this article, *TipsMake.com* would like to give you detailed instructions for how to transfer files from CAD to Word quickly and accurately. Let's see which way it is!

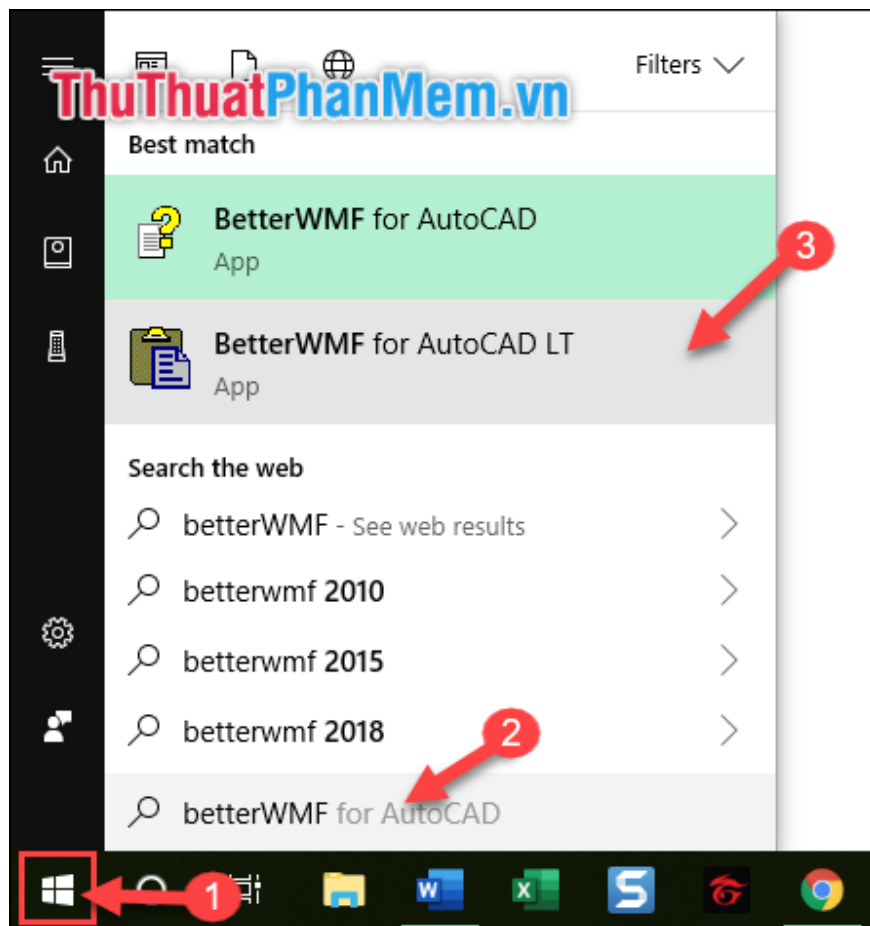


To convert files from CAD to Word, we will use **BetterWMF** software - a software that quickly copies drawings from CAD to Word, preserving the image quality and font of the file.

**Step 1** : First, you access the following address to download the software to <https://www.furix.com/download>

**Step 2** : Next, click **Next** to perform some basic installation operations.

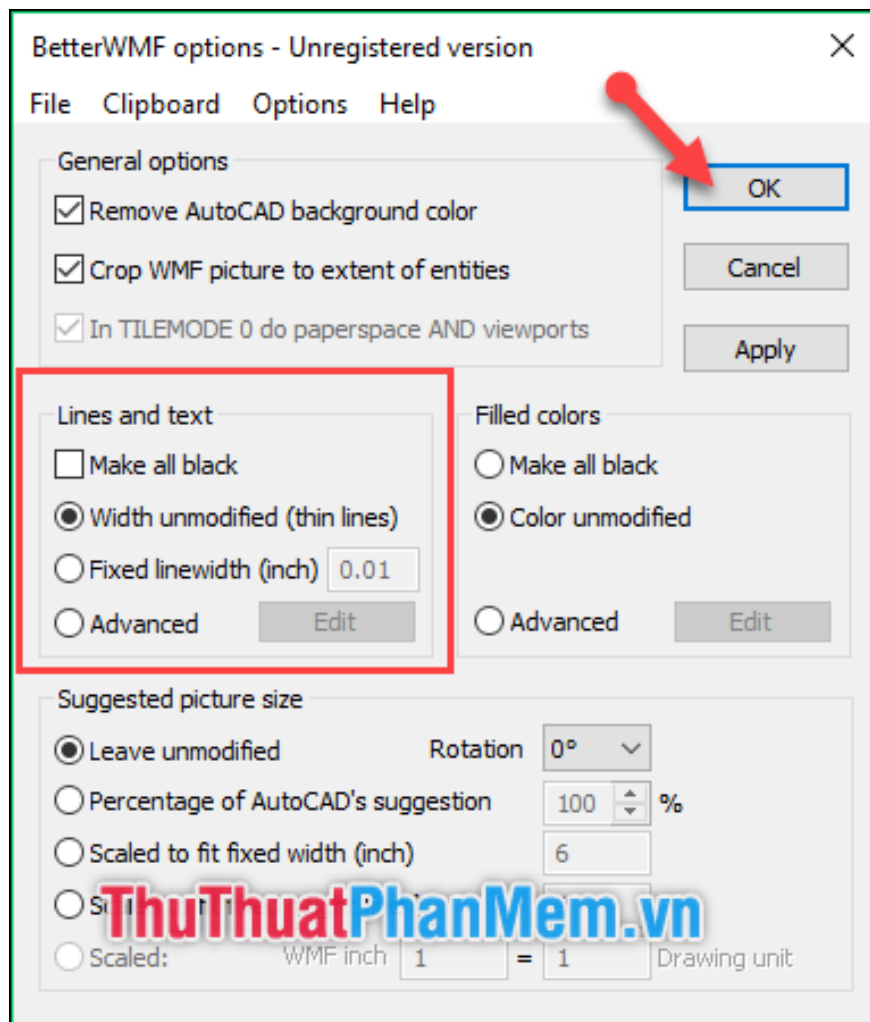
**Step 3** : After the installation is complete, open the software by: going to **Start Menu** -> type search **betterWMF** -> click **BetterWMF for AutoCAD** software .



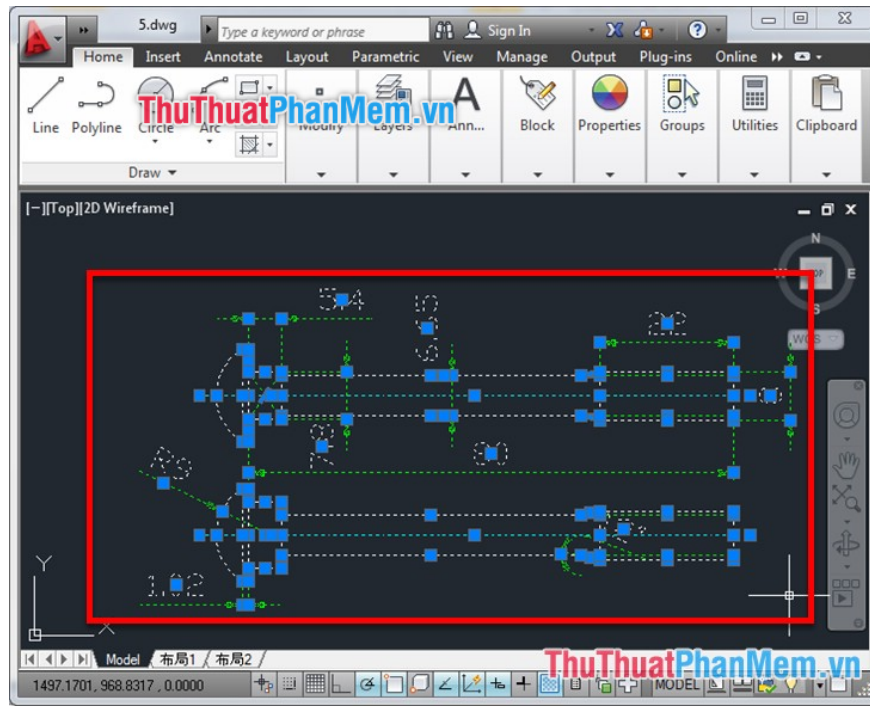
**Step 4** : At the interface of the software, you have a few options in the *Lines and text section* such as:

- ***Make all black*** : select 2 items, all strokes and text will turn black.
- ***Width unmodified (thin lines)*** : the default setting of BetterWMF, when printed, will have thin strokes.
- ***Fixed linewidth (inch)*** : the printed file is darker depending on the size you enter.

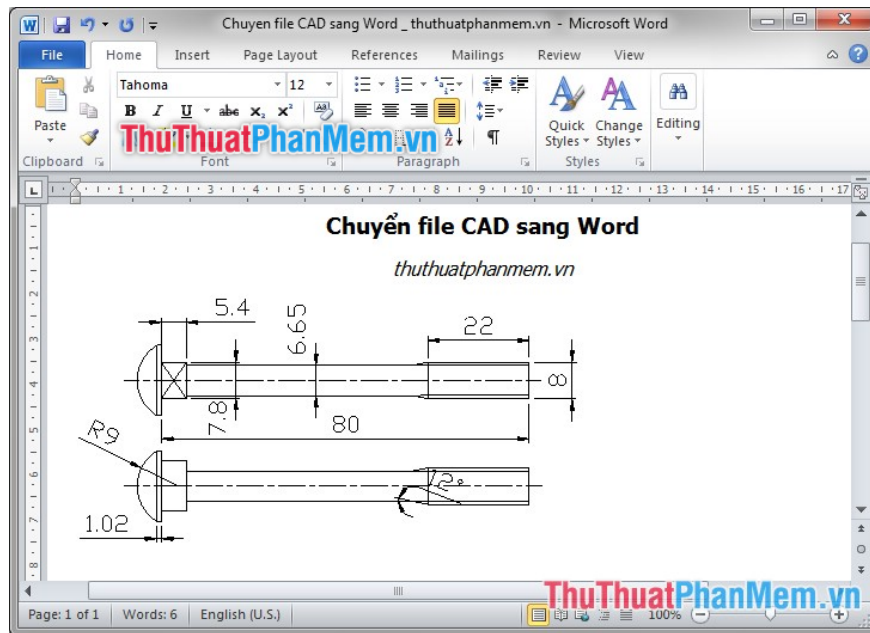
Then click **OK** to continue.



**Step 5** : Then you proceed to open the prepared CAD file. Press **Ctrl + C** to copy the area you want to convert to Word.

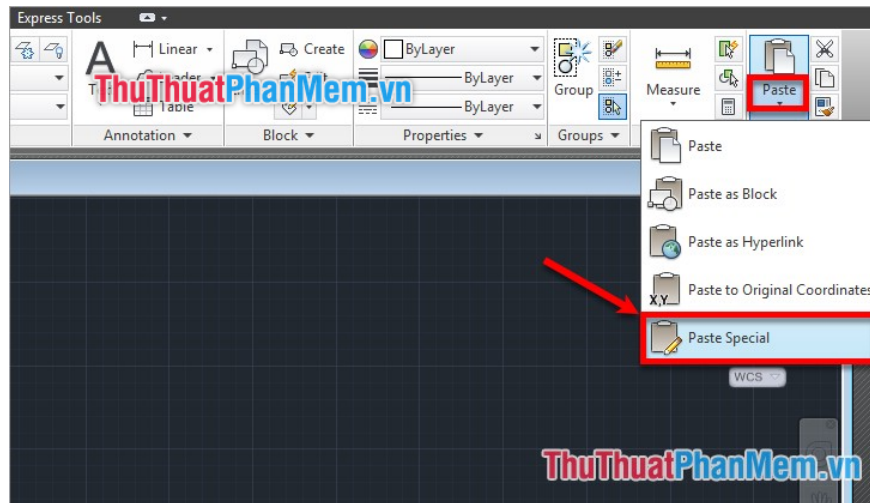


**Step 6** : Then you open the Word file, press **Ctrl + V** to paste the copied area on the CAD side into Word. At this time, BetterWMF software will help you copy - paste to ensure image quality as well as fonts.

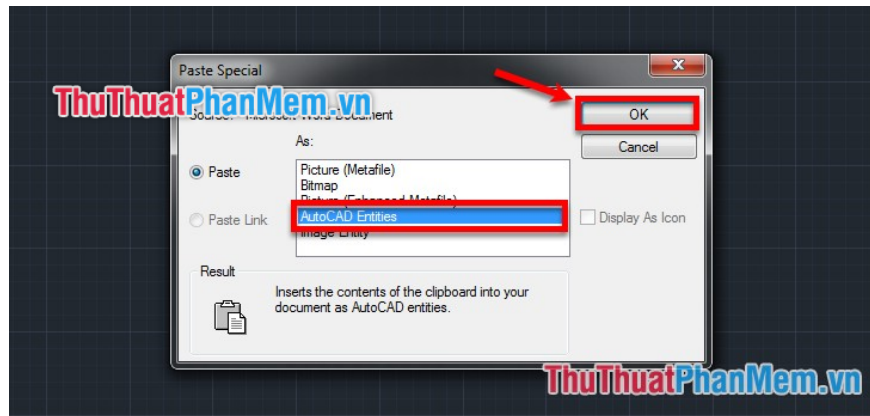


Also, in case you want to **copy Word back into CAD** , do the following:

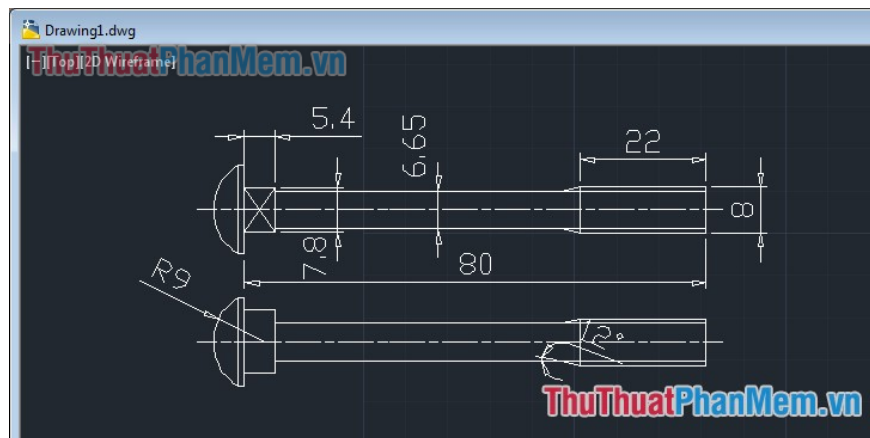
- Press **Ctrl + C** to copy data from Word.
- Select the **Home** tab on the toolbar of AutoCard -> select the extension in **Paste** -> then select **Paste Special** .



**Paste Special** window appears, select *AutoCAD Entities* in the **Paste** section . Then select **OK** .



You then select the location and place the drawing, so that you can edit the objects in the drawing.



So moving between CAD to Word and vice versa is easy and fast, isn't it. Thank you for following the article. I wish you successful implementation!

You finished reading the article "**The software converts CAD to Word the fastest and most standard**" edited by the [TipsMake](#) team. We hope this article has provided you with many useful tech tips and tricks. You can search for similar articles on tips and guides. Thank you for reading and for following us regularly.

