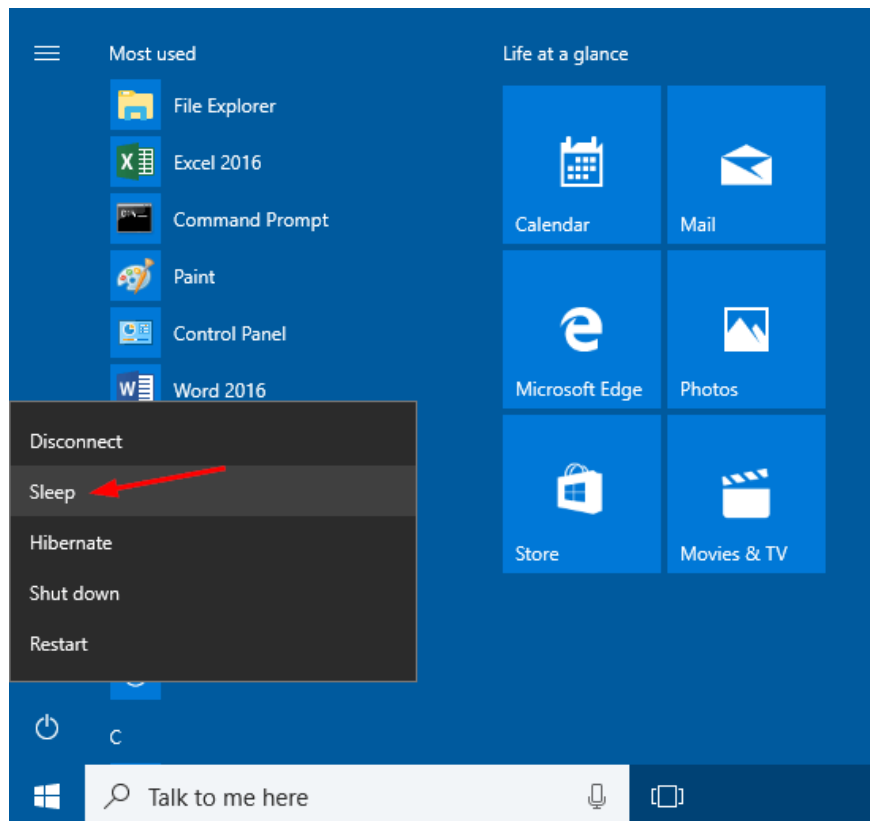


# The Sleep option is missing on Windows Power Menu 10/8/7, this is how to recover

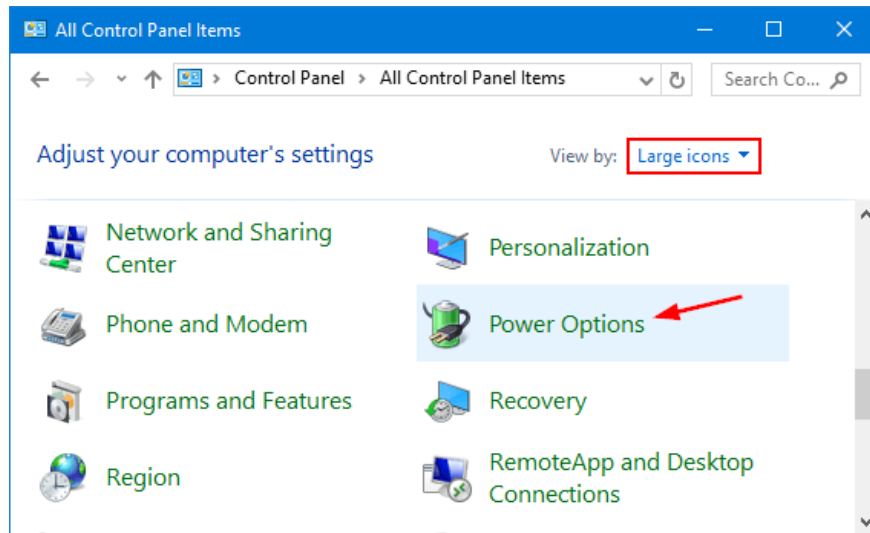
How to restore the Sleep option on the Power Menu, please refer to the following article of Network Administrator.

On a beautiful day, when opening the Power Menu on Windows 10, you find that the **Sleep** option suddenly "disappears". When you click on the **Start** button then click on the **Power** icon (or click the arrow next to Shutdown), and you cannot find the **Sleep** option anywhere. So how to restore the **Sleep** option on the Power Menu, please refer to the following article of Network Administrator.

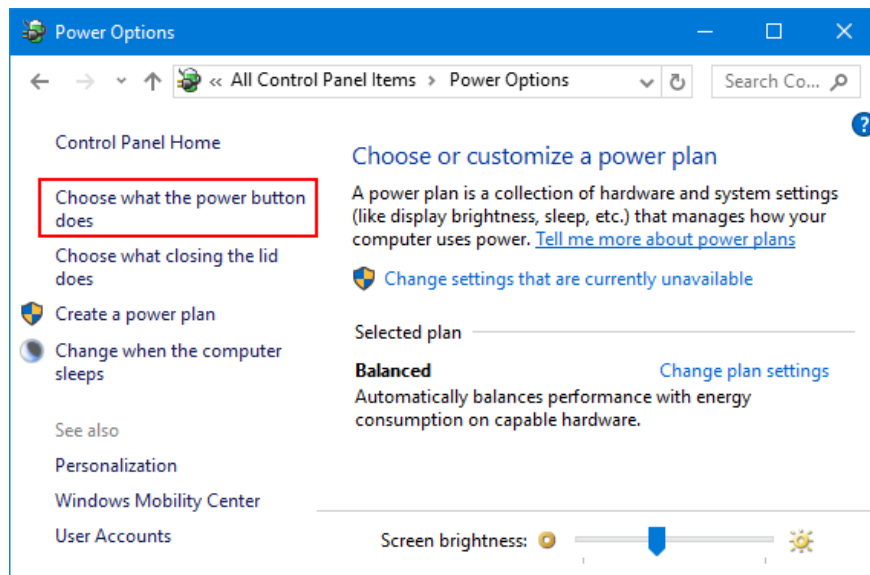


## 1. Activate Sleep Mode on the Control Panel

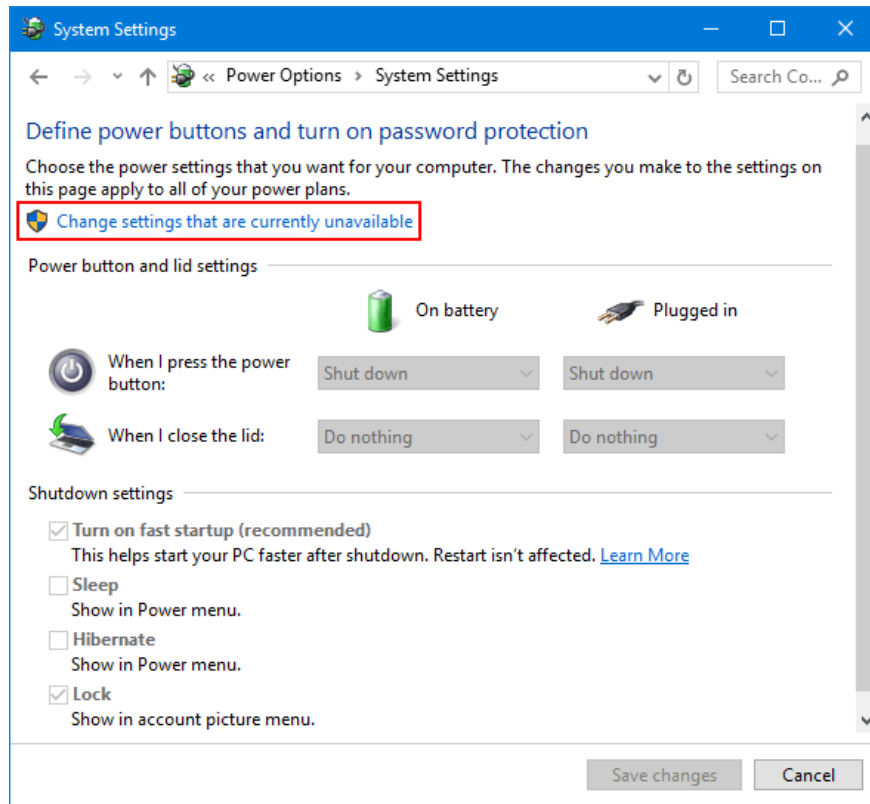
1. First open Control Panel. Then on the Control Panel window, in the **View by** setting **Large icons** then find and click **Power Options** on the list of options.



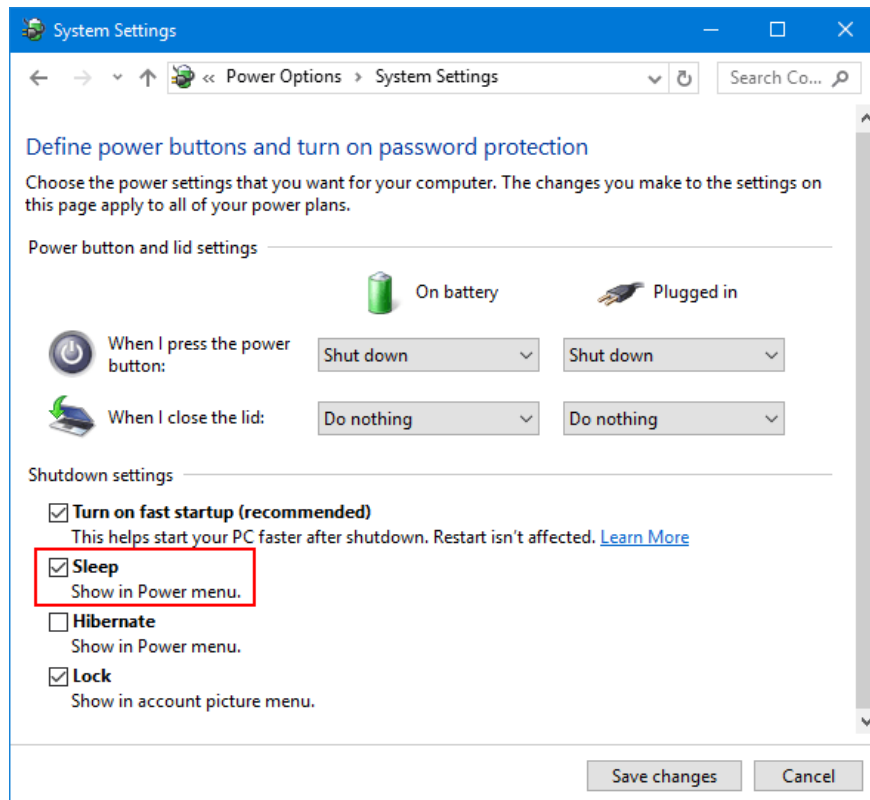
2. In the Power Options window, find and click on the link ' **Choose what the power button does** ' on the left.



3. Click the " **Change settings that are currently unavailable** " link.



4. Scroll down to **Shutdown settings** , then tick the box next to the **Sleep** option and click **Save changes** to save the changes.



## 2. Use Group Policy to activate Sleep Mode

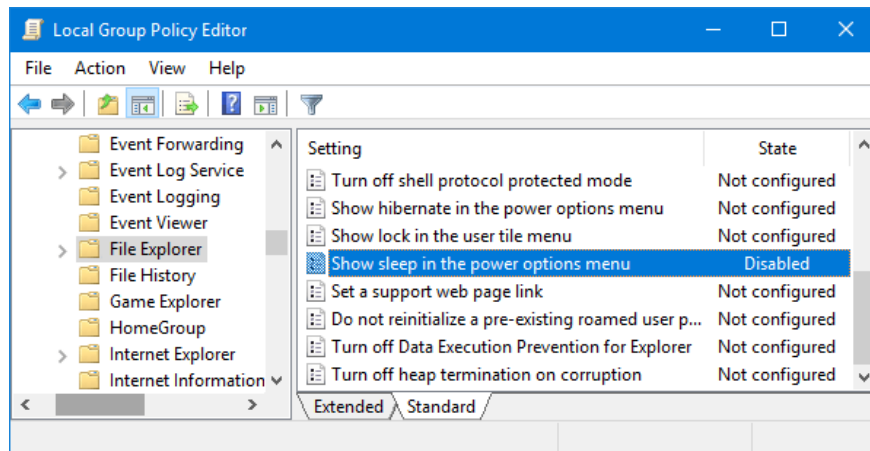
1. First open the Local Group Policy Editor window. To do this thing:

- Press **Windows + R** key combination to open the Run window.
- Then enter **gpedit.msc** there and press Enter.
- If the UAC notification window appears, click **Yes** to continue.

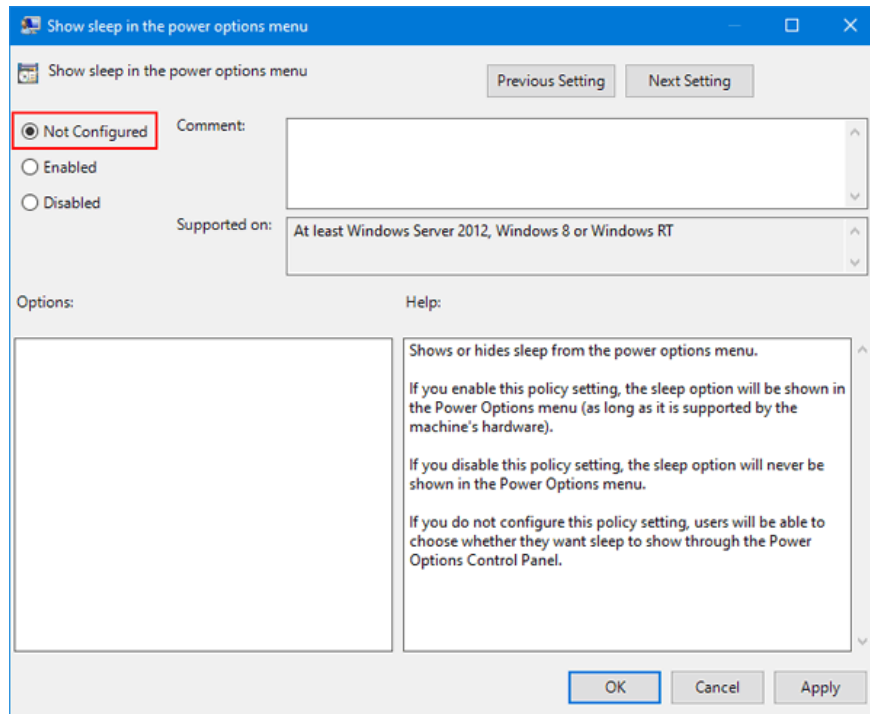
In the Local Group Policy Editor window, navigate to the key:

Computer Configuration => Administrative Templates => Windows Components => File Explorer

2. In the right pane, find and double-click the setting named **Show sleep in the power options menu** .



3. On the next window, click **Enabled** or **Not Configured** and then click **OK** .



This adds the Sleep option to the Power Options menu on your Windows computer.

### 3. Enable Connected Standby (InstantGo)

InstantGo (or formerly known as Connected Standby) is a smart feature on Windows 10 and Windows 8. This feature allows a user's computer to maintain network connectivity even when the computer is in Sleep mode. However, if you disable InstantGo, you can also disable the Standby / Sleep mode. Therefore to fix the error option Sleep is lost on the Power Options Menu you can activate Connected Standby.

If InstantGo is disabled, follow the steps below to reactivate InstantGo:

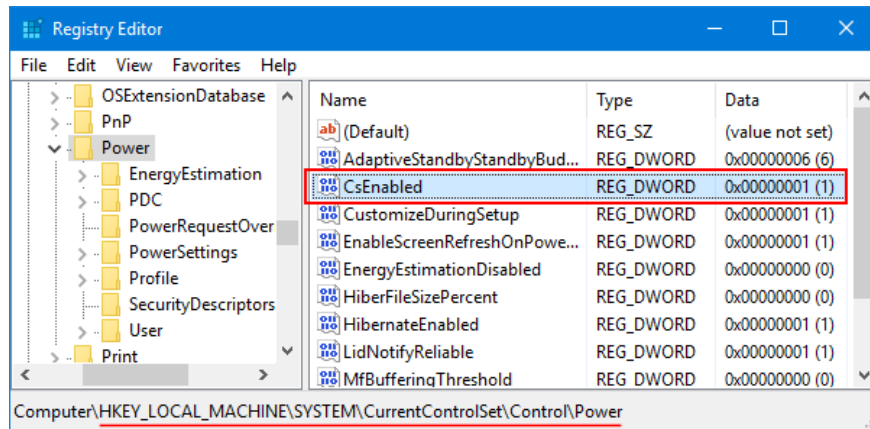
1. Open Registry Editor. To do this thing:

- Press **Windows + R** key combination to open the Run command window.
- Enter **regedit** there and press **Enter** to open the Registry Editor window.

On the Registry Editor window, navigate to the key:

`HKEY_LOCAL_MACHINESYSTEMCurrentControlSetControlPower`

2. In the right pane, find and double-click **CsEnabled** and set the value in the Value data frame to **1**.



3. Once finished, close the Registry Editor window and restart your computer.

## 4. Install the latest version of Display Driver

If you are using the generic display driver version, the Sleep option may not appear on the Power Options Menu. So to re-display the Sleep option, you need to download and install the latest Driver Display version from the manufacturer's homepage.

### Refer to some of the following articles:

1. Remove the USB drive when the computer is in sleep mode (Sleep) is it safe?
1. Your computer requires entering a password after starting from Sleep mode, this is a fix
1. Wifi on Windows 10 does not connect after starting from Sleep mode

### Good luck!

You finished reading the article "**The Sleep option is missing on Windows Power Menu 10/8/7, this is how to recover**" edited by the [TipsMake](#) team. We hope this article has provided you with many useful tech tips and tricks. You can search for similar articles on tips and guides. Thank you for reading and for following us regularly.