

The simplest way to schedule a Windows 10 computer shutdown in 2024

Computer shutdown timer on Windows 10 is a useful feature that helps users manage computer time effectively. Built into the system, this feature helps users automatically set a time for the computer to turn off, helping to save energy and ensure that the computer does not operate for long when not in use.

One of the big benefits of using the **Windows 10 computer shutdown timer** feature is saving energy and reducing operating costs. When the computer automatically turns off after a period of non-use, it will help users reduce power consumption while improving information security and increasing user experience.

5 simplest ways to schedule Windows 10 computer shutdown in 2024

Similar to **scheduling a computer shutdown on Windows 11**, users can schedule a Windows 10 PC to shutdown in many ways. You can use the system's built-in features or use code and even the intervention of 3rd party software to automatically turn off your Windows 10 computer quickly and effectively. All are Free Download, detailed introduction below for readers to easily apply

1. Set a timer to turn off your Windows 10 laptop with the Run command

This is a simple and quick way for users to schedule a Windows 10 computer shutdown. Just open the Run dialog box and enter the command to turn off the computer shutdown timer with Windows 10 to complete the setup.

*Step 1: Press the **Windows** + **R** key combination to quickly open the Run dialog box.*

*Step 2: Enter in the dialog box the command " **Shutdown -s -t 3600** " => Click **OK** .*

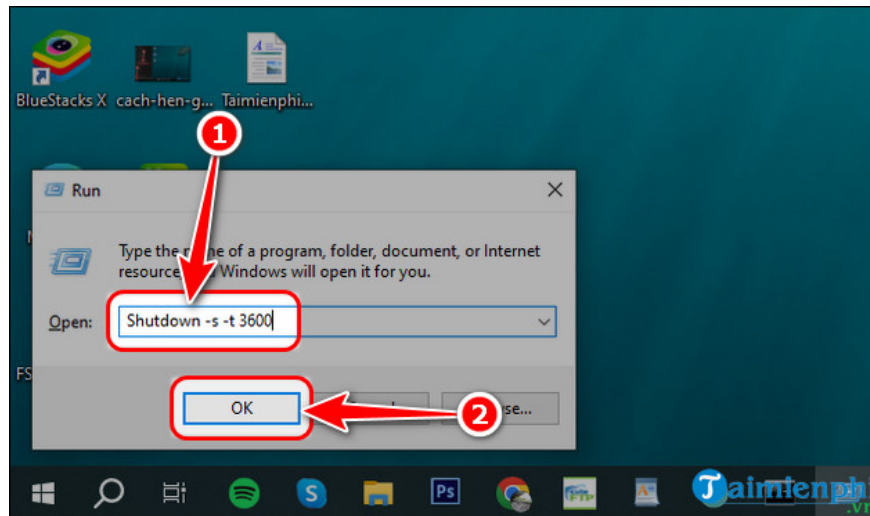
- In which:

+ **Shutdown** : Command to turn off the computer

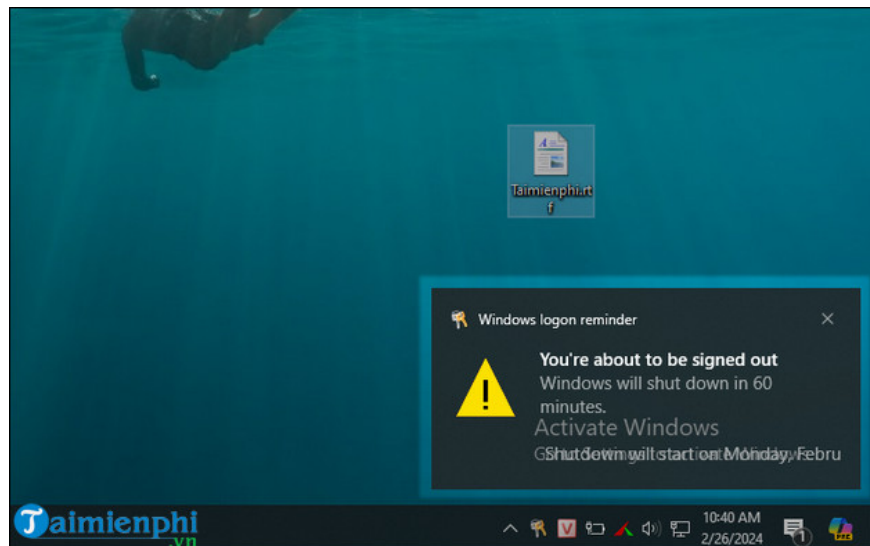
+ **s** : Abbreviation for shutdown.

+ **t** : Abbreviation for time

+ **3600** : Shutdown timer time. This value is measured in seconds and is optionally set by the user.



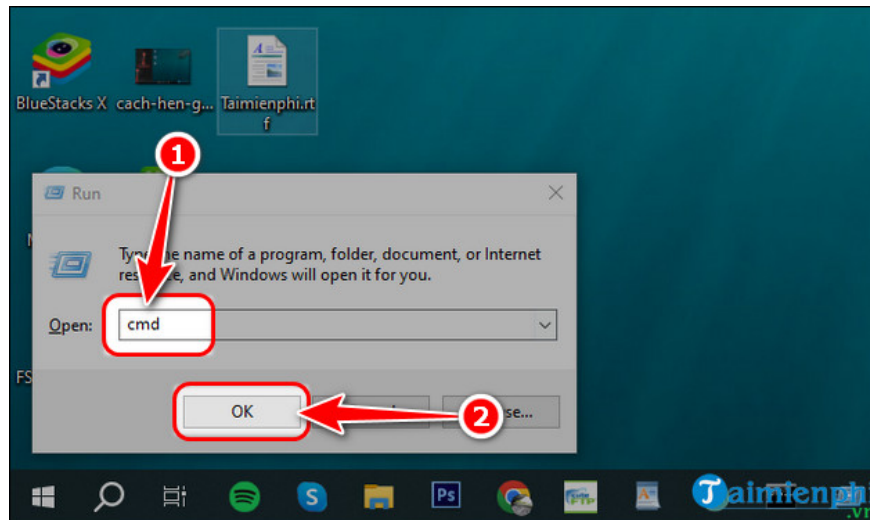
- At this time, the notification that the computer will automatically turn off after the time you just set will appear in the bottom right corner of the screen.



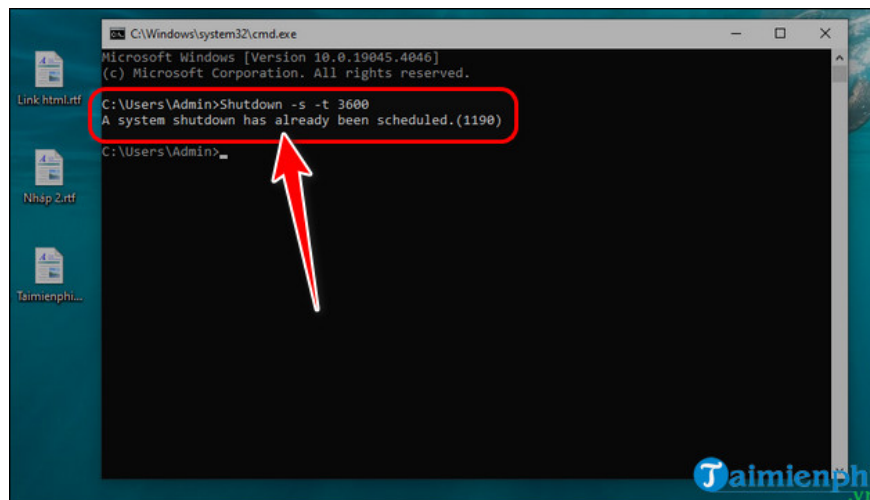
2. Schedule Windows 10 computer shutdown using Command Prompt

*Step 1: Press the **Windows** + **R** keyboard shortcut to quickly launch the Run dialog box .*

*Step 2: Enter the **cmd** command => Click **OK** to open the Command Prompt dialog box.*



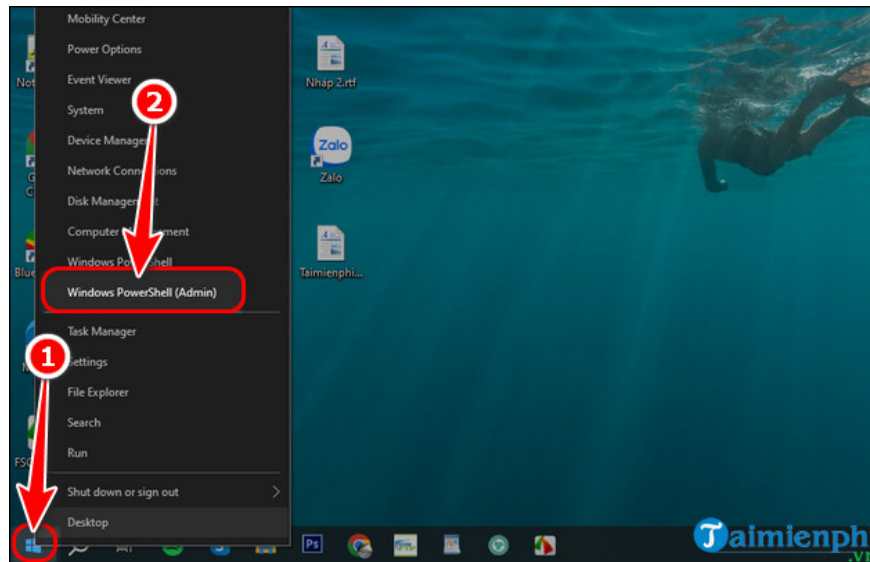
Step 3: Enter the command **shutdown -s -t 3600** (ie 60 minutes the computer automatically shuts down) and press **Enter** . The system will count down the time and turn off the computer after 60 minutes.



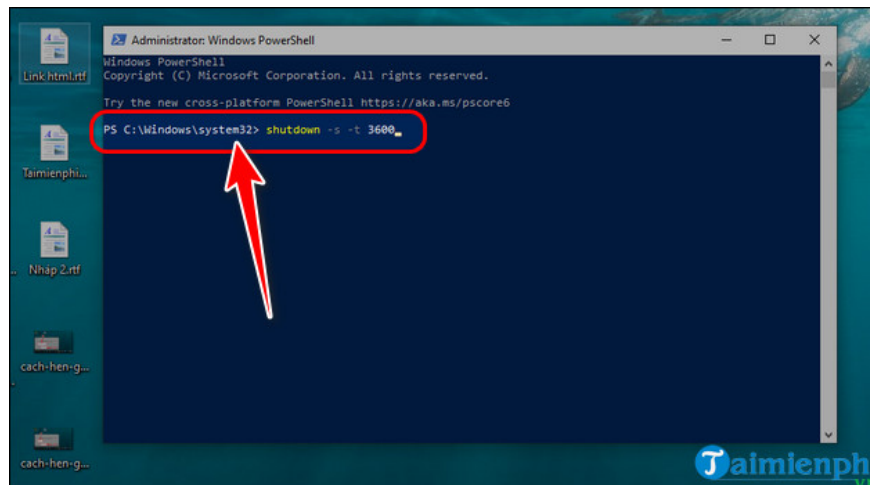
Windows 10 cmd shutdown timer

3. Schedule Windows 10 computer shutdown via Windows PowerShell

Step 1: Right click on the Windows icon => Select **Windows PowerShell (Admin)**.



Step 2: Enter the command line **shutdown -s -t 3600** and press **Enter** to set up automatic shutdown of Windows 10 computer after 60 minutes of operation.



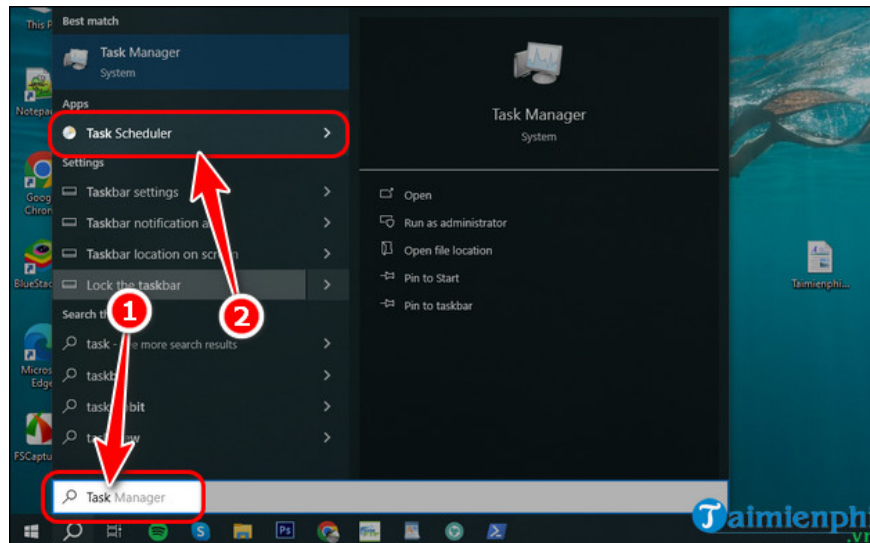
Schedule shutdown of Windows 10 PowerShell

4. Schedule Windows 10 computer shutdown using Task Scheduler for multiple days

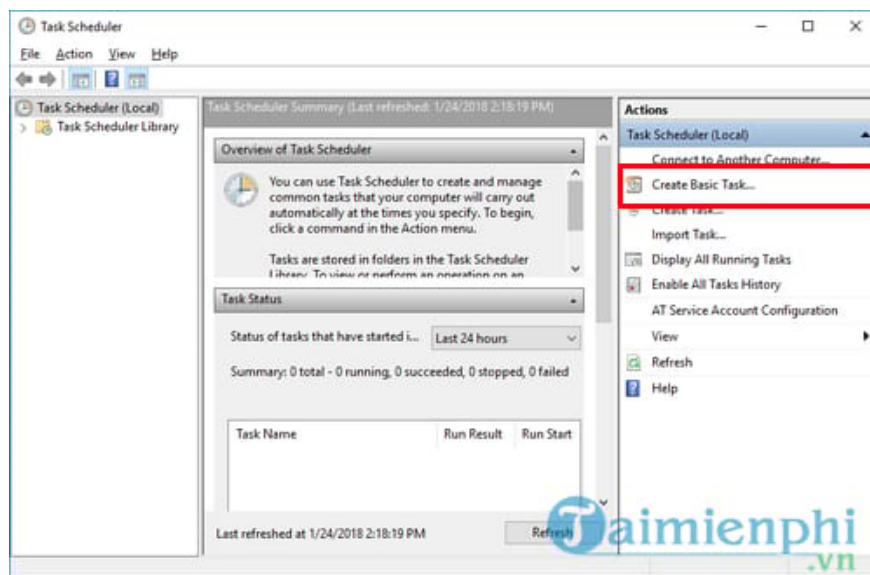
Performing a shutdown via the Shutdown command in part 1 can only schedule a one-time shutdown and when you want to continue working, the computer will still turn off at the set time. Here, if you use Scheduler, it allows you to schedule your laptop to turn off in multiple days with the available schedule and overcome the above disadvantages.

Step 1: Press the key combination **Win + S** to open the Search dialog box => Enter the keyword **Task Scheduler** in the empty box.

Step 2: Open the Task Scheduler software .

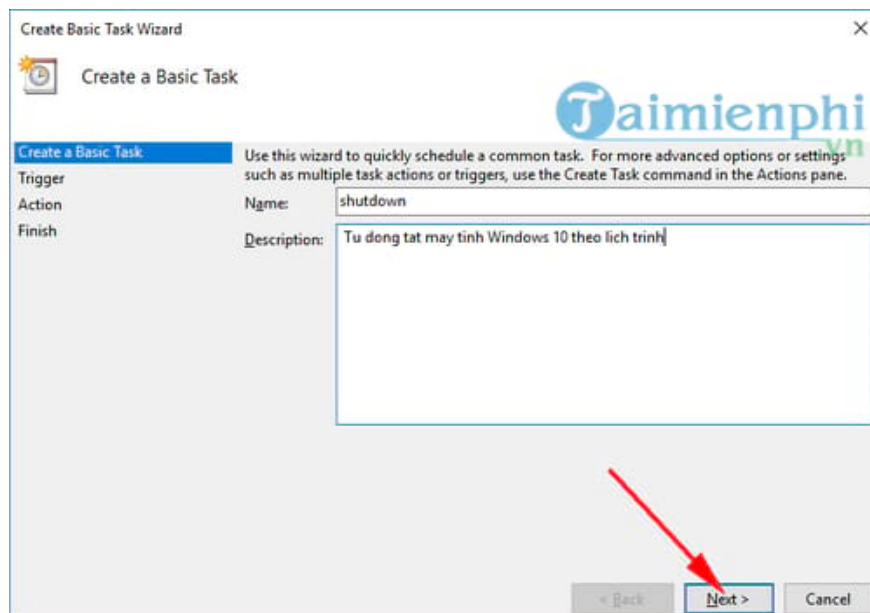


Step 3: Select **Create Basic Task**.



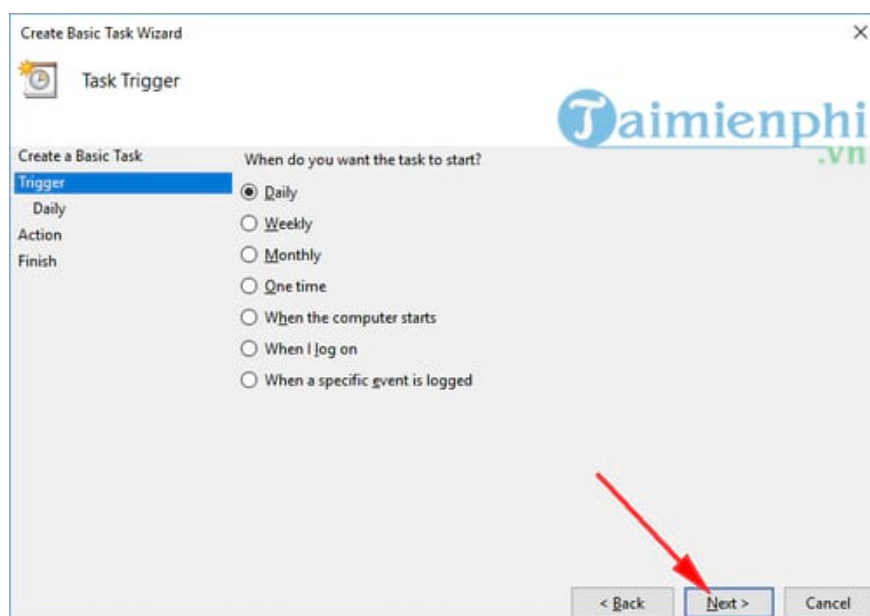
Step 3: Fill in the information required in the **Create a Basic Task** tab .

- **Name:** You enter the name you want to give the task, for example, here I set it as **shutdown**.
- **Description:** You write the description as shown below => Click **Next** to go to the next step.



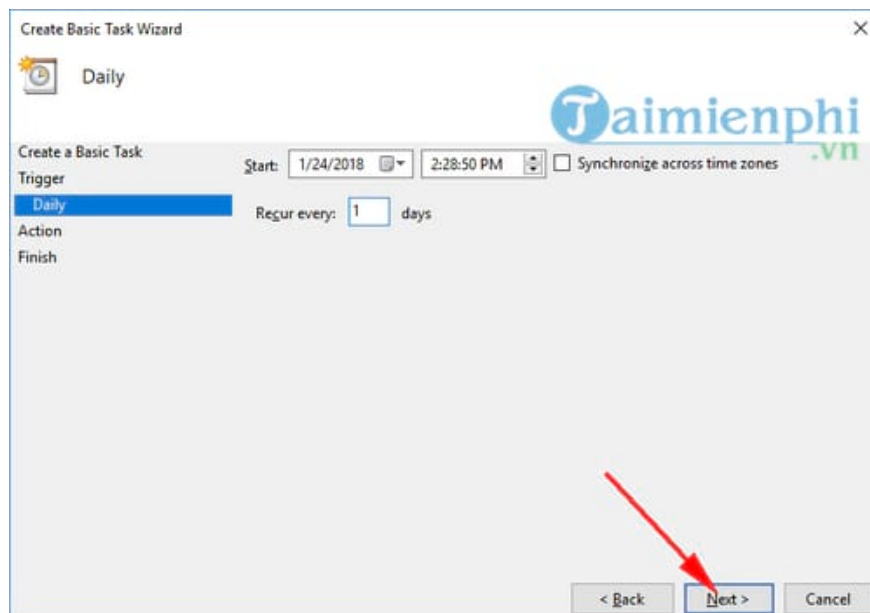
Step 4: Switch to the Trigger tab

- Customize the newly created task launch schedule daily (Daily), weekly (Weekly),.=> Click **Next**.



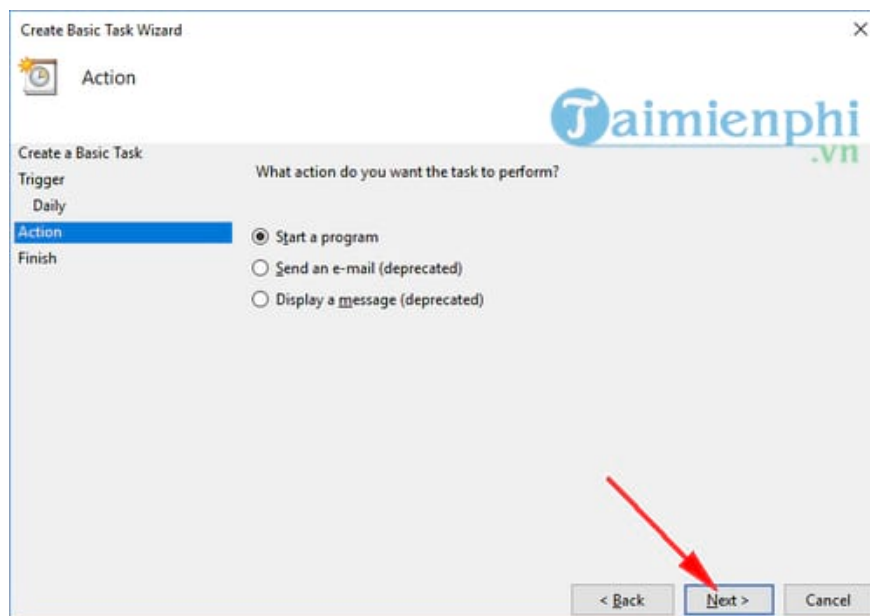
- In the **Start section**: You choose the time to schedule automatic shutdown and the date to start implementing this setting.

- In the **Recur Every section**: Fill in the periodic shutdown time, you can choose 1 day to perform the scheduled shutdown every day => Click **Next** .



Note: In case computer users frequently change time zones by location or country, they should check the **Synchronize across time zones** box to automatically synchronize the task to the correct time zone and turn off the computer on schedule. you have installed.

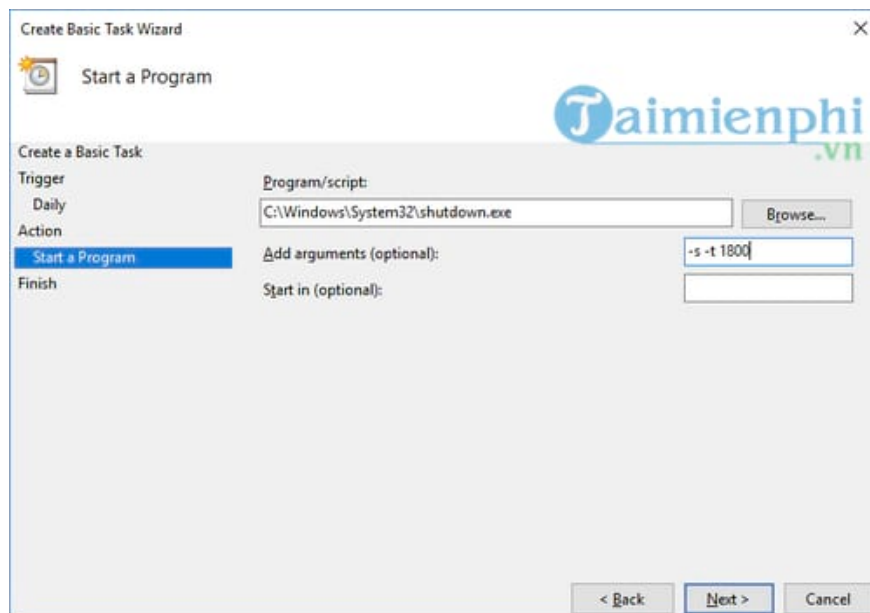
Step 6: Next interface, select Start a program => Click Next.



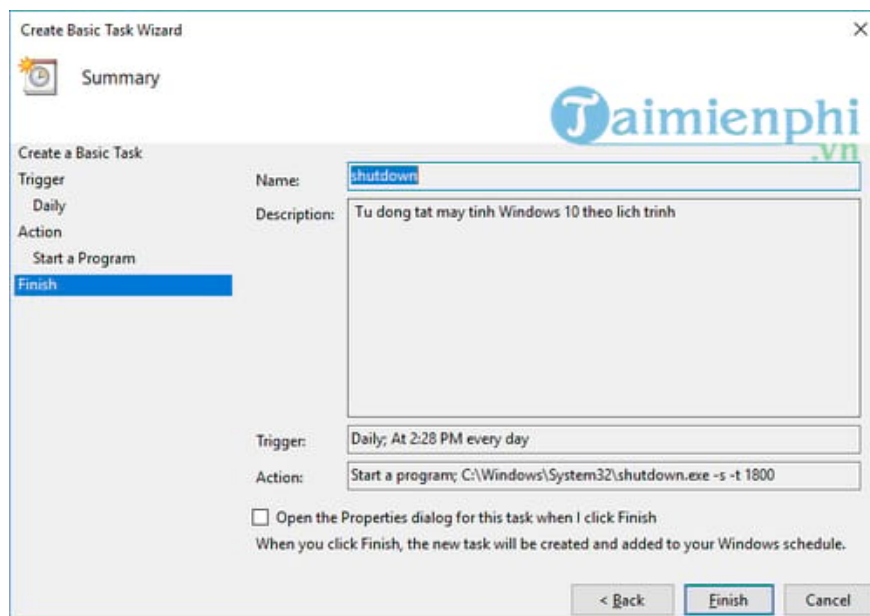
Step 7: Switch to **Action** tab => Select **Start a Program**.

- At **Program/Script:** Paste the path **C:WindowsSystem32** and select **Shutdown.exe** into the empty box.

- At **Add arguments:** Enter parameters **-s -t 1800** (1800 is a unit of seconds equivalent to 30 minutes) => Click **Next**



Step 8: Click **Finish** to complete and activate the active task.



5. Use Windows 10 laptop shutdown timer software

In addition to using the features available on the system, using Windows 10 computer shutdown timer software also brings many advantages, additions and expansions compared to features available in Windows. Some advantages when using computer shutdown timer software:

- **Flexibility:** Windows 10 computer shutdown timer software often provides greater flexibility than features available in Windows. Users can set up many different types of computer shutdown schedules, including turning off the computer after a specific amount of time, at a certain time, or after a specific task is completed.
- **Advanced features:** Computer shutdown timer software often comes with advanced features such as custom energy saving modes, the ability to turn off the computer remotely via the internet and the ability to customize warnings before Turn off the computer so the user can save his work.
- **Cross-platform support:** Some computer shutdown timer software is available not only for Windows but also

for other operating systems such as macOS and Linux, allowing users to manage computer uptime across multiple platforms. different platforms.

- **Friendly interface:** Windows 10 computer shutdown timer software often has an easy-to-use and user-friendly graphical interface, helping them easily set up and manage computer shutdown schedules effectively. .

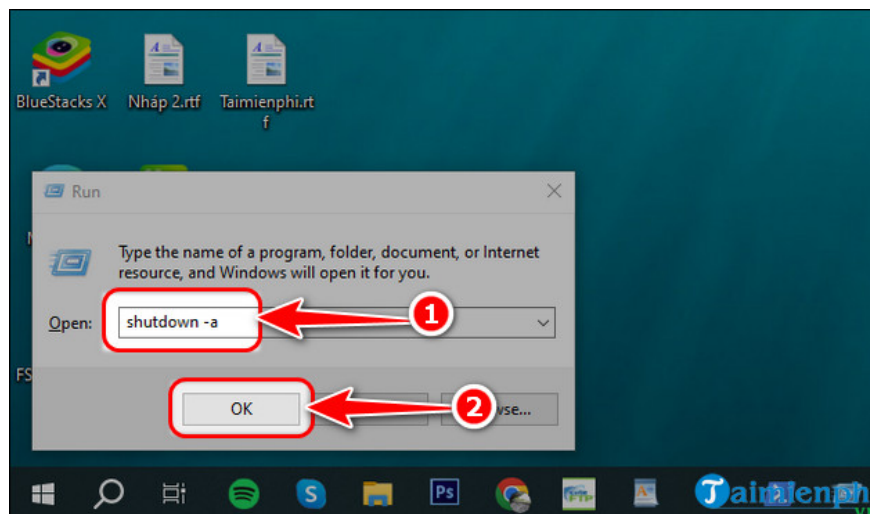
Some outstanding Windows 10 computer shutdown timer software that you can download and use are: **Auto Shutdown** , ShutdownGuard, Shutter, Windows Shutdown Assistant,.

In case you are downloading data using IDM, you can also optionally set a **timer to turn off the computer using IDM** when downloading the file is complete through setting Options right on this software itself.

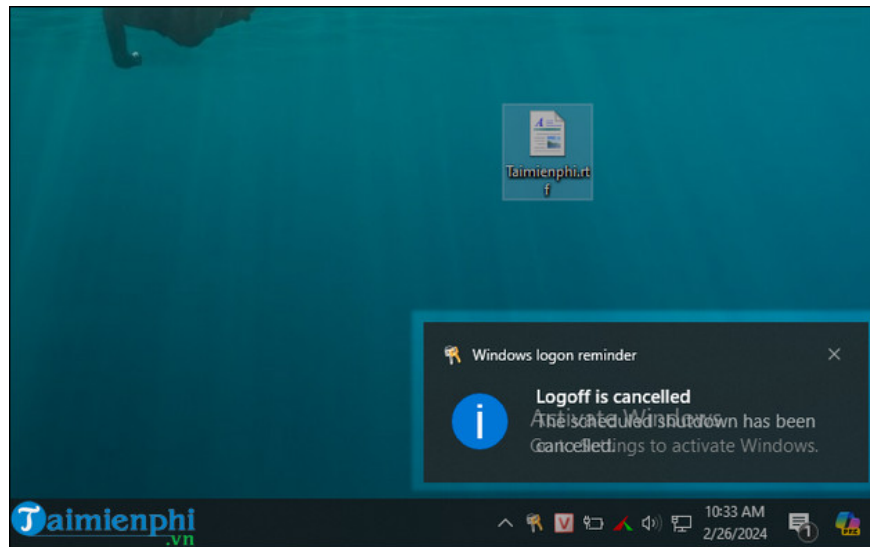
How to cancel computer shutdown timer on Windows 10

- **Method 1: Cancel the computer shutdown timer with command.**

+ **Press the Windows + R** key combination and enter the command: **shutdown -a**

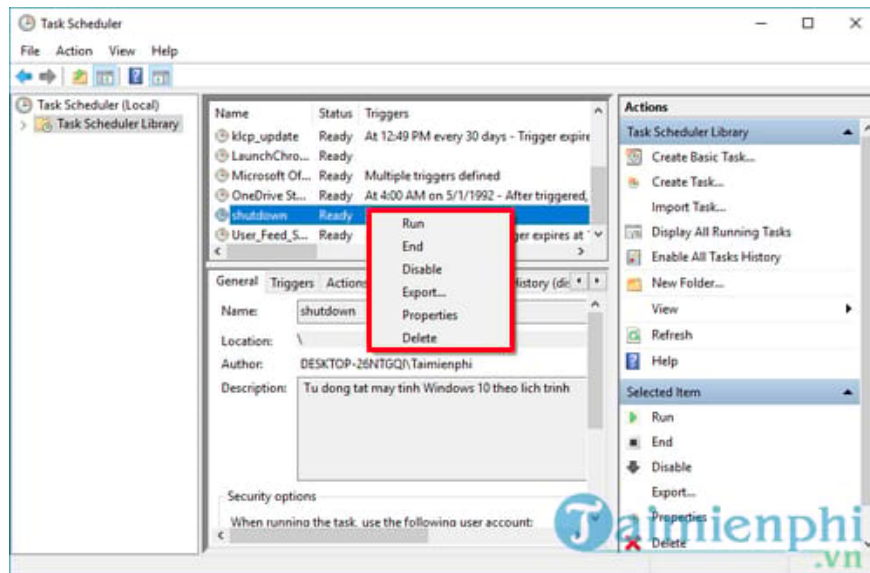


+ Press **Enter** or click **OK** and you will see a message displaying that you have canceled the command to turn off the computer



Method 2: Cancel the computer shutdown timer using Task Scheduler

- Go to **Task Scheduler** => select **Task Scheduler Library**.
- Right-click on the task name you just created (Shutdown) and select the options you want.
 - + **End** : Completely stops the task and can restart it if desired.
 - + **Disable** : Temporarily turns off the task and can be reactivated.
 - + **Delete** : Delete and stop the task completely.



Above are 5 ways to set a timer to turn off your Windows 10 computer that readers can apply to help your current work go smoothly and not affect your other working time much. Wishing readers success!

You finished reading the article "**The simplest way to schedule a Windows 10 computer shutdown in 2024**" edited by the [TipsMake](#) team. We hope this article has provided you with many useful tech tips and tricks. You can search for similar articles on tips and guides. Thank you for reading and for following us regularly.
