

The simplest way to remotely power on a computer using UltraViewer.

UltraViewer has just updated with a new feature that allows users to remotely power on their computers. This enables users to control the power on and off of their devices, whether they are working online or providing remote technical support.

For convenient remote control of your device, in addition to **disabling sleep mode on your computer using UltraViewer** , you can also set a time to automatically turn on your computer remotely using UltraViewer so you can use the device whenever you want.



Instructions on how to remotely power on a computer using UltraViewer

How to remotely start a computer using UltraViewer

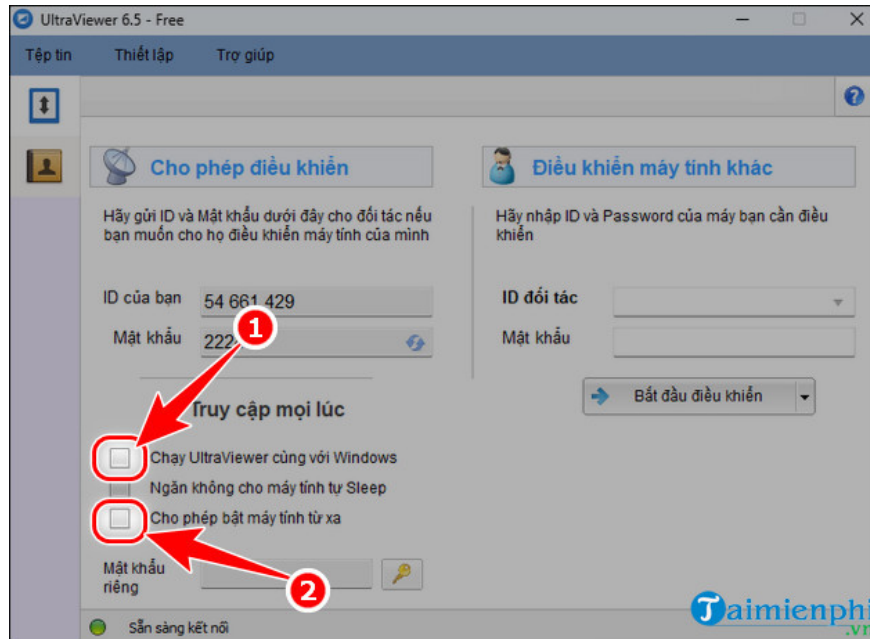
2.1 On the partner computer, the machine is being controlled.

Step 1: Download and install UltraViewer using the link below.

- Download the latest version of **UltraViewer for PC**.

Step 2: Open **UltraViewer** , check the boxes for "**Run UltraViewer with Windows**" and "Allow turn on computer remotely ".

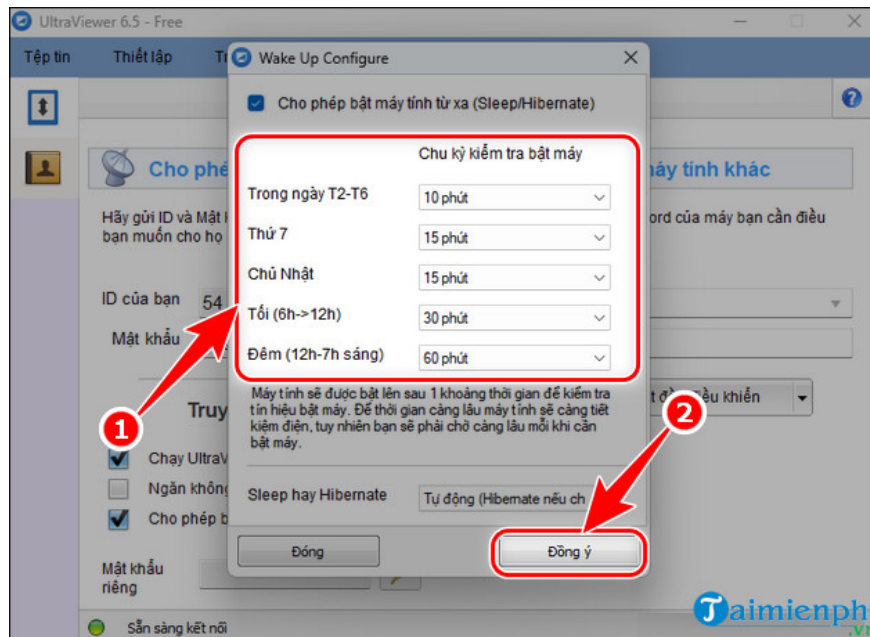
- **Running UltraViewer with Windows:** UltraViewer will run every time the computer is turned on. If you disable UltraViewer from starting with Windows , you will no longer be able to control the computer remotely.



Step 3: Set the time in the **Wake Up Configure** table => click **OK**.

- The computer startup time will be set daily with specific time intervals.

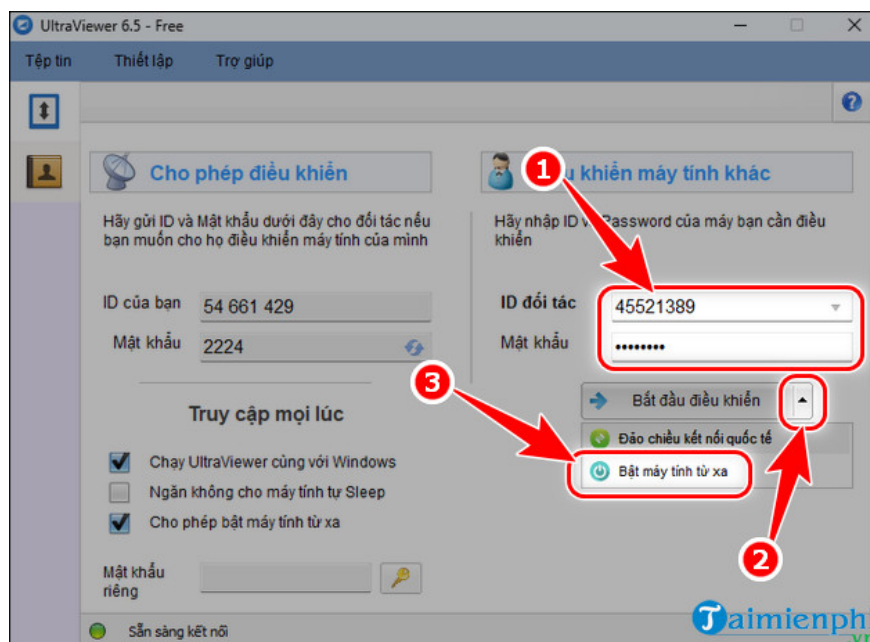
=> **For example: Taimienphi sets the computer to start up every 10 minutes between 7 AM and 6 PM on weekdays (Monday to Friday).**



2.2 On the control panel

Step 1: Enter the **ID and password of the partner computer**, the device you want to control, or remotely power on.

Step 2: Select the **triangle icon** => Press **Remote Power On** to start the device.



After remotely turning on the computer using UltraViewer, the device you control will start up at the time you previously set to connect and use it. If you encounter UltraViewer connection errors, please apply the following troubleshooting steps **for common UltraViewer remote computer connection problems** .

Additionally, if you don't know how to remotely control a computer using Ultraviewer, you can refer to the instructions shared in the article below to learn how.

You finished reading the article "**The simplest way to remotely power on a computer using UltraViewer.**" edited by the [TipsMake](#) team. We hope this article has provided you with many useful tech tips and tricks. You can search for similar articles on tips and guides. Thank you for reading and for following us regularly.