

The simplest way to fix a Macbook with an SSD error and not recognizing the hard drive

Some Macbook lines or recent versions of macOS are currently experiencing many compatibility issues, causing many devices to not be able to recognize the hard drive they are using. If you are encountering this situation, please refer to the method to fix the error of Macbook having SSD drive error, not recognizing SSD hard drive shared in the article below.

SSD drive errors can occur when SSD drives are used for long periods of time. However, if the SSD has just been used, the cause may lie in your Macbook. To help you fix the problem of **Macbook having SSD failure**, TipsMake has compiled some solutions below.

1. How to protect data when Macbook has SSD failure

A MacBook with a faulty SSD means you cannot access the data in that hard drive, leading to the risk of losing important data. To avoid this from happening, you should back up this SSD data immediately.

Another reason for backing up data is because formatting an SSD is the most effective way to fix the above error. Therefore, you need to back up important data before wiping your hard drive.

In case you have backed up your hard drive, you can skip this step. If not, you should use data backup software to ensure data is safe.

2. Causes of Macbook SSD failure

There are many reasons why your Macbook has an SSD error and cannot recognize your SSD. Some common causes can be listed as follows:

2.1. The hard drive dock or SATA to USB adapter is damaged

Typically, you will need a SATA to USB adapter or a hard drive dock to connect your Macbook to external SSDs. If the Mac cannot recognize the SSD, it is likely that your adapter is not compatible with the SSD's SATA interface or your hard drive dock is damaged.

2.2. The external SSD is new and has not been formatted

This usually happens when you try to back up data from the SSD in your Macbook to an external SSD. The reason is that some new SSDs do not have the file system formatted, making it impossible for the Macbook to recognize and interact with it. Therefore, you cannot access these SSDs.

2.3. The external SSD has a file system type that the Mac doesn't recognize

In some cases, a Macbook will have an SSD drive error if the drive has a file system type that macOS does not recognize. For example, macOS cannot recognize a drive formatted for the Linux operating system.

2.4. The external SSD needs to be updated

This error often occurs on Samsung T5/T3 SSD lines because you need to install **Samsung Portable SSD** to unlock and update the drive regularly. If you don't do this step, you won't be able to use the drive, instead you will see the message " **No SamSung portable SSD is connected** ".

2.5. External SSD is hidden on Mac

Many times, your Macbook actually recognizes your SSD, but the device's settings don't allow the drive to show up in Finder, the home screen, or even in Disk Utility because of certain options.

2.6. The external SSD has been damaged

Another common cause of SSD failure on a Macbook is that the SSD has been disconnected incorrectly, causing damage to the drive's file system or partition. Besides, using an SSD regularly will also reduce the life of the hard drive. Therefore, you should use frequent **hard drive health check software** to ensure your SSD is still in the best condition.

3. How to fix Macbook with SSD drive error

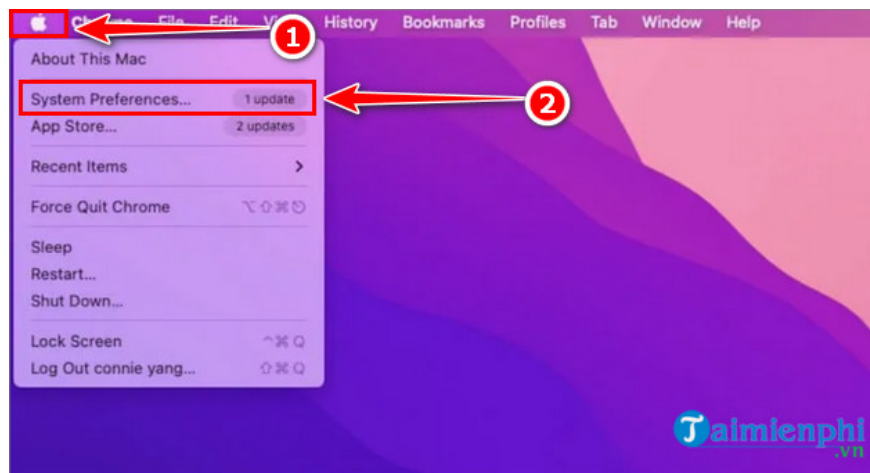
Method 1: Check if the SSD is plugged in properly

Because all SSD drives use the SATA connection standard, when the Macbook does not recognize the SSD, it can lead to **an error where the Macbook freezes** and cannot be controlled. The first thing you need to do is check if this hard drive is plugged in correctly in the following ways:

- Test the cable by trying another piece of cable.
- Check if your SSD uses SATA I, II or III standard to choose the appropriate hard drive adapter/dock cable.
- Use a new SATA to USB conversion cable, make sure this cable works well when used with another hard drive.
- Try connecting the SSD directly to the Macbook if this hard drive uses a type-C port.

In case the SSD you are using is SamSung T5/T3 and you receive the message **System Extension Blocked** and **No SamSung portable SSD has connected** when running **SamSung Portable SSD Software** , do the following steps:

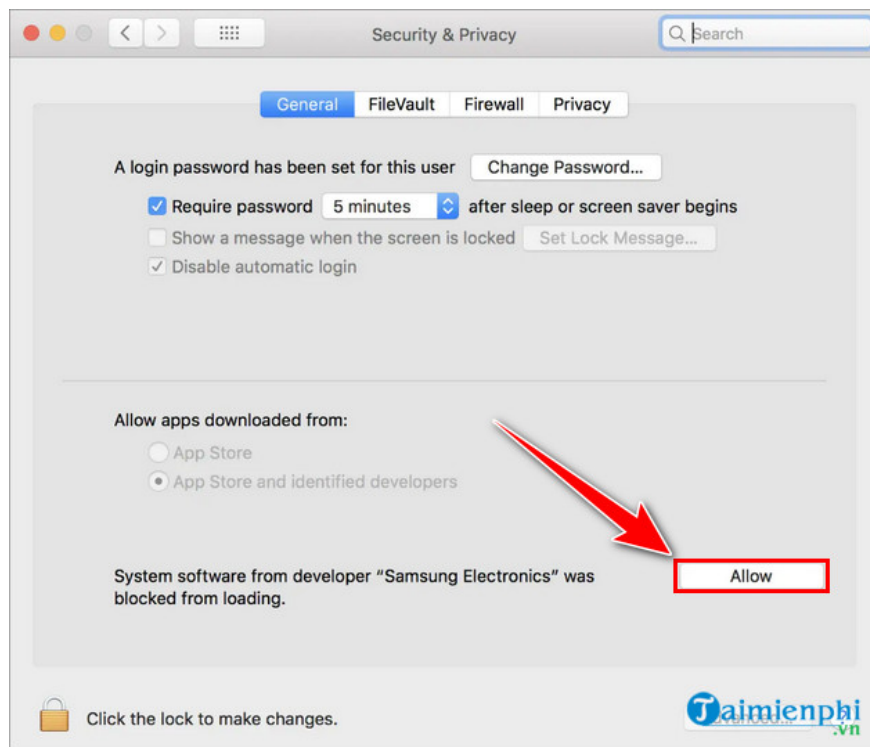
Step 1 : Open **System References** .



Step 2 : Open Security & Privacy .

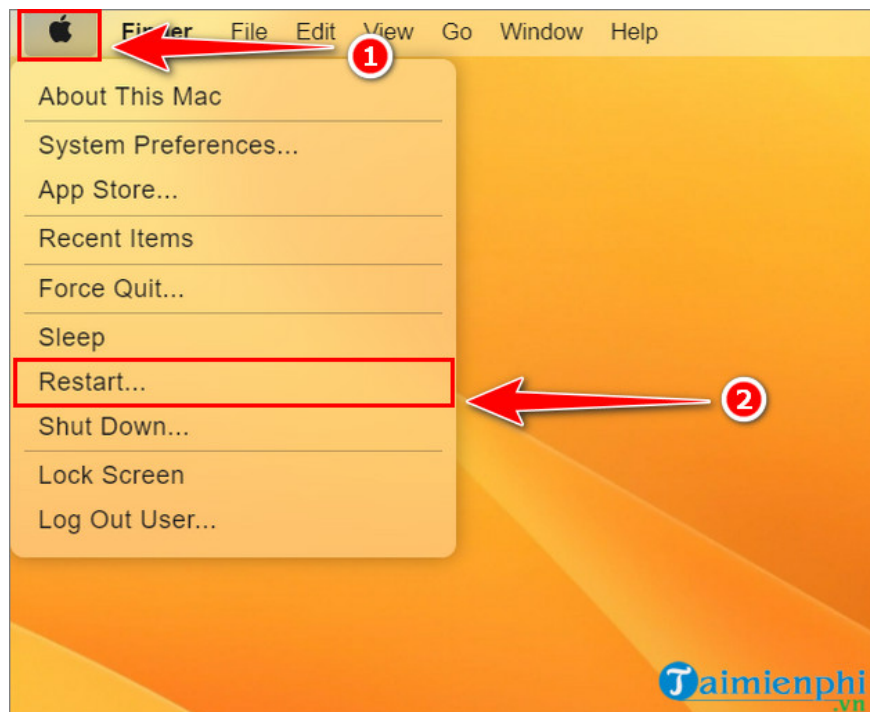


Step 3 : Find the line System software from SamSung Electronics was blocked from loading and select Allow .



Method 2: Restart Macbook

Occasionally, a system error may occur and cause the Macbook to fail with its SSD drive. However you can fix this error just by restarting your Macbook. This way, the Macbook will reboot like new, especially when the USB ports are all in use.



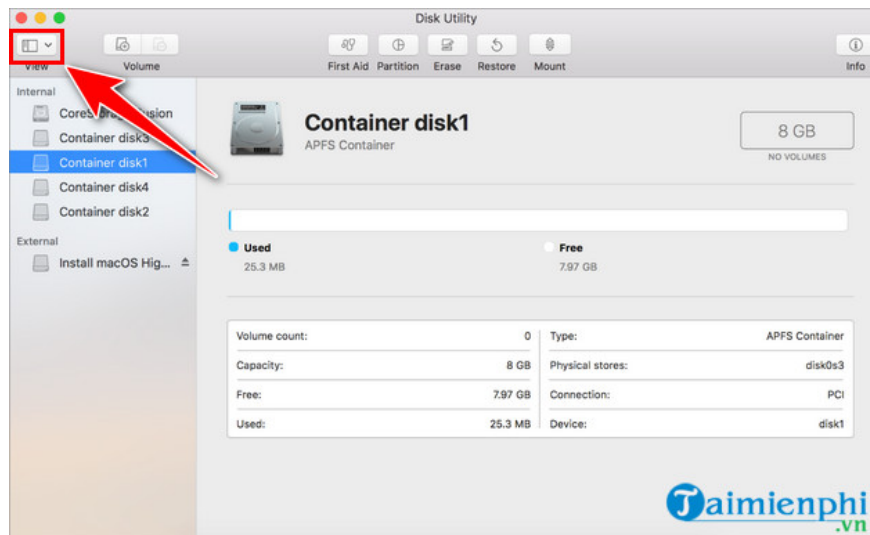
Method 3: Find the lost drive in Disk Utility

When a Macbook has an SSD error, the most effective way is to check if the hard drive is displayed in Disk Utility. If so, you need to make sure that this SSD does not have hardware problems. If not, the hard drive has been damaged by impact.

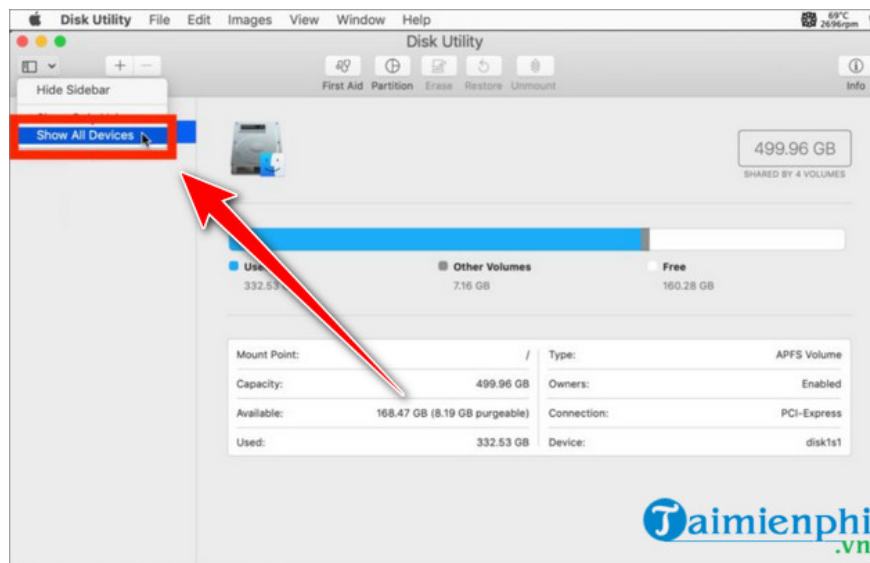
Step 1 : Open Go > Utilities .



Step 2 : Select View .

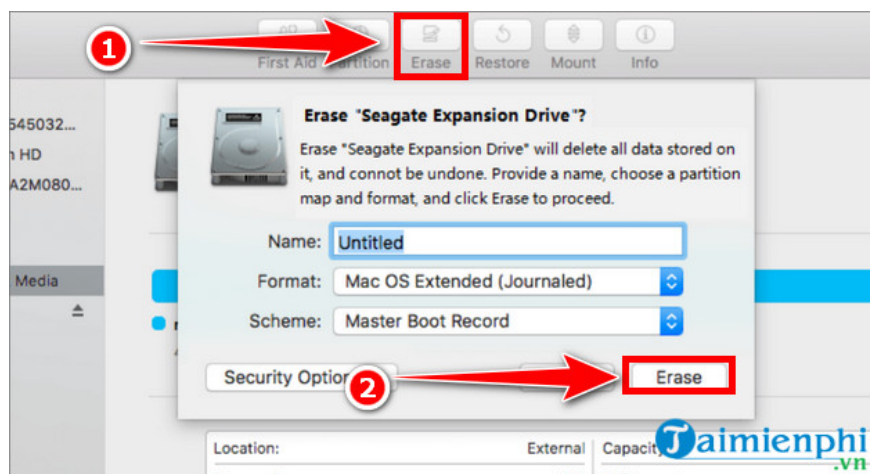


Step 3 : Select Show All Devices



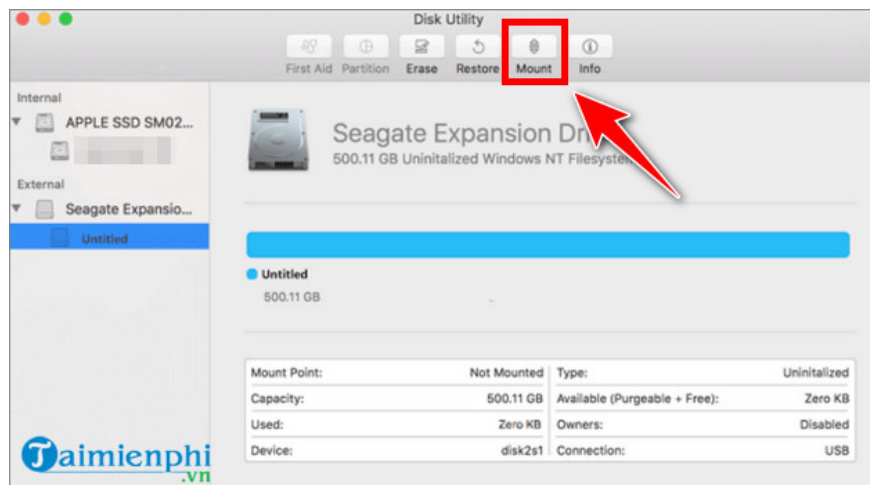
At this time, there are 3 cases that will happen:

- If the SSD has Windows NTFS format, the macOS operating system cannot write data to this hard drive. To record data, you need to install additional software.
- If the SSD has been used on another device but the Macbook cannot be recognized at this time, the file system of this SSD may not be supported or even damaged. What you need to do now is back up all data and format the hard drive.
- If it is a newly purchased SSD, it is likely that the hard drive has not been formatted. In this case, you will not see the partitions of this hard drive in the Disk Utility window, instead the message " **the disk you inserted was not readable by this computer** ". At this point, you need to make sure there is no data on the hard drive and use Disk Utility's erase function to reformat it.

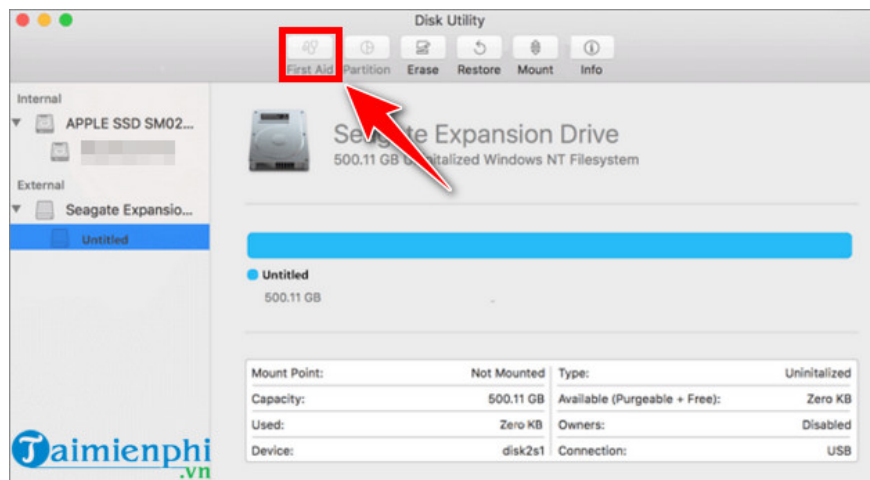


Method 4: Use the First Aid function

If your SSD is displayed in Disk Utility, you can select that hard drive and select **Mount** to show this SSD in your Macbook.



If the Mount button is dimmed, you need to use the **First Aid** function to fix SSD errors by selecting the hard drive to be repaired and selecting **First Aid** .

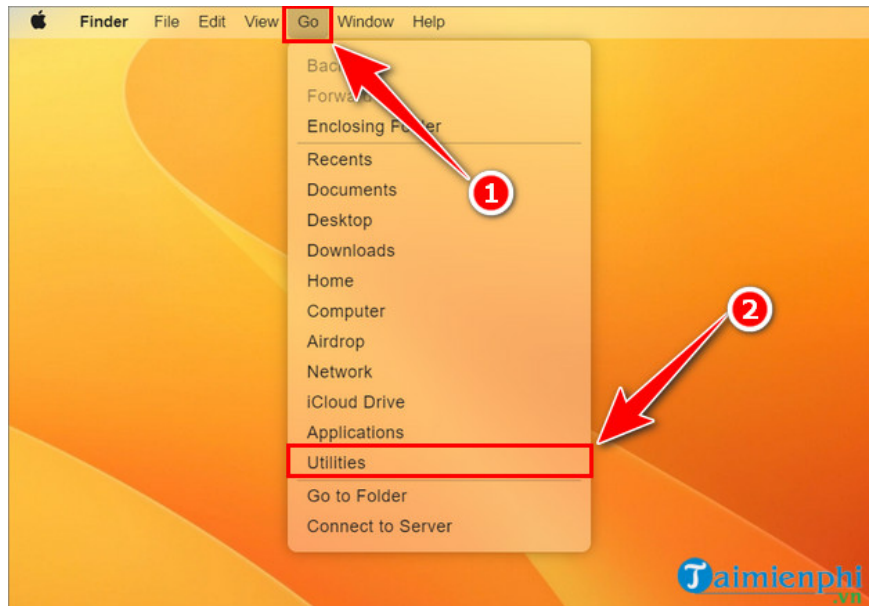


Method 5: Format the SSD after backing up data

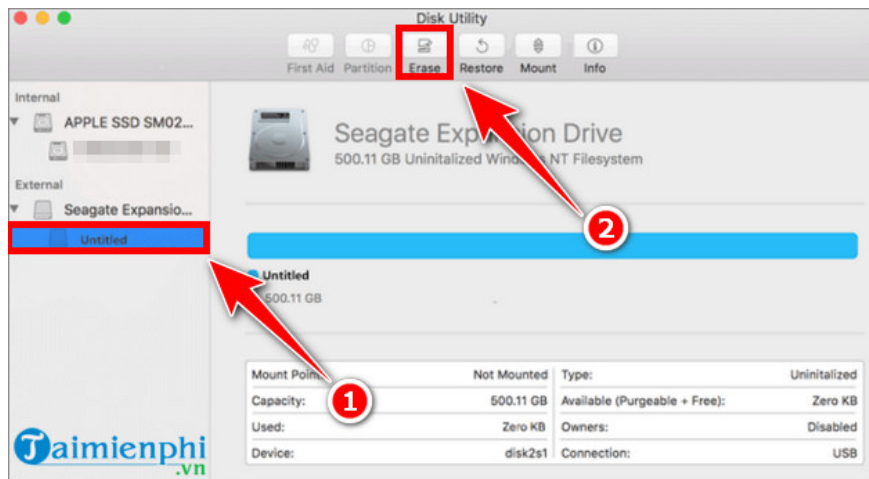
If none of the above methods work, it's likely that your SSD is damaged and needs to be reformatted. However, regardless of whether the SSD error is hardware or software, your data is still the top priority.

After successfully backing up data, you can format the SSD in the following way:

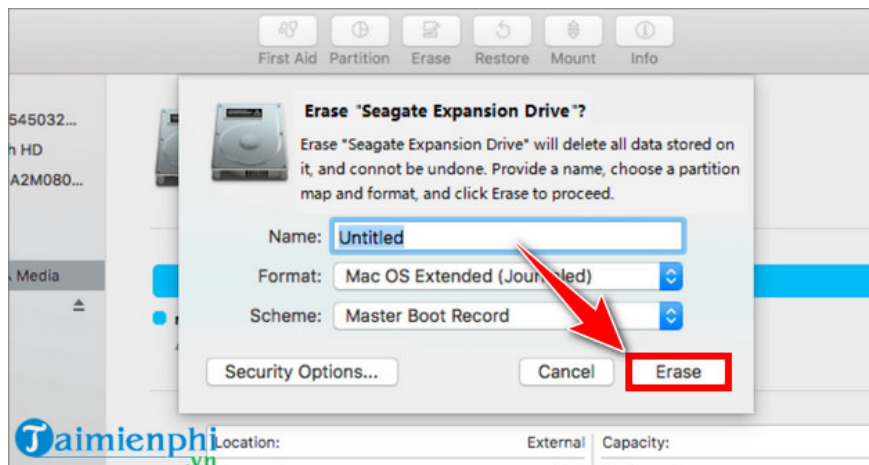
Step 1 : Open Disk Utility .



Step 2 : Select the SSD to format and select **Erase** .



Step 3 : Fill in the necessary information and select **Erase** .



Method 6: Find a reputable technician

In case your SSD does not show up in **Disk Utility** , you will need to take it to a shop as only a technician can handle the hardware issue.

So, TipsMake has introduced you how to fix Macbook with SSD drive failure. Readers can also refer to other **Mac tips** to fix common Mac errors such as fixing Bluetooth not connecting errors, apple crash errors,.

You finished reading the article "**The simplest way to fix a Macbook with an SSD error and not recognizing the hard drive**" edited by the [TipsMake](#) team. We hope this article has provided you with many useful tech tips and tricks. You can search for similar articles on tips and guides. Thank you for reading and for following us regularly.