

The simple way to fix computer errors is suddenly turned off

If you are unlucky, you are using a computer that naturally turns off. You are wondering what kind of error your computer has? This article will show you how to fix this error.

If you are unlucky, you are using a computer that will automatically turn off. You are wondering what kind of error your computer has? There are many reasons for this problem, the computer is suddenly turned off due to overheating, because the power is not provided enough, virus infection, hardware problems, .

Here are some measures to fix this sudden shutdown error. Try each one until your computer no longer turns itself off. All measures that TipsMake.com listed below apply to Windows 10, Windows 8 / 8.1 and Windows 7.

The simple way to fix computer errors is suddenly turned off

1. Try with another power supply
2. Turn off Fast Startup (Quick start)
3. Update the motherboard driver
4. Check the system temperature
 1. For desktop (Desktop):
 2. For laptops (Laptop)
5. Update the BIOS

1. Try with another power supply

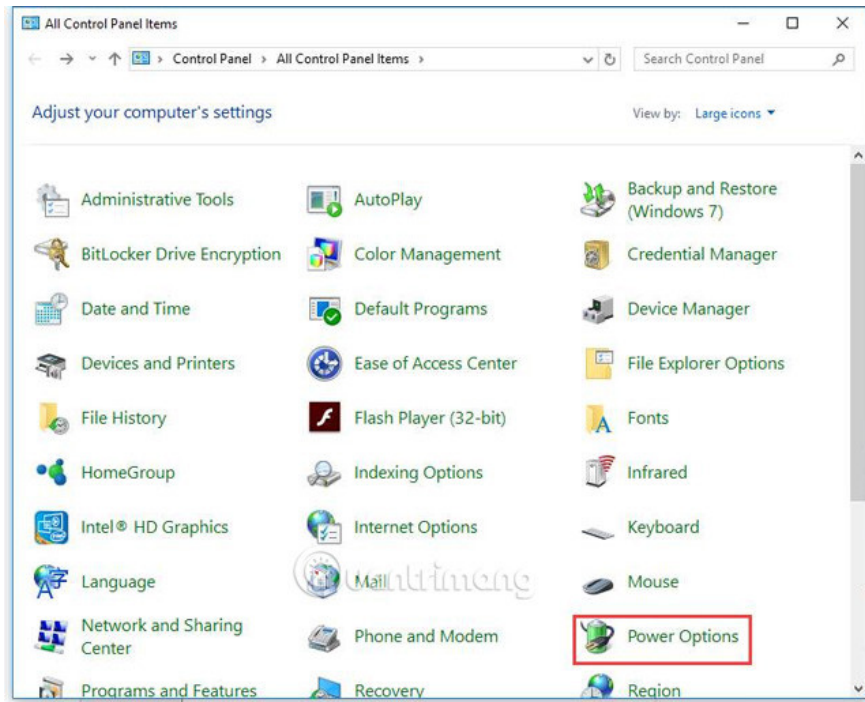
After the computer is turned off, if it cannot be turned on again, it may be caused by the power supply. Try another power supply and see if the problem is fixed.

2. Turn off Fast Startup (Quick start)

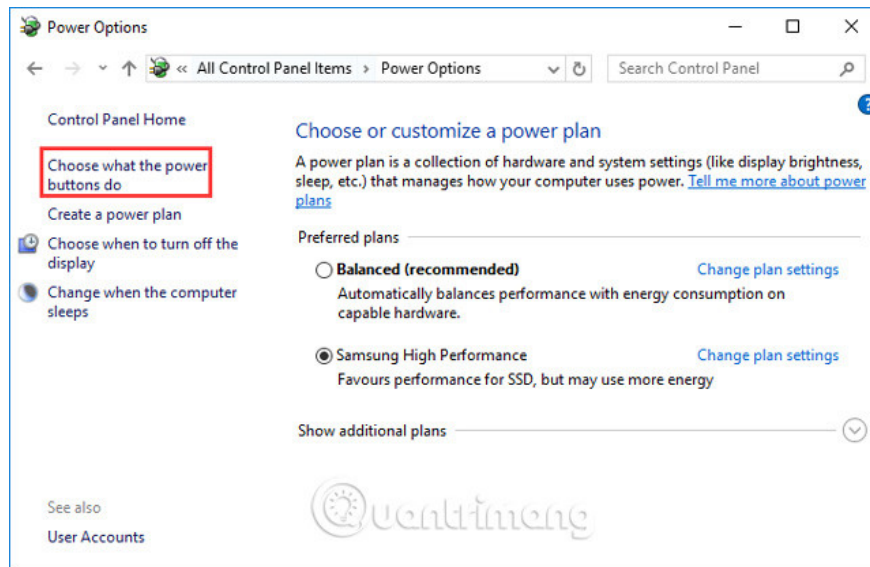
Fast Startup may be the cause of a sudden shutdown of the computer. So check if it is turned on yet. If enabled, turn it off by following these steps:

Step 1 . Open Control Panel.

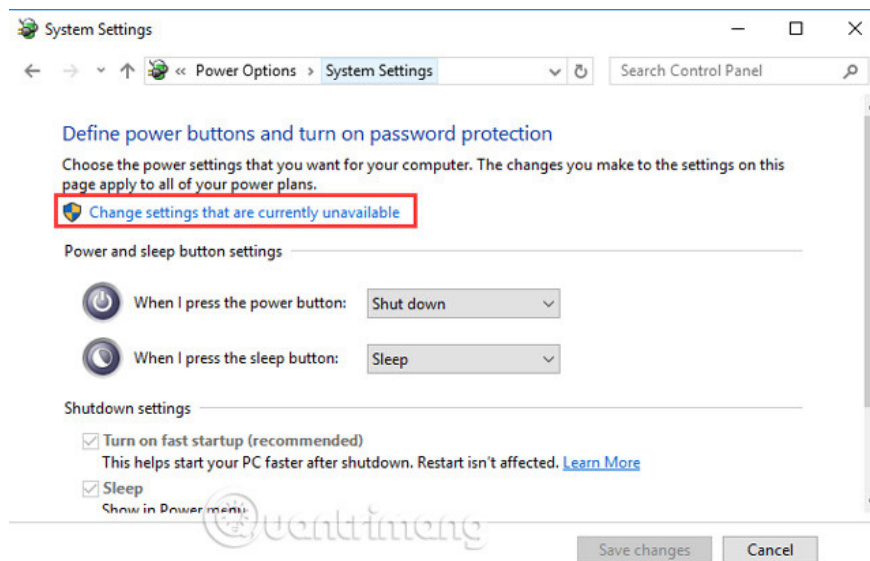
Step 2 . View in **Large icons** mode and click on **Power Options** .



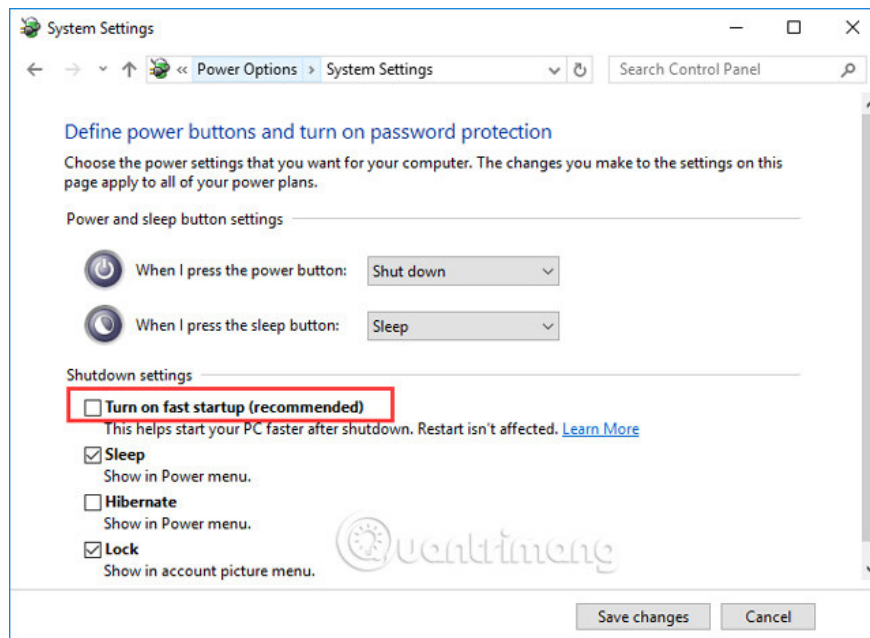
Step 3 . In the left pane, select **Choose what the power buttons do .**



Step 4 . Click **Change settings that are currently unavailable .**



Step 5 . Scroll down to the **Shutdown settings** section. If you see the **Turn on fast startup** option selected, uncheck it and click the **Save changes** button.



See also: Launch Windows 10 "as fast as the wind" with Fast Startup

3. Update the motherboard driver

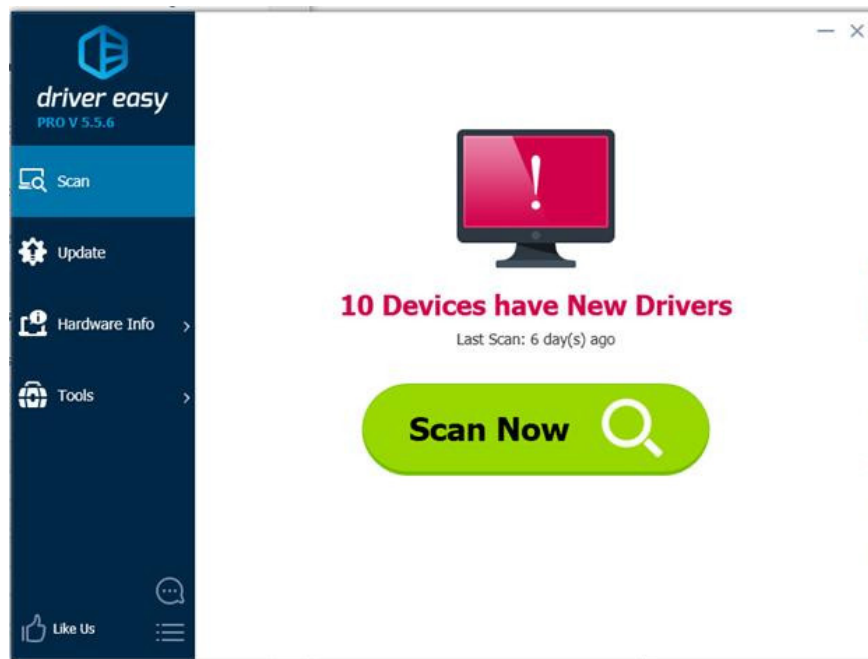
To fix the problem, you can try updating the motherboard driver. There are two ways for you to get the appropriate motherboard driver: perform manual or automatic updates.

Manual driver update : You can update the motherboard driver manually by visiting the manufacturer's website and searching for the most recent appropriate driver. You should make sure to select drivers that are compatible with your version of Windows.

Automatic driver update : If there is no time, computer skills and patience to update the motherboard driver manually, you can perform automatic update using Driver Easy. Driver Easy will automatically identify your system and find the right driver for the motherboard, then download and install it correctly.

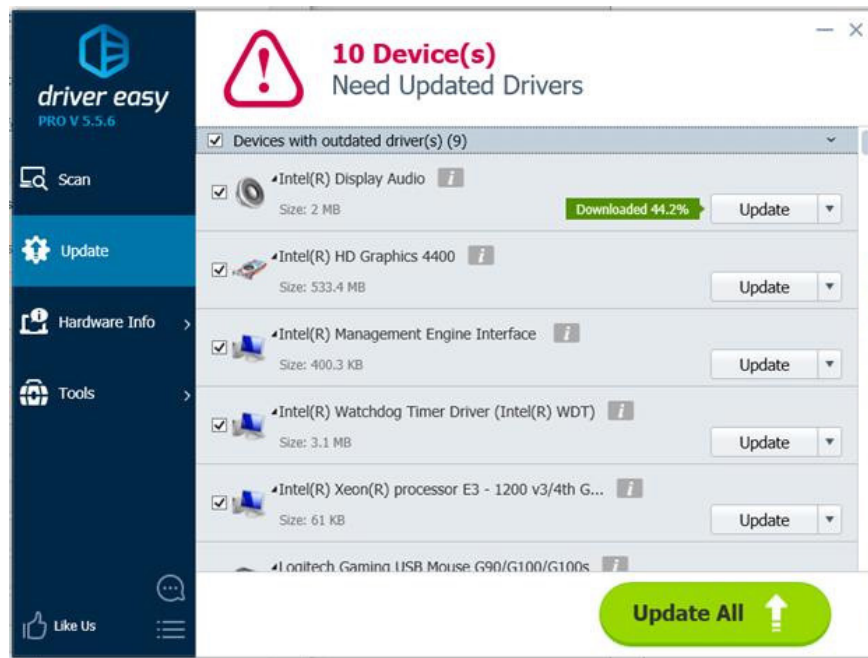
Step 1 : Download and install Driver Easy.

Step 2 : Run Driver Easy and click **Scan Now** button. Driver Easy will scan your computer and detect problematic drivers.



Step 3 . Click the **Update** button next to the device to automatically download and install the correct driver version (you can do this with the free version).

Or click **Update All** to automatically download and install the correct version for all outdated drivers on the system (This requires upgrading to the Pro version with full feature support and a 30% money back guarantee. You will be notified of the upgrade when clicking the **Update All** button.



See also: Terms to know when buying a motherboard

4. Check the system temperature

Most computers today are designed to automatically turn off if any of its components are too hot. Typically, heat-related problems occur when the computer is operating strongly, such as playing intense computer graphics games.

You should check the computer fan to see if it moves quickly and smoothly. If you hear the noise from the fan, it must be over-operated to cool other parts of the computer. Open the computer case to check inside, see components such as processor (heat absorber), video card and computer case fan.

Note: If your problem occurs on a laptop you should not open the device and instead check the fan next to the active computer to see if the heat is blowing out. You should buy a heat sink to help reduce the temperature.

The safe temperature should be 45-50 degrees Celsius and the maximum temperature should not exceed 60 degrees Celsius. You can check the system temperature in the BIOS (Basic input system). But note that not all BIOS will display this information. If you are not sure how to access the BIOS, you can refer to the article How to access the BIOS on different computers or search on Google with the keyword 'brand name + access to the BIOS'. You should follow the steps in the manufacturer's website.

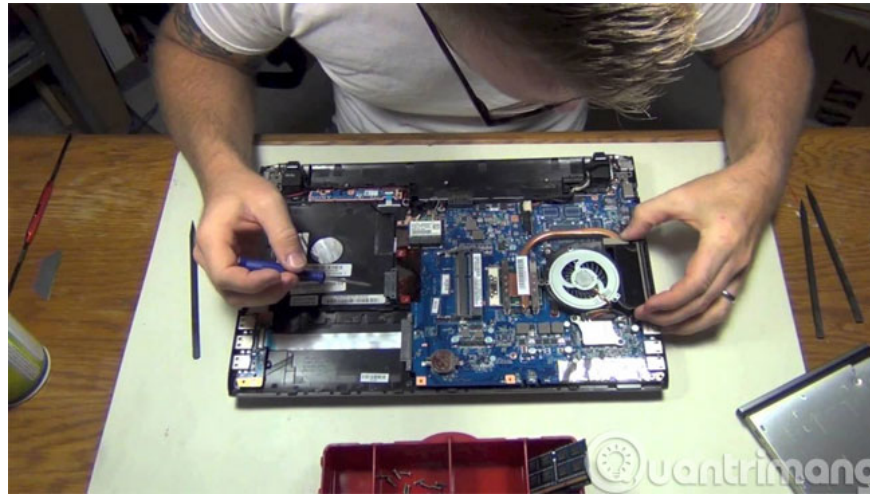
You can also use the free utility to view the system temperature. If you are not sure which utility to use, you can try HWMonitor. It is produced by CPUZ and you can trust.

See also: Instructions for checking the temperature of CPU, VGA, hard drive of computer, laptop

If the temperature is high (above 60 degrees Celsius), you can do two things below.

For desktops (Desktop)

1. Check the back of the machine and remove any parts that seal the blower.
2. Open the lid of the body (case) and check the situation of the internal cables that are sealing the air slots of the machine.
3. Blow out the dirt inside with a specialized blower for your computer.
4. Last check by turning on the computer while still opening the body (case) and making sure the fans are still working properly. If the fan stops working, the temperature will be higher than normal. So, open the computer case and make sure the fan is running, if the fan fails, replace it.



For laptops (Laptop)

1. Re-check the location of the laptop: Never leave a pillow or blanket because they will block the air slots of the machine.
2. Consider adding a heat sink to your laptop to enhance airflow and cooling for the base. However, if you want to save, the idea of using a hard cover will also help significantly with laptop cooling.
3. Too much dust can cause the computer to overheat. Therefore, clean the computer, especially the fan, filter, and open slots of the base. But you should avoid taboo when doing this

In case you want to clean the machine more thoroughly but not "brave" enough to open the machine, please bring it to the service center for technical experts to clean up the details inside.

5. Update the BIOS

You can download and install the new BIOS utility from the PC manufacturer's website. The steps to update BIOS are very complicated. You can get detailed steps on the manufacturer's website or refer to the BIOS Upgrade Instructions article.

Incorrect BIOS update may prevent your computer from booting. If you are not knowledgeable about computers, you should bring it to a repair shop.

I wish you all success!

See more:

1. Trick to speed up the process of shutting down the computer, shutting down quickly on Windows

2. How to fix Windows 10 without turning off the power completely
3. All Frequency Restart, Shutdown, Remote Off . with Command Prompt
4. 8 steps to fix charging laptop not to power
5. Instructions on how to clean the laptop keyboard yourself
6. Fix A disk read error occurred on Windows

You finished reading the article "**The simple way to fix computer errors is suddenly turned off**" edited by the [TipsMake](#) team. We hope this article has provided you with many useful tech tips and tricks. You can search for similar articles on tips and guides. Thank you for reading and for following us regularly.
