

The most detailed way to format borders for Excel tables

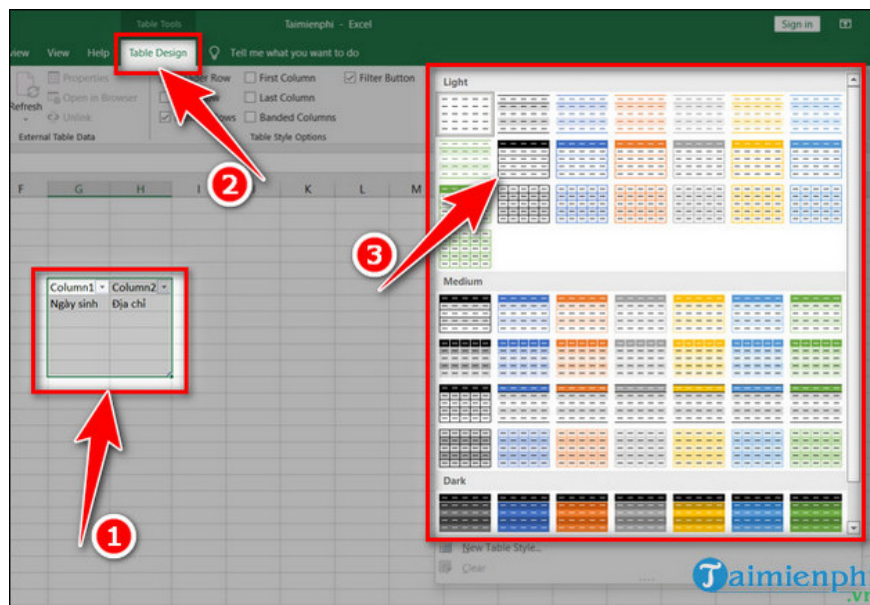
Inserting tables in Excel is extremely familiar to anyone who works with office tools. We can arbitrarily design the interface and make the table more prominent in the content by formatting the border for the Excel table. So do you know how to format table borders on Excel application?

Instructions for formatting borders for Excel tables

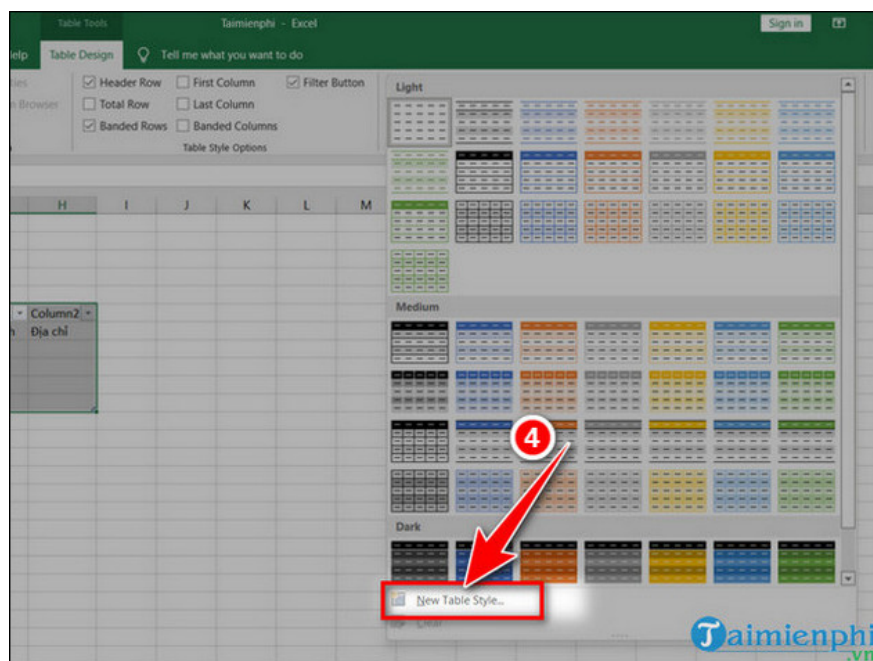
2. Detailed instructions

Step 1 : Open **Excel** on your computer, select **the table** you want to format.

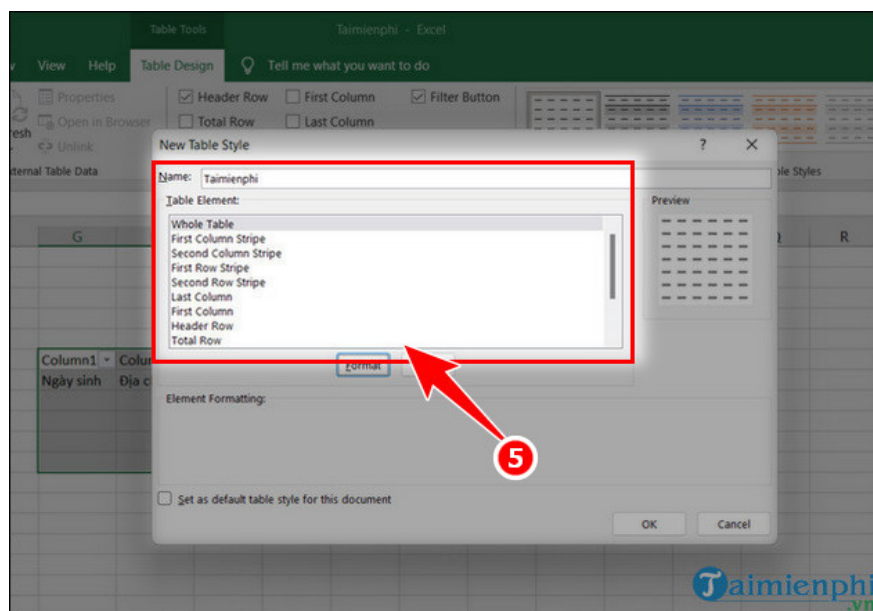
Step 2 : At **Design**, select **Table Style** => click **the format style** you want to apply.



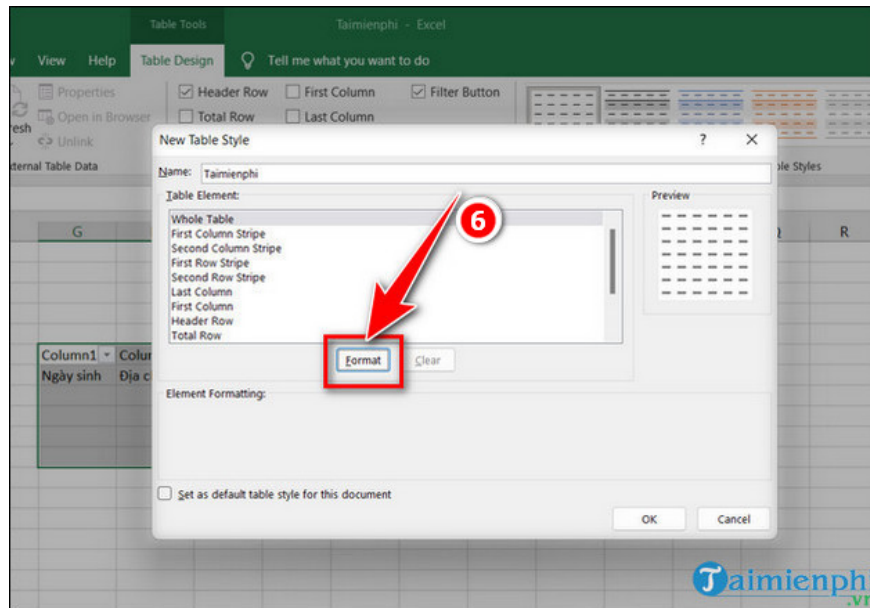
- If you do not want to choose the available formatting templates, you can create your own formatting style by pressing **New Table Style** .



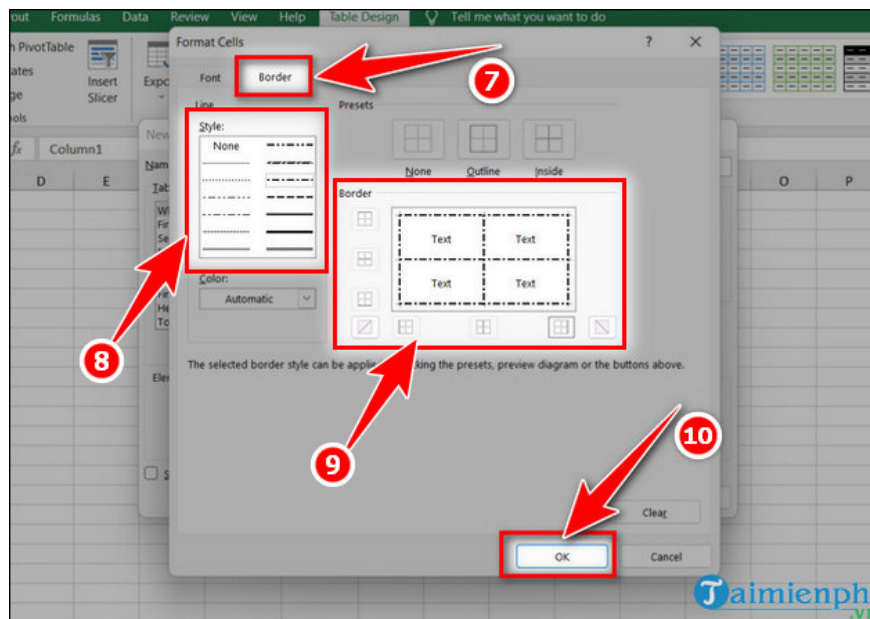
- **New Table Style** dialog box appears , enter
- + **Name** : Name the table format.
- + **Table Element** : Select display elements.



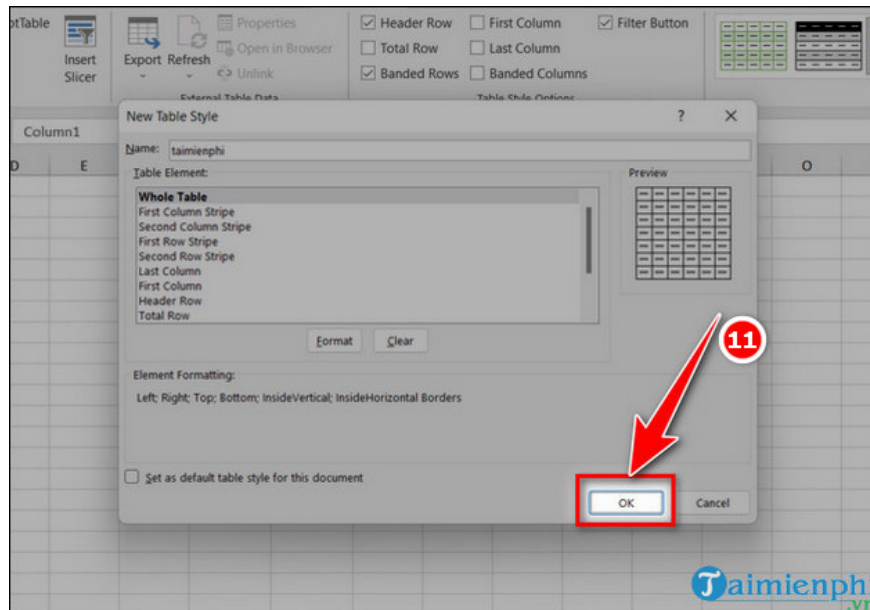
- Then click **Format** to select formats for the table.



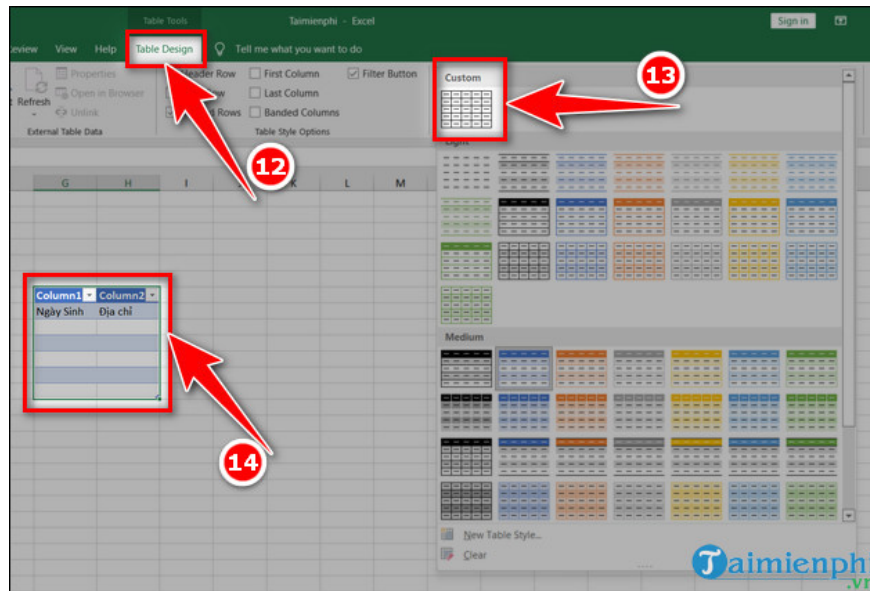
- Click **Border** , select border format at **Style** and **Border** editing => click **OK** .



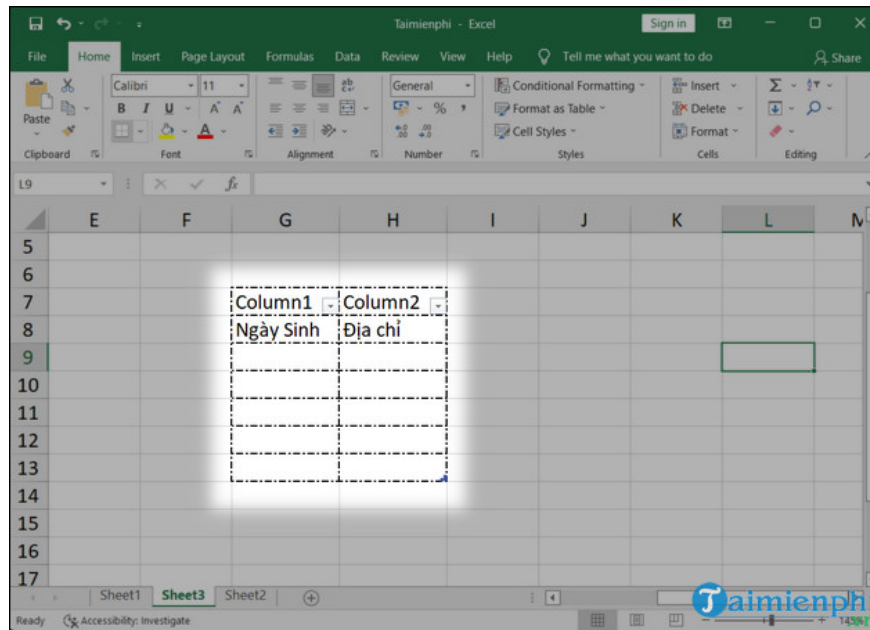
- The **New Table Style** panel appears, click **OK** to save.



- Select **the table** , go to **Table Design** and click to **format** the newly created table.



- The results are as illustrated below.



Formatting borders for Excel tables is quite simple and easy to do, right? In case you edit documents on Word and want to create professional borders, please refer to **creating borders** here.

You finished reading the article "**The most detailed way to format borders for Excel tables**" edited by the [TipsMake](#) team. We hope this article has provided you with many useful tech tips and tricks. You can search for similar articles on tips and guides. Thank you for reading and for following us regularly.