

The most detailed instructions for installing Windows 10 and 11 using WinNTSetup

Have you ever installed Windows using WinNTSetup? If not, please follow how to install Windows 10 and 11 using WinNTSetup through the following tutorial.

Installing Windows 10 and 11 using WinNTSetup is a method that has many outstanding advantages such as fast speed and the ability to easily customize the Windows installer. In this article, we will learn how to install Windows 10 and 11 using WinNTSetup in detail with specific steps.



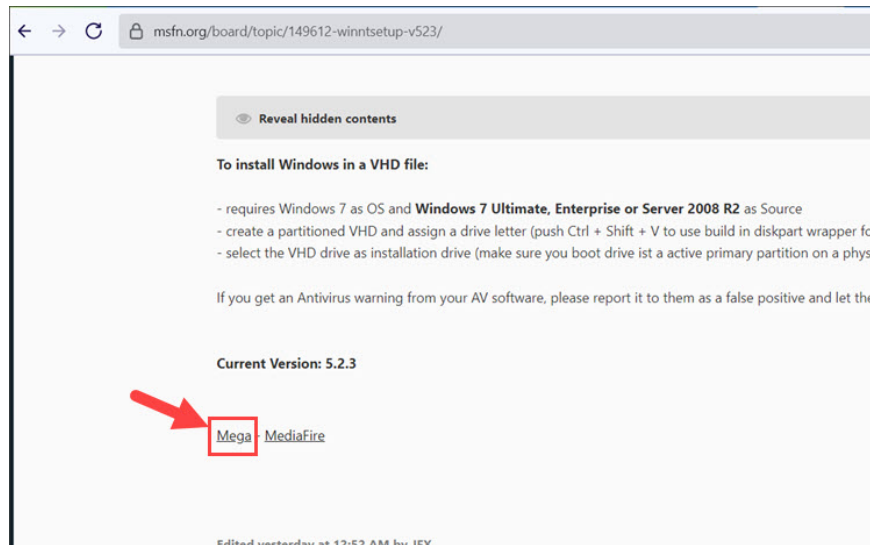
1. Prepare

- **Windows 10/11 installation file** : Search for the Windows installation file in ISO format online. Please refer to the article **Top 5 ways to download Windows 10 ISO file for free** to find out how to download Windows 10 ISO file.

After downloading the ISO file, copy the ISO file to another drive/folder that does not have Windows installed, such as drive D or drive E.

- **WinNTSetup** : You can download WinNTSetup shared by member JFX on the MSFN forum at <https://msfn.org/board/topic/149612-winntsetup-v523/>

Next, scroll down and click on the Mega or MediaFire link to download.



After downloading, unzip the WinNTSetup folder along with the folder containing the Windows ISO file for easy searching.

- **USB Boot Windows PE** : There are many USB Boot versions online such as Anhdv Boot or NHV Boot. Please search for these USB Boot versions and find a way to install them on USB.

In the article, TipsMake uses the Anhdv Boot tool, you can download and see installation instructions at the homepage: <https://anhdvboot.com/tai-ve/>

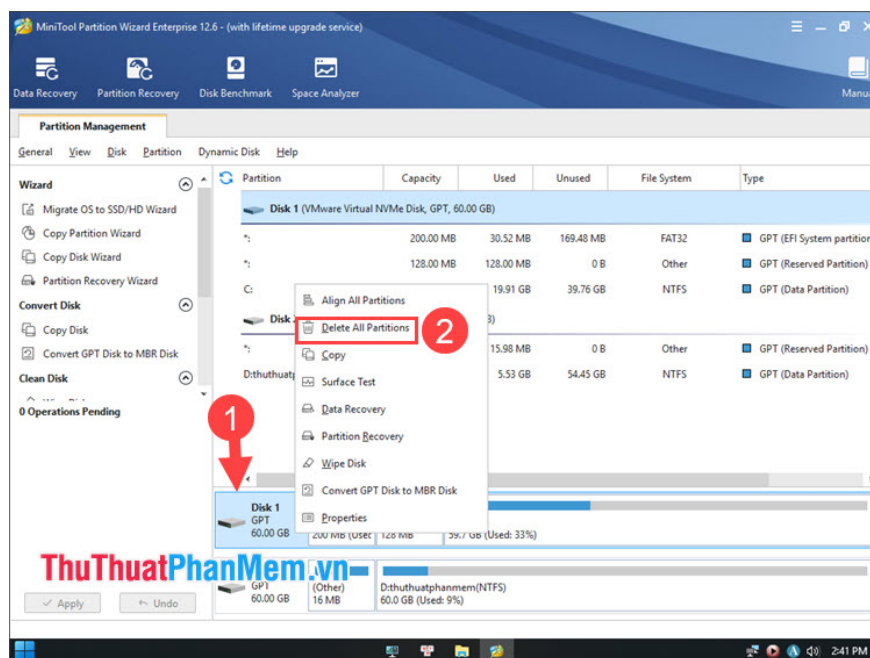
2. Partition the hard drive to install Windows with MiniTool Partition Wizard

2.1. Delete partition on hard drive

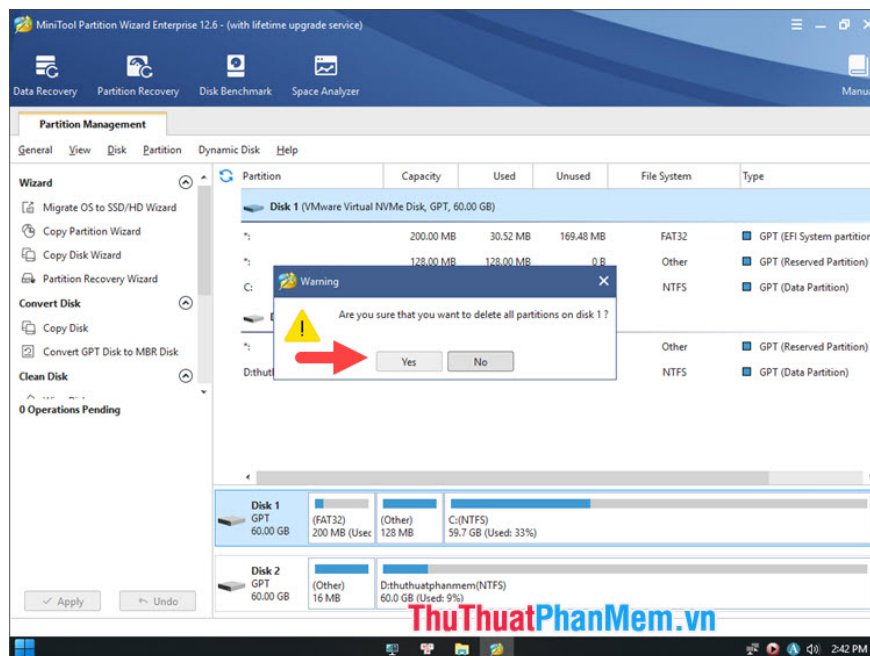
Step 1 : On the main interface of Anhdv Boot, open the **Partition Wizard 12** software .



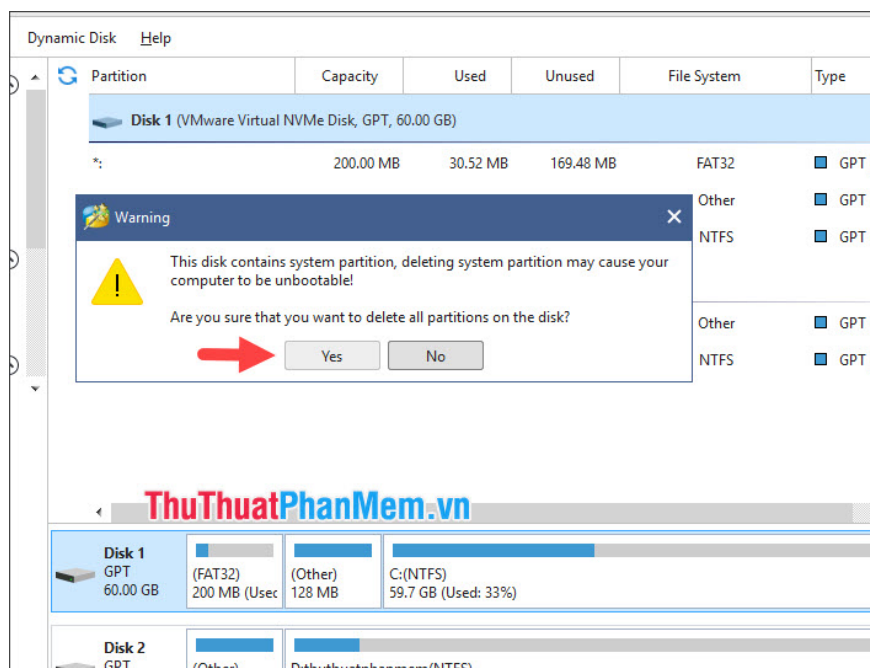
Step 2 : Right-click on the drive where Windows needs to be installed (1) => **Delete All Partitions** (2) to delete the entire partition.



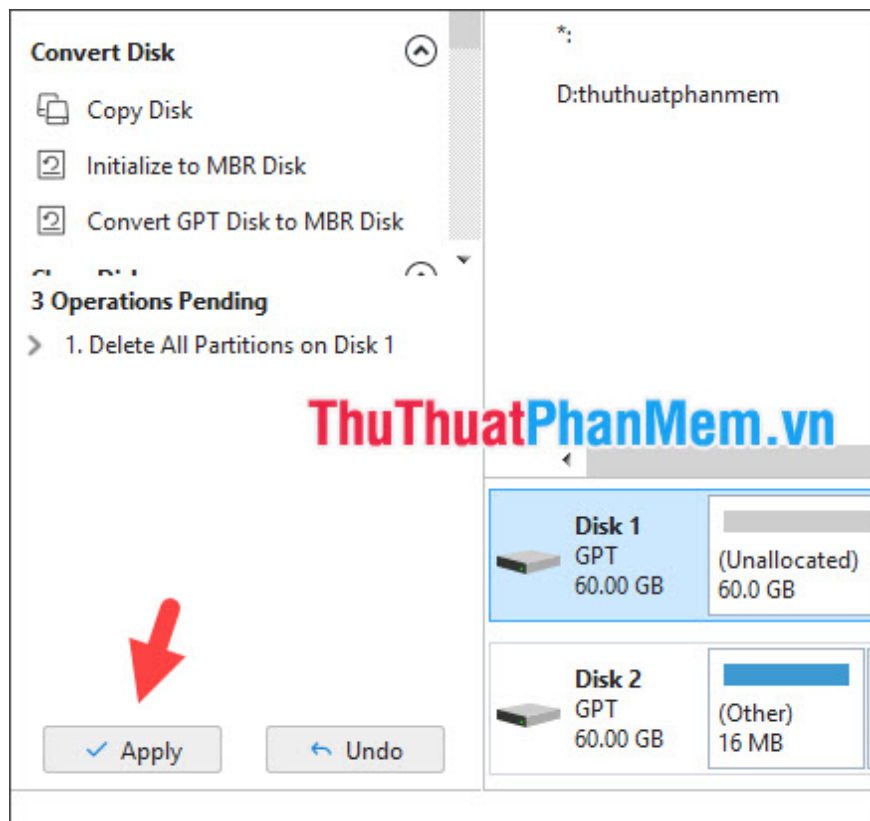
Next, click **Yes** to agree to delete the entire partition.



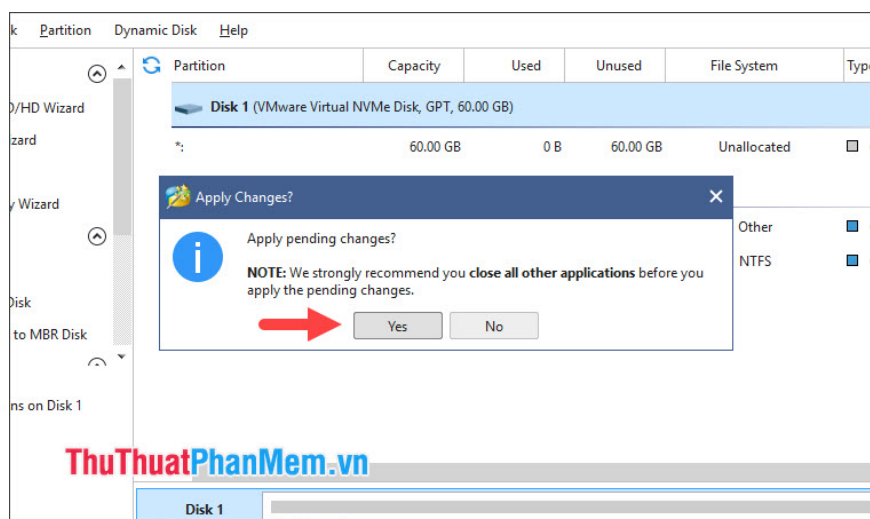
Continue to click **Yes** on the warning that appears on the screen to continue.



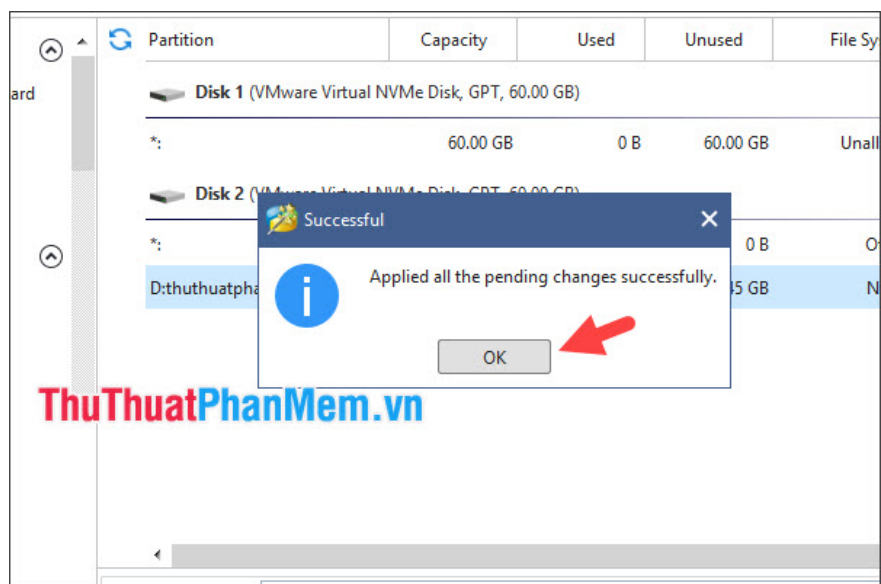
Step 3 : Click **Apply** on the left side of the software to apply the changes to the partition.



Click **Yes** to continue.

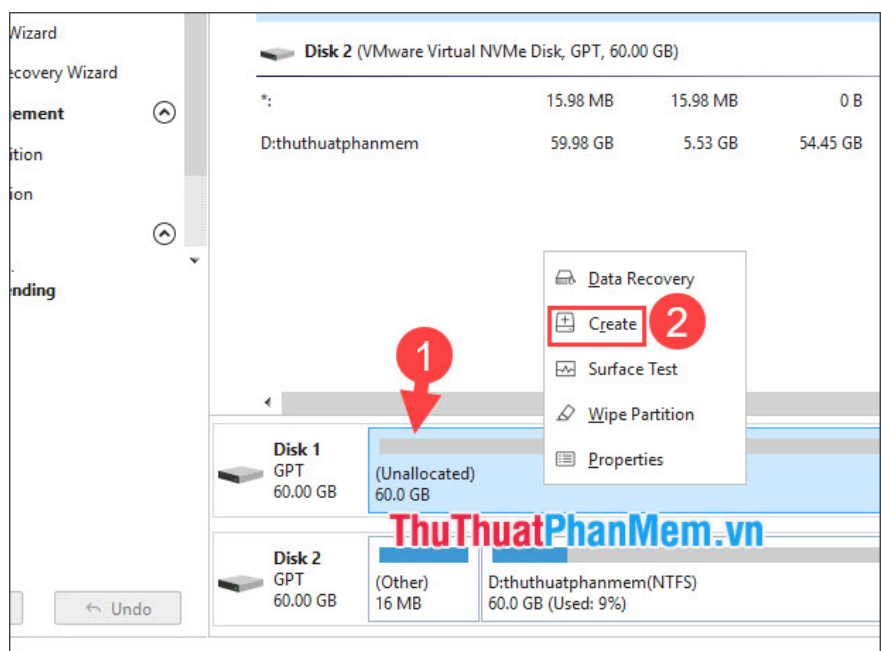


After successfully deleting the partition, click **OK** to exit the dialog box.



2.2. Create EFI partition and Windows installation partition

Step 1 : Right-click on the newly deleted partition (Unallocated) (1) => **Create (2)** .



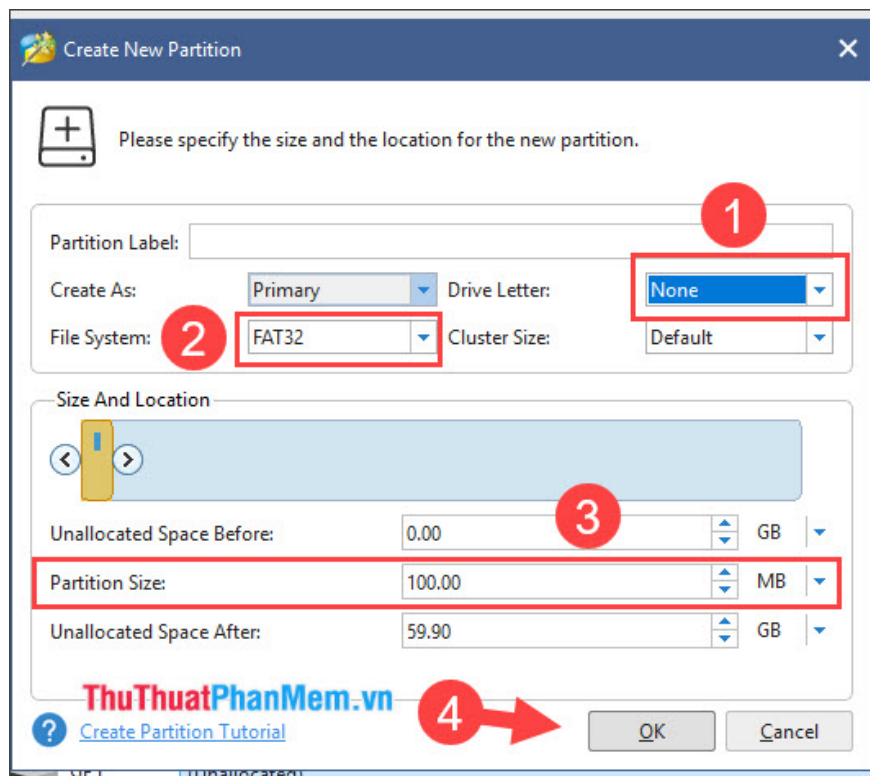
Step 2 : You set the parameters like the image below.

+ **Drive Letter** => **None (1)** .

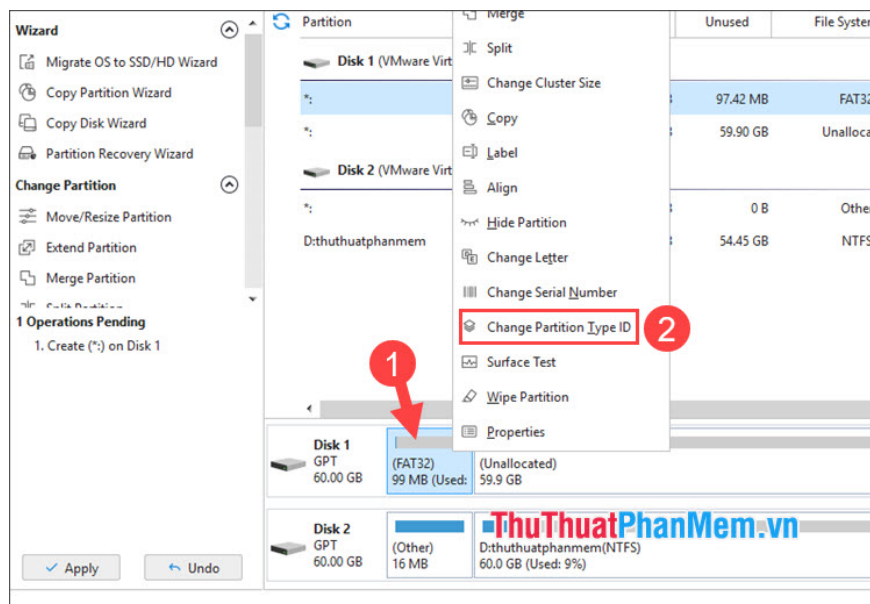
+ **File System** => **FAT32 (2)** .

+ **Partition Size** => **100 - 105MB (3)** .

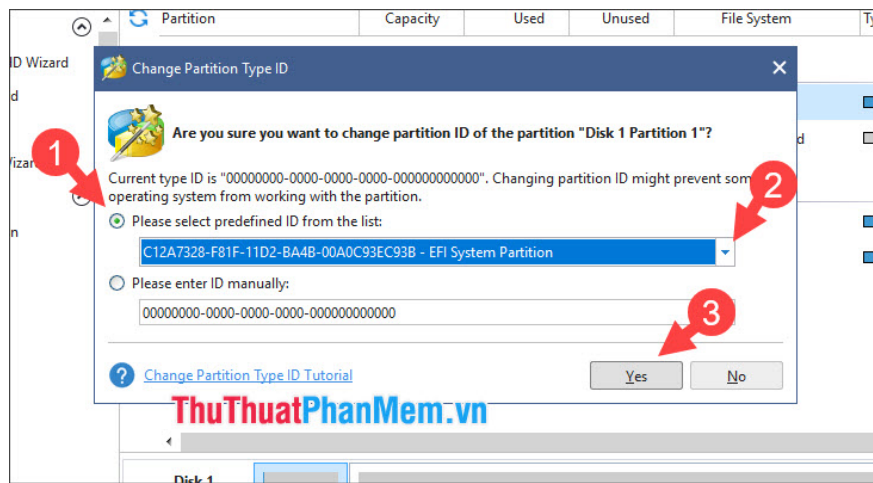
Click **OK (4)** to create the partition.



Step 3 : Right-click on the newly created partition (1) => **Change Partition Type ID (2)** .

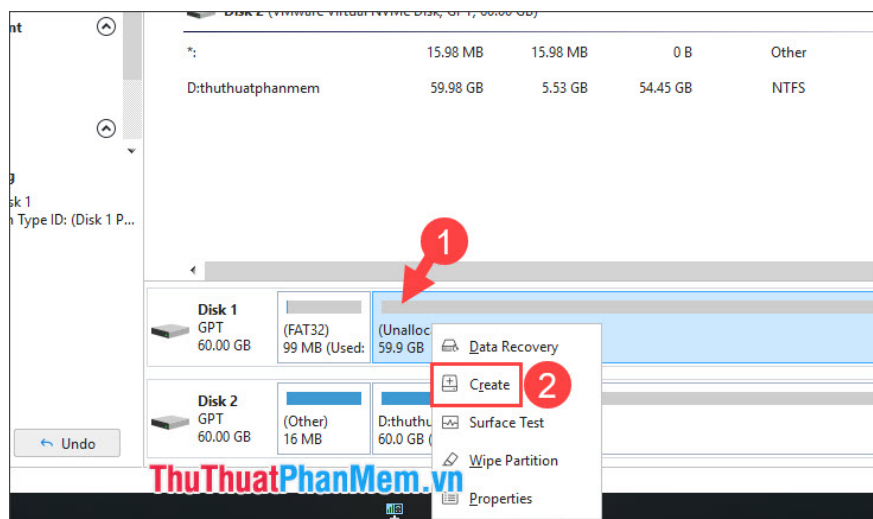


Step 4 : Click on **Please predefined ID from the list: (1)** => select **EFI System Partition (2)** => **Yes (3)** .

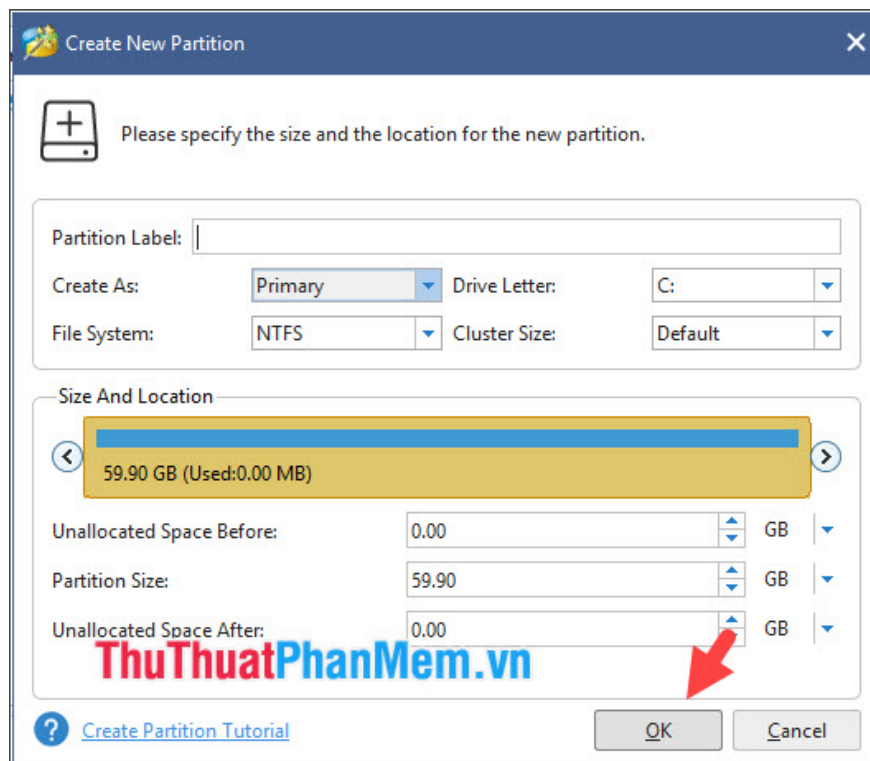


2.3. Create a partition containing Windows

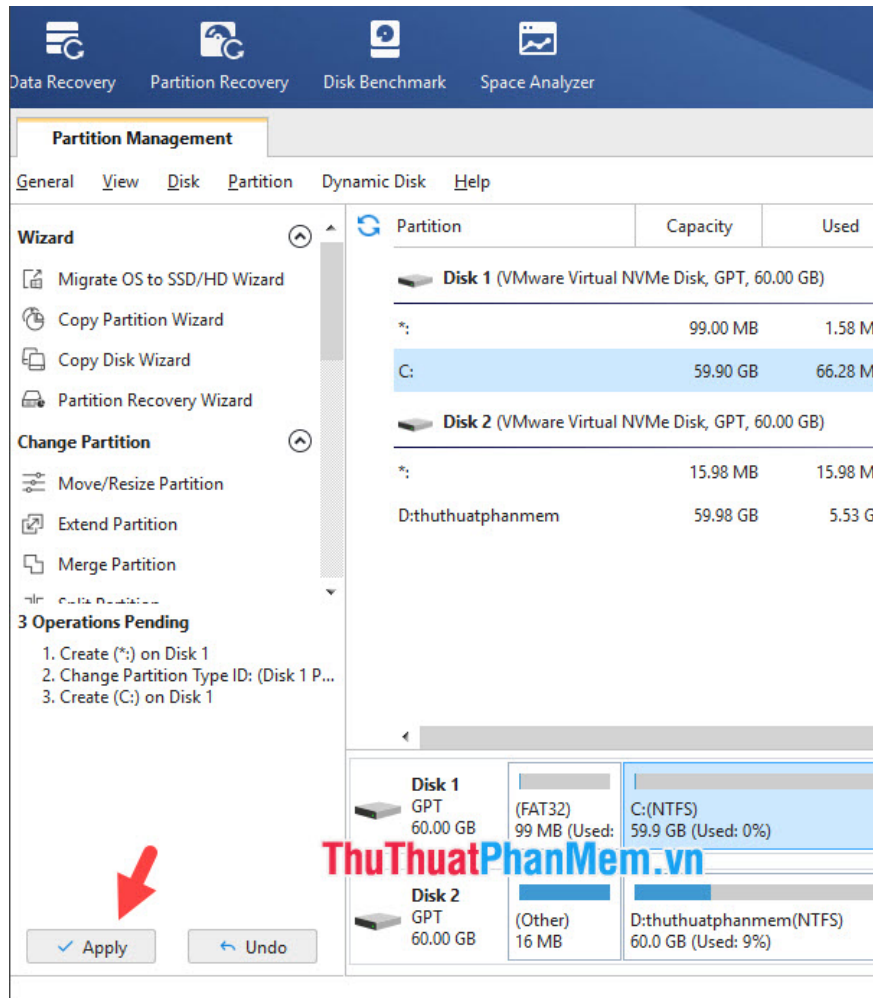
Step 1 : Right-click on the Unallocated partition (1) => **Create** (2) .



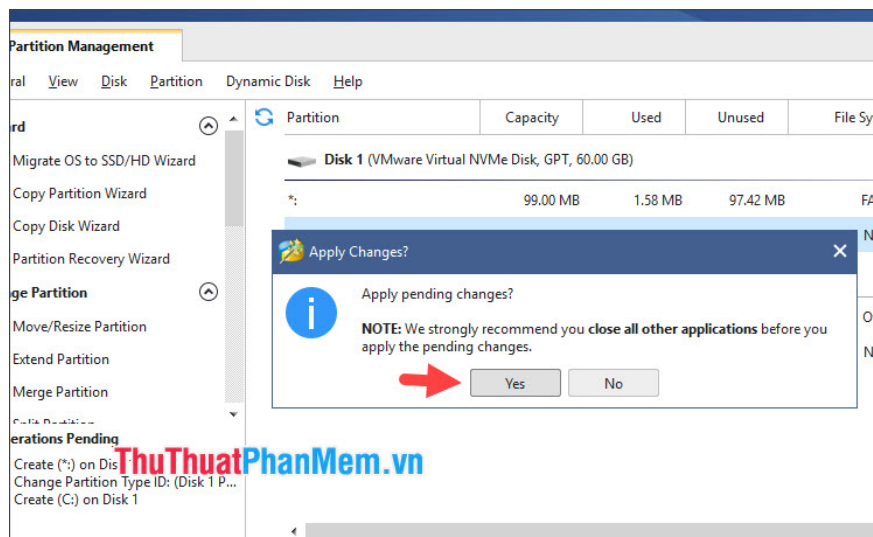
Step 2 : Leave the default parameters => click **OK** .



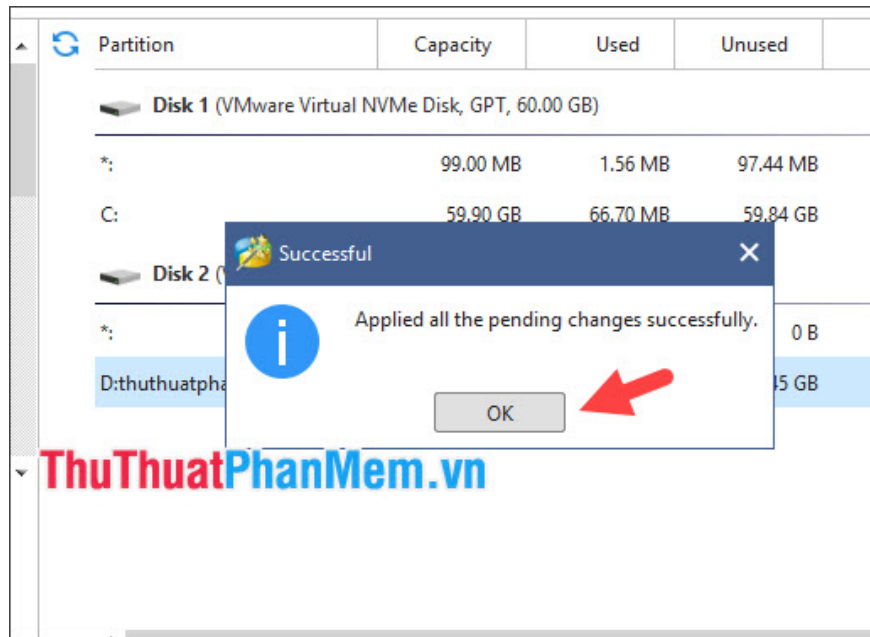
Step 3 : Click **Apply** on the left side of the software to apply the changes.



Click **Yes** to agree with the warning displayed on the screen.

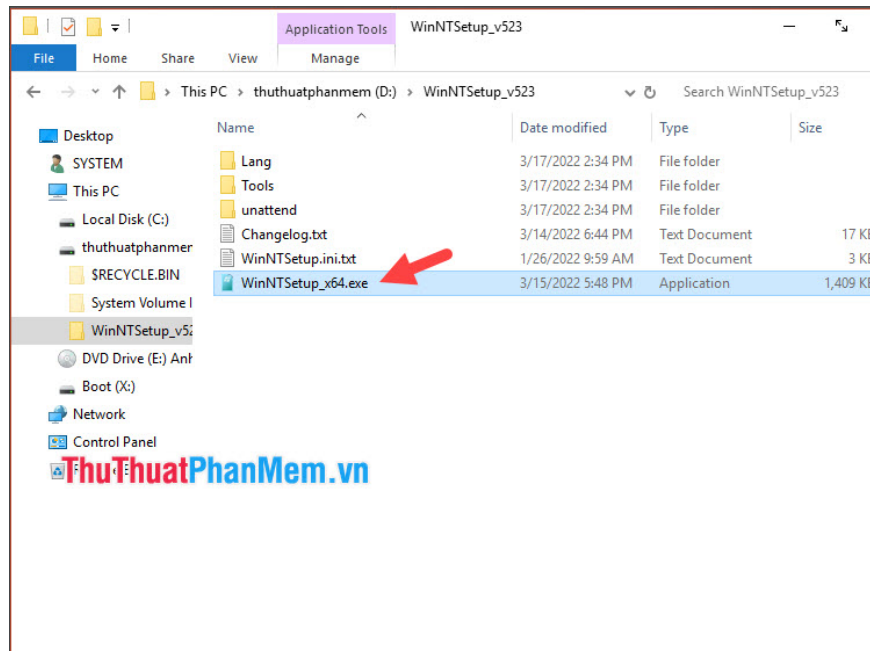


After partitioning is complete, click **OK** to ignore this message.

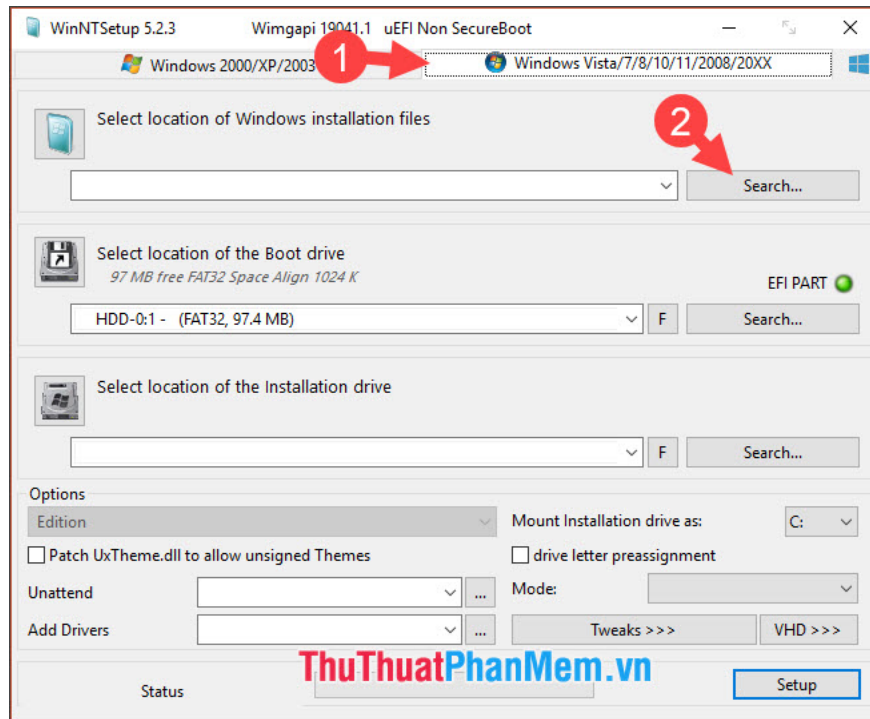


3. Install Windows using WinNTSetup

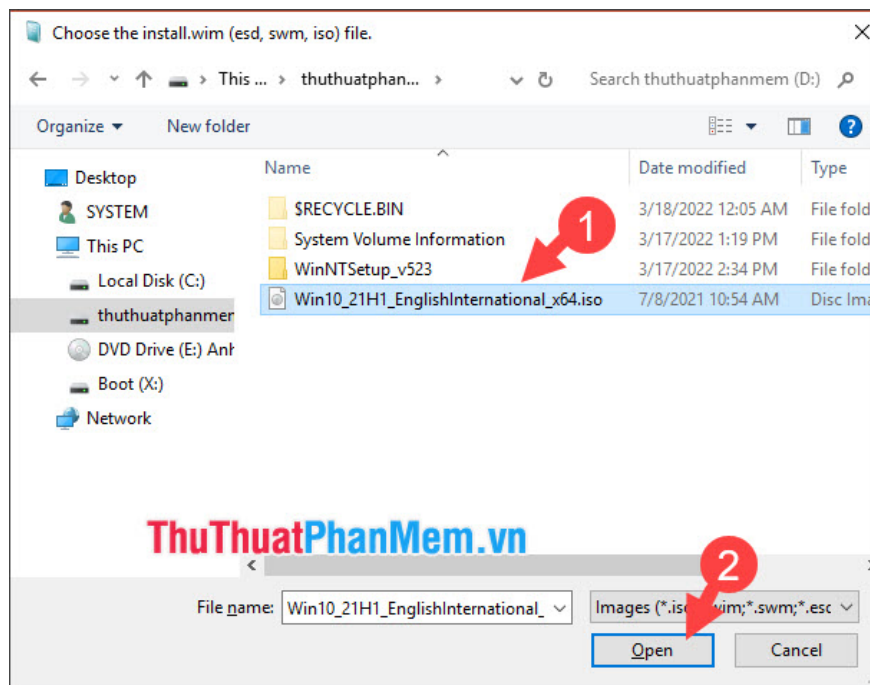
Step 1 : Open the **WinNTSetup** folder and launch the **WinNTSetup_x64.exe** file downloaded and extracted in part 1.



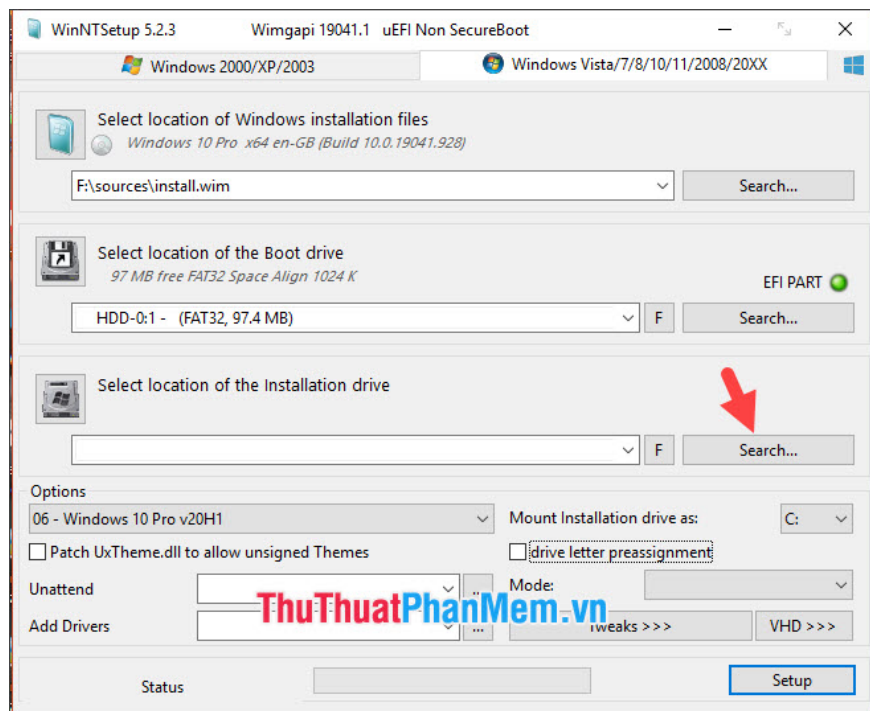
Step 2 : Click on the **Windows Vista/7/8/10 tab (1) => Search (2)** in the first section.



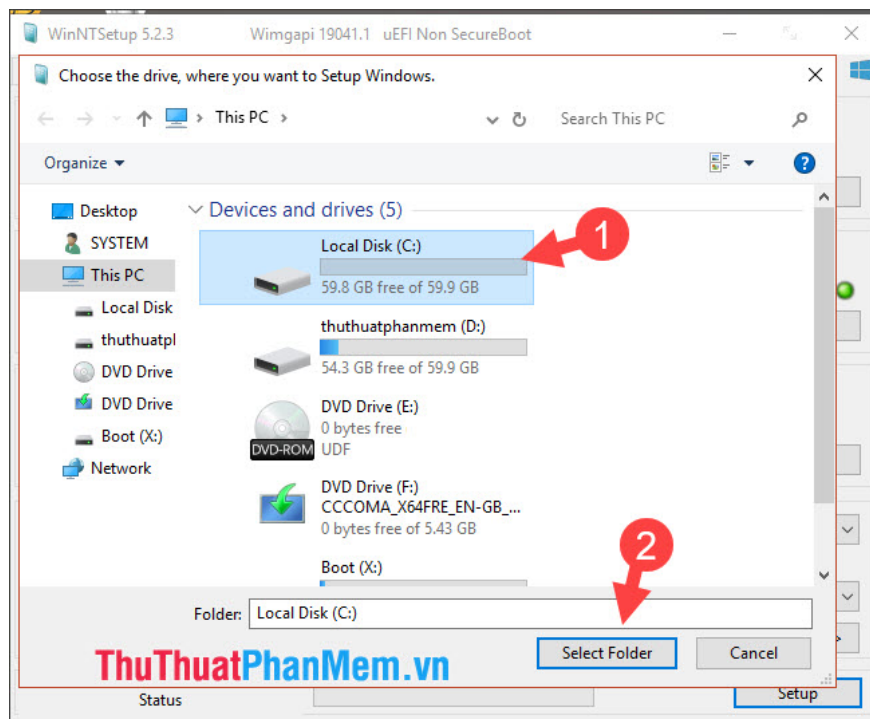
Step 3 : Open the path to the ISO file (1) downloaded in part 1 => **Open (2)** .



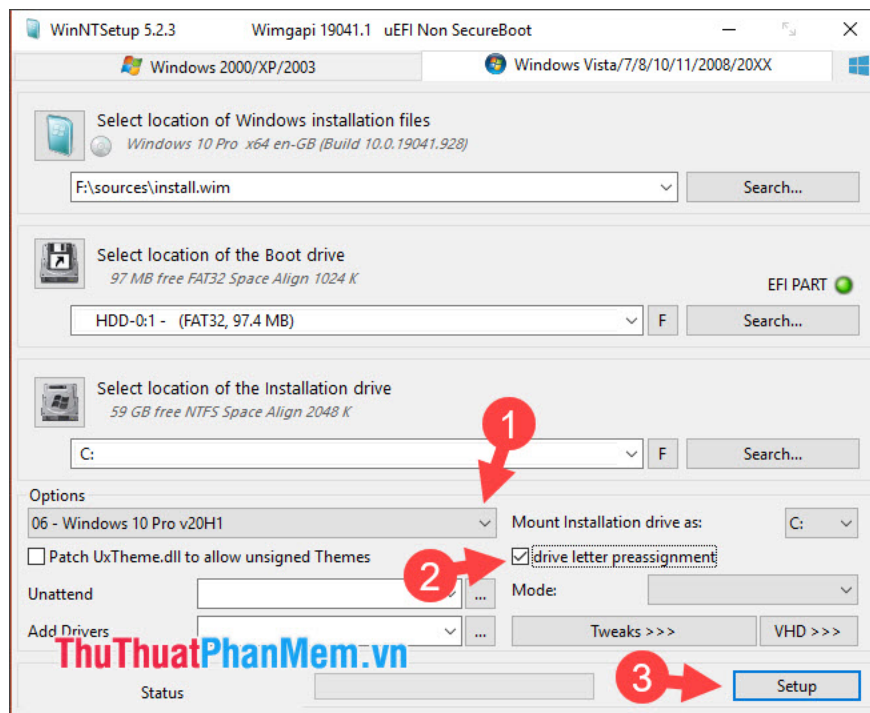
Step 4 : In the **Select location of the installation** section , click **Search**.



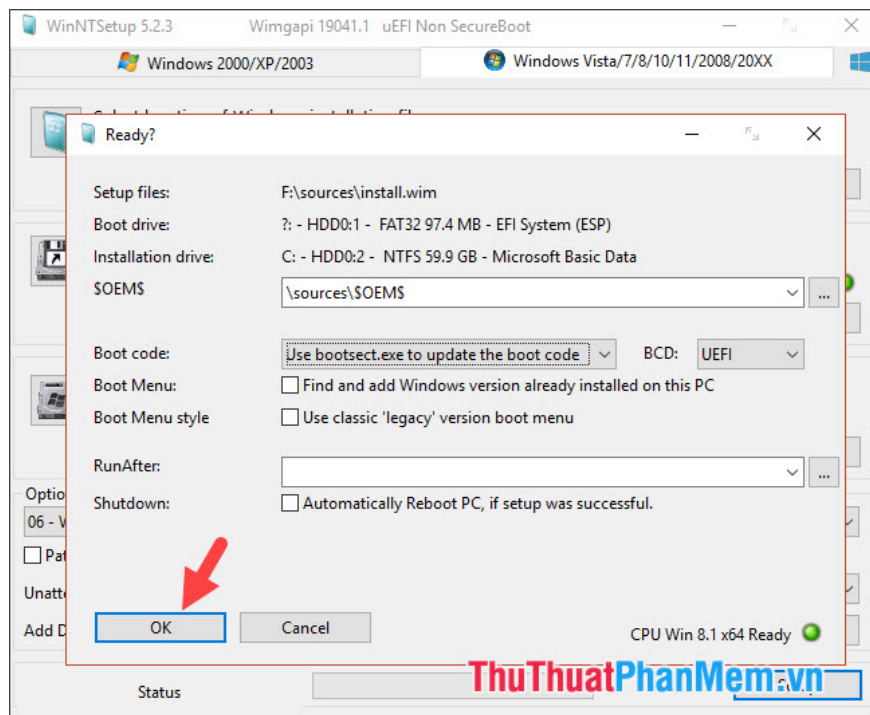
Next, select the Windows installation drive (1) => **Select Folder (2)** .



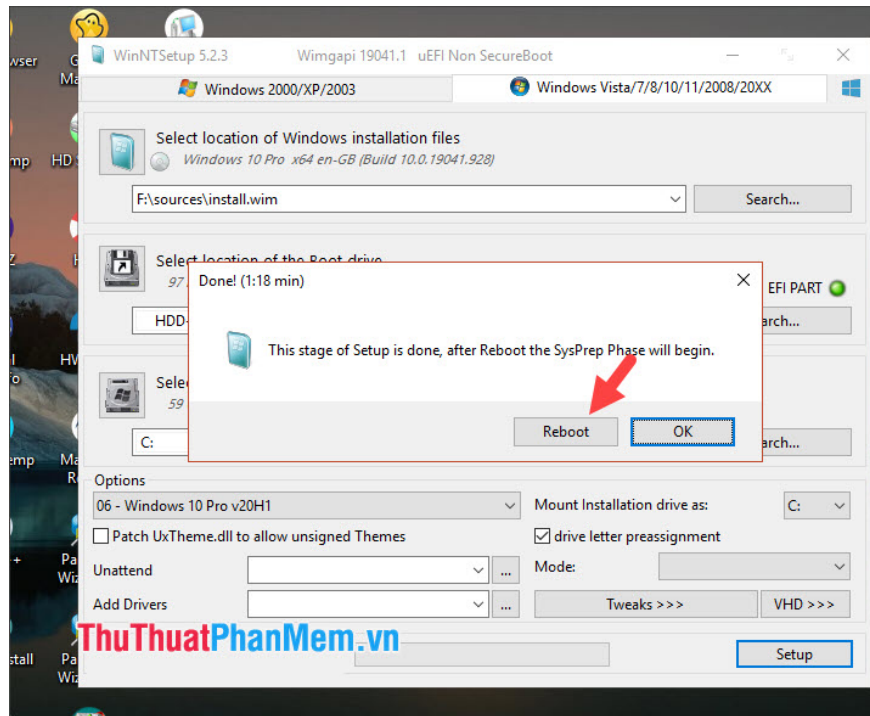
Step 5 : In the **Options** section , select the Windows version according to your needs such as Home/Pro/Education. (1) => select **drive letter preassignment** (2) => **Setup** (3) .



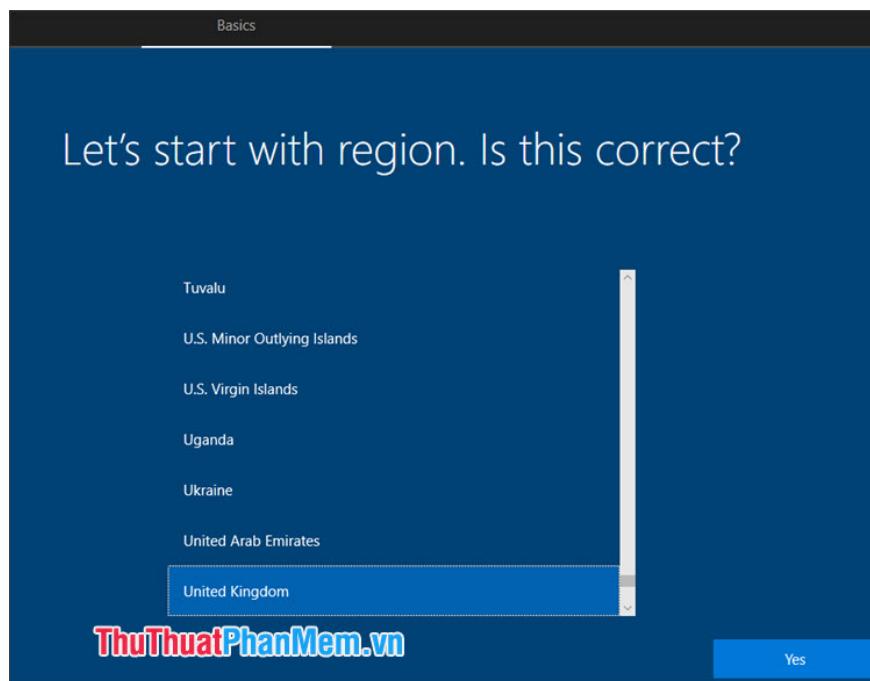
A new dialog box appears, click **OK** to continue.



Step 6 : After successful installation, click **Reboot** to restart the computer.



Step 7 : After restarting the computer and the Windows setup screen appears, it is successful. You follow the normal Windows installation steps to complete.



With the instructions in the article, you can easily install Windows 10/11 with WinNTSetup quickly. Good luck!

You finished reading the article "**The most detailed instructions for installing Windows 10 and 11 using WinNTSetup**" edited by the [TipsMake](#) team. We hope this article has provided you with many useful tech tips and tricks. You can search for similar articles on tips and guides. Thank you for reading and for following us regularly.

