

The most convenient way to connect a game controller to your computer

GamePad brings a more realistic feeling and exciting experience. Instructions on how to connect a game controller to a computer simply, easily and completely

For gamers of action games such as fighting, adventure, sports, action, . the gaming experience is always prioritized and with game pads will bring better effects than using keyboard and mouse. But not everyone knows what a game controller is and how to use it. Let's learn **how to connect a game controller to a computer** through the following article.

1. Benefits of using a game controller on PC

Choosing a **game controller** is always the preference of most gamers because with a gamepad, gamers can play games in any comfortable, convenient and easy position. No longer having to sit on the PC for hours, straining your eyes straight at the screen while playing games will help to make gamers more comfortable and not increase fatigue.

For many game genres such as football or racing, the benefits of a game controller can be clearly seen. Compared to a normal gaming computer keyboard, the difference is clear. Just with a normal computer you often play games with a game controller, you can create an extremely attractive entertainment space right in your apartment.

Experiencing the Trigger button on **the Xbox One** or PlayStation 4 controller in racing games brings the experience of gently releasing the throttle or suddenly accelerating at different speeds, a feeling that any player looks forward to.

Playing games without fatigue or hand pain for many hours are the basic benefits that gamepads bring. Carefully calculated from mass to size to grip feeling, finger placement to be natural for players to enjoy the most comfortable gaming feeling.

2. Ways to connect game controller to computer

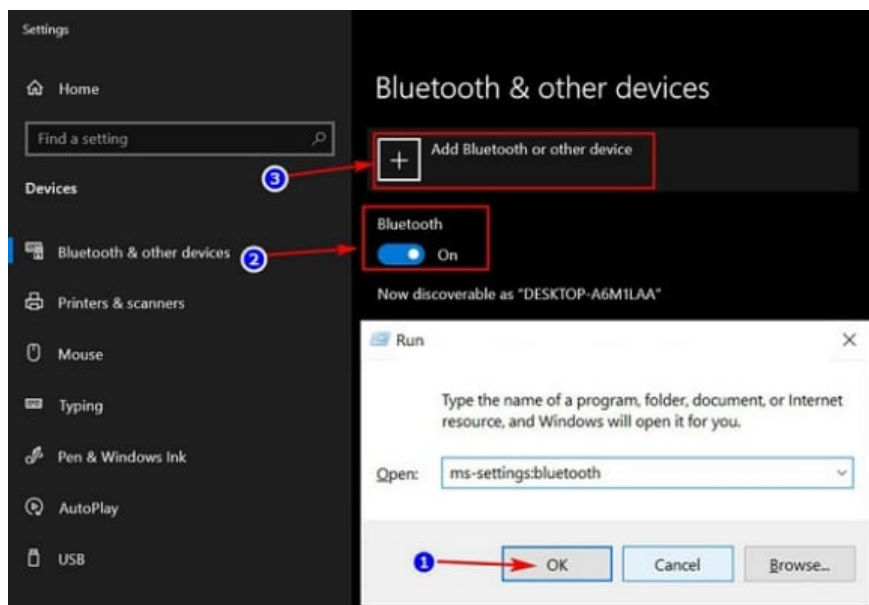
Method 1: How to connect a game controller to a Windows 10 computer using Bluetooth

Both PS4, PS5 and Xbox One S controllers support Bluetooth connectivity to PCs, but the PS4 and PS5 controllers are more compatible because they support both Bluetooth 2.0 and 4.0 while the Xbox One S only supports Bluetooth 4.0 and above.

Most laptops today have built-in Bluetooth, but PC cases often do not have it or only have it on certain models. Therefore, it is necessary to integrate a USB Bluetooth transmitter to use it.

Step 1: Access the Bluetooth management section on Windows 10, press the Windows + I key combination to open Windows Settings, then select Devices -> select the Bluetooth tab to enable the connection.

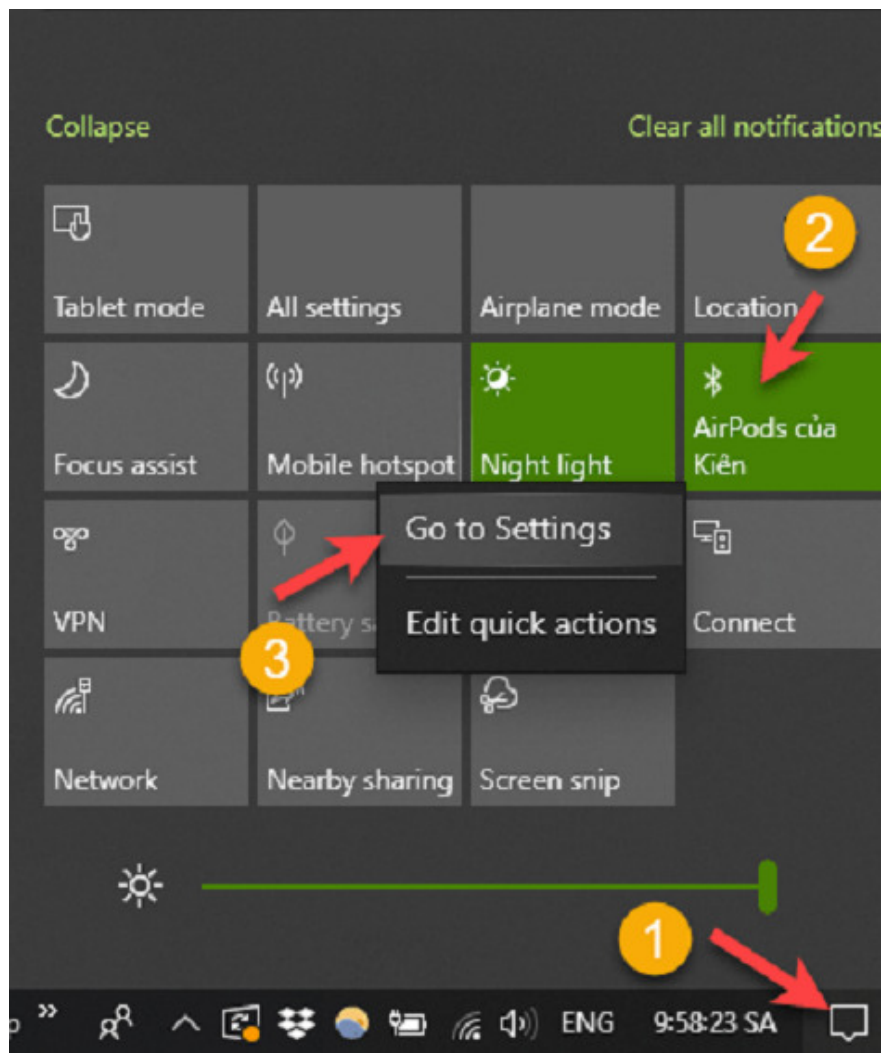
Make sure that the Bluetooth status of the device is switched from OFF to ON. Select click on Add Bluetooth or other device to connect to the new Bluetooth device.



How to connect game controller to computer using Bluetooth

In addition, you can refer to some other ways to access Bluetooth on Windows 10 such as:

1. Method 1: Access Bluetooth settings in Windows Settings by: opening the Run dialog box (Windows + R) -> enter the command 'm-settings:bluetooth' or 'ms-settings:connecteddevices' and press Enter to complete.
2. Method 2: Open the Notifications window on Windows 10 (windows + A) -> right-click and select Bluetooth -> select Go To Settings on Windows 10.

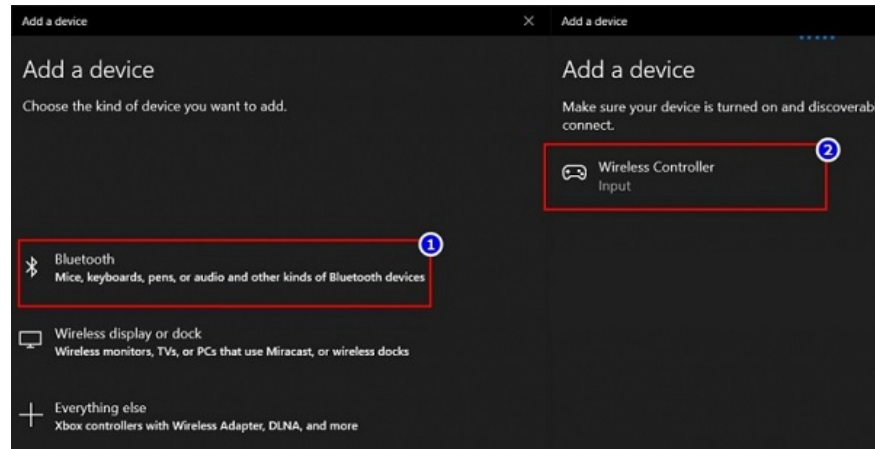


Step 2: When the Add a device window appears with options to add a device. Press and hold both the Playstation logo button and the Share button on the game controller for about 5-7 seconds to activate Bluetooth mode, then select the connected device on the computer.

-> When the LED strip in front of the controller flashes continuously, the gamepad is showing that it is ready to connect.



When the device waiting for connection is displayed named Wireless Controller - Input, which is the name of the PS4 gamepad, click to select and let the connection process complete. In addition, some types of Gamepad may require a pin code to connect, enter 0000 and select OK.



Step 3: When the LED strip on the front of the game controller is steady, and a connection completion message appears on the computer screen, the Bluetooth connection process between the computer and the game controller is complete.

Method 2: How to connect a game controller to a Windows 10 computer using a USB cable

Connecting a game controller to a computer using a USB cable was still the most popular connection method before the advent of wireless connection technologies like Bluetooth.

Connecting the controller to a Windows 10 computer using a USB cable is quite simple and easy to do. Plug the included USB cable into the PC, Laptop, and plug the remaining MicroUSB end into the Micro USB port on the game controller and you're done.

DualShock, Dualsense are wireless controllers, so there will be no connecting wire included whether it is the international version or the Vietnamese market.



How to connect the game controller to the computer is complete but you also need to wait for Windows 10 to install the driver for the game controller before you can use it. When connecting by wire, the LED strip on the front of the controller will still light up to indicate that it is connected, but the light will flash continuously. This is a sign that the game controller is not fully charged and the PS4 GamePad will only light up steadily blue when fully charged.

While charging the GamePad, we can still use the controller normally, with the advantage of having a much more stable connection than using a Bluetooth connection.

In addition, because the standard Micro USB charging port is fully compatible with the PS4 controller (Type C for the PS5 controller), you can use a common Micro USB or Type C phone charging cable to charge the GamePad battery without using the original charging cable.

Method 3: Connect PS4 and PS5 game controllers to Windows 10 computer using USB Wireless Adapter

With USB Wireless Adapter, you can connect to PC without Bluetooth, stability will be improved and you will not have to experience disconnection in the middle of the game.

Made specifically for PC and Mac, Sony has optimized the features of the PS4 game controller as fully as when used on the PlayStation 4. For example, Motion sensor, vibration, Touchpad, external speaker, PlayStation Remote, PlayStation Now, . and longer usage time. The only drawback of this device is probably the higher price compared to other types of controllers and can only connect 1 controller/ 1 Adapter.

In addition, you can also use third-party USB Adapters to connect PS4, PS5 and even Xbox controllers, a typical representative is the USB Adapter product of **8bitdo** .



Instructions for use with the controller, plug the USB Wireless Adapter into the USB port on the computer. Press and hold the button on the device to activate the connection standby mode. When the indicator light of the USB Wireless Adapter and the green LED strip on the controller are both steady, the process of connecting the game controller to the computer is complete.

**Note: With PS4 and PS5 controllers, after connecting, if you are playing games on the Steam platform, your controller will be recognized immediately. However, if you are not playing Steam games, you will need to install additional DS4Windows software for the PC to recognize the controller.*

Above are the basic steps to guide you **on how to connect a game controller to your computer** simply, easily and effectively. Hopefully, it can help you have the best experience using the product, have the best relaxing time. If you have any questions about game controllers, please contact **TipsMake** today for the best advice and support.

Hotline: **1900.1903**

You finished reading the article "**The most convenient way to connect a game controller to your computer**" edited by the [TipsMake](#) team. We hope this article has provided you with many useful tech tips and tricks. You can search for similar articles on tips and guides. Thank you for reading and for following us regularly.