

# The most accurate way to test a computer's power supply? Measure the capacity. test the power supply.

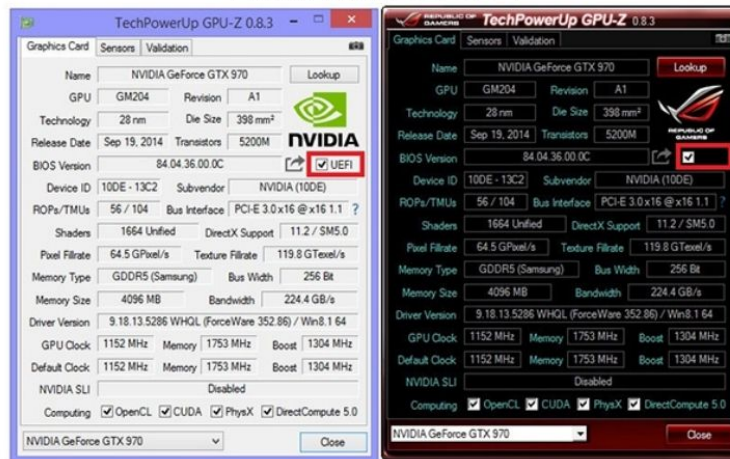
Learn how to test computer power sources most accurately, measure power source capacity with software to find appropriate treatment methods.

The computer power supply is the part that supplies electricity to computer components such as CPU, VGA,. When the computer has an error, the components can be affected quite a lot, causing many difficulties when using. Let's learn how to **test the computer power supply** most accurately, measure the power supply capacity with software to find appropriate treatment methods.

## How to test computer power source with software

### Check computer power source with CPU-Z software

Phần mềm GPU-Z



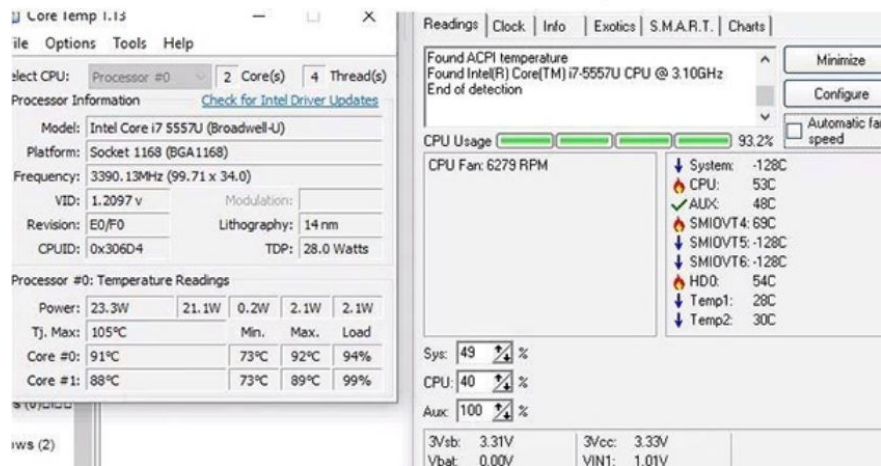
CPU-Z software is a software that measures the power consumption of computers and is commonly used to check computer power sources. This is a tool provided for free, exporting reports with detailed data about information of CPU , RAM, Mainboard, VGA, **computer power sources** ,.

### Check computer power source with GPU-Z software

Similar to CPU-Z, GPU-Z is also similar to both of them, both are quite popular **computer power testing** software today and are chosen to use differently. Besides the basic information provided by CPU-Z, GPU-Z also provides additional information about the computer's graphics card.

## Test computer power source with Core Temp software

### Phần mềm Core Temp

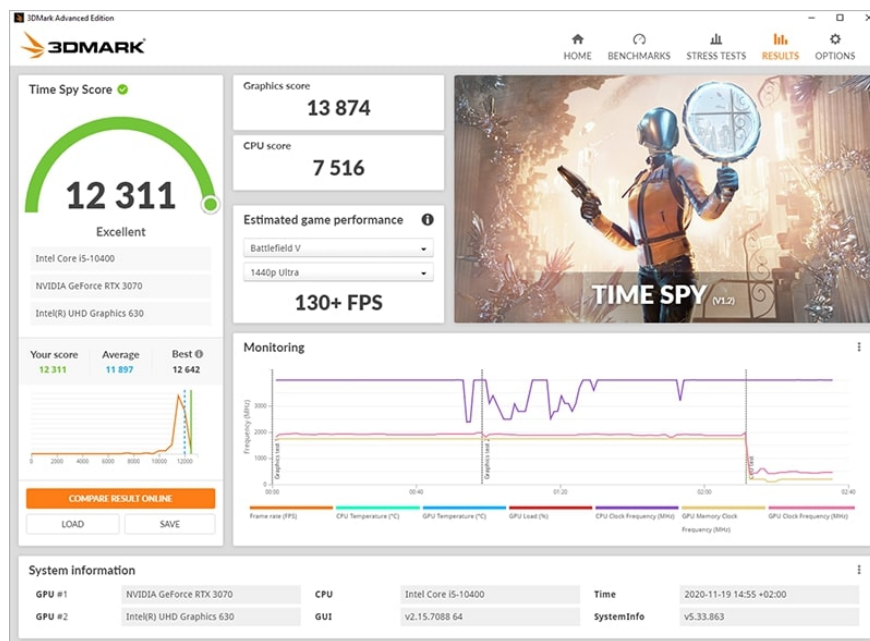


Core Temp provides CPU temperature monitoring features, helping users control the computer's operating status and test the computer's power source. Data on power consumption and current temperature will be aggregated and displayed to users when in use.

## Test computer power supply with AMD Catalyst Control Center

AMD Catalyst Control computer power measurement software helps users check CPU details in the power supply, compatible with AMD VGA cards. The software checks computer power as well as adjusts fan speed, cooling modes, and power supply to VGA cards via AMD Overdrive.

## Test computer power source via 3DMark



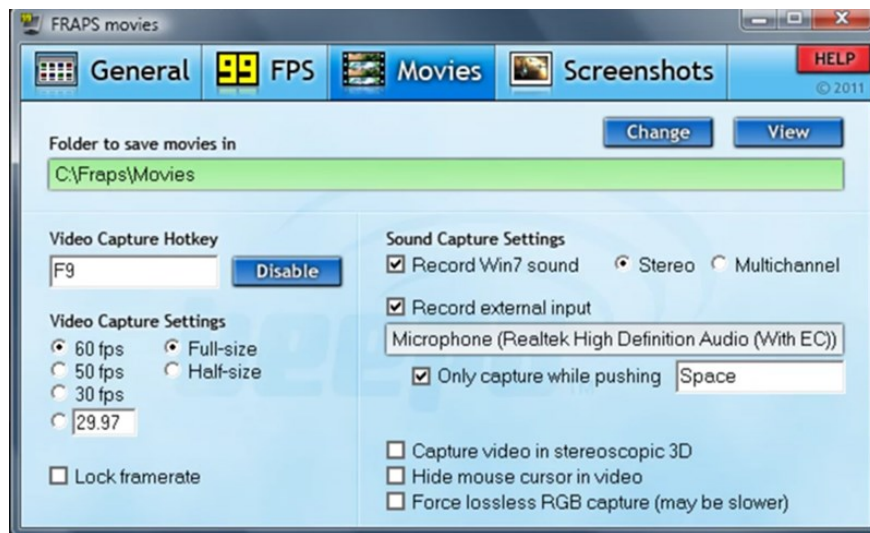
3DMark has a fast, free testing speed and gives quite accurate results, so it is often used when testing a specific computer power source.

## Check computer power source with Furmark

Furmark software helps users fully check the features and optimal capacity and at the same time recognize whether the VGA is overheating or not?

When the CPU is operating at too high a capacity, Furmark will blacklist common errors on the screen so that users can calculate a more suitable usage plan for the device.

## FRAPS computer power supply testing software



**FRAPS is a computer power testing** software that supports measuring the number of frames per second, especially when playing games. Helps users support capturing and recording errors that occur when the machine is operating.

## Test computer power source with Prime95

Prime95 is a software that supports testing computer power supplies, especially CPUs and overclocked computers. In some cases where the computer has a blue screen error, this software can also be used to check for errors.

## Test computer power source with Rainmeter software

Rainmeter is a computer power testing software that checks the main operating parameters of computer hardware such as: CPU, VGA , HDD,.

## Test computer power supply with EVGA Precision X



**EVGA Precision X is a computer power supply testing** software developed by EVGA specifically for NVIDIA graphics card users. However, this software also supports checking temperature, GPU clock speed or adjusting fan speed better.

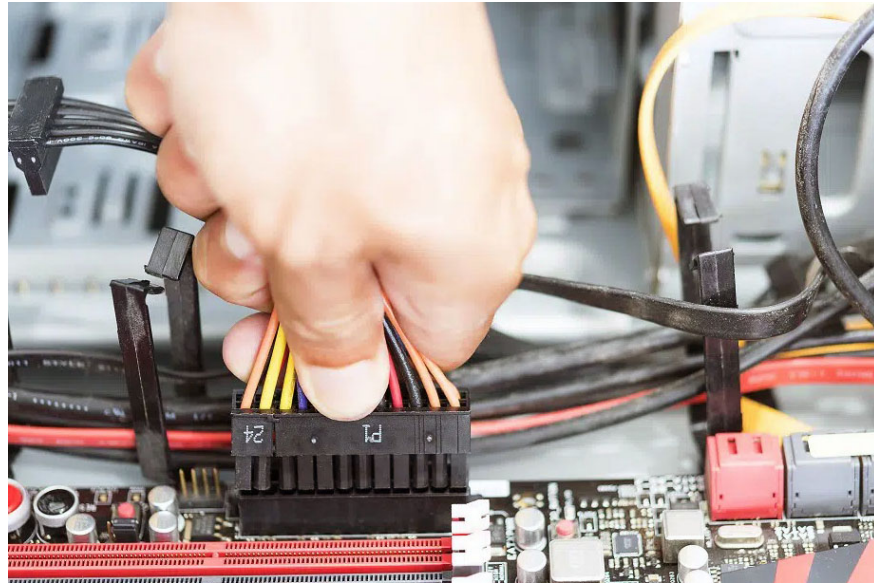
## Test computer power supply live or dead?

Computer power supply testing software is used to check whether the power supply is working properly through the display indicators. But to check whether the power supply is alive or dead, it needs to be checked with a completely different method.

Preparation: Power supply to be tested + electrical wire.

Perform:

1. Plug the wire into the green pin, the other end into any black pin.
2. Plug the power cord into the outlet, if the fan is running then the power is alive and vice versa the power is dead.



However, this is just a quick way to test the computer's power source because the power source is running but the power lines may be weak and the computer will not work.

## **The role of power source and power capacity for computers and PCs**

When **building a PC**, you need to pay attention to many different components such as: CPU, graphics card, **RAM** ., besides, the power supply also plays a quite important role.

A good power supply provides power for computer components to operate most stably. Therefore, if the power source is too small compared to the components, it will not be enough to provide power for the computer, affecting the performance of the **PC** .

You need to choose a computer power supply that suits your needs, ensuring that the computer can best perform its role and capacity. To choose a suitable power supply, you need to calculate the power line of the source and components, ensuring the accuracy of the power supply capacity.

Above are the simplest and easiest ways **to test computer power supplies for even non-professionals. To own the best computer power supplies and components, build a strong PC configuration that suits your needs and price, contact TipsMake today to receive the best advice and support.**

You finished reading the article "**The most accurate way to test a computer's power supply? Measure the capacity. test the power supply.**" edited by the [TipsMake](#) team. We hope this article has provided you with many useful tech tips and tricks. You can search for similar articles on tips and guides. Thank you for reading and for following us regularly.