

The fastest way to insert text into pictures in Word, anyone can do it!

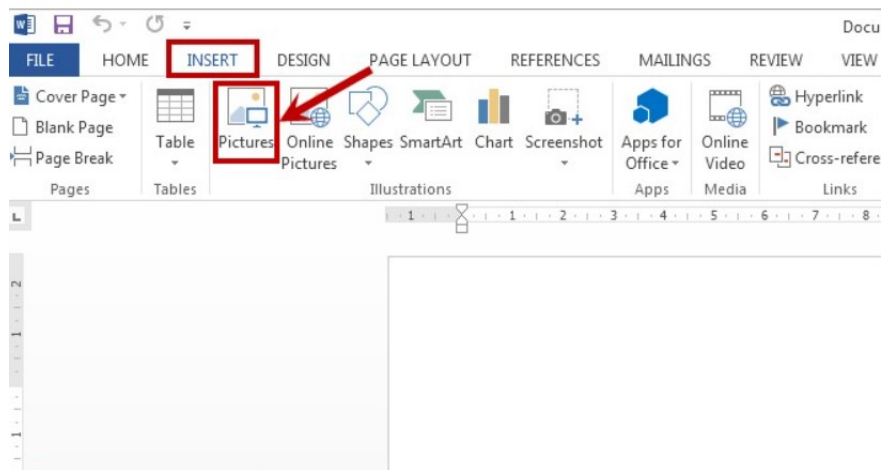
- Right on the word processing software Word, users can completely insert text into pictures quickly.

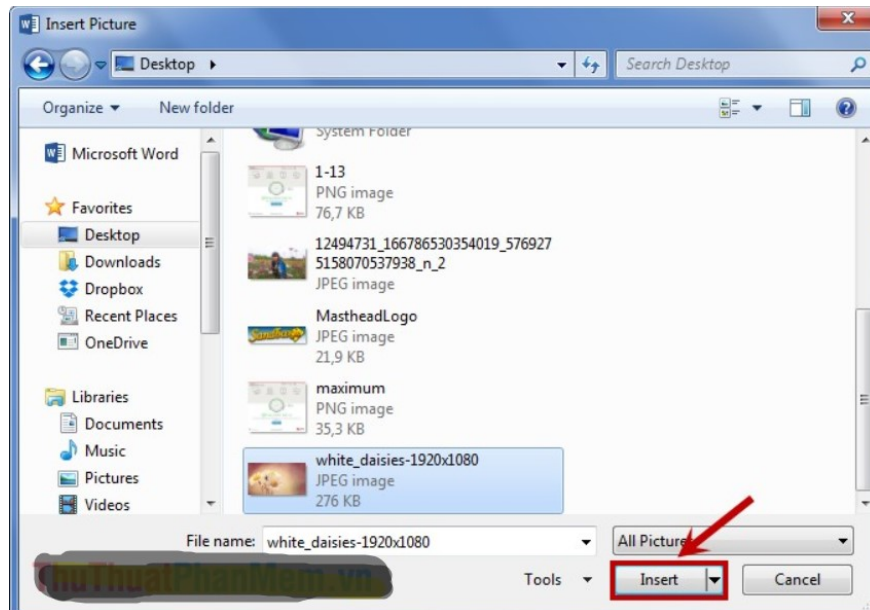
In addition to commonly used software such as Microsoft Paint, Adobe Photoshop or online photo editing programs. Few people know that you can edit photos at a simple level by inserting text into images right in Word. Right on this word processing software, users can insert text into images without having to edit in Paint or other photo editing programs first.

Below, TipsMake.com will show you a simple way to insert text into pictures right in Word

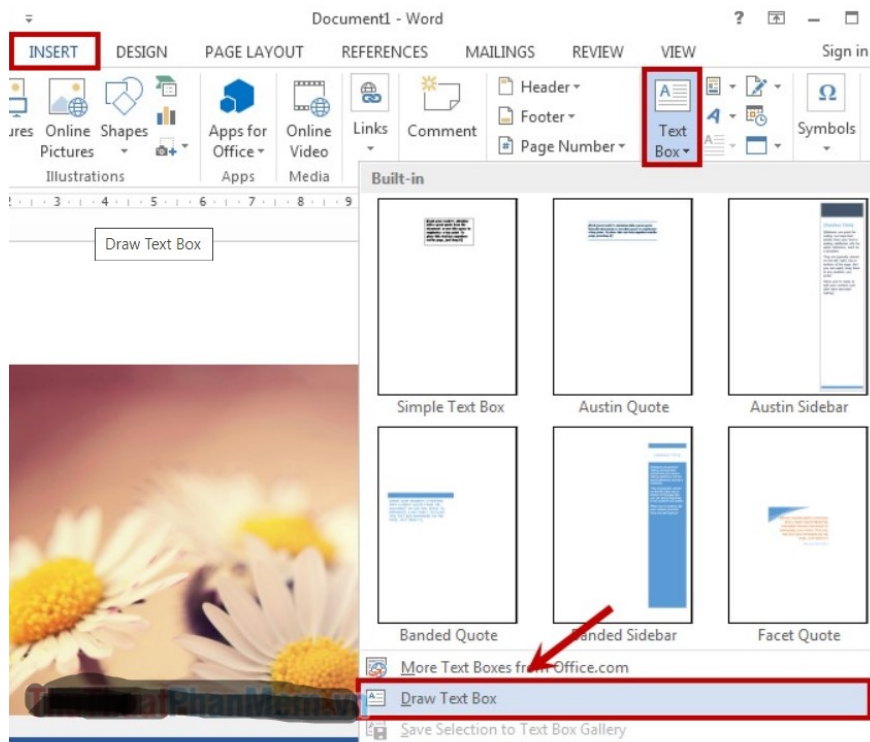
Instructions on how to write text on pictures on Word

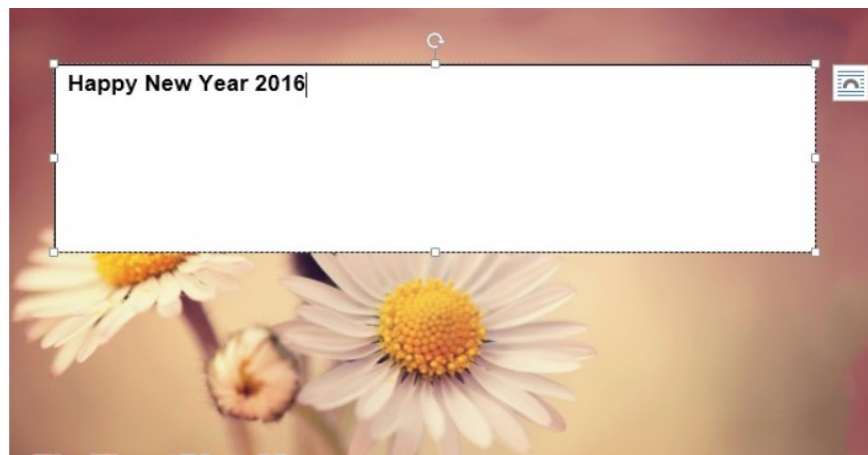
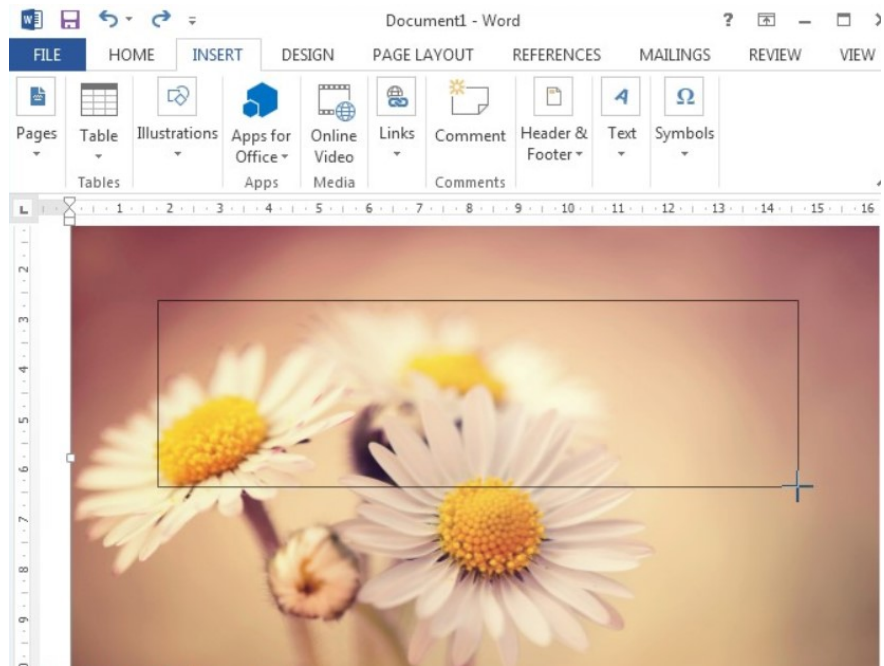
Step 1: Open the Word interface, click the Insert tab on the Ribbon, select the Picture item to select the image to insert into the Word interface.





Step 2: Click the image you want to insert into the folder and then press Insert. You can change the size or position of the image just by moving the mouse.



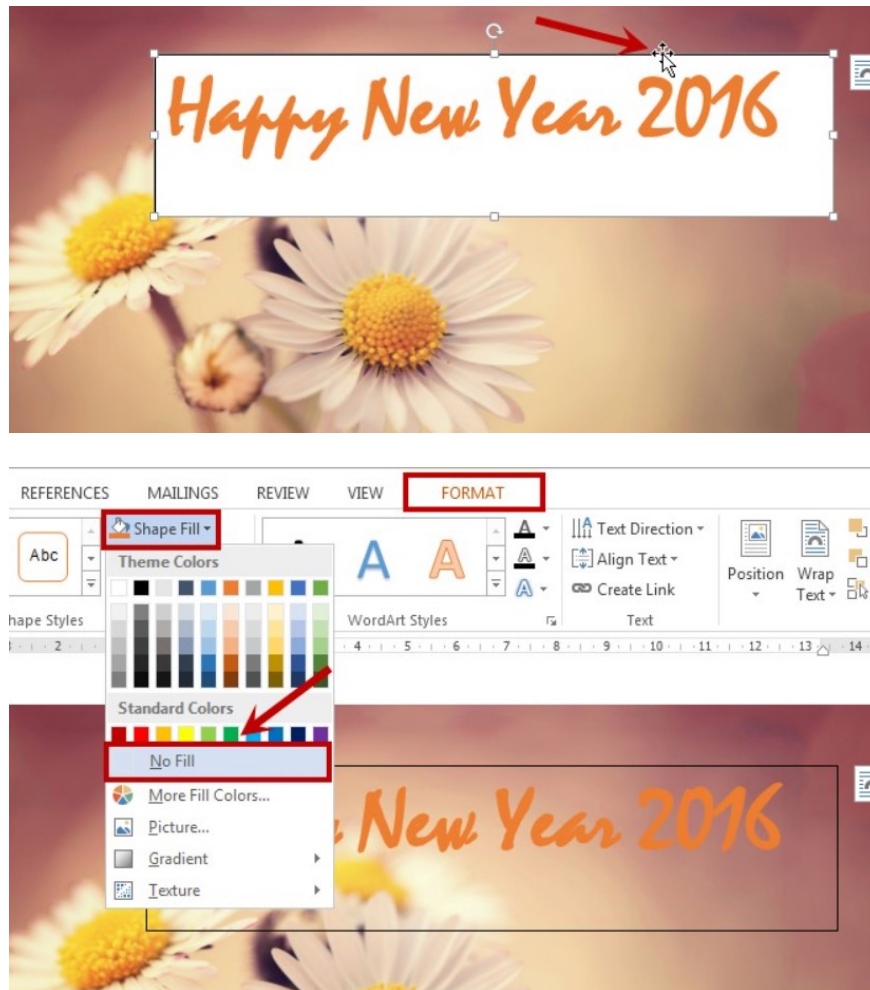


Step 3: Use the Text box tool to insert text into the image in Word, we will use the Text box tool. User click on Insert> Text box> Draw Text box.



Alternatively, users can perform image insertion operations with shapes: click Insert> Shapes> Text box as shown below.

Step 4: At the image you want to insert text, select the position you want to insert and click and drag the left mouse button to create a text input box. If desired, users can zoom in or zoom out, move the frame to any position you want. Next is to enter the text in the box.



Step 5: The last part will be the job of customizing letters, adding effects, formatting depending on the needs,

Regarding the font format such as choosing the font, font style, font color, you just need to black out the whole word and then right click to show the custom text table.



To remove the background color, just click the Format tab, select Shape Fill and click No Fill, then the white background color in the box will disappear.

To remove the border around the text input box, click Format, select Shape Outline and click No Outline to make the border surrounding the text box disappear.

The final result, you will create a frame that can be moved and enlarged, zoomed out if desired.

With the above simple tip, users absolutely can perform the operation of inserting many words with different formats into images right on a simple tool like Word.

You finished reading the article "**The fastest way to insert text into pictures in Word, anyone can do it!**" edited by the [TipsMake](#) team. We hope this article has provided you with many useful tech tips and tricks. You can search for similar articles on tips and guides. Thank you for reading and for following us regularly.