

The fastest way to Active Windows 10 Pro, Home using CMD

Are you looking for a simple, fast and effective way to Active Windows 10 immediately? Let's discover how to activate Windows 10 using CMD, a simple and convenient method without using external software.

Windows 10 is a popular operating system used by many people around the world. Active **Windows 10** using Command Prompt (CMD) helps you fully experience the features and stability of this operating system.

The simplest and fastest way to Active Win 10 with CMD

On July 29, **Windows 10** officially launched to users with outstanding and optimal features. With Microsoft supporting Active Windows 10 users, free license activation will help users experience after **installing Windows 10** on the computer.

1. Quick guide

At the main interface of Windows 10, go to the **Start** menu => enter and open **CMD with Administrator** rights => enter each license to activate Windows 10 in quotes below and press Enter.

- For Pro version: " **slmgr /ipk W269N-WFGWX-YVC9B-4J6C9-T83GX** " => " **slmgr /skms kms.xspace.in** " => " **slmgr /ato** "

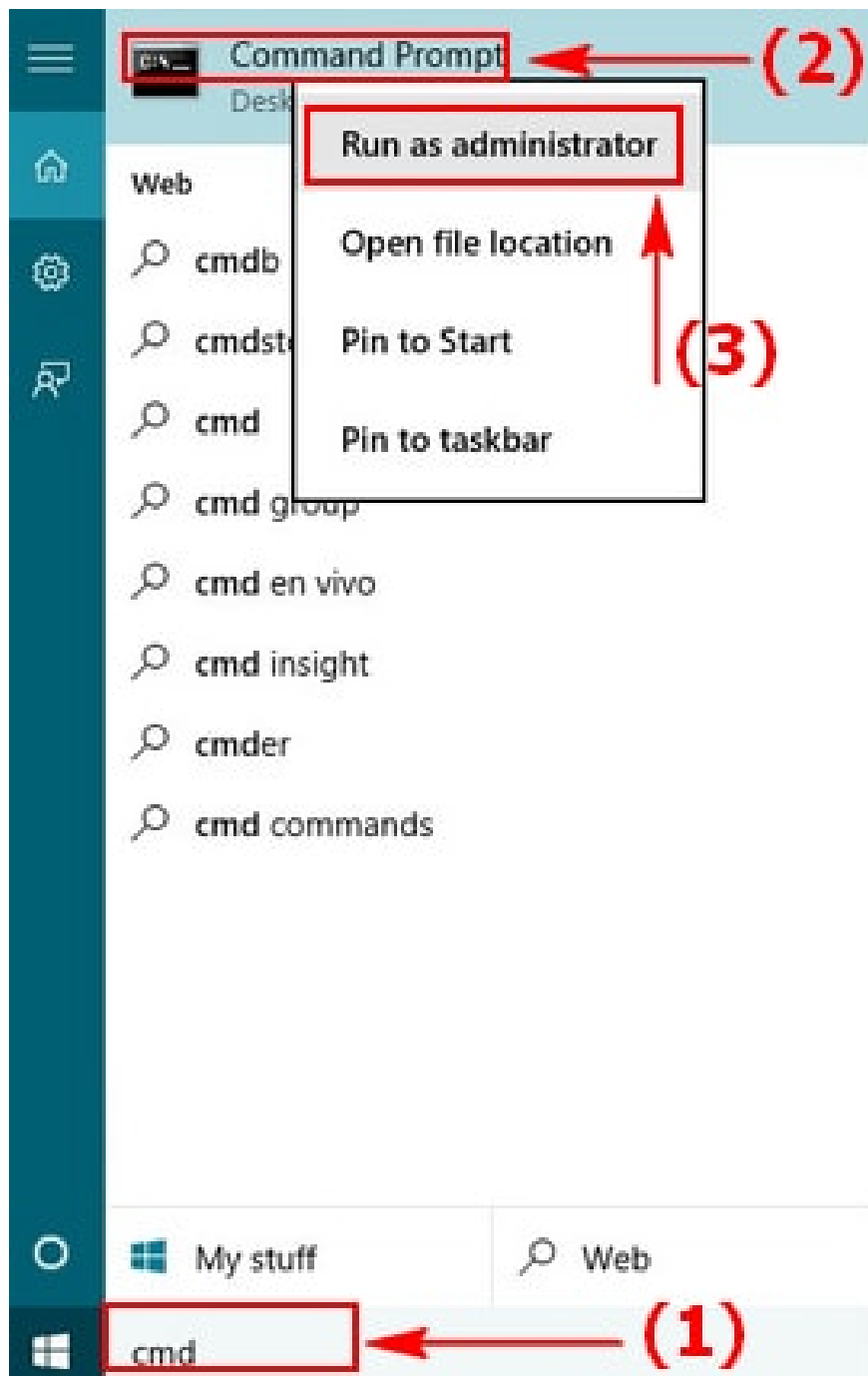
- For Home version: " **slmgr /ipk TX9XD -98N7V-6WMQ6-BX7FG-H8Q99** " => " **slmgr /skms kms.xspace.in** " => " **slmgr /ato** "

2. Detailed instructions

Step 1: Open the cmd window and select Run as Administrator

- Active Windows 10 is quite simple, mainly using commands on the cmd window, so the first step you need to do is open it and remember to select Run **as Administrator**

- From the **Start** menu enter " **cmd** " => Right click and select **Run as Administrator**

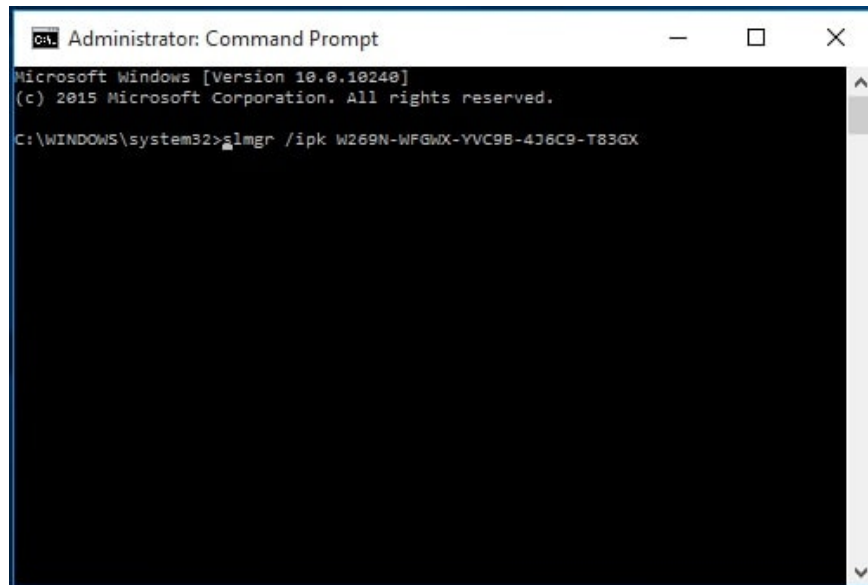


Step 2: Enter the command to activate Windows 10 180 days

- At the Command Prompt window, enter the command:

+ For Pro version: " *slmgr /ipk W269N-WFGWX-YVC9B-4J6C9-T83GX* "

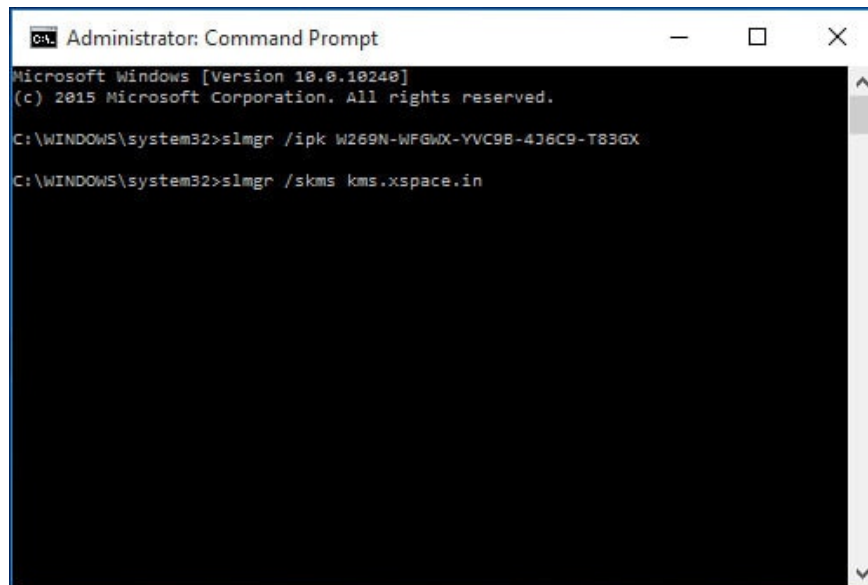
+ For Home version: " *slmgr /ipk TX9XD-98N7V-6WMQ6-BX7FG-H8Q99* "



```
Administrator: Command Prompt
Microsoft Windows [Version 10.0.10240]
(c) 2015 Microsoft Corporation. All rights reserved.

C:\WINDOWS\system32>slmgr /ipk W269N-WFGWX-YVC9B-4J6C9-T83GX
```

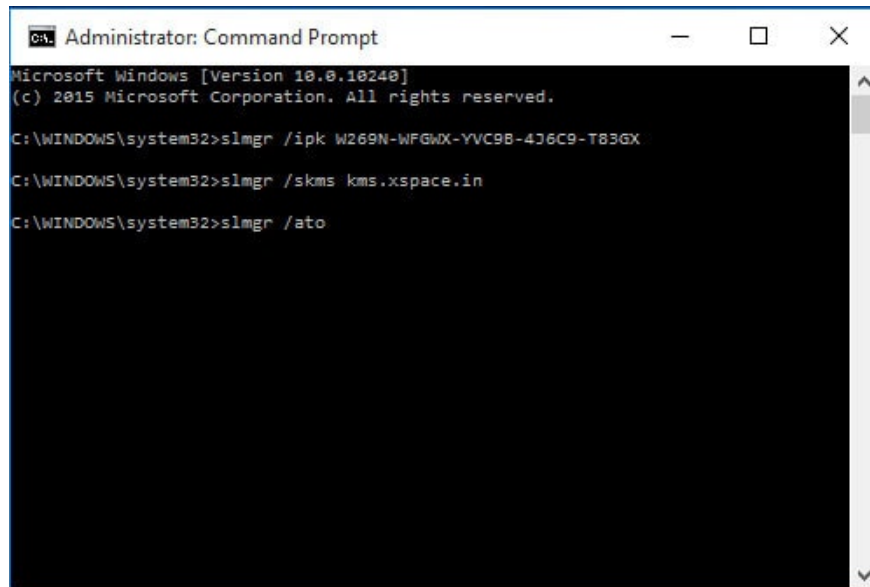
- Then press **Enter** , enter the command: " *slmgr /skms kms.xspace.in* "



```
Administrator: Command Prompt
Microsoft Windows [Version 10.0.10240]
(c) 2015 Microsoft Corporation. All rights reserved.

C:\WINDOWS\system32>slmgr /ipk W269N-WFGWX-YVC9B-4J6C9-T83GX
C:\WINDOWS\system32>slmgr /skms kms.xspace.in
```

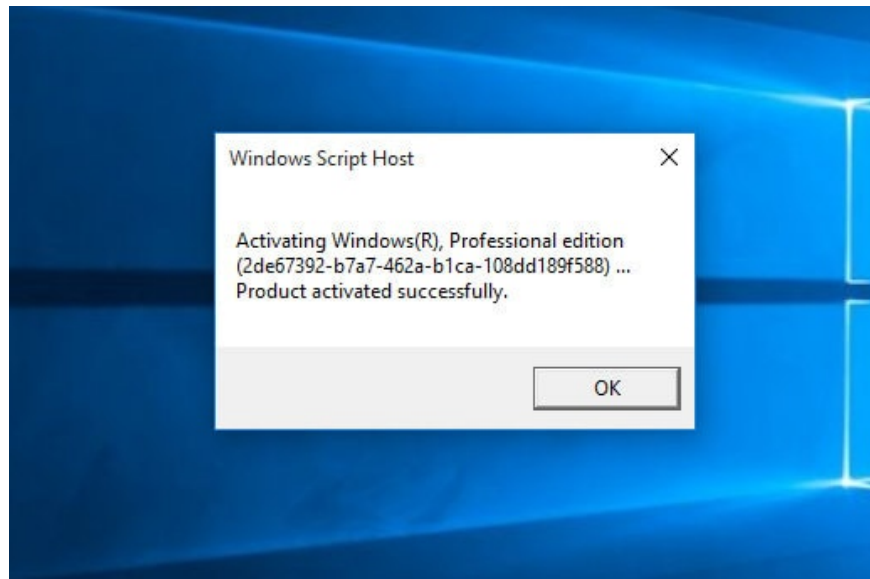
- Press **Enter** and continue entering the following command: " *slmgr /ato* "



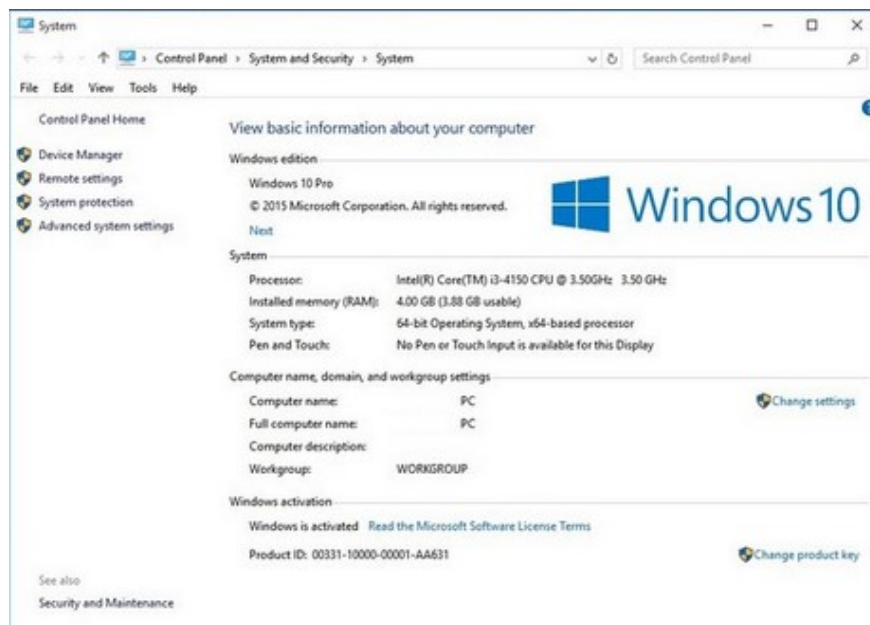
```
Administrator: Command Prompt
Microsoft Windows [Version 10.0.10240]
(c) 2015 Microsoft Corporation. All rights reserved.

C:\WINDOWS\system32>slmgr /ipk W269N-WFGWX-YVC9B-4J6C9-T83GX
C:\WINDOWS\system32>slmgr /skms kms.xspace.in
C:\WINDOWS\system32>slmgr /ato
```

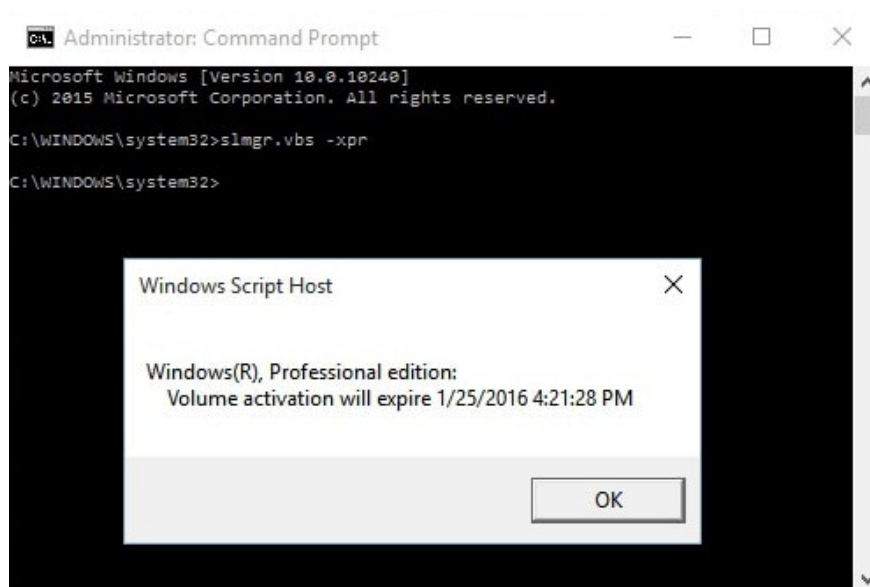
- Press **Enter** to finish.



After activating Windows 10 this way, users have 180 days to use Windows 10 with the most complete features of this advanced operating system. Below is an image of Windows 10 64 Bit version successfully installed and Active.



To check the expiration date of the Key you use, you can use the command " *slmgr.vbs -xpr* " to check.



So TipsMake has guided you how to Active Windows 10, successfully activate the 180-day Windows 10 license to use new features on today's most advanced operating system. With a period of up to 6 months of free use, users can freely explore. However, users need to learn things to note before **upgrading to Windows 10** because not all computer configurations can meet the requirements of Win 10.

You finished reading the article "**The fastest way to Active Windows 10 Pro, Home using CMD**" edited by the [TipsMake](#) team. We hope this article has provided you with many useful tech tips and tricks. You can search for similar articles on tips and guides. Thank you for reading and for following us regularly.