

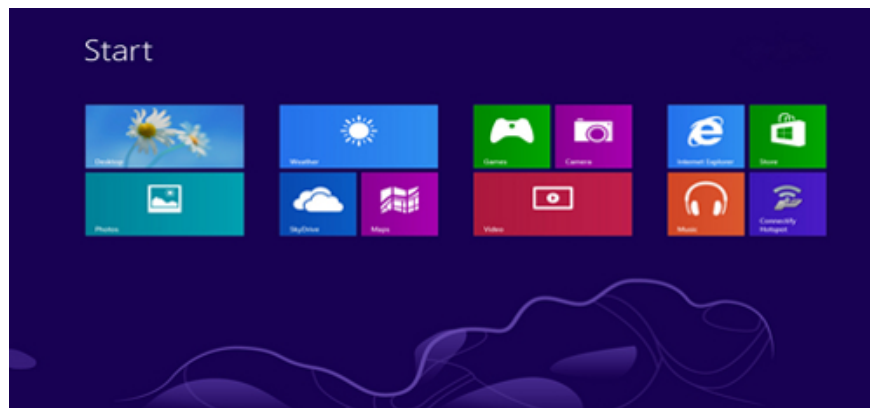
The easiest way to play Wifi on Windows 8

Windows 8 has many advantages such as touch screen support, Modern UI, high performance, quick start-up and receiving most drivers. But incomprehensible, this operating system does not equip ad-hoc Wi-Fi function like Windows 7 and some software with Wifi playback function are not working, such as My Public Wifi.

Windows 8 has many advantages such as touch screen support, Modern UI, high performance, quick start-up and receiving most drivers. But incomprehensible, this operating system does not equip ad-hoc Wi-Fi function like Windows 7 and some software with Wifi playback function are not working, such as My Public Wifi.

The easiest solution to fix this problem is to use Connectify software. You can download this software here. There are two options: the free Lite version and the paid Pro version. Here's how to use Connectify software to play Wifi:

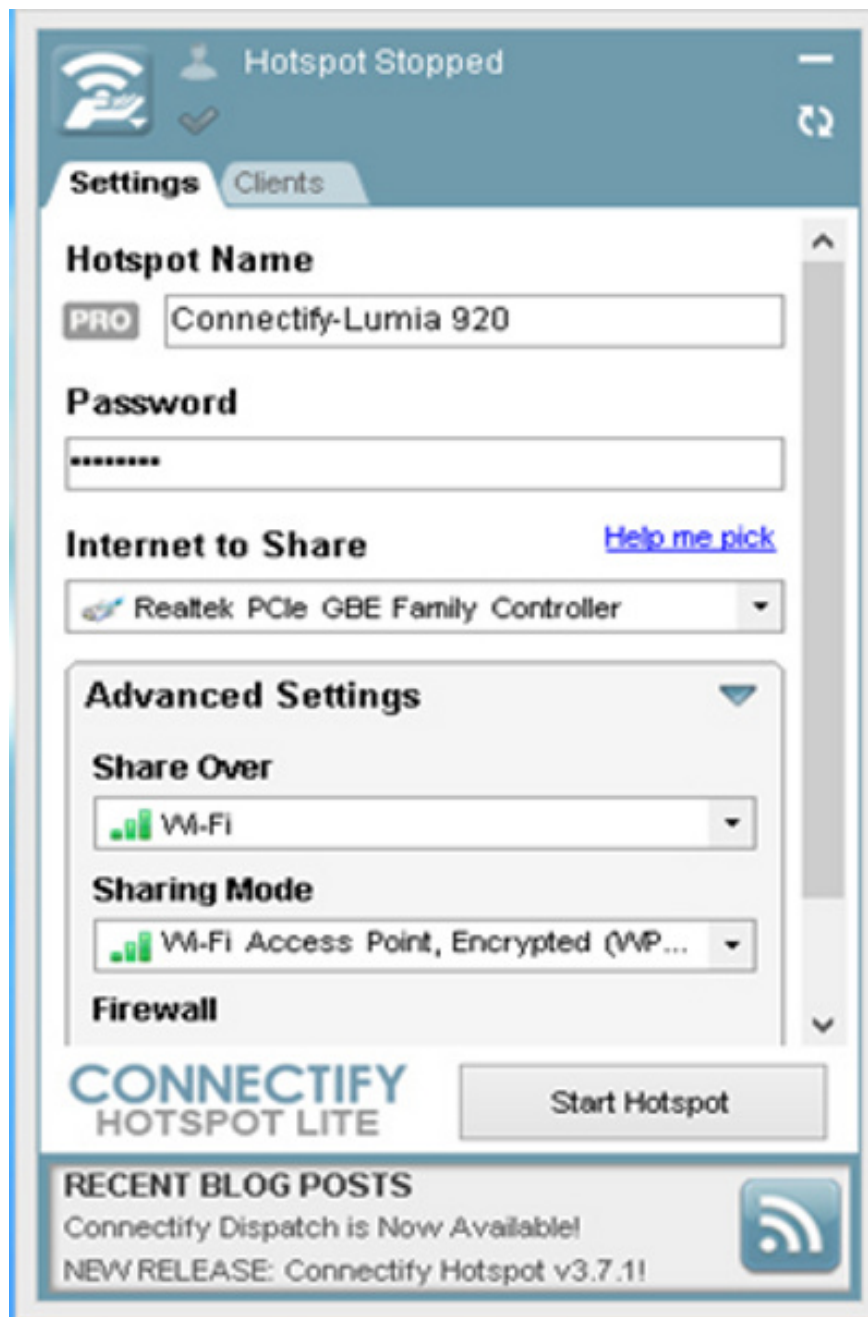
Step 1: After downloading the software at the home page, the installation will appear with the icon of Connectify in the Modern UI interface as shown below, select the icon:



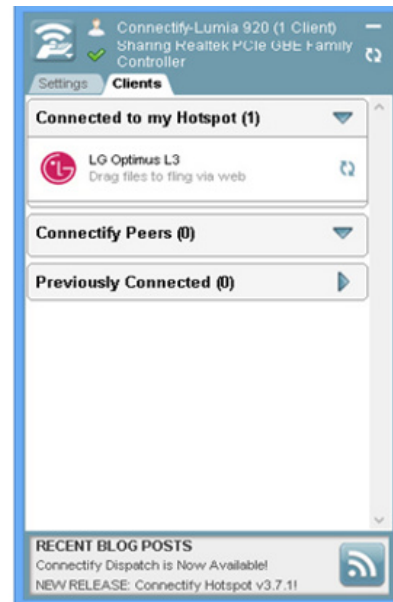
Step 2: The device will switch to the normal Windows interface and the window of Connectify will appear



Step 3: At the **Settings** tab in the window of **Connectify** , please enter the following information: **Hotspot Name** (your Wi-Fi network name when playing), **Password** (Wifi password, at least 8 characters). At the **Internet To Share** line, you choose the network you are using (wired network, 3G / 4G network from Dcom). At **Advance Settings** , you can keep the original selection from **Connectify**. For example, in the picture below, I named the network **Lumia 920** , password is **12345678** , **Internet to Share** chose **Realtek PCIe GBE Family Controller** (because I am using wired network), **Advanced Settings** parameter remains the same.



Step 4: Select **Start Hotspot** to start broadcasting Wifi. When the word **Start Hotspot** changes to **Stop Hotspot**, you have succeeded. Using the computer and smartphone to connect to the Wifi network already connected, see the connection information on the **client** tap.



I wish you all successful Wifi distribution with this Connectify software.

You finished reading the article "**The easiest way to play Wifi on Windows 8**" edited by the [TipsMake](#) team. We hope this article has provided you with many useful tech tips and tricks. You can search for similar articles on tips and guides. Thank you for reading and for following us regularly.