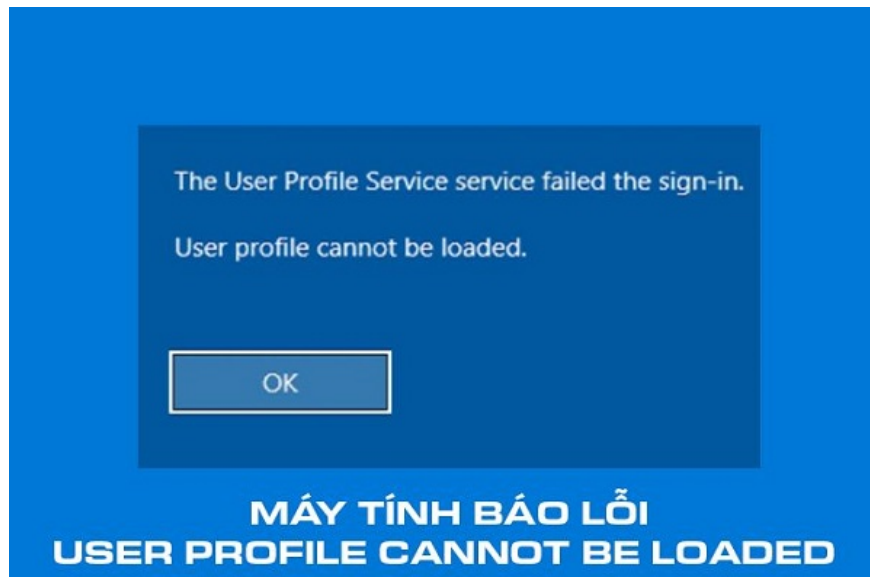


# The computer reports the error user profile cannot be loaded, how to fix it?

The computer reports an error: user profile cannot be loaded, making it impossible for you to access the computer. This is an extremely difficult error to fix, but you can still try some information shared by TipsMake to see if it can be fixed!

To protect data, many people have set passwords for their computers. This is completely normal until **the computer reports the user profile cannot be loaded error** . At this time we will not be able to access the computer as usual. Of course, this will greatly affect work progress. In case you are struggling to know how to handle the error user profile cannot be loaded, please come to the following content immediately.





## Why does the computer show an error: user profile cannot be loaded?

When you receive the message **The User Profile Service failed the logon** when logging in. This means the system wants to notify you that your login profile has been corrupted. This situation often occurs after you update the operating system from Win 7, Win 8 to Win 10. If you receive the message **the user profile service failed the sign-in user profile cannot be loaded** on Win 11. Then yes Which means you are also experiencing the same situation.

The main cause of this condition is mostly viruses. In addition, sometimes this error also originates from errors during the operating system update process.

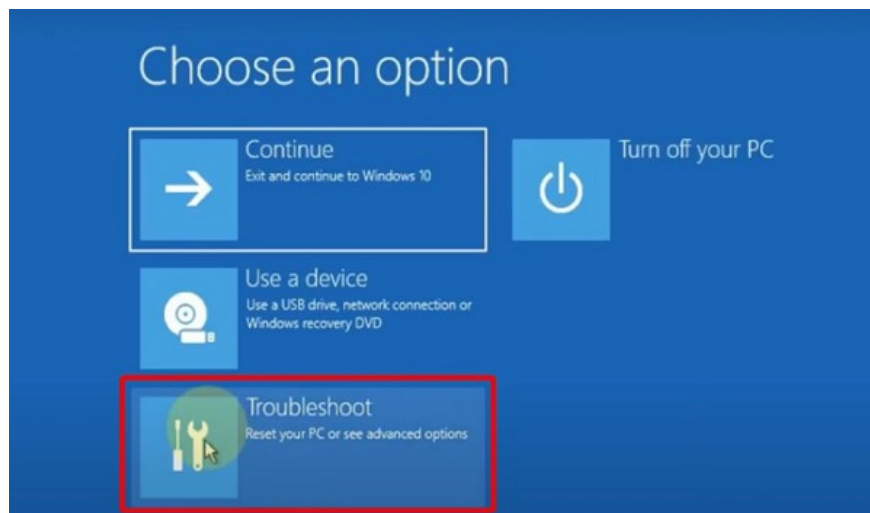
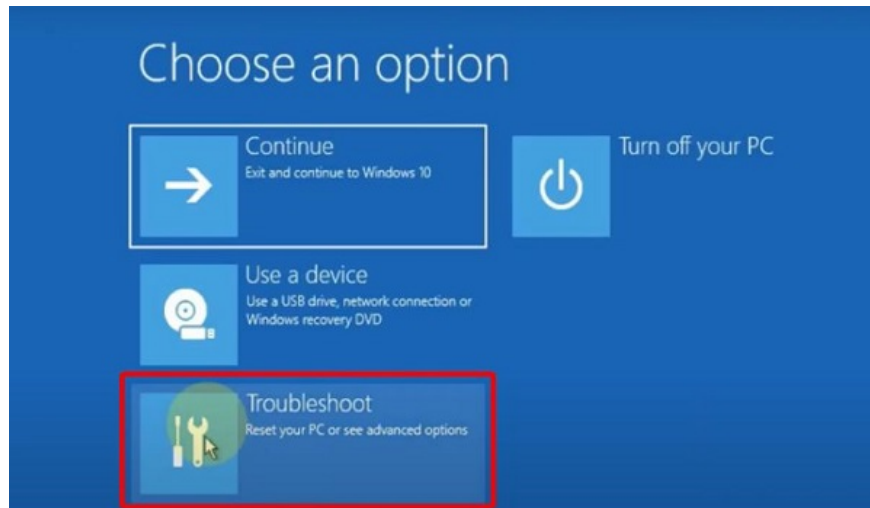
## Ways to fix User profile cannot be loaded error on the computer

It is an extremely annoying error when we cannot access the computer. However, don't rush to take your device to the store and try some of the options below to see if the situation gets better!

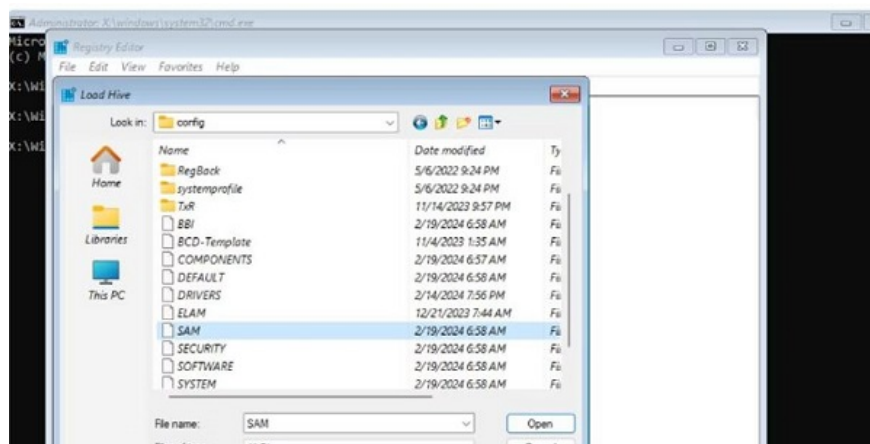
### 1/ Fix error User profile cannot be loaded Win 10 using Windows Recovery Environment

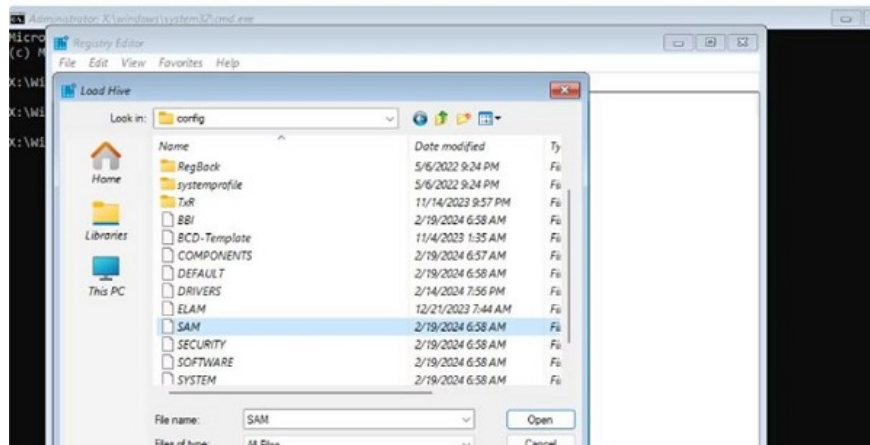
When you encounter the error the user profile service failed the sign-in Windows 10. The first thing you should do is activate the integrated admin account. Without this setting, all fixes will not be possible.

1. **Step 1** : Click on the source icon on the computer screen. Then hold down **shift** and click **restart** .
2. **Step 2** : When your computer restarts, click **continue** and then select **Troubleshoot** .



1. **Step 3** : Select **Advanced Options** > **Command Prompt** .
2. **Step 4** : When the Command prompt window appears, type **regedit** and **enter** .
3. **Step 5** : Select **HKEY\_LOCAL\_MACHINE** then go to **File > Load Hive** .
4. **Step 6** : Select **This PC** then search for **Windows > System 32 > config** .
5. **Step 7** : Find and double-click the **SAM** file , name the key **REM\_SAM** and click **ok** to save.





1. **B8** : Return to the registry screen and search for the path.  
**HKEY\_LOCAL\_MACHINEREM\_SAMSAMDomainsAccountUsers?00001F4**
2. **Step 9** : Double click on the binary value **F** , then go to entry **00000038** in the first row.
3. **Step 10** : Change the value 11 in the second column of row **00000038** to **10** and press **ok** .
4. **Step 11** : Exit the **registry** window , close **Command Prompt** . Then click **Continue** to boot to the lock screen. At this point, you will see an additional admin account appear on the lock screen.

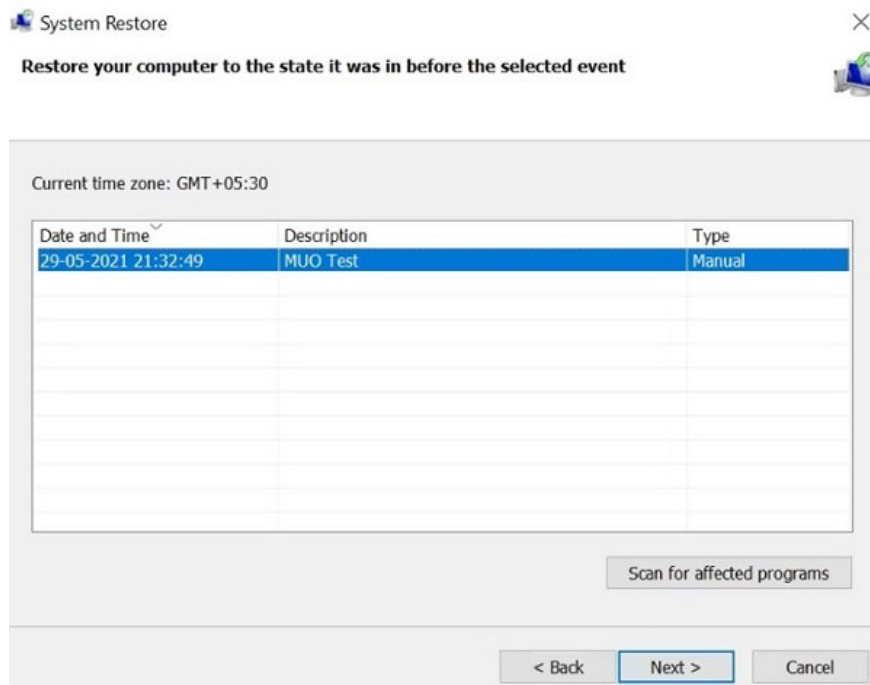
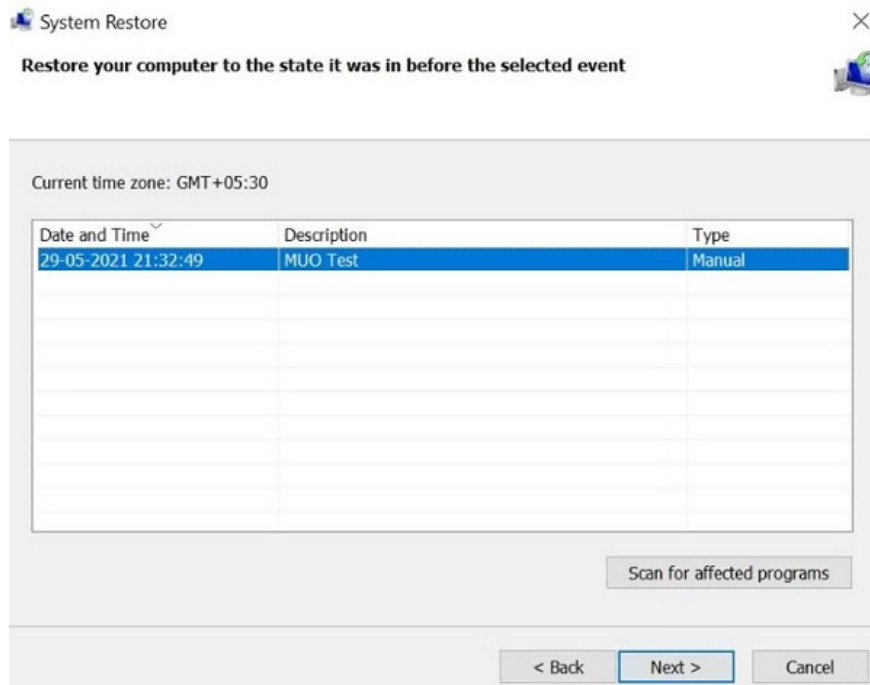
## 2/ Start safe mode

Once you have successfully activated the integrated admin account. Now the first thing you should do is boot into safe mode. When entering this mode, you will be able to perform operations such as deleting 'strange' files and scanning for viruses so that your computer can operate stably again. To enter safe mode, try continuously pressing the F8 key when booting!

## How to fix User profile cannot be loaded error in Windows 11?

Above, I showed you how to fix the error when your computer reports the error user profile cannot be loaded on Windows 10. So what should you do if you want to fix the error the user profile service service failed the sign-in in Windows 11?

Rest assured because you can completely apply the methods I introduced above to handle errors. In addition, you can also refer to a few other measures such as using **SFC** to scan for damaged files, restore the computer to a previous state or change the registry configuration.



**And above is some information that I think you will need when you encounter a computer error message user profile cannot be loaded. With the information I bring, I hope you can quickly resolve the error. But if luck is not on your side, it's best to take your computer to have it checked!**

You finished reading the article "**The computer reports the error user profile cannot be loaded, how to fix it?**" edited by the [TipsMake](#) team. We hope this article has provided you with many useful tech tips and tricks. You can search for similar articles on tips and guides. Thank you for reading and for following us regularly.