

# The chin shape reveals many unexpected information about your childhood

According to research recently published in the journal Human Biology: The shape of the chin can tell you a lot about your childhood.

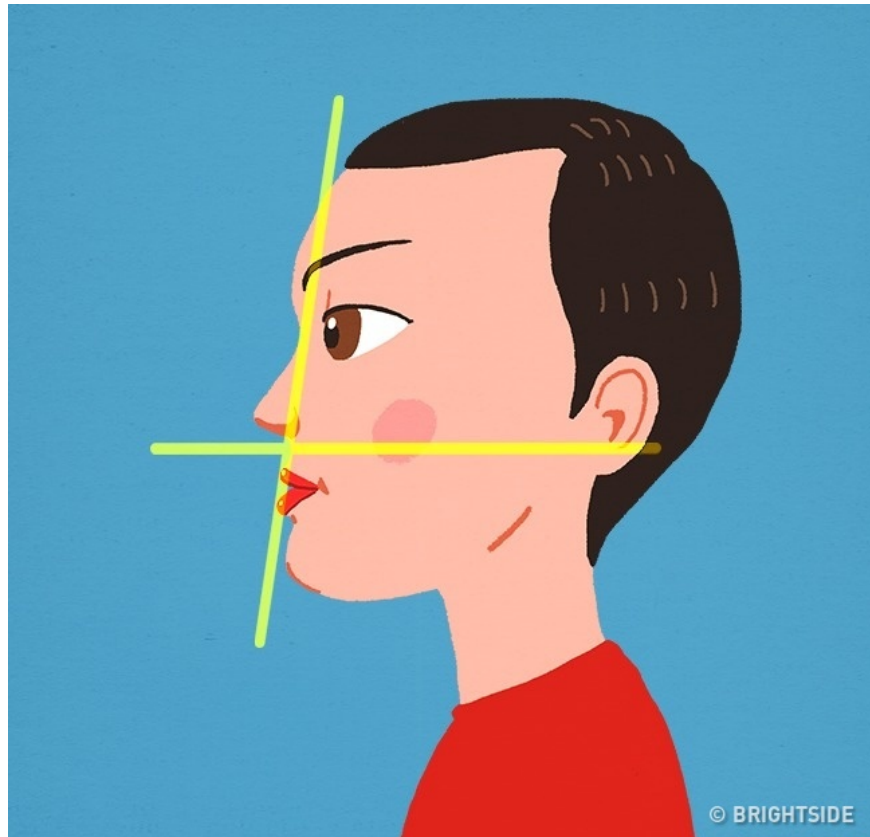
According to research recently published in the journal Human Biology: The shape of the chin can tell you a lot about your childhood.

1. What taste does the nose taste, is it good for health?
2. Health warning behind the "wink" that everyone thinks is premonition

Scientists have studied and drawn conclusions based on the symmetry on the faces of more than 6,600 teenagers, aged 12-17.

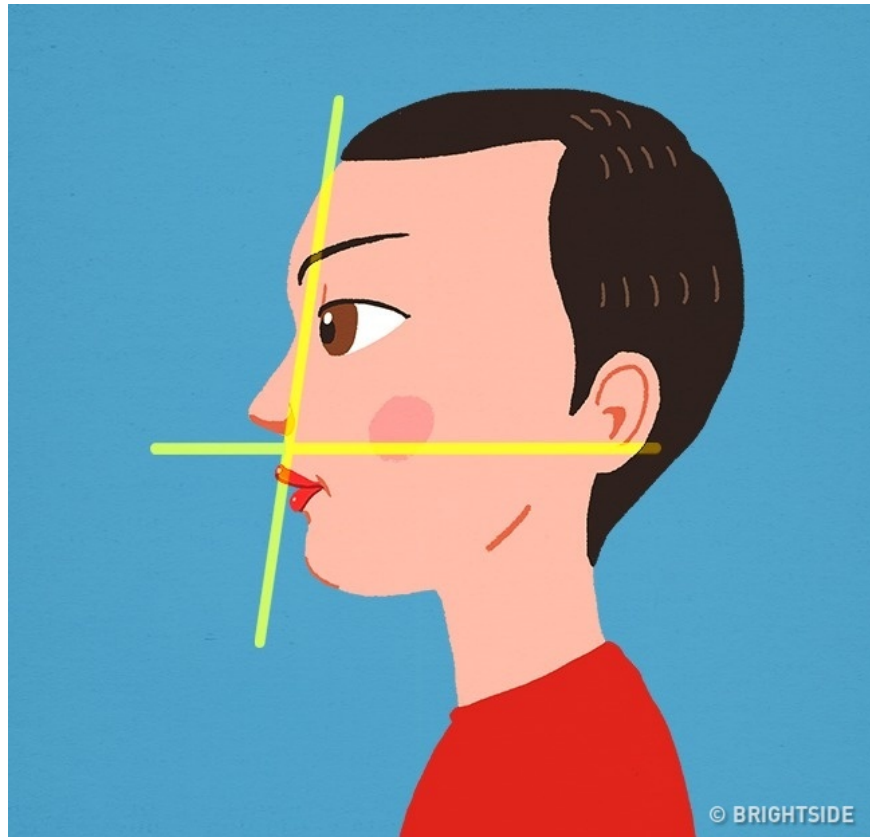
Let's explore to see how your childhood affected your chin and jaw shape!

## Chin protruding



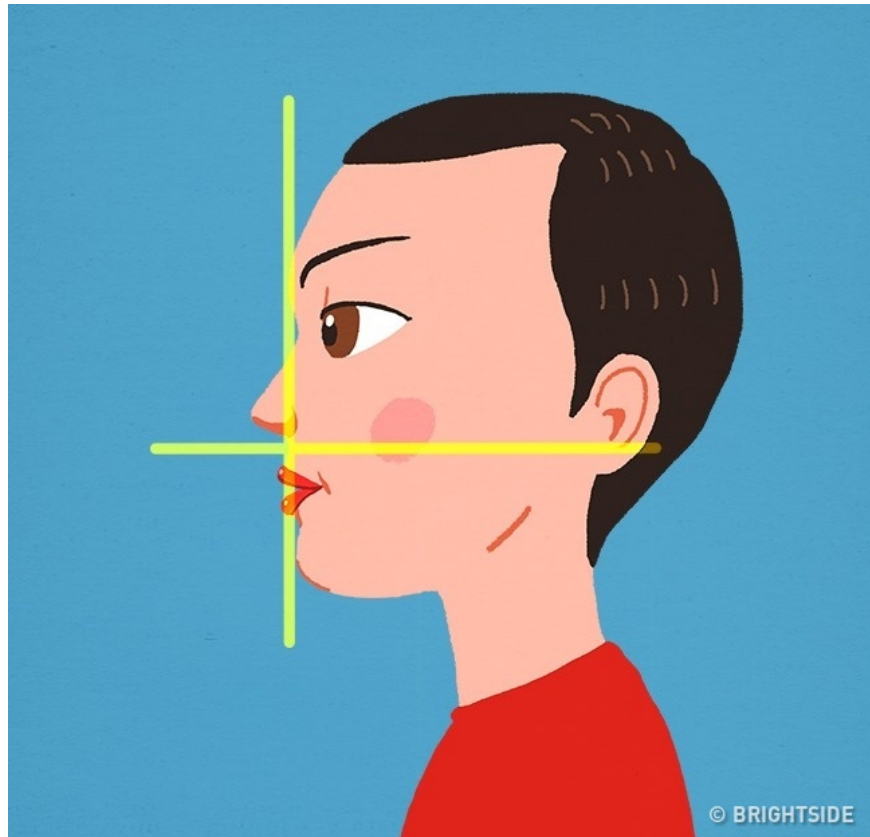
People with lower jaws protruding are those with strong muscles and a skeleton but they are also fat.

**Chin recessed**



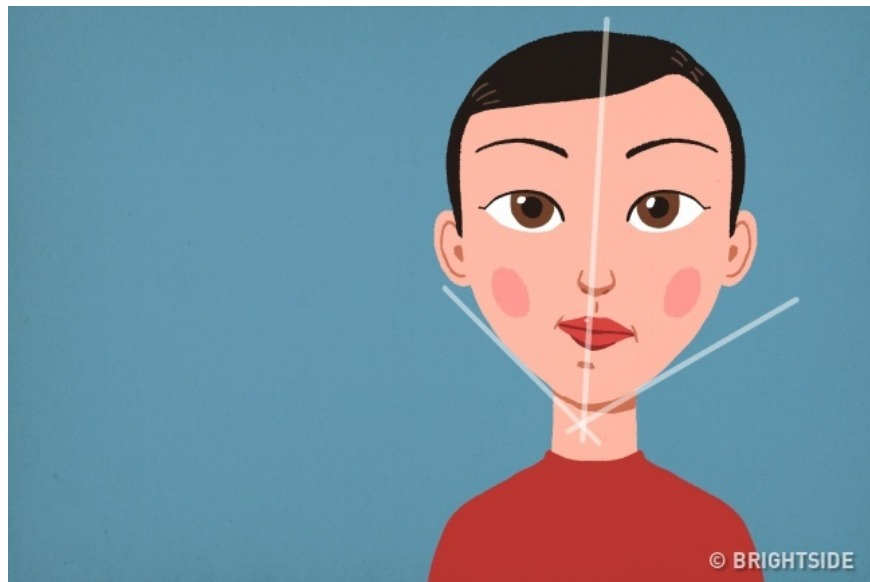
In contrast, an indented chin indicates you have a weakly developed muscle, flexible bones. These people are very fat and tend to be color blind.

## **Balanced flat chin**



Flat chin is a completely inherited trait, not affected by external or environmental factors.

## **Asymmetric function**



The cause of the imbalance of the jaw is due to physical stress during childhood rather than congenital. It is possible that nutritional conditions or quality of medical care for you as a child are not good, such as early weaning, protein deficiency, the effects of heavy metals, obesity, and tobacco.

According to research results, 1 out of 4 people will have a symmetrical chin. Both protruding chin and recessed chin can be asymmetrical. This asymmetry is very small, only orthodontic doctors can observe with the naked eye.

However, you still have to test yourself if your jaw structure is asymmetrical in many ways. If you have one or more of the following signs, you probably have an asymmetric function structure:

1. You often chew one side more than the other when eating.
2. In some teeth, tartar appears more.
3. Occasionally, you have root bleeding.

You finished reading the article "**The chin shape reveals many unexpected information about your childhood**" edited by the [TipsMake](#) team. We hope this article has provided you with many useful tech tips and tricks. You can search for similar articles on tips and guides. Thank you for reading and for following us regularly.