

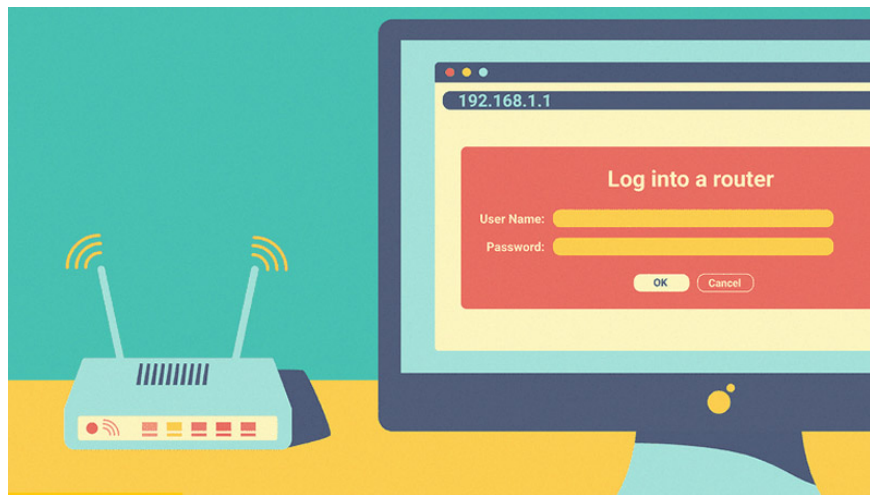
The cause and how to fix the error is not accessible 192.168.1.1

There are many reasons for not being able to access 192.168.1.1. Error of accessing page 192.168.1.1 makes the user unable to change the password or customize the modem.

The following article will explain you the reasons as well as how to get access to 192.168.1.1. Besides, there are IP details of some famous brands, follow along!

1. What is 192.168.1.1?

According to IT experts: 192.168.1.1 is also known as the Home Gateway. Put simply, this is the Default Gateway address, which allows users to directly access the administration system of the device, router or other Wi-Fi. When you log in Modem through the default gateway 192.168.1.1. You can edit network settings, change Wi-Fi passwords, or Wi-Fi settings, and more.



2. What is the reason for not being able to access 192.168.1.1?

- The ID for logging into the Wi-Fi modem is not 192.168.1.1

A lot of people mistakenly think that 192.168.1.1 can be logged into all devices. This makes it impossible for users to use the 192.168.1.1 number to access and change the password name or other settings of the device.

If you want to stop the technical error above, you can reset the Modem to get the default number. In case the login IP does not match the device's IP, you need to base on the device's brand to search for the default number.



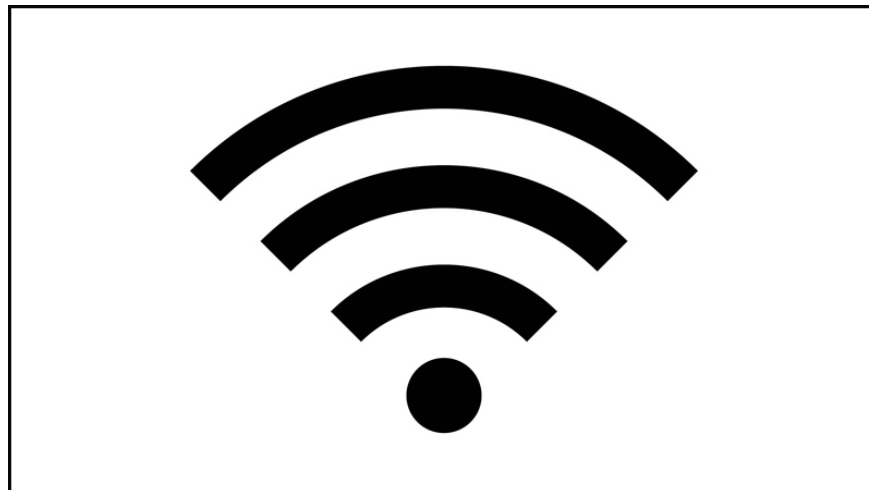
- There is more than one Wi-Fi transmitter nearby

When there is more than one WiFi transmitter inside the system, accessing the 192.168.1.1 page will be very error prone. Now you need to identify the same access address in order to be able to log into the system.

3. How to fix the 192.168.1.1 inaccessible error?

3.1. When Only 1 Modem

Step 1: Make sure your network device is still working.



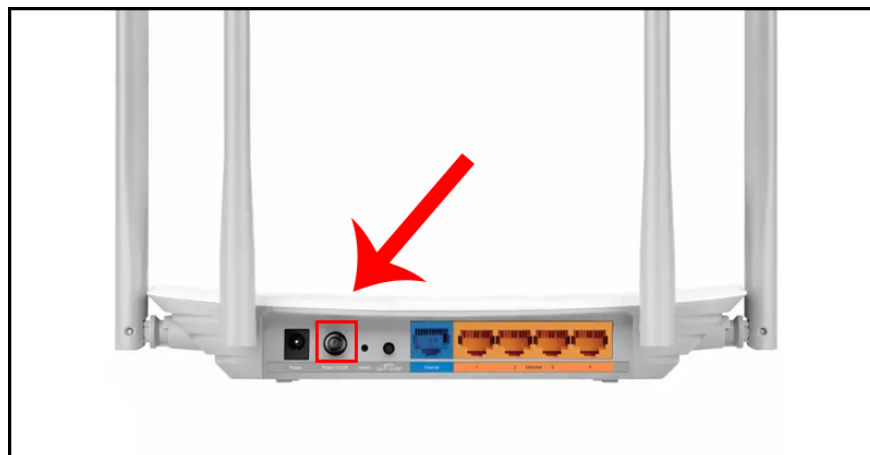
Step 2: Make sure to connect directly from the computer to the Modem or the WiFi Router by wired network via Lan port and unplug all the existing network cables on the device to improve the accuracy.



Step 3: Flip behind the Modem, the device that you are using will have an address to access the Default Gateway.



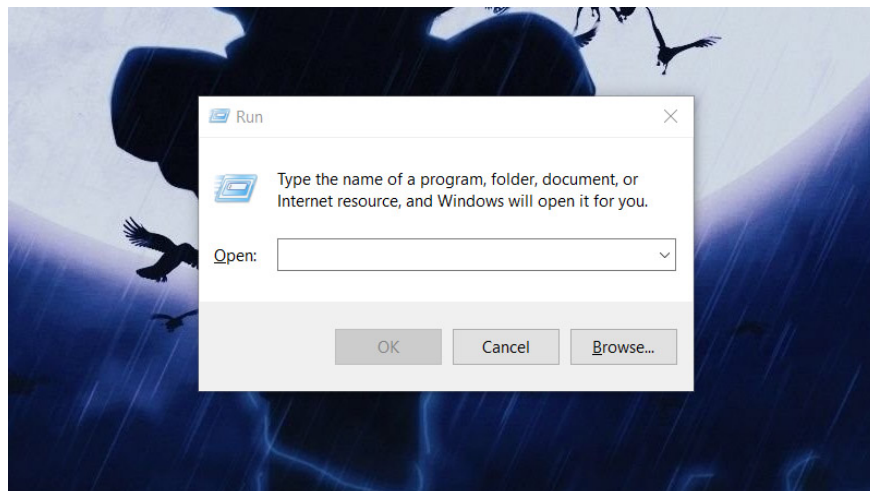
Step 4: If you can't access the device by default address. Now you need to reset the device and proceed to login 192.168.1.1 address normally.



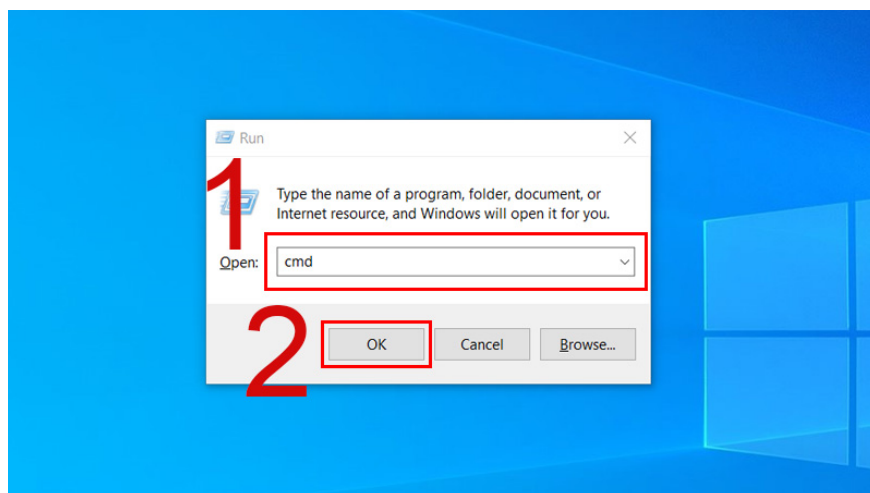
3.2. When There Are Multiple Modems

- Method 1: Enter Cmd

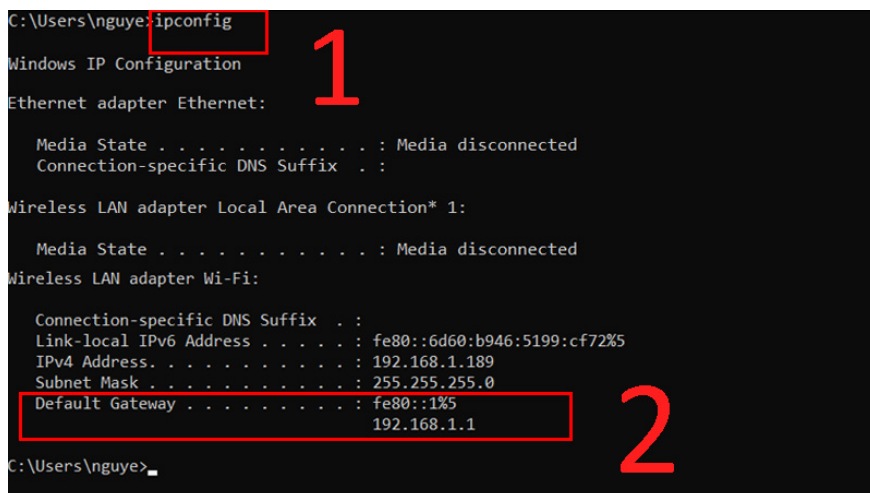
Step 1: Using the function key Windows + R> The Run window appears.



Step 2: Next, enter the box Open with the word 'cmd'> Press the Enter key.

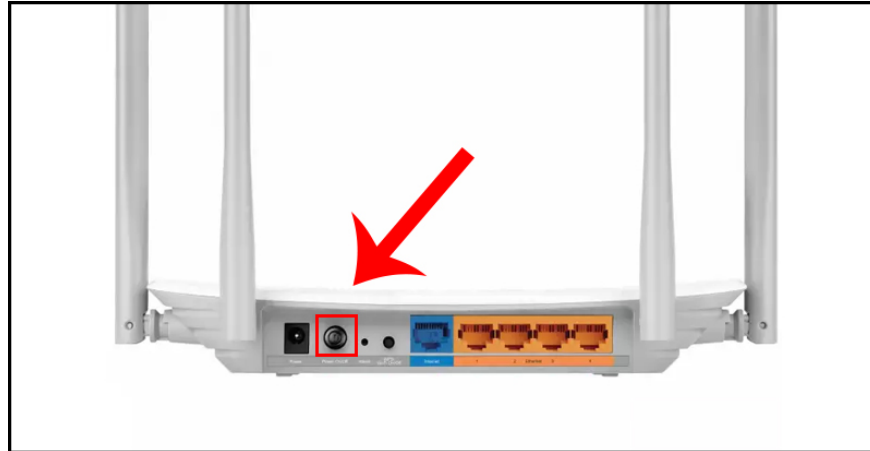


Step 3: Continue to enter the words 'ipconfig'> Find the Default Gateway item.



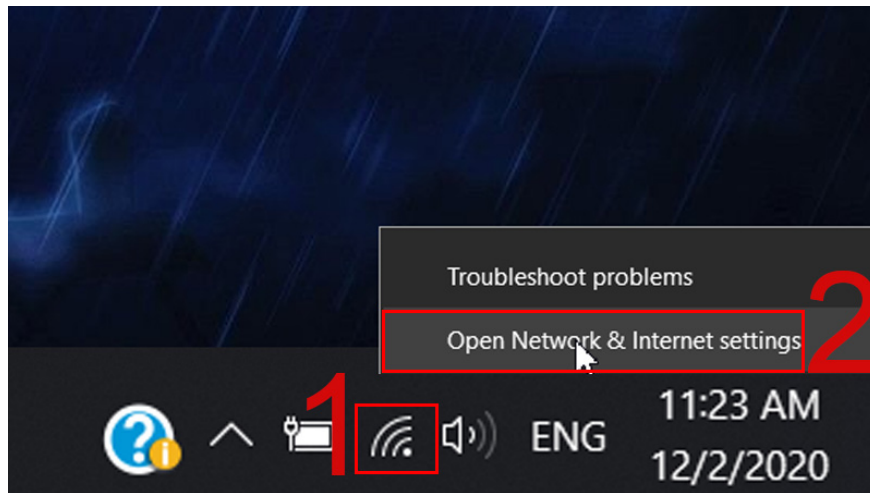
- Method 2: Turn on the Router

Use your hand to press the power button behind the Router to turn off the device and then wait about 60 seconds to turn it on again.

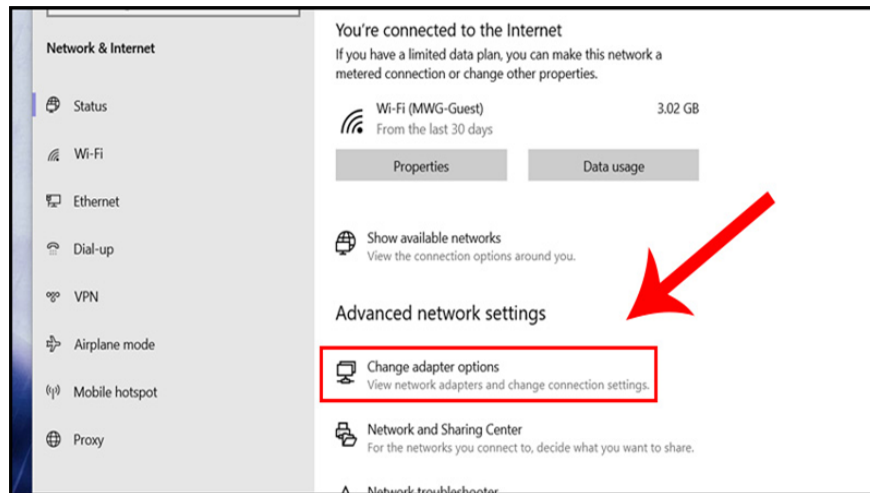


- Method 3: Activate the network card

Step 1: Right click on WiFi icon > Select 'Open Network And Sharing Center'.

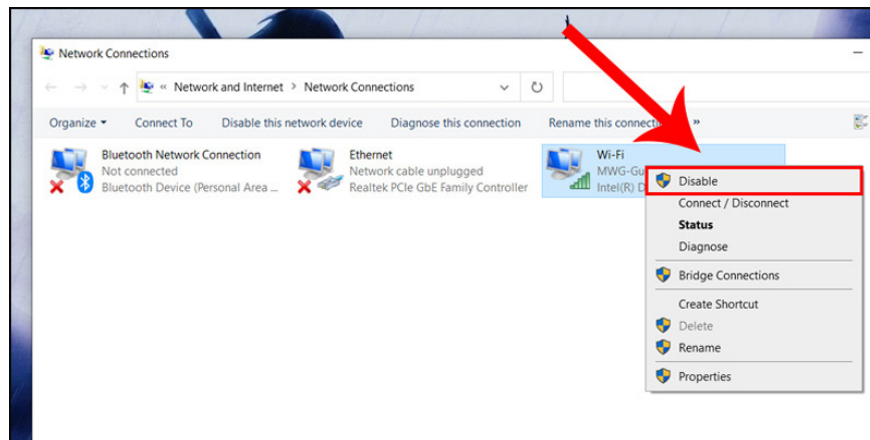


Step 2: Select Change Adapter Setting.



?

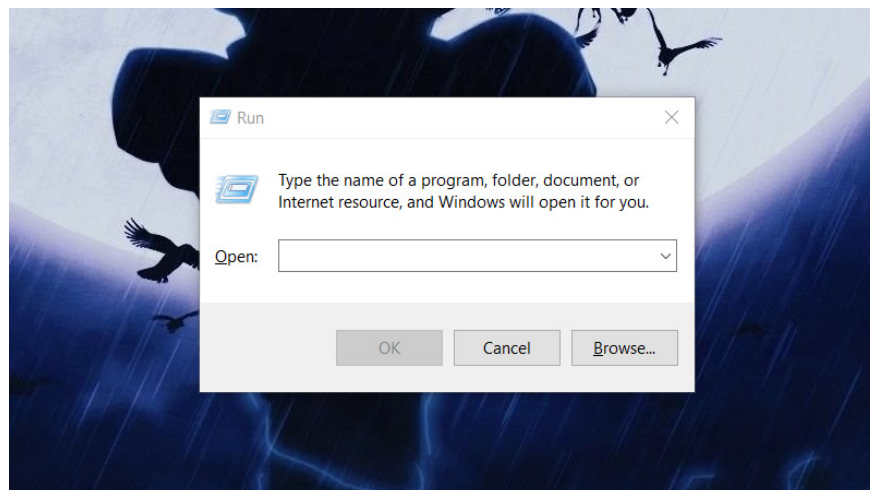
Step 3: Right-click on WiFi, select Disable (disable) to switch to Enable to enable the system



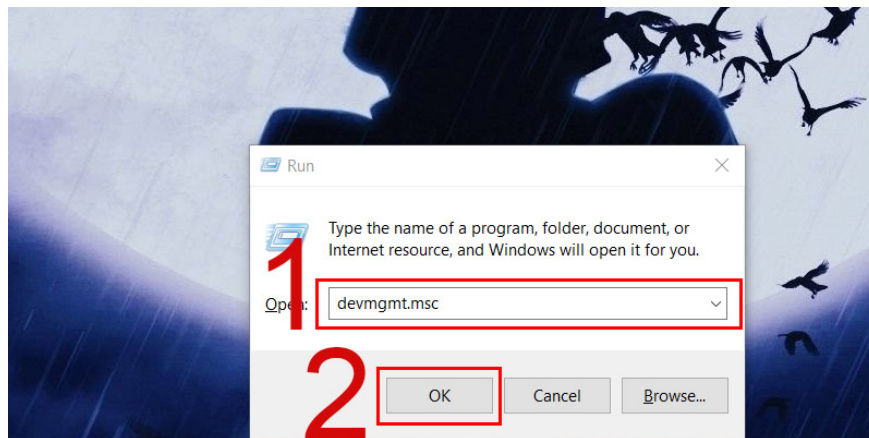
?

- Method 4: Update Network Driver

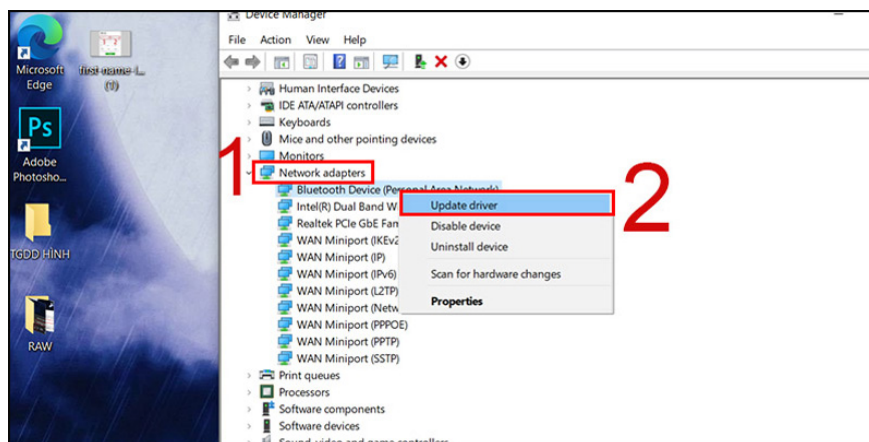
Step 1: Use the Windows + R key combination > Open the Run window.



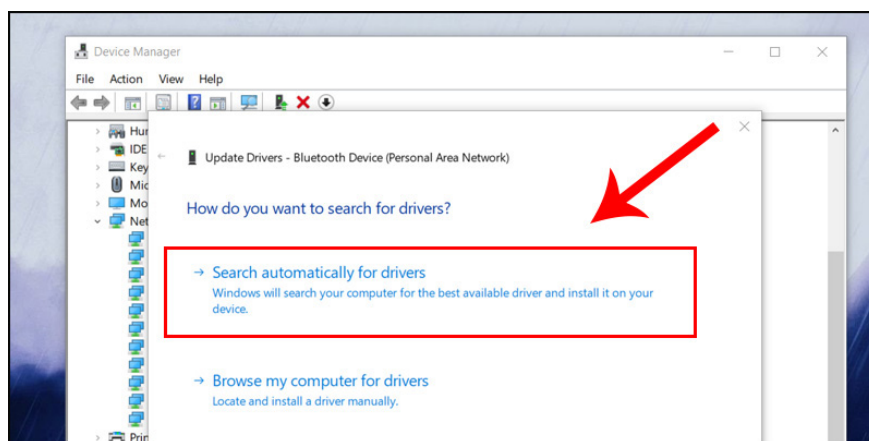
Step 2: Enter the command 'devmgmt.msc'> Click OK.



Step 3: Select Network adapters> Select Update driver.



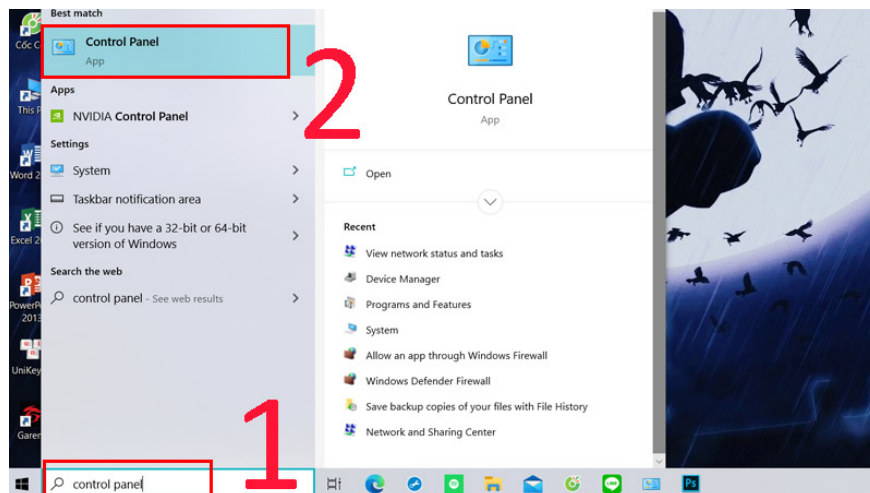
Step 4: Select Search automatically for drivers.



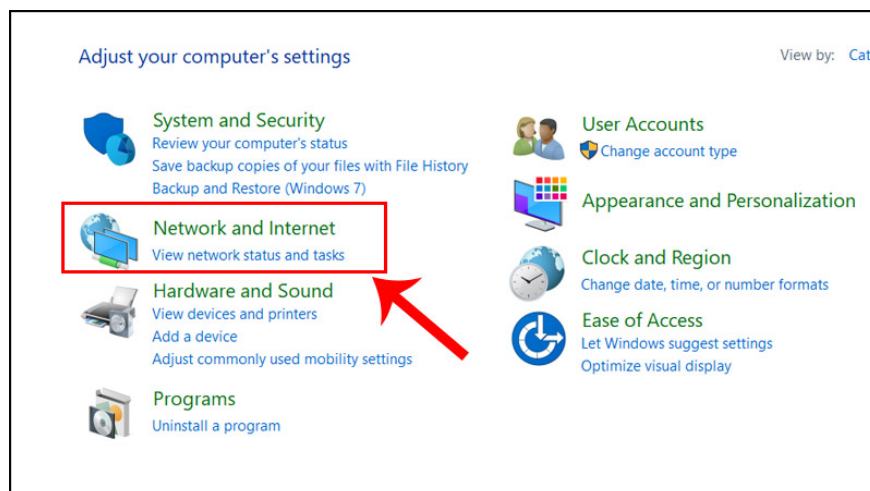
Step 5: Wait a few seconds and then do the same for the remaining network cards

- Method 5: Assign an address manually instead of using Windows

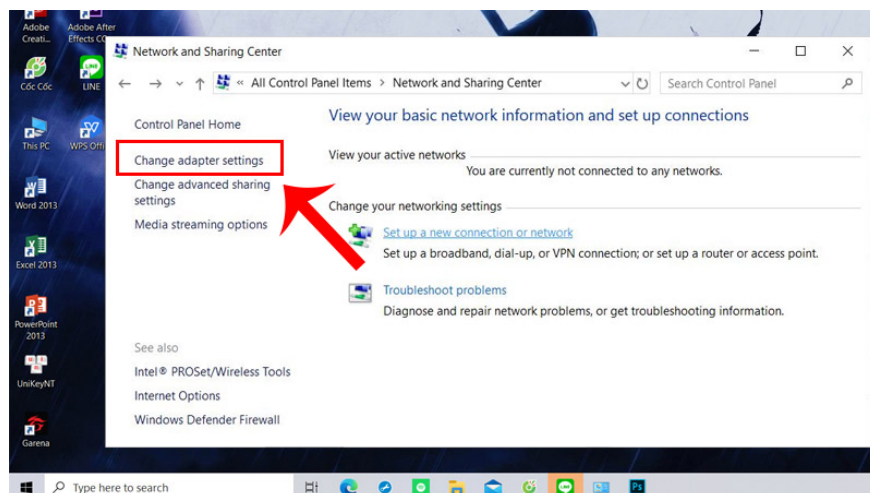
Step 1: Enter Control Panel in the search bar > Select Control Panel.



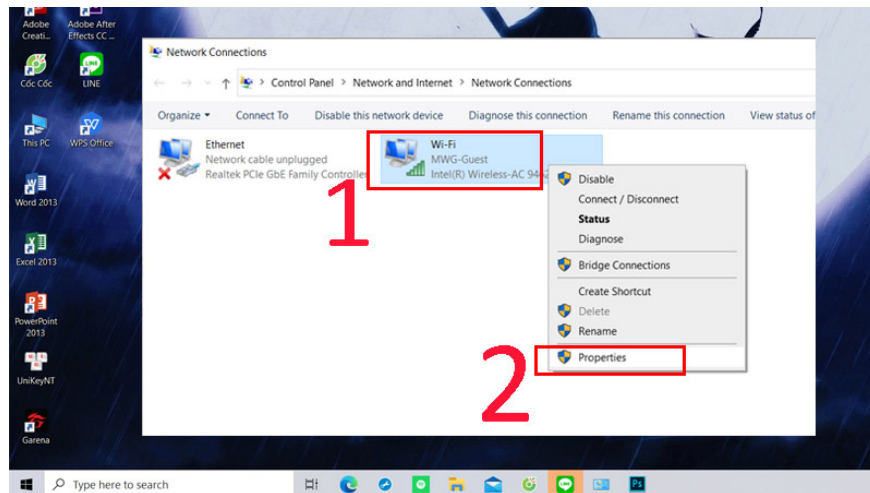
Step 2: Select Network and Internet.



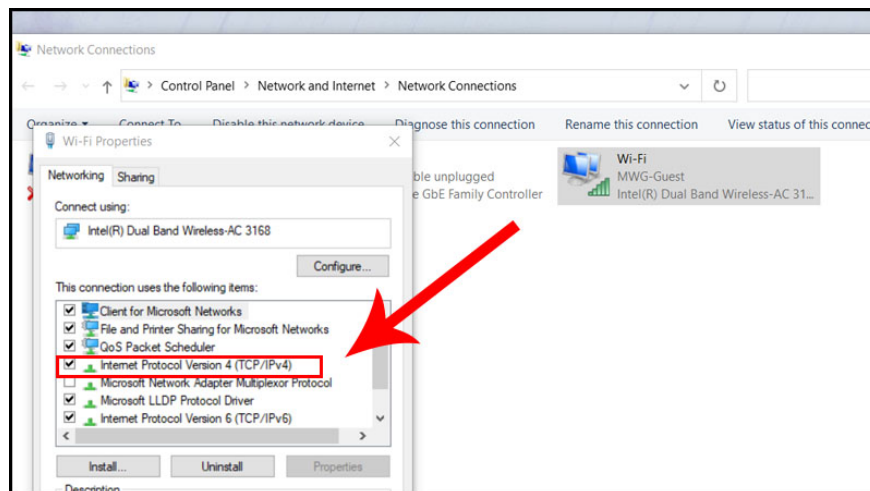
Step 3: Select Change adapter settings.



Step 4: Select the connecting Wi-Fi> Select Properties.



Step 5: Click on Internet Protocol Version 4 (TCP / IPv4).

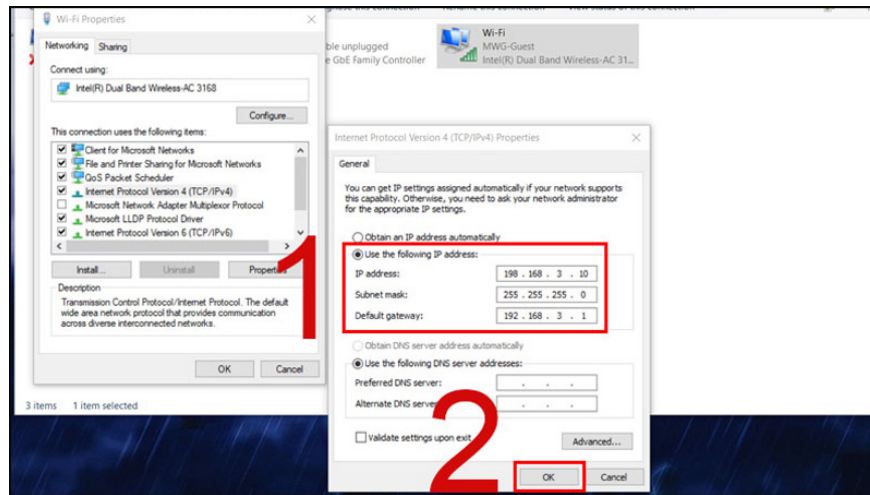


Step 6: Manually change the parameters according to the following form> Select OK.

IP address: 198. 168. 3. ten

Subnet mask: 255. 255. 255. 0

Default gateway: 192. 168. 3. first



??

4. Some advice when accessing 192.168.1.1

When you cannot access the 192.168.1.1 page, the first thing you should do is reset the modem hardware to reset the system. If you don't see results, try the next few methods to avoid wasting time.

If you do not have understanding of how to reset the Modem users should seek the help of the carriers you have registered to use.

Know the IP details of the Modem you use. Because this is important information that determines the results of Home Gateway error recovery.

You finished reading the article "**The cause and how to fix the error is not accessible 192.168.1.1**" edited by the [TipsMake](#) team. We hope this article has provided you with many useful tech tips and tricks. You can search for similar articles on tips and guides. Thank you for reading and for following us regularly.