

# The 7 most common problems in Internet Explorer

Sometimes you may find yourself in situations where you must use Internet Explorer. Let's take a look at quick fixes for common Internet Explorer issues so you don't have trouble experimenting with this old browser.

After being the subject of discussion for many years, Internet Explorer was almost forgotten. However, Microsoft still includes Internet Explorer 11 (final version) with Windows 10, for compatibility reasons.

However, sometimes you may find yourself in situations where you must use Internet Explorer. Let's take a look at quick fixes for common Internet Explorer issues so you don't have trouble experimenting with this old browser.

**Note** : Internet Explorer is not being actively developed anymore

Before you start working on Internet Explorer-specific issues and fixes, it's important to clarify the fact that, although Microsoft maintains IE on supported versions of Windows, Internet Explorer is an old browser. which the company is no longer actively developing. Due to the lack of modern features and old configuration, Internet Explorer 11 is increasingly insufficient for today's web browsing.

## Internet Explorer and some common problems

1. 1. Basic IE troubleshooting: Updates have not been installed
2. 2. Could not find Internet Explorer
3. 3. Error 404 in Internet Explorer
4. 4. Internet Explorer has encountered a problem, freezes or hangs
  1. Troubleshoot performance
5. 5. Issues displayed on Internet Explorer
6. 6. Video does not play in Internet Explorer
7. 7. Can't view any image in Internet Explorer

### 1. Basic IE troubleshooting: Updates have not been installed



### Check for Internet Explorer updates

As mentioned, Internet Explorer does not receive regular updates. However, in case Microsoft can fix a known issue with recent Internet Explorer, you should check for updates before starting to troubleshoot the problem.

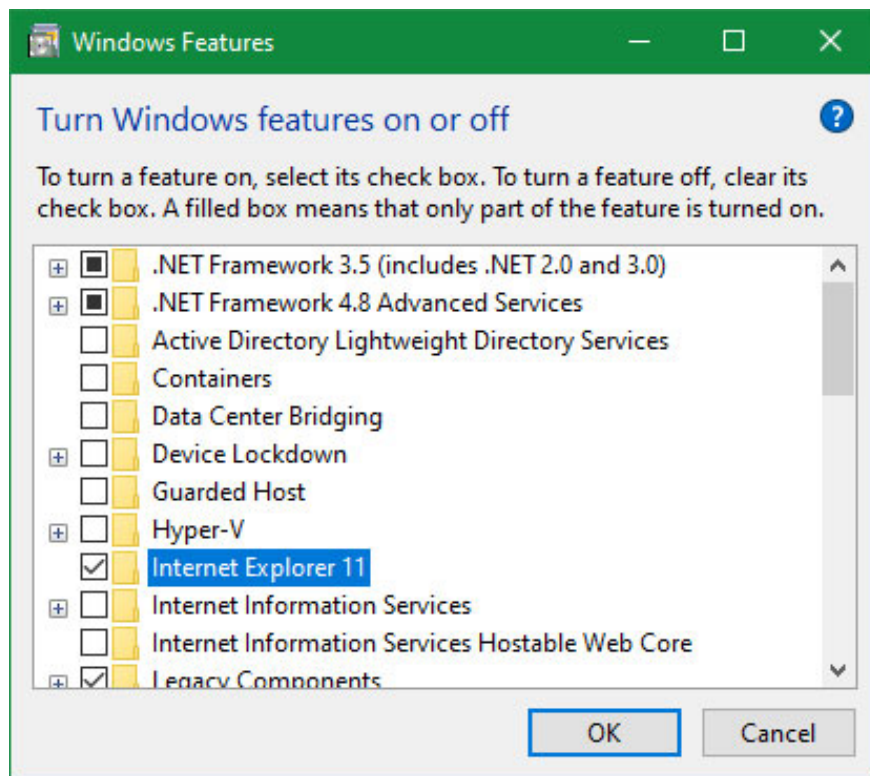
On Windows 10, the browser receives updates through Windows Update, as it is a component of the operating system. Go to **Settings> Update & Security> Windows Update** to check for the latest updates and apply any updates that appear here.

## 2. Could not find Internet Explorer

Internet Explorer comes with Windows 10 by default. To open it, just search Internet Explorer on the Start menu. If it doesn't appear there, press **Win+R** to open the **Run** box and type **ieexplore.exe**.

If you see an error message or Internet Explorer doesn't load, then it's likely that you (or another administrator on the computer) have disabled it. Perhaps they don't want anyone unnecessarily using the old browser.

To reactivate Internet Explorer, enter **Windows features** into the Start menu and select **Turn Windows features on or off**. In the list that appears, scroll down and check if Internet Explorer 11 is checked. Click **OK**, wait for the process to complete, then restart the PC.



Could not find Internet Explorer

### 3. Error 404 in Internet Explorer

A 404 error means that the page you are trying to access does not exist. Usually, this happens because you entered the wrong URL or clicked on a link that led to a 'dead' page. This is a rare problem with IE.

When this happens, press F5 to refresh the page and make sure it is not a temporary problem. If you enter the URL manually, double-check to confirm that you made no errors. After checking them, try searching for the page using Google.

If it does not appear when searching, the page probably no longer exists. Try accessing it from another browser or device like a phone. If it works, try clearing your browser's cache in IE.

### 4. Internet Explorer has encountered a problem, freezes or hangs

A lot of Internet Explorer problems arise due to poor performance. To resolve these issues, you should first run the **Internet Explorer Performance** troubleshooter .

To access, search the **control panel** in the Start menu. If you see **Category** at the top right, click here to change it to **Small icons** . Next, select **Troubleshooting > View all** in the upper left corner.

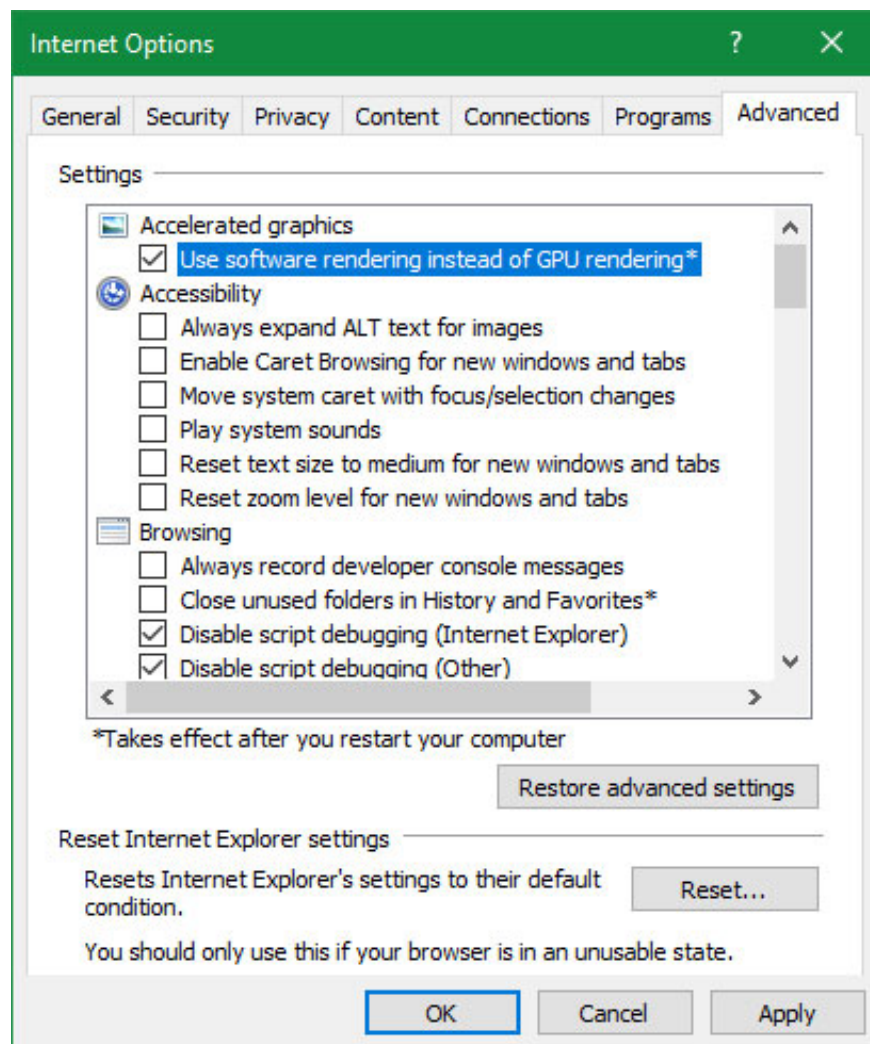
In the resulting menu, double-click **Internet Explorer Performance** . Before you begin, click on the **Advanced** link and select **Run as administrator** for the best results.

When the troubleshooter is complete, it will show you every action completed. Hopefully, these will resolve the issue with your Internet Explorer.

Changing the hardware acceleration feature may also help with these issues. This option uses a PC graphics card (instead of the CPU) to handle graphics-intensive tasks, such as video streaming.

In most cases, it's best to keep this feature enabled, but you can try switching to see if it makes a difference.

To switch, click the gear icon at the top right of Internet Explorer (representing the **Tools** menu ), then select **Internet options** . Select the **Advanced** tab at the top, then check the **Use software rendering instead of GPU rendering box** . Click **OK** , then you will need to restart your PC for the changes to take effect.

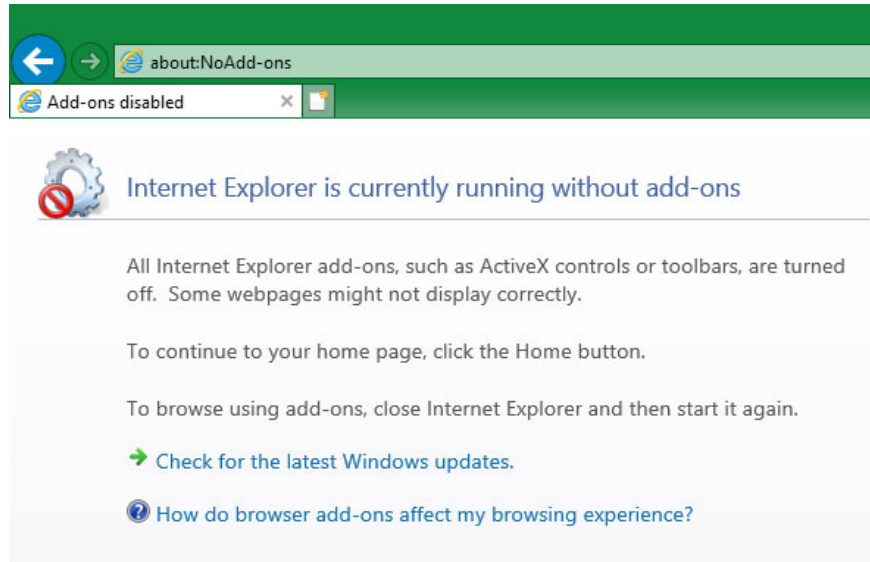


Check Use software rendering instead of GPU rendering

## Troubleshoot performance

Browser add-ons can often interfere with performance. Click the gear icon and select **Manage add-ons** to review the add-ons you have enabled and try turning off any add-ons you don't need. Alternatively, you can also run Internet Explorer without any add-ons, to see if that improves anything.

To do this, close all Internet Explorer windows first. Then press Win+ R to open the **Run** dialog box , enter **ieexplore.exe -extoff** and press Enter. See if IE works better without an extension.



Fix performance issues with add-ons

If all else fails, try resetting Internet Explorer completely. This sets everything back to the default state. Before proceeding, you should save everything you want to keep from Internet Explorer, such as backing up bookmarks.

To reset IE, go to **Tools> Internet options> Advanced** and click the **Reset** button at the bottom. The process will reset all your settings, but not delete personal content such as your homepage, history and saved form data.

Check the **Delete personal settings** box if you also want to delete these content.

After you click **Reset** , you will need to restart the computer for the changes to take effect.

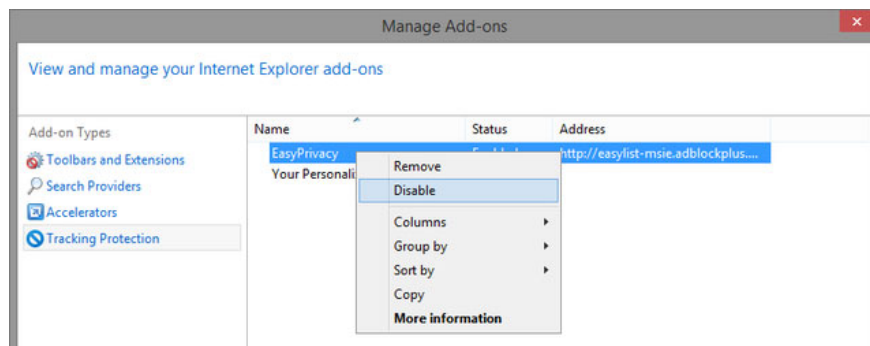
## 5. Issues displayed on Internet Explorer

If a webpage displays not what you expect, such as a blank page, images do not appear, text is corrupted or cluttered, menus are missing, there may be some compatibility issues between IE and webpage.

This can often happen due to **Compatibility View** , a feature designed to help display webpages built for older versions of IE. To check, click **Compatibility View settings** from the **Tools** menu . The current web page will display in the **Add this website** box ; Click **Add** to display it with **Compatibility View**.

If the site has a display problem and is in the **Compatibility View** list , click it and select **Remove**. You never need to use Compatibility View unless a website was built specifically for IE 8 and earlier (this is very rare nowadays).

Internet Explorer's **Tracking Protection** feature , which helps to reduce website tracking for privacy, can also interfere with content. To turn off **Tracking Protection** , select **Manage add-ons** from the **Tools** menu . Select **Tracking Protection** from the left sidebar, then right-click each item in the list and select **Disable**.



### Turn off Tracking Protection

You can also try clearing your browser's cache, as mentioned above. Display problems can also be caused by hardware acceleration as mentioned earlier. Try enabling that setting if you haven't already.

## 6. Video does not play in Internet Explorer

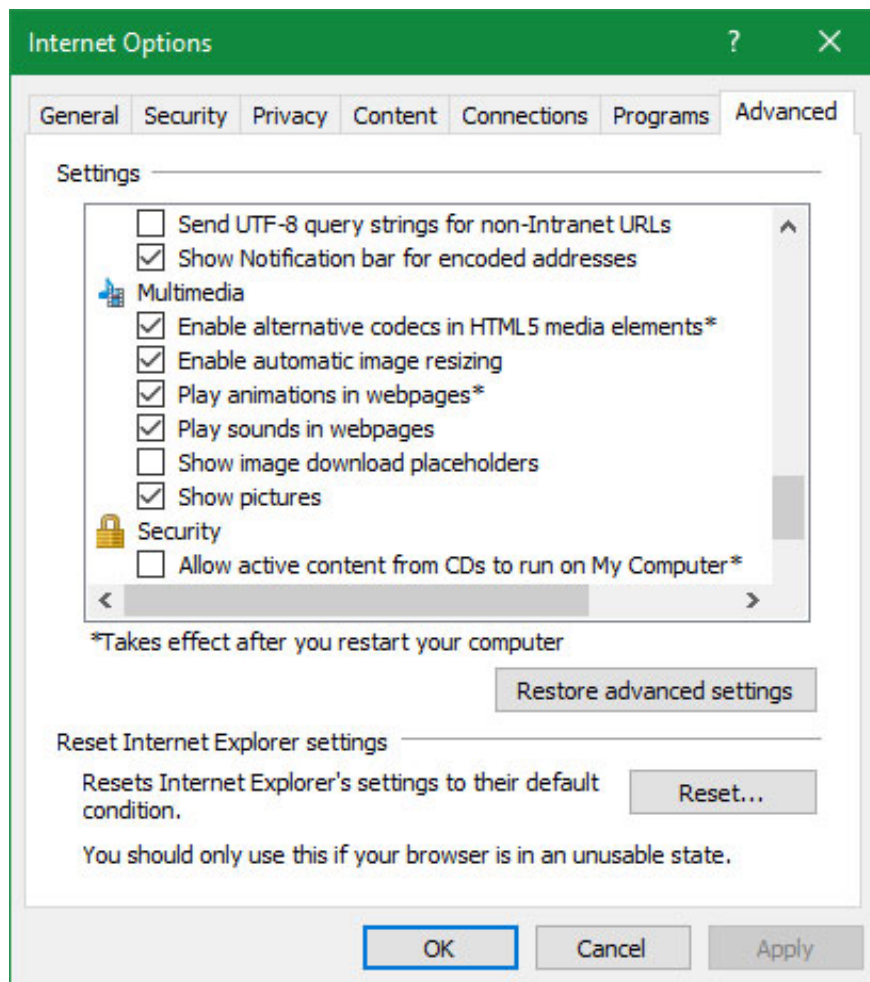
If you can't make a video play in IE, try using a different browser. Most videos today use HTML5, which works in every modern browser. When a particular video doesn't open, it's probably based on a feature IE lacks.

If you really need to see it in IE, check the add-ons to see if there's a conflict, as described above.

## 7. Can't view any image in Internet Explorer

You can try all the previously mentioned solutions to fix this problem, such as Compatibility View, turn off Tracking Protection and delete temporary Internet files. However, there is actually a setting that disables all images in Internet Explorer. This is a simple fix if you have encountered this problem.

Browse to **Tools > Internet options > Advanced** . Scroll down to the **Multimedia** title and make sure **Show pictures** is selected.



Make sure Show pictures is selected

If this option is selected, you may want to reset Internet Explorer security settings. Once in **Internet options** , click on the **Security** tab and you'll see some of the other 'areas' above (most websites fall into the Internet area). Just click **Reset all zones to default level** and restart your PC to get everything back to normal.

If all of this fails, reset IE to the default settings as explained above.

You finished reading the article "**The 7 most common problems in Internet Explorer**" edited by the [TipsMake](#) team. We hope this article has provided you with many useful tech tips and tricks. You can search for similar articles on tips and guides. Thank you for reading and for following us regularly.