

TeraCopy - Software to accelerate copying, moving data

TeraCopy is known as a software that supports users to copy and move data with the fastest speed.

You often have to copy or move multiple files with data back and forth between partitions and folders on your hard drive. Copying and moving with the built-in feature of Windows is not worth mentioning if the file you need to handle is large in size, making processing time take a lot of time. So that applications that support copying and moving data have been written down to minimize this time. **TeraCopy** is known as a software that supports users to copy and move data with the fastest speed today.



Some key features of TeraCopy:

- Pause copying, moving whenever with a simple click.
- In the process of copying, moving data if **TeraCopy** detects corrupted files, the program will automatically ignore and send a notice to the user to check. After that, it will continue to proceed with other files so as not to affect the current copy and move process to avoid having to start again.
- File list : Create a list during copying, moving data to observe and control this job easily.
- Integrated into right-click **Menu** .
- Support Unicode to copy and move files with accented Vietnamese.

In this article, I will show you how to use **TeraCopy** through the following simple steps:

Step 1 : Your computer must have TeraCopy program, to use the latest version you can click here to download.

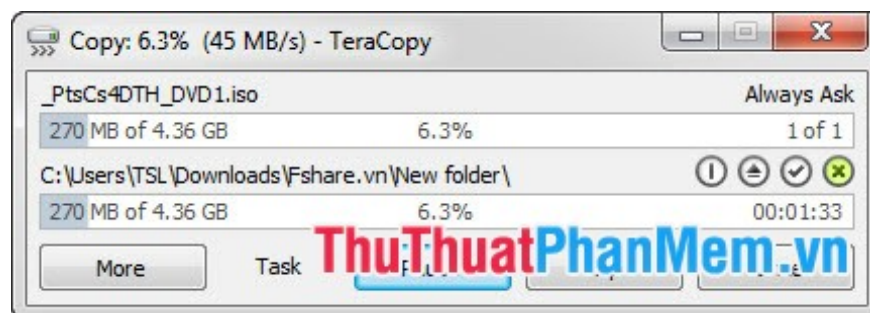
Step 2 : Install according to the instructions of the program.

Step 3 : Select a file or folder to copy or move. At this time, **TeraCopy** program will replace the normal copy and move functions of Windows. Choose where you want to copy, move to and then click **Start Now** to proceed with copying and moving files with **TeraCopy** .



Inside:

- **Pause**: Pause copying, moving.
- **Start**: Continue to make the copy, move after clicking **Pause** .
- **Skip**: Skip the current file, proceed to copy, move the next file.
- **Cancel**: Cancel the copy job, move the current data.
- **More**: When you click **More**, a notice will be displayed detailing the size, status of the file being copied and moved (applies to large files).



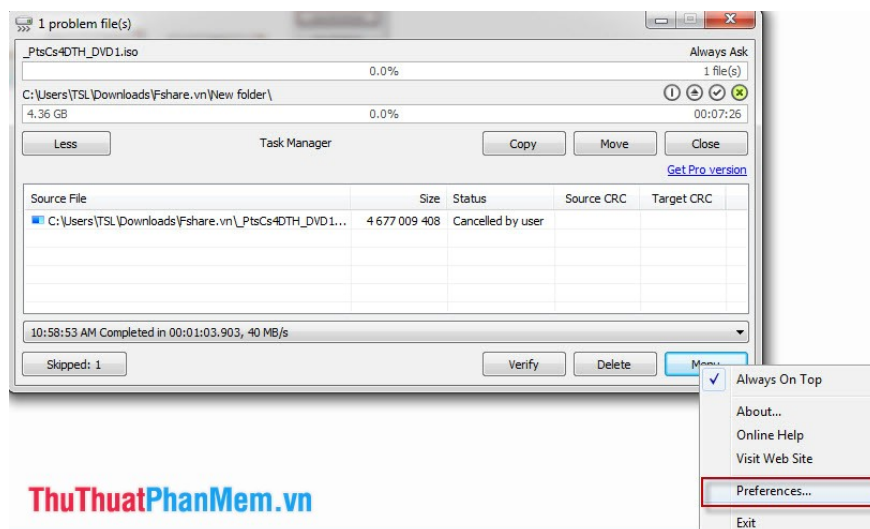
If you want to return to the default copy mode of Windows, press **Menu** -> **Preferences** and uncheck the *Use TeraCopy as default copy handler* .



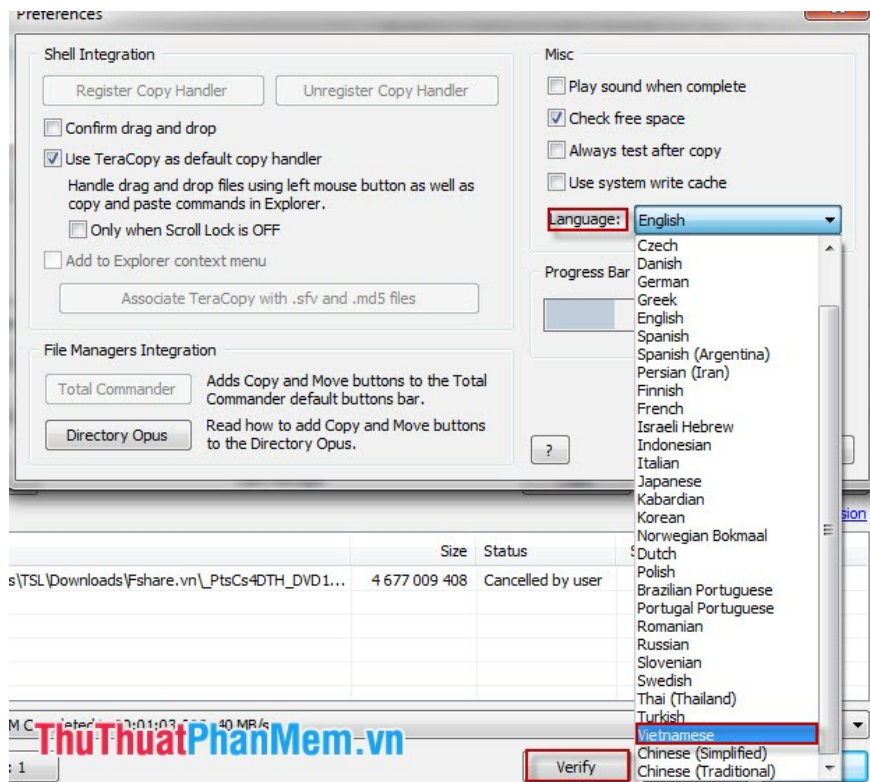
In the process of copying, moving if there is a duplicate file, the program will display the **File Already Exist** dialog box informed with the functions *Overwrite* (copy over), *All* (copy over the whole), *Older* (copy when the file is superimposed older), *Rename* (rename the file).

You can switch to the Vietnamese interface by:

1. Open the **TeraCoy** program (directly or indirectly).
2. Click **More** , select **Preferences** in the **Menu** .



3. In the **Preferences** dialog box in **Language** section select *Vietnamese* and click **OK** .



So we have TeraCopy interface in Vietnamese very simple.



You finished reading the article "**TeraCopy - Software to accelerate copying, moving data**" edited by the [TipsMake](#) team. We hope this article has provided you with many useful tech tips and tricks. You can search for similar articles on tips and guides. Thank you for reading and for following us regularly.