

Summary of ways to recover corrupted Excel files

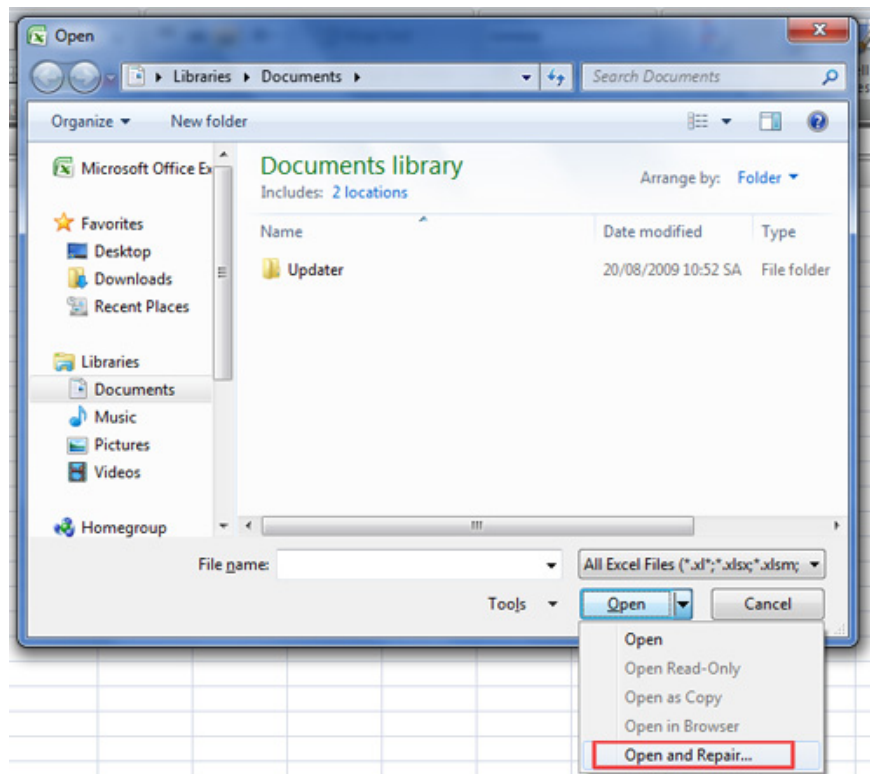
The Excel file is corrupted and cannot open the workbook, what should I do? Very simple. This article will provide you with ways to recover corrupted Excel files.

Excel spreadsheet files, as well as Word (especially for those who do a lot of office work and bookkeeping), once corrupted will cause a series of problems for users, because they contain a lot of numbers. important data and information. In the article below, TipsMake.com will introduce to you simple ways to recover **corrupted Excel files and spreadsheets** before thinking about. crying or starting over.

1. Try manual recovery:

If Excel's automatic error recovery feature is slow, you can do this manually:

1. Open the file from the **File** menu . For Excel 2007, click the **Office** button and select **Open** .
2. **Using the Look In** panel , find and identify the corrupted workbook.
3. **From the Open** button's drop-down list , select **Open And Repair**:



1. If this is your first attempt to restore the workbook, click **Repair** .

2. If you're lucky, **Excel** will repair the file. However, the file recovery feature is not always effective. At this point, you should choose the second solution which is data recovery. Click **Extract Data** in step 4.

2. Recover data from damaged workbook

2.1. If the error occurs while the spreadsheet file is open:

When an error occurs and the workbook file is still open, you must not save the current session. Instead, roll back to the previous archived version. This way, you will avoid the error that happened just now without losing data, even though this possibility is very small.

To return to the last saved session, follow these steps:

1. Select **Open** from the **File** menu. For , click the **Office** button and select **Open** .
2. Use the **Look In** panel to identify corrupted files.
3. Click **Open** .
4. At this point you will reopen the workbook as before.

2.2. Recover data when you cannot open a workbook in Excel:

1. Set Excel calculation options to manual. Try changing the calculation settings from automatic to manual. The workbook can be opened because it does not need to be recalculated.
 1. Click **File > New** .
 2. Under **New** , click **Blank workbook** .
 3. Click **File > Options** .
 4. In the **Formulas** section , under the **Calculation** option , select **Manual** , then click **OK** .
 5. Click **File > Open** .
 6. Locate and then double-click the damaged workbook to open it.
2. Use an external reference to link to the broken workbook. If you only want to get data and not formulas or calculated values ??from the workbook, try using an external reference to link to the broken workbook.
 1. Click **File > Open** .
 2. Go to the folder containing the damaged workbook.
 3. Right-click the file name of the damaged workbook, click **Copy** , and then click **Cancel** .
 4. Click **File > New** .
 5. Under **New** , click **Blank workbook** .
 6. In cell A1 of the new workbook, type **=File Name!A1** , where **File Name** is the name of the damaged workbook you copied in step 3, then press **Enter** . (**Note:** You only have to enter the name of the workbook and not the file name extension).
 7. **If the Update Values** ??dialog box appears, select the damaged workbook, then click **OK** .
 8. **If the Select Sheet** dialog box appears, select the appropriate sheet, and then click **OK** .
 9. Select cell **A1** .
 10. Click **Home > Copy** or press **Ctrl+C** .
 11. Select a range, starting from cell A1, approximately the same size as the range of cells containing data in the damaged workbook.
 12. Click **Home > Paste** or press **Ctrl+V** .
 13. With the cell range still selected, click **Home > Copy** again or press **Ctrl + C** .
 14. Click **Home >** the arrow below **Paste** , then under **Paste Values** , click **Values** .
 15. Pasting the values ??will remove the links to the broken workbook and leave only the data.

3. Use macros to extract data from damaged workbooks. If the chart associated with the workbook is corrupted, try using a macro to extract the chart's source data.
 1. Copy the following macro code and paste it into the module panel:

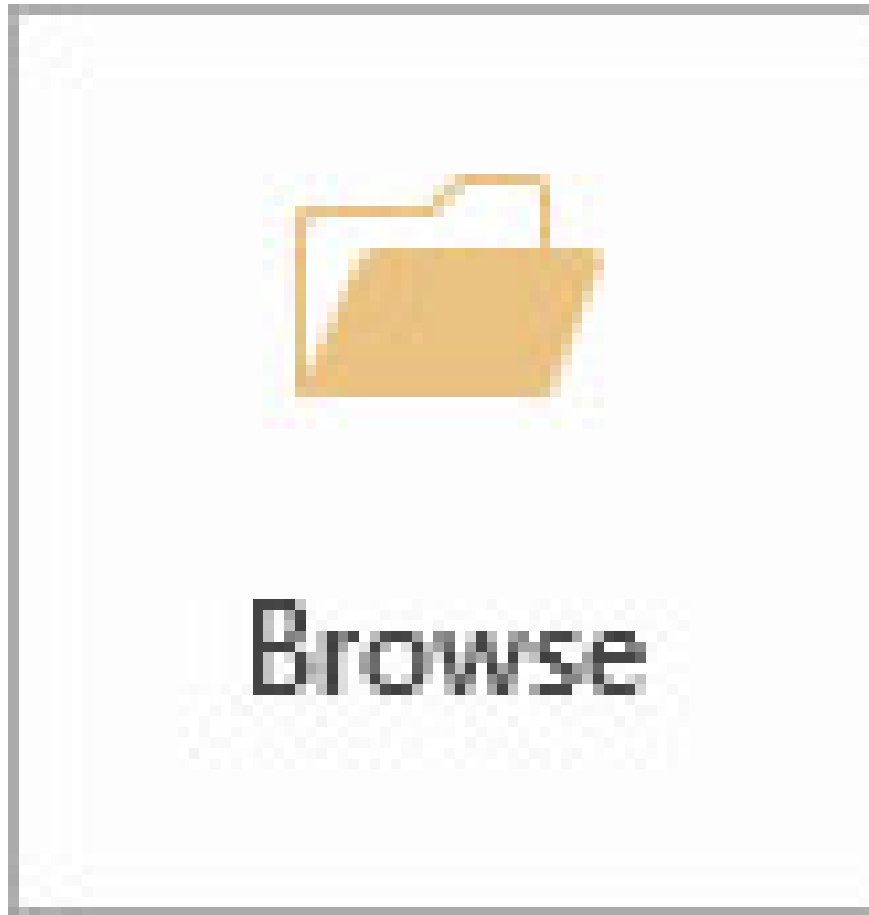
```
Sub GetChartValues()  
Dim NumberOfRows As Integer  
Dim X As Object  
Counter = 2  
' Calculate the number of rows of data.  
NumberOfRows = UBound(ActiveChart.SeriesCollection(1).Values)  
Worksheets("ChartData").Cells(1, 1) = "X Values"  
' Write x-axis values ??to worksheet.  
With Worksheets("ChartData")  
.Range(.Cells(2, 1), _  
.Cells(NumberOfRows + 1, 1)) = _  
Application.Transpose(ActiveChart.SeriesCollection(1).XValues)  
End With  
' Loop through all series in the chart and write their values ??to  
' the worksheet.  
For Each X In ActiveChart.SeriesCollection  
Worksheets("ChartData").Cells(1,  
Counter )  
=  
Counter)) = _  
Application.Transpose(X.Values)  
End With  
Counter = Counter + 1  
Next  
End Sub
```

To insert or delete a worksheet in a workbook, right-click the worksheet, and then rename it **ChartData** . Select the chart you want to extract basic data values ??from. **Note:** The chart can be embedded in a worksheet or on a separate chart > run macro > Data from the chart is placed on the **ChartData** worksheet .

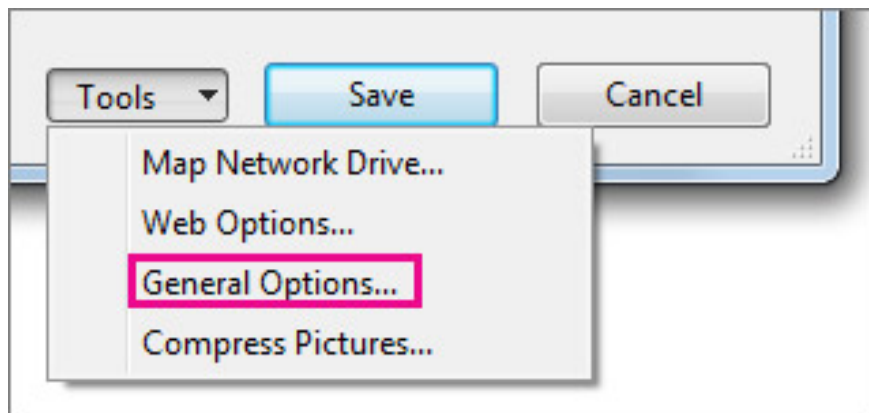
2.3. Automatically save backup copies of workbooks

With a workbook backup, you will always have access to your data if your workbook is accidentally deleted or damaged.

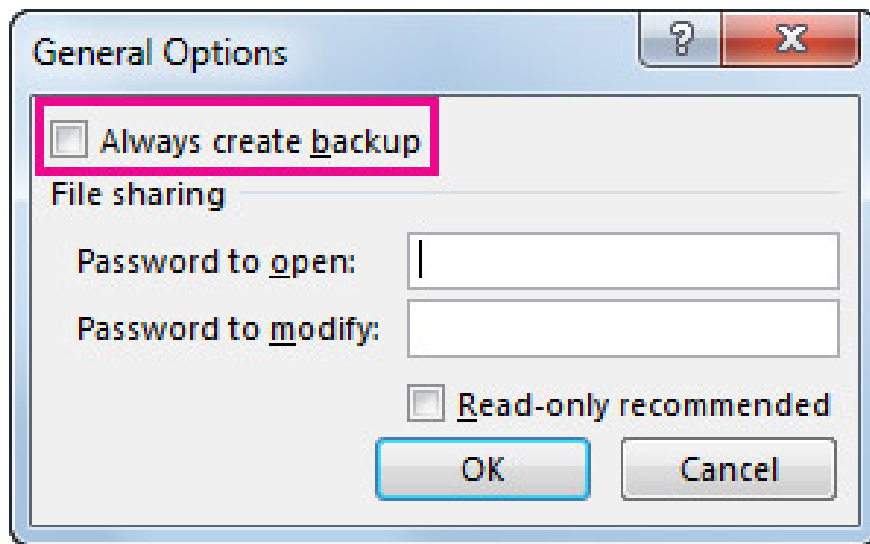
1. Click **File > Save As** .
2. Click **Computer** , and then click the **Browse** button .



3. In the **Save As** dialog box , click the arrow next to **Tools** , then click **General Options** .



4. In the **General Options** dialog box , select **Always create backup** .

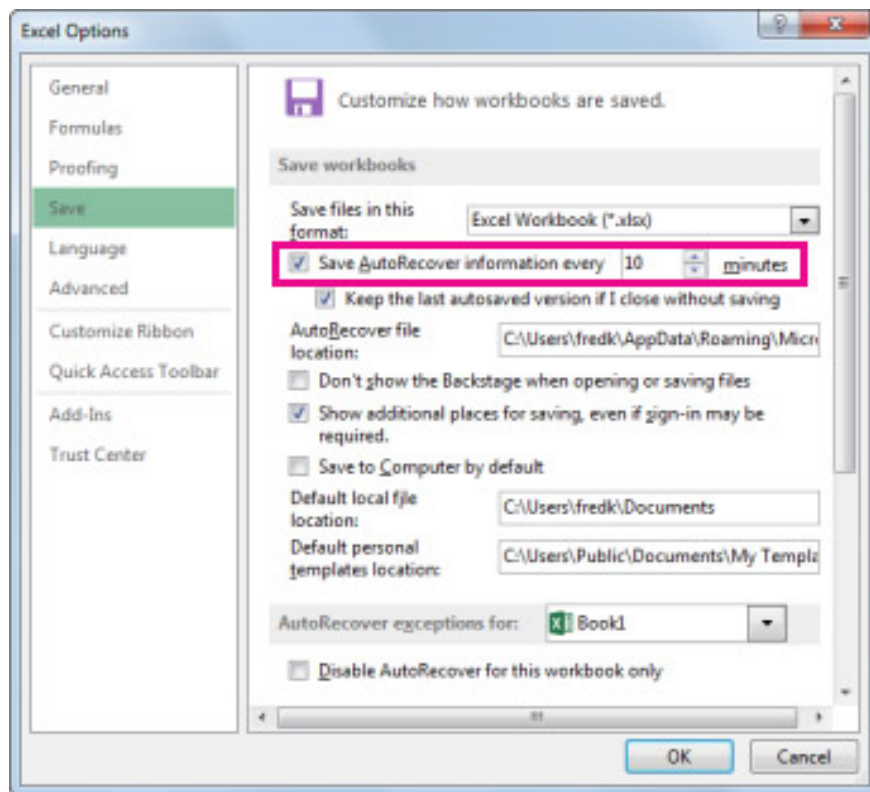


2.4. Automatically create recovery files within the set time period

A worksheet recovery file also helps ensure you will have access to your data if your workbook is accidentally deleted or damaged.

1. Click **File > Options** .

2. In the **Save** section , under **Save workbooks** , select **Save AutoRecover information every box** , then enter the number of minutes. (Default is 10).



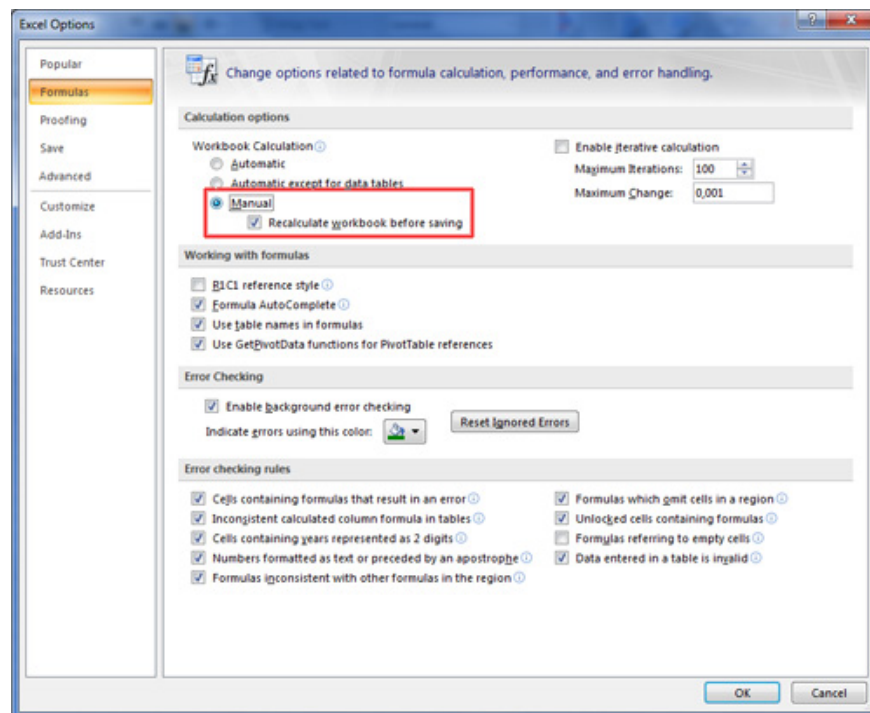
3. In the **AutoRecover file location** box , enter the location where you want to save the recovery file.

4. Make sure **Disable AutoRecover for this workbook only** is not selected.

3. Turn off automatic calculation mode

If Excel cannot open the spreadsheet file, or even the **Open And Repair** option fails, reset the calculation mode to manual processing and try again. Steps:

1. Open a new spreadsheet file with empty content.
2. From the **Tools** menu select **Options** and click on the **Calculation** tab . In Excel 2007, click the **Office** button , followed by **Excel Options** and select **Formulas** on the left panel.
3. In the parameter settings for **Calculation** (**Calculation Options** on Excel 2007), select **Manual** .
4. Click **OK** .



At this point, please reopen the corrupted file. It is possible that Excel will 'catch the error' and open the problematic file.

4. Use Microsoft Office Tools

If Excel cannot open the error workbook file, give **Microsoft Office Tools a chance**. Usage is as follows:

1. From the **Start** menu , select **All Programs** (on Windows XP).
2. Select **Microsoft Office** .
3. Select **Microsoft Office Tools** .
4. Select **Microsoft Office Application Recovery** .
5. Select **Microsoft Office Excel** in the dialog box.
6. Click **Recover Application** . Processing may take a few minutes.

This recovery tool will shut down Excel and then restart it, displaying a list of recovered spreadsheet files. If you're lucky, your precious Excel file will be on this list. Just open it and keep using it!

5. Try moving the file somewhere else:

Sometimes a spreadsheet file is corrupted not necessarily due to software reasons or user mistakes when using it. It's very likely that it's temporarily inaccessible; network systems and servers often mark them as corrupt files. In case you encounter an error that is determined to have a similar cause and Excel cannot fix it, move the file to another folder, drive, or server.

6. Let OpenOffice 'take action'

Some people claim to be completely surprised with the satisfactory results when using the OpenOffice application suite to repair corrupted Excel files. This is a famous free and open source tool. If you can't handle the corrupted spreadsheet file on Excel, use **OpenOffice** 's **Calc** . Of course, this is often more laborious and complicated than you think.



7. Open the error file on WordPad or Word

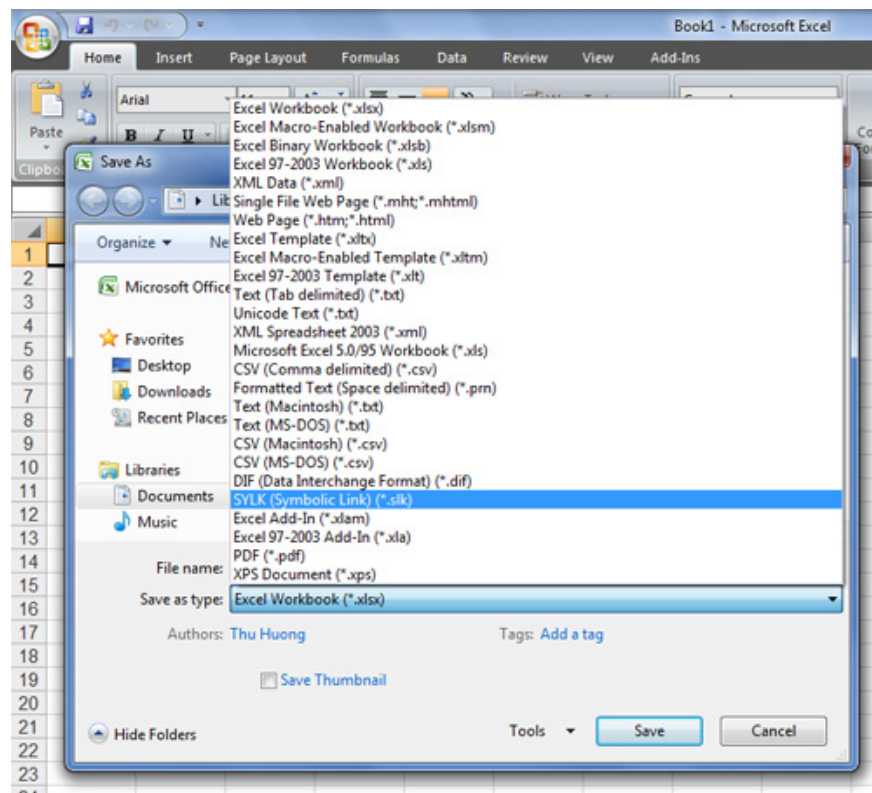
If you can't fix the corrupted spreadsheet file, try opening it in WordPad. If successful, WordPad will convert everything to text. Of course, this doesn't necessarily make you completely satisfied other than the joy of being able to get your data back. This option will not be able to recover font formats, tables. However, unlike some other data recovery options, WordPad will help you recover macros. Use the Sub and Function search commands on the recovered data block to find them.

You can also open the corrupted .xls file in Word, but the results are usually quite limited. With this option, you must install the Microsoft Office Excel conversion tool. Unlike WordPad, Word cannot restore macros.

8. Handle corrupted data cells to restore data

Sometimes you can recover data by processing the cells on the corrupted file. You won't be able to get back the formatting, charts, macros. but recovering the data is also a blessing. The procedure is as follows:

1. Open a new workbook, enter in cell A1 the following formula to get to cell A1 in the error file: ***name of error file !A1*** . (You don't need to add .xls).
2. Click **Enter** .
3. If the error file is not in the same folder, Excel displays the **Update Values:** name of the error file dialog box. Use the **Look In** panel to identify corrupted files. Select this file and click **OK** .
4. **If the Select Sheet** dialog box appears, select the appropriate sheet and click **OK** . Excel will display the value of cell A1 of the error file.
5. Select cell A1 and drag across the columns you feel are necessary to be able to restore the data. If Excel displays the **Update Values** ??- error file name dialog box, select the error file and click **OK** .
6. Repeat step 5, duplicating row A to the number of rows you feel is enough to recover the corrupted file.
7. Select the data and click **Copy** from the **Edit** menu .
8. Select **Paste Special** from the **Edit** menu , select **Values** .
9. Click **OK** .
10. Try **SYLK** format to recover data:



Switching to another format is a quite effective solution when Excel fails

Microsoft recommends using the **SYLK** format to avoid errors when using Excel, especially printer-related errors. You can open the corrupted Excel file this way:

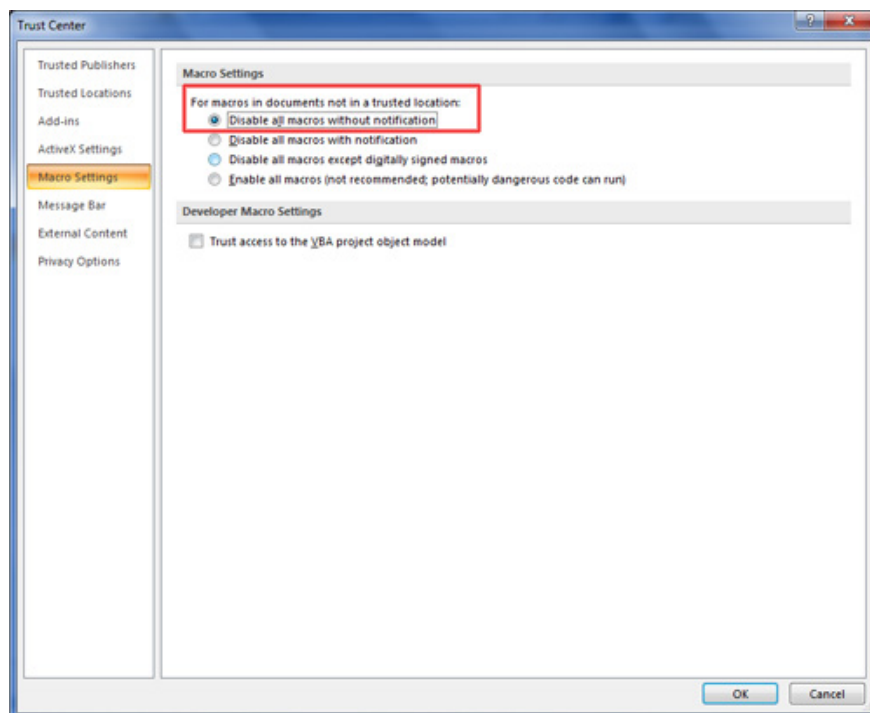
1. From the File menu, select **Save As** . On Excel 2007, click the **Office** button .
 2. **From the Save As Type** panel , select **SYLK(Symbolic Link) (*.slk)** .
 3. To name. If the error file has one sheet, this is not necessary.
 4. Click **Save** .
 5. If the workbook file has multiple sheets, Excel will ask you whether to continue using a format that does not support multiple sheets at the same time. Click **OK** .
 6. If Excel warns you that your workbook may contain some format that is not compatible with SYLK, select **Yes** .
1. **Note that the SYLK format only saves the sheets in use** . To restore data, you need to reopen the Excel file and save each sheet one by one. That's why in step 3 you need to name each sheet on the workbook to avoid confusion later.

After saving all the sheets in the new format, open the .slk file and edit it to .xls. Be careful not to use the name of the corrupted workbook file. If successful, you can save the values ??from the entered formula but not the formulas.

10. Restore macros

If you can recover data but still have trouble dealing with macros, you can save them in the following way:

1. Open Excel, don't open error workbooks.
2. Set calculation mode to manual (tip 3 above).
3. Select **Macro** from the **Tools** menu , select **Security** , and then select **High** . In Excel 2007, click the **Office** button -> **Excel Options** , and select **Trust Center** on the left side of the table. Then, click on the **Trust Center Settings** button , select **Macro Settings** , then select **Disable All Macros Without Notification** on *the Macro Settings* settings area . Finally click **OK** twice:



1. Open the corrupted file. If Excel opens, you'll see a message stating that macros are currently disabled. If Excel turns off, this method is considered a failure.
2. Click [**Alt**]+[**F11**] to open *the Visual Basic Editor (VBE)* .
3. Using *Project Explorer* (click [**Ctrl**]+**R**), right click on the module and select **Export File**).
4. Enter the name and directory of the module.
5. Repeat steps 6 and 7 to your satisfaction, enough to extract all modules.
6. Close VBE and exit Excel.
7. Open an empty workbook (or a new workbook containing newly recovered data) and import the modules.

Ways to prevent workbook errors in Excel

Excel spreadsheets can become corrupted for many reasons, most of which you can avoid. The small but 'powerful' tips below will help you minimize the possibility of Excel workbook errors:

1. Always save an Excel document before closing it and avoid shutting down the system or restarting it when the Excel workbook is open.
2. Regularly scan Excel workbooks with reliable antivirus software.
3. Avoid connecting your laptop to a public network because it may contain malware that can harm computer files, including Excel workbooks. Similarly, do not plug your USB into a public computer to avoid being infected with malware.
4. Whether you're planning to install Excel plugins so they display beautifully on spreadsheets or save time performing tasks for your work, you should only install them from trusted sources and vendors.
5. Regularly back up Excel data to avoid losing important data.

Good luck!

You finished reading the article "**Summary of ways to recover corrupted Excel files**" edited by the [TipsMake](#) team. We hope this article has provided you with many useful tech tips and tricks. You can search for similar articles on tips and guides. Thank you for reading and for following us regularly.