

Summary of driver error codes on Windows and how to fix them (Part 1)

Drivers of hardware devices on the computer are used to communicate with the operating system. However, during the process of using the computer, the user encountered many problems, caused by driver error. For example, the driver error for this device may be corrupted, or h? th?ng có th? ch?y ???c ít nh?t trên b? nh? ho?c khác Resources. (Code 3),

Drivers of hardware devices on the computer are used to communicate with the operating system. However, during the process of using the computer, the user encountered many problems, caused by driver error. For example, the error " *The driver for this device might be corrupted, or your system may run low on memory or khác Resources (Code 3)* ", .

In the following article, Network Administrator will introduce you to the most common driver error codes and how to fix each error code one by one.



1. Error code 1 (code 1)

Thi?t b? này không ???c c?u hình correctly. (Code 1)

The cause of the error:

The device has not installed the driver on the computer or the driver is not configured properly.

Solutions:

To fix this, the best way is to update the driver.

On the device's Properties dialog box, click the Driver tab, then click Update Driver to open the Hardware Update Wizard. Follow the on-screen instructions to update the driver.

2. Error code 3 (code 3)

Ph?n m?m cho thi?t b? này có th? b? h?ng, ho?c h? th?ng này có th? ch?y ch?y trên b? nh? ho?c khác Resources. (Code 3)

Solution to fix errors:

- Close open applications

If your computer does not have enough memory to run the device, you can close applications that take up the most memory capacity to free up memory space. In addition, you can check memory and system resources and set up virtual memory.

To check system and memory resources, just open Task Manager to check. To do this, press **Ctrl + Alt + Delete** and click **Task Manager** .

To check virtual memory settings, open the System Properties dialog box and click on the **Advanced** tab, select **Settings** in the Performance section.

- Uninstall and reinstall the driver:

In some cases the cause of the error may be because the device driver has failed. If the driver fails, simply uninstall the driver from Device Manager, then find, download and reinstall the driver:

1. In the device's Properties dialog box, click the **Driver** tab , then click **Uninstall**, and follow the instructions on the screen.

2. Restart your computer.

3. Open Device Manager. Here, click **Action** , then click **Scan for hardware changes** then follow the instructions on the screen.

- Install more RAM

In addition, you can install more RAM to fix this error.

3. Error code 10 (code 10)

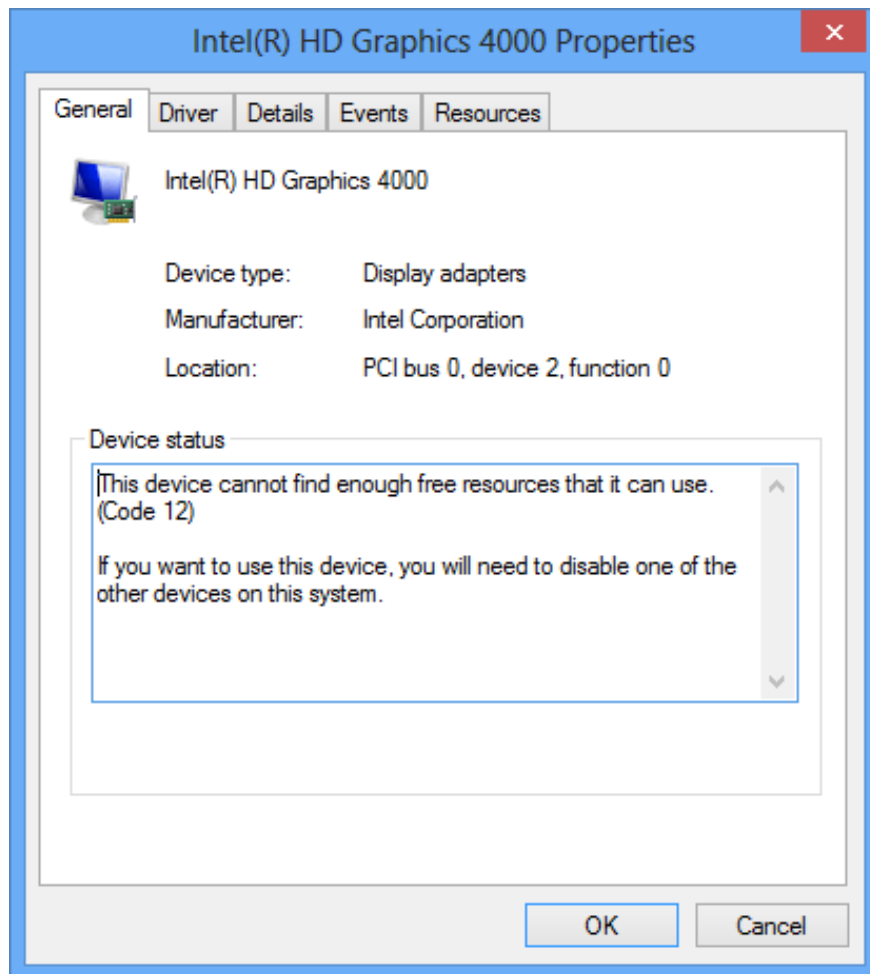
Thi?t b? này không th? b?t ??u. (Code 10)

Solution to fix errors:

- Update driver

On the device's Properties dialog box, click the **Driver** tab , then click **Update Driver** to open the Hardware Update Wizard. Follow the on-screen instructions to update the driver.

4. Error code 12 (code 12)



Thi?t b? này không tìm th?y ?? c? s? d? li?u mà không th? s? d?ng. N?u b?n mu?n s? d?ng thi?t b? này, b?n c?n c?n g? b? m?t c?a các thi?t b? khác này. (Code 12)

Causes of errors:

This error occurs when two devices installed on your computer are assigned values ??at the same I / O port, or the same Direct Memory Access channel (either BIOS, operating system, or both).

Also this error may appear if the BIOS does not allocate enough power to your device.

Solutions:

You can use the Troubleshooting Wizard on Device Manager to locate the conflict, and then disable the conflicting devices.

Use the Troubleshooting Wizard to disable conflicting devices:

1. On the device's Properties dialog box, click the **General** tab.
2. Click **Troubleshoot** to open the Troubleshooting Wizard window. The wizard will ask you some simple questions and provide solutions for you based on the answers you provide.
3. Follow the steps in the solution provided by the Wizard to fix the problem you have.

5. Error code 14 (code 14)

Thi?t b? này không ???c làm vi?c ?úng cho b?n kh?i ???ng máy tính. (Code 14)

Fix solution: Restart your computer

Click **Start** , then select the **Shut Down** button. Now the screen appears Shut Down Windows, here you select **Restart** to restart your computer.

6. Error code 16 (code 16)

Windows không th? xác ???nh các dùng c? s? d? li?u này. (Code 16)

Causes of errors:

The device is only partially configured.

Remedy: Assign additional resources to the device

Note: This method only applies to devices that are Plug and Play only.

1. On the device's Properties dialog box, click the **Resources** tab.
2. If the source is listed with a question mark next to it, select the source to add to the device.

If the source cannot be changed, click **Change Settings** .

If the Change Settings option is not available, try removing the **Use automatic settings section** .



7. Error code 18 (code 18)

Reinstall the driver for this device. (Code 18)

Solutions:

Update the driver. If this doesn't work, reinstall the driver via Device Manager.

- Driver update:

On the device's Properties dialog box, click the **Driver** tab, then click **Update Driver** to open the Hardware Update Wizard. Follow the on-screen instructions to update the driver.

If this is not available, you should apply the solution to remove the driver and then reinstall the driver.

- Uninstall and reinstall the driver:

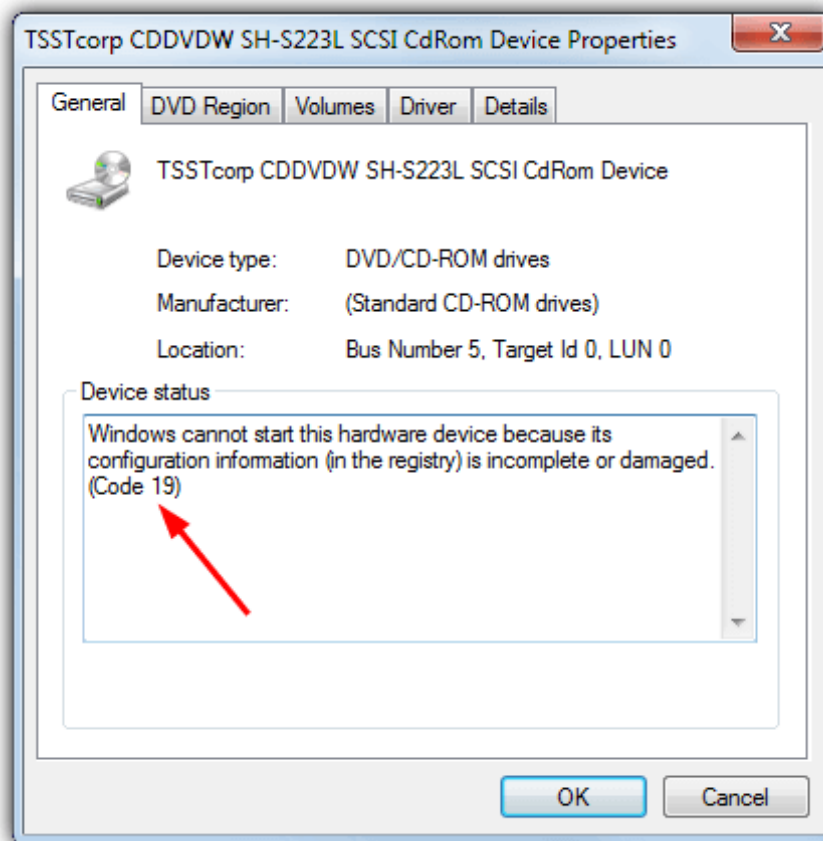
If the driver fails, the best way is to remove the driver on Device Manager, then find, download and reinstall the driver.

1. On the device's Properties dialog box, click the **Driver** tab, then click **Uninstall** and follow the instructions on the screen.
2. Restart your computer.
3. Open Device Manager. Here you click on **Action** and then select **Scan for hardware changes** and follow the instructions on the screen.

8. Error code 19 (code 19)

Error Code 19 is one of the error codes related to **Device Manager**. This error is caused by one or more problems with parts of the **Windows Registry**, contains drivers and other information about specific hardware devices.

Error Code 19 will almost always be displayed in one of two ways:



Windows không b?t ??u thi?t b? thi?t b? này vì thông tin c?u hình (trong ??ng ký) là trongcomplete ho?c b? l?i. ?? làm vi?c này l?i, b?n có th? th? th? ch?y m?t Troubleshooting Wizard. N?u không có vi?c làm vi?c, b?n nên g? b? và ?ó reinstall các thi?t b? thi?t b?. (Code 19)

Windows không b?t ??u thi?t b? thi?t b? này vì thông tin c?u hình (trong ??ng ký) là trongcomplete ho?c b? l?i. Hãy th? l?i này, b?n nên g? b? và ?ó reinstall các thi?t b? thi?t b?. (Code 19)

Details of Device Manager error codes such as Code 19 are available in the **Device Status** area (located in **Device Properties**).

Important note : This error code is 'exclusive' in **Device Manager**. If you see Code 19 error anywhere else in Windows, chances are it is a system error code and you cannot fix it as a problem related to Device Manager.

Code Error 19 may occur for all hardware **devices** in **Device Manager**, but most Code 19 errors appear on optical drives such as DVD and CD drives, USB devices and keyboards.

Error Code 19 can also be found in any Microsoft operating system, including Windows 10, Windows 8, Windows 7, Windows Vista, Windows XP, etc.

Causes of errors:

Registry error detected.

Solutions:

Method 1 : Restart the computer if you have not done this already. It is possible that the Code 19 error you see is caused by a temporary problem. If so, a simple restart operation can fix Code 19.

Method 2 : Did you install the device or make any changes in **Device Manager** just before the Code 19 error? If so, it is likely that the change you made is the cause of the Code 19 error. Undo the change if possible, restart the PC and then check if the Code 19 error also appears.

Depending on the changes you have made, some solutions may be:

1. Remove or reconfigure newly installed devices.
2. Restore the registry changes made.
3. Return the driver to the version before updating.

*** Restore the latest Registry configuration:**

The Last Known Good Configuration feature is a recovery option that you can use to boot your computer using the most recent operating settings.

The Known Good Configuration feature at the end restores all the registration information settings and the driver has taken effect the last time that the computer started successfully.

The Last Known Good Configuration feature stores all Registry and Driver installation information the last time the computer successfully boots.

Method 3 : Delete the **UpperFilters** and **LowerFilters** registry values . A common cause of Code 19 error is because these two registry values have problems in the **DVD / CD-ROM Drive Class** registry key.

Method 4 : Removing the same values in the Windows Registry can also be a way to fix the Code 19 error that appears on other hardware devices, in addition to the DVD / CD drive.

Method 5 : Uninstall iTunes via Control Panel or with the program uninstaller. Although this seems a bit drastic, there are enough reasons to put iTunes into this Code 19 troubleshooting guide.

If iTunes removal works, you can try installing again from scratch. Reinstalling iTunes does not always cause the problem to reappear.

Method 6 : Reinstall the driver for the device. Uninstalling and then reinstalling the driver for the device with Code 19 error is one of the solutions to overcome this problem.

*** Uninstall and reinstall the driver:**

Uninstall the driver on Device Manager, then find, download and reinstall the driver.

1. On the device's Properties dialog box, click the **Driver** tab, then click **Uninstall** and follow the instructions on the screen.

2. Restart your computer.

3. Open Device Manager. Here you click on **Action** and then select **Scan for hardware changes** and follow the instructions on the screen.

Note : Reinstall the driver properly, as in the instructions linked above, unlike driver updates. Reinstall the complete driver including deleting the currently installed driver and then allow Windows to reinstall the driver from scratch.

Method 7 : Use System Restore to revert the device driver and configure the registry back to the status before Code 19. Be sure to select the restore point from the date and time before you know or suspect that the Code 19 error occurred. show for the first time.

Method 8 : Disable any hardware-based security of the device. Windows can report Code Error 19 on the device as an external hard drive, if the previous drive is secured with a password.

Method 9 : Replace hardware. As a last resort, you may need to replace hardware with error Code 19.

An error may also occur because the device is not compatible with this version of Windows. You can check Windows HCL to be sure.

Note : If you find that hardware is not the cause of this Code 19 error, you can let Windows automatically fix the problem. If this method doesn't work, try installing 'clean' Windows. You should not make one of the more aggressive options, before trying to replace the hardware, but you may have to do it, if there is no other way.

9. Error code 21 (code 21)

Windows is removing this device. (Code 21)

Solutions:

To fix this error, follow the steps below:

- Wait a few seconds, then press **F5** to update Device Manager.
- If you still cannot fix the error, then restart your computer.

Click **Start** , then select the Shut Down button. Now the screen appears Shut Down Windows, here you select **Restart** to restart your computer.

10. Error code 22 (code 22)

This device is not working properly. (Code 22)

Solutions:

Reactivate the device via Device Manager.

In the Device Manager window, click **Actions**, then click **Enable Device** to open Enable Device wizard. Next follow the on-screen instructions to fix the error.

11. Error code 24 (code 24)

Thiết bị này không có hiên thi, không làm việc được, hoặc không có quy định cài đặt nó. (Code 24)

Causes of errors:

The cause of the error is because the device is installed incorrectly. There may be a hardware error during the installation or a new driver must be installed.

Solutions:

Remove the device, then the error will disappear.

12. Error code 28 (code 28)

Những drivers cho thiết bị không được cài đặt. (Code 28)

Solution: Install the driver

On the device's Properties dialog box, click the **Driver** tab and then select **Update Update** to open the Hardware Update Wizard. Next, follow the on-screen instructions to install the driver.

13. Error code 29 (code 29)

Thiết bị này bị tắt vì thiết bị có sự cố liên quan không thể đưa ra cần thiết tài nguyên cần thiết. (Code 29)

Solutions:

Activate device on BIOS.

14. Error code 31 (code 31)

Thiết bị này không làm việc được vì Windows không thể nạp các thiết bị cần thiết cho thiết bị. (Code 31)

Solution: Update the driver

On the device's Properties dialog box, click the Driver tab and then select Update Update to open the Hardware Update Wizard. Next, follow the on-screen instructions to install the driver.

15. Error code 32 (code 32)

A (service) driver cho này thi?t b? ?ã ???c t?t. ?ã có th? h? tr? driver alternate ???c cung c?p này.
(Code 32)

Causes of errors:

Driver is disabled on the Registry.

Solutions:

Reinstall the device driver. If this still does not fix the error, you can change the device parameter format on the Registry.

- Uninstall and then reinstall the driver:

Uninstall the driver on Device Manager, then find, download and reinstall the driver.

1. On the device's Properties dialog box, click the **Driver** tab , then click **Uninstall** and follow the instructions on the screen.

2. Restart your computer.

3. Open Device Manager. Here you click on **Action** and then select **Scan for hardware changes** and follow the instructions on the screen.

- Change the Start type on the Registry:

The last way to fix this is to edit the Registry directly if the driver requires, or reinstall the driver, upgrade the driver. You can use Registry Editor to edit the Start Type in the Registry.

16. Error code 33 (code 33)

Windows không th? quy?t ???nh mà tài nguyên c?n thi?t cho này thi?t b? (Code 33)

Causes of errors :

The compilation process determines the type of source required by the device that has failed.

Solutions:

Hardware configuration. If the hardware configuration does not work, you should replace the new hardware.

Hardware configuration or replacement:

If you run the Troubleshooting Wizard and still fail to fix the hardware, configure or replace the hardware. Contact the hardware manufacturer for more information on how to configure or replace device hardware.

17. Error code 34 (code 34)

Windows không thể quy?t ?nh các thi?t l?p cho thi?t b? này. Hãy xác ?nh các gói c?n ?n v?i thi?t b? này và s? d?ng Tab Resource ?? ?t c?u hình. (Code 34)

Solution: Configure the device manually

The device will require manual configuration. You can contact the hardware manufacturer or refer to the hardware documentation for instructions on configuring the device manually.

After the device has been configured, you can use the Resources tab in Device Manager to configure resource settings on the Windows operating system.

18. Error code 35 (code 35)

H? th?ng h? th?ng c?a máy ph?c v? không th? bao g?m ?? thông tin thành công vi?c th?c hi?n và dùng thi?t b? này. ?? s? d?ng này thi?t b?, liên k?t máy tính manufacturer ?? l?y m?t firmware hay BIOS update. (Code 35)

Causes of errors:

The Multiprocessor System table (MPS), resource assignments for BIOS storage is missing on your device port and must be updated.

Solutions:

Contact the manufacturer to update the BIOS.

19. Error code 36 (code 36)

Thi?t b? này yêu c?u m?t liên k?t PCI, nh?ng c?u hình cho m?t An interrupt ISA (or vice versa). Hãy s? d?ng h? th?ng c?a máy ph?c v? ??t ch??ng trình ?? reconfigure cáciinterrupt cho này thi?t b?. (Code 36)

Solution: Change IRQ Reservations settings

You can use the BIOS setup tool to change IRQ Reservations settings (if available). The BIOS also has options to store certain IRQs for Peripheral Component Interconnect (PCI) or ISA devices.

20. Error code 37 (code 37)

Windows không thể tải trình điều khiển thiết bị cho thiết bị này. (Code 37)

Solutions:

Uninstall and reinstall the Driver:

Uninstall the driver on Device Manager, then find, download and reinstall the driver.

1. On the device's Properties dialog box, click the **Driver** tab , then click **Uninstall** and follow the instructions on the screen.
2. Restart your computer.
3. Open Device Manager. Here you click on **Action** and then select **Scan for hardware changes** and follow the instructions on the screen.

21. Error code 38 (code 38)

Windows không nhận được thiết bị thiết bị cho phần này vì mã trình điều khiển thiết bị thiết bị là không trong bộ nhớ. (Code 38)

Solutions:

- Use the Troubleshooting Wizard:

1. On the Properties dialog box, click the **General** tab .
2. Click **Troubleshoot** to open the Troubleshooting Wizard. The wizard will ask you some simple questions and provide solutions for you based on the answers you provide.
3. Follow the steps in the solution provided by the Wizard to fix the problem you have.

- Restart your computer:

Click **Start** , then select the Shut Down button. Now the screen appears Shut Down Windows, here you select **Restart** to restart your computer.

22. Error code 39 (code 39)

Windows không nhận được driver khi thiết bị cho thiết bị này. Có lỗi driver bị hỏng hoặc thiếu.
(Code 39)

Causes of errors:

Some causes of error code 39:

- Device requires driver missing.
- Binary file error is corrupted.
- Issues related to files in I / O process .

Solution: Remove and then reinstall the driver

Uninstall the driver on Device Manager, then find, download and reinstall the driver.

1. On the device's Properties dialog box, click the **Driver** tab , then click **Uninstall** and follow the instructions on the screen.
2. Restart your computer.
3. Open Device Manager. Here you click on **Action** and then select **Scan for hardware changes** and follow the instructions on the screen.

23. Error code 41 (code 41)

Windows đã nhận được driver khi thiết bị cho phần mềm này, không tìm thấy thiết bị thiết bị. (Code 41)

Solutions:

This error occurs when you install the driver for a non Plug and Play device, but Windows cannot find the device. To fix this error, follow the steps below:

If using the Troubleshooting Wizard does not fix the error, you can apply one of the following solutions:

- If the device has been removed, uninstall the driver, connect the device, then click **Scan for hardware changes** to reinstall the driver.
- If the hardware is not removed, the driver file will fail. In this case, you should update the driver from Device Manager.

On the Properties dialog box, click the **Driver** tab and then click **Update Driver** to open the Hardware Update Wizard and follow the instructions on the screen to update the driver.

- If your device is non-Plug and Play, you must install the latest driver version. To install non-Plug and Play devices, use the Add Hardware Wizard. Click **Start** , then click **Run** and enter **hdwwiz.cpl** in the Run command window.

24. Error code 42 (code 42)

Windows không n?p ???c thi?t b? thi?t b? cho thi?t b? này vì có m?t thi?t b? duplicate ???c ch?y trong h? th?ng (Code 42)

Fix solution: Restart your computer

Click **Start**, then select the Shut Down button. Now the screen appears Shut Down Windows, here you select **Restart** to restart your computer.

Refer to some of the following articles:

1. Instructions to fix Driver Power State Failure on Windows
1. Fix the 'This Device Can Perform Faster' error when connecting a USB device
1. 5 basic ways to update, update drivers for computers

Good luck!

You finished reading the article "**Summary of driver error codes on Windows and how to fix them (Part 1)**" edited by the [TipsMake](#) team. We hope this article has provided you with many useful tech tips and tricks. You can search for similar articles on tips and guides. Thank you for reading and for following us regularly.