

Summary of driver error codes on Windows and how to fix (Last part)

In the previous article, Network Administrator introduced some of the most common driver error codes on Windows operating systems, such as error code 1 (This device is not configured correctly), error code 12 (This device cannot find enough free resources that không th? s? d?ng. If b?n mu?n s? d?ng m?t thi?t b? này, you'll need to disable one of the other devices on this system), error code 14, error code 16, ... and solutions to fix each error.

In the previous article, Network Administrator introduced some of the most common driver error codes on Windows operating systems, such as error code 1 (*This device is not configured correctly*), error code 12 (*This device cannot find enough free resources that không th? s? d?ng. If b?n mu?n s? d?ng m?t thi?t b? này, you'll need to disable one of the other devices on this system*), error code 14, error code 16, . and solutions to fix each error.

In the following article, the Network Administrator will introduce you to the remaining driver error codes and how to fix the error codes. Please refer to the following article of Network Administrator.



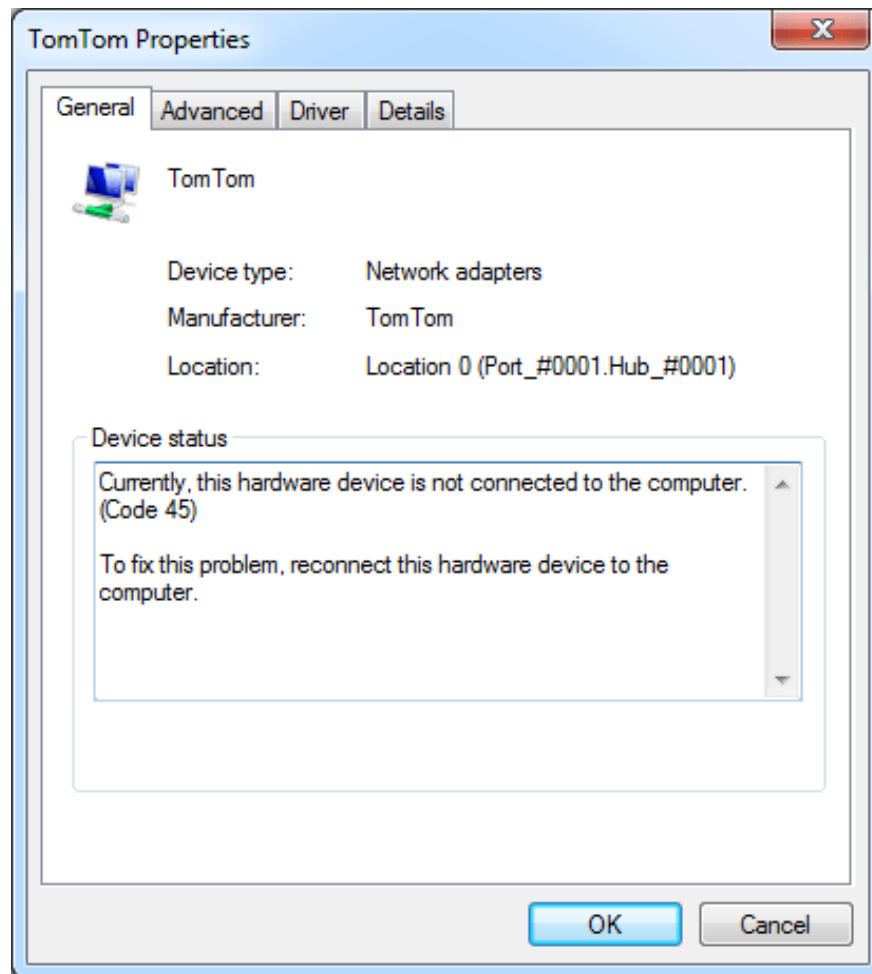
27. Error code 44 (code 44)

An application or service has shut down device hardware this. (Code 44)

Fix solution: Restart your computer

Click **Start**, then select the Shut Down button. Now the screen appears Shut Down Windows, here you select **Restart** to restart your computer.

28. Error code 45 (code 45)



Trong trường hợp này, thì lỗi này không thể khắc phục được trên máy tính. (Code 45)

This error occurs if a device has previously connected to your computer but cannot connect now. To fix this problem, simply reconnect the device hardware to the computer.

When you reconnect the device to the computer, the error code will automatically be corrected.

29. Error code 46 (code 46)

Windows không thể truy cập được thì lỗi này là do hệ thống hành động là trong tiến trình shutting (Code 46)

Solutions:

The device is not available because your system is turned off.

This case does not need any solution to fix it. Just reboot your computer, the device hardware will work properly.

This error code only occurs when Driver Verifier is enabled and all applications are turned off.

30. Error code 47 (code 47)

Windows không thể sử dụng thiết bị này vì nó không thể hiển thị cho bạn gì, nhưng nó không thể xóa (Code 47)

Solutions:

- Reconnect the device:

This error occurs if you use the Safe Removal application to prepare to remove the device or eject the device.

- Reconnect the device to your computer:

Disconnect your device from the computer, then proceed to reconnect the device.

- Restart your computer:

Make sure that your device is connected to the computer, then the operating system restarts your computer.

Click Start, then select the Shut Down button. Now the screen appears Shut Down Windows, here you select Restart to restart your computer.

31. Error code 48

Phản ứng cho thiết bị này đã được gỡ bỏ bởi bạn vì nó không biết đến Problems với Windows.
Contact the Vendors hardware for a new driver. (Code 48)

Solution: Update the driver

Contact the device hardware manufacturer to get the latest driver version information or update the driver, then install the driver on your computer.

32. Error code 49

Windows không thể khởi động các thiết bị cũ hơn vì hệ thống hive là quá lớn (vượt quá kích thước Registry). (Code 49)

Causes of errors:

The Hive system exceeds the maximum size and the new device cannot work unless the size is reduced. The Hive system is part of the Registry associated with files that contain computer configuration information on the installed operating system. Configuration sections include applications, user preferences, devices, etc.

The cause of the error may be because the specific device is not mounted on the computer but still in the Hive system.

Fix solution: Uninstall the device that you no longer use

To fix this problem, you can uninstall any device hardware you don't use:

1. Set up Device Manager to display the device that is no longer connected to the computer

- Click **Start**, select **Run** to open the Run command window.

- On the Run command window, enter **cmd** to open Command Prompt.

- On the Command Prompt window, enter the following command and press Enter:

```
set devmgr_show_nonpresent_devices = 1
```

2. On Device Manager, click **View** , then select **Show hidden devices** .

At this time on the screen you will see the list of devices that are not connected to the computer.

- Select the device you want to uninstall.

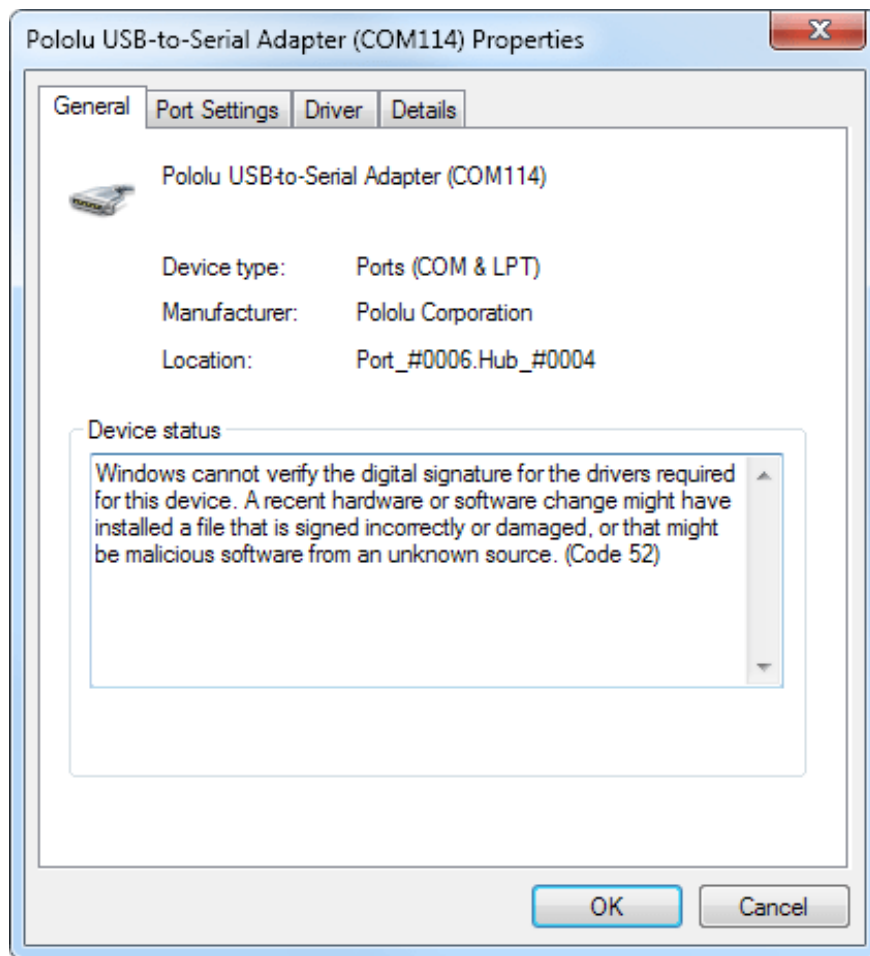
- On the Properties dialog window, click the **Driver** tab, then click **Uninstall** and follow the steps on the screen.

- Restart your computer.

3. Uninstall devices that you no longer use.

4. Check on the Properties dialog box in the Device Manager window to see if the error has been fixed.

33. Error code 52 (code 52)



Windows không thể kiểm tra tên ký hiệu cho các thiết bị cần thiết cho này thiết bị. Phần mềm nào đó có thể thay đổi cài đặt tin là đã không đúng (Code 52)

Causes of errors:

The cause may be due to a driver error or failure.

Solutions:

If you use the Troubleshooting Wizard and still don't fix the error, you can try to apply one of the following methods:

- If your device is a CD or DVD drive, you can use the Fix problems with CD or DVD drives tool that cannot read or write media to fix the error.

Download Fix problems with CD or DVD drives that can't read or write media to your computer and install here.

- Visit the manufacturer homepage to download and install the latest driver version for the device.

Refer to some of the following articles:

1. Summary of driver error codes on Windows and how to fix them (Part 1)
1. Instructions to fix Driver Power State Failure on Windows
1. Fix the 'This Device Can Perform Faster' error when connecting a USB device

Good luck!

You finished reading the article "**Summary of driver error codes on Windows and how to fix (Last part)**" edited by the [TipsMake](#) team. We hope this article has provided you with many useful tech tips and tricks. You can search for similar articles on tips and guides. Thank you for reading and for following us regularly.