

Summary of common Touchpad errors and how to fix them

For laptop users, Touchpad errors are always a headache, extremely annoying and are often fixed by buying and installing a new mouse. However, you can also calmly read the article Summary of Touchpad errors. See below to find the quickest and most cost-effective repair.

The Touchpad control software **on laptops** is not stable software, they often encounter unexpected errors during use and sometimes users will turn off the Touchpad or less experienced people will feel confused. It's embarrassing when you encounter errors such as the Touchpad freezing or not working, especially the situation where **the Touchpad freezes** very often with some older laptop models.

Summary of common Touchpad errors and how to fix them

To avoid encountering unexpected Touchpad errors as well as being able to identify more errors while using your laptop, you can **turn off the Touchpad** as well as readers, please pay attention to the issues we mentioned, for now. Now let's start synthesizing common **Touchpad errors and how to fix them**.

Summary of errors and how to fix Touchpad errors on laptops

1. Touchpad cannot be used

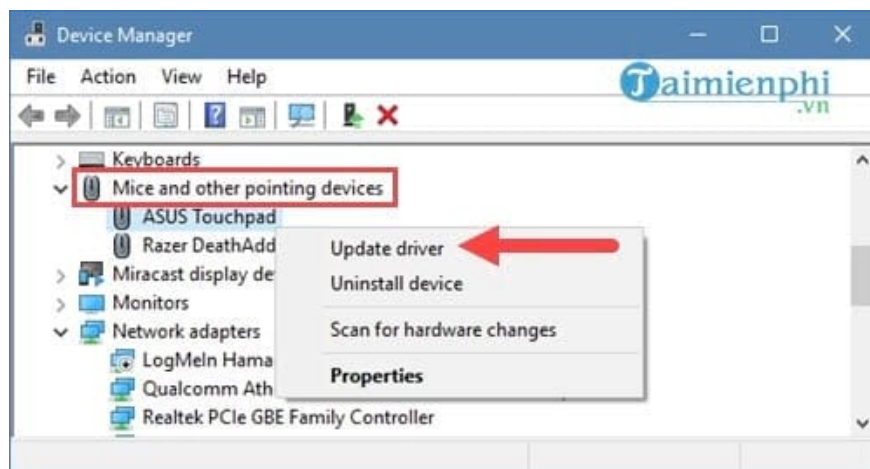
The condition of the Touchpad not being able to be used often happens with some very old laptops or occurs during the Windows 10 update process, simply because the Touchpad software has not yet adapted to the operating system, leading to Touchpad errors. If you encounter the above situation, please follow the instructions below to fix the error of **Touchpad not working**

Method 1. Update the software for Touchpad

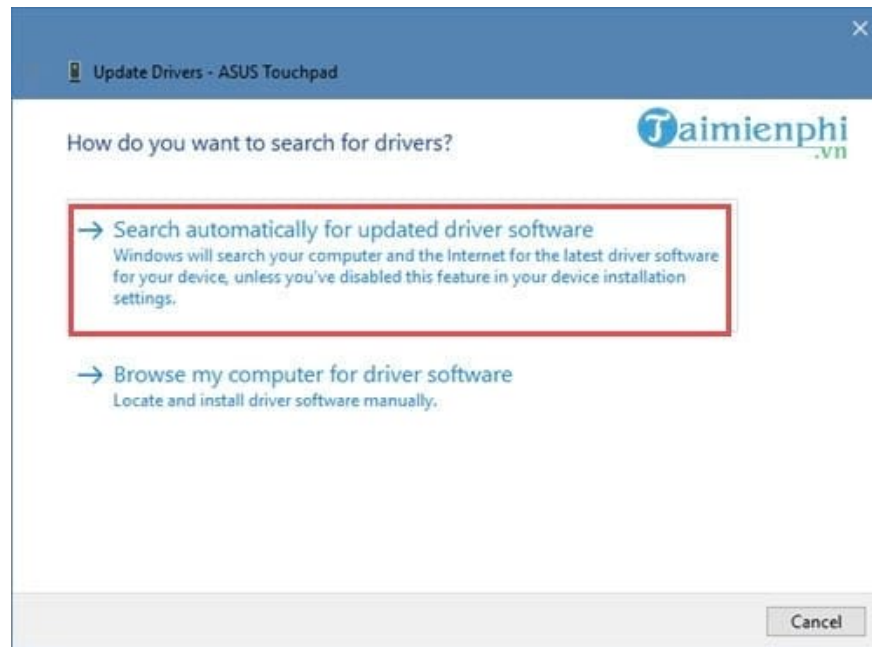
Step 1: First, press the **Windows + X** key combination and select **Device Manager** , this is the part that controls input and output device drivers, helping you fix broken touchpads. error.



Step 2: In **Device Manager**, select the mouse driver section and then click on **Touchpad** to search and select Update Driver.



Step 3: Then select **Search automatically for updated driver software** so that the system can detect and download **updated driver** for you (if any).

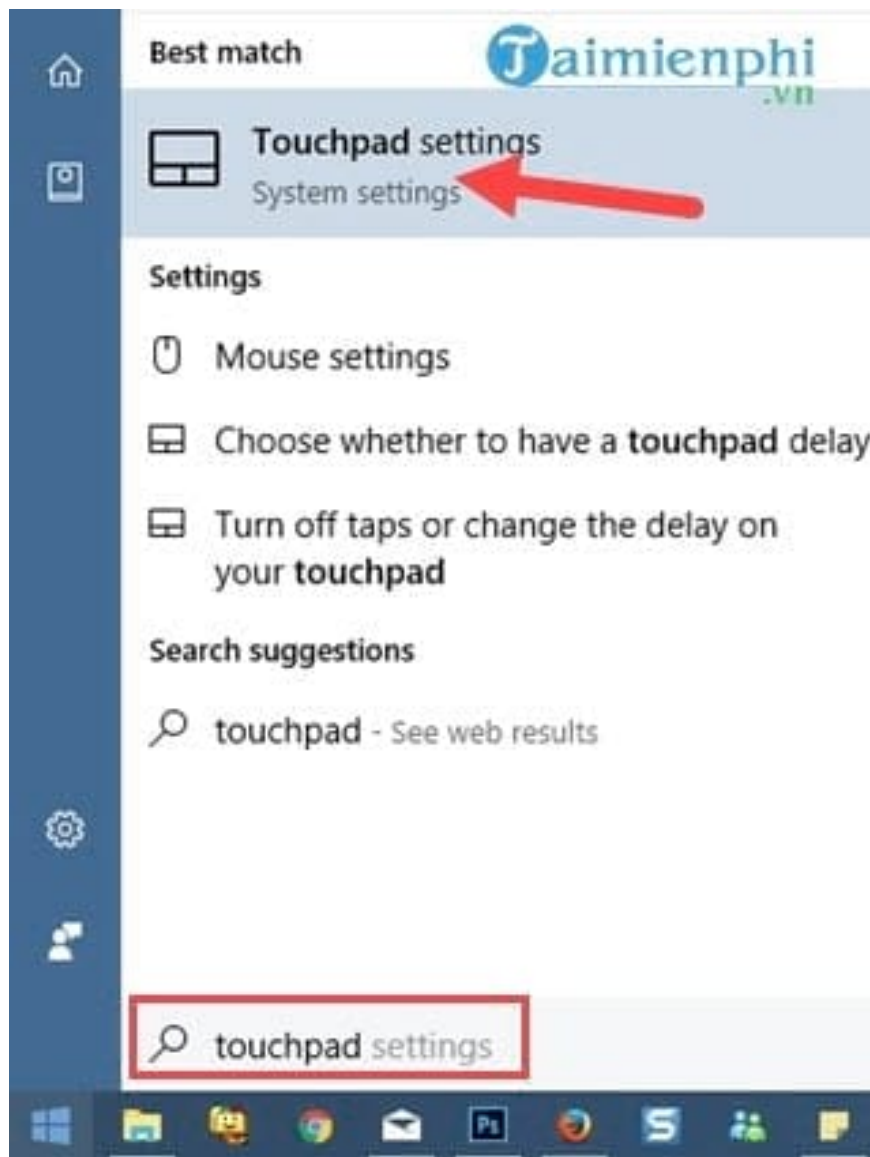


In addition, you should also visit the laptop's homepage to find the model to download the correct driver to your computer or use software that automatically detects drivers such as **Driver Easy** or **Driver Booster** .

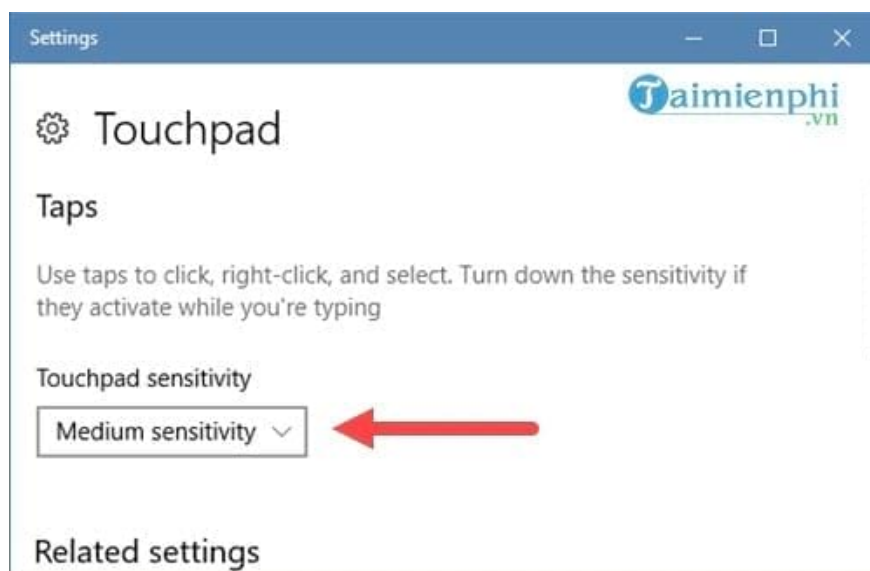
Method 2. Reduce Touchpad sensitivity

Touchpad sensitivity is a mode that allows you to increase the time it takes to recognize the Touchpad when you start typing, this is to limit the need to keep your hand or lean on the Touchpad when typing text. So try setting Touchpad sensitivity delay Touchpad to the lowest level to see if it fixes the faulty touch mouse.

Step 1: Turn on **the Start Menu** and type search **touchpad settings** , then select the search results.



Step 2: In the **Touchpad** section you just need to change **Touchpad sensitivity** .



You can set **Medium sensitivity** or **low sensitivity** depending on your preference.



Then restart the computer and try again to see if the Touchpad error still occurs

2. Touchpad does not scroll backwards.

Laptop scroll scroll error is reversed when scrolling up and down is one of the most common errors when users use the touchpad on a laptop. This error is mainly due to the settings of the user's touchpad installer. causes the above error, to be able to fix the Touchpad error you must first confirm which product's Touchpad it is and then we can handle the problem.

Fortunately, TipsMake also has an article about the problem of Touchpad scrolling being reversed and readers should immediately refer to our instructions. With instructions on how to fix **the Touchpad scroll in reverse error** , it will quickly help you get out of the above situation.

3. Error of Touchpad moving the mouse around.

You have turned off the Touchpad but do not understand why when typing and touching it, it still moves around. This is actually due to an error where the Touchpad cannot be turned off and this will cause a lot of discomfort. when you type. This situation often occurs on new laptops and companies don't seem to care much about this issue. What you need to do is find a way to turn it off and this is also one of the errors we have guided before when a reader asked about the laptop touch mouse error, if you fall into the above situation. Why don't you immediately refer to how to fix a **broken touch mouse** error to know how to fix the above problem.

4. Touchpad cannot be turned off



This is not necessarily due to a Touchpad error, but simply because you did not turn off the Touchpad for your laptop properly, or maybe because the laptop you are using has other configurations and parameters. Before you proceed to fix the error, please refer to the methods mentioned above by TipsMake

Why don't you refer to how to turn off the laptop keyboard mouse to see if it is really due to a Touchpad error or simply because you are not using it properly. Anyway, when reading our article on how to **turn off the laptop keyboard and mouse**, you will be updated with a lot of useful knowledge about different types of laptops.

5. Touchpad does not turn off when the mouse is plugged in



This is one of the modes integrated into the Touchpad in case you use a mouse and the Touchpad will automatically turn off immediately. However, not all laptop models have automatic mode when integrating the Touchpad and we have to turn them off ourselves. Depending on the line stop, each type, the way to turn it off may be different, so to help readers handle the above Touchpad error, TipsMake's tip to automatically turn off the Touchpad when connecting a mouse will be a useful article for you. Readers can refer to tips on **automatically turning off Touchpad** when connecting a mouse right here.

Above are 5 common problems encountered when using Touchpad, causing Touchpad errors most often. In addition to relying on Touchpad manufacturers, you should also use external Touchpad disabling software. Not only will it be disabled, but these **Touchpad disabling software** will also help you more in terms of optimal use.

You finished reading the article "**Summary of common Touchpad errors and how to fix them**" edited by the [TipsMake](#) team. We hope this article has provided you with many useful tech tips and tricks. You can search for

similar articles on tips and guides. Thank you for reading and for following us regularly.
