

Successfully install Windows 10 ARM on Nintendo Switch gaming machine

Recently, a Twitter account called @imbushuo uploaded a video on a personal page that showed that he had successfully installed Windows 10 on the Nintendo Switch.

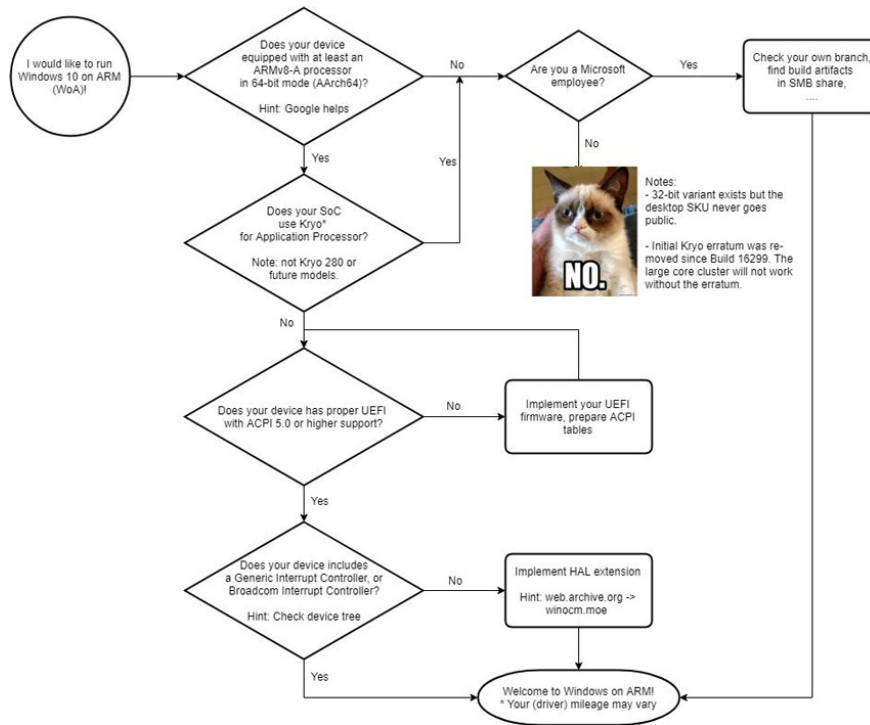
Windows 10 is becoming more compatible and hardware is getting stronger, so many people have thought of installing this PC operating system on gaming machines. There used to be someone who installed Windows 10 on a Nintendo Switch but failed, the machine crashed and hung up on the blue screen (BSoD).

Recently, a Twitter account called @imbushuo posted a video on his personal page that showed that he had successfully installed Windows 10 on the Nintendo Switch, which could go to the Windows setup screen. @imbushuo is the one who successfully installed Windows 10 on Lumia 950XL before.

The video below will help us to see the whole boot process and can go to the Windows setup screen on the Nintendo Switch gaming machine.

Currently, @imbushuo has also shared the source code of the installer on Github, if you are interested, you can visit the link below to see more.

<https://github.com/imbushuo/NintendoSwitchPkg>



Algorithm flowchart for installing Windows 10 on Nintendo Switch game console.

You finished reading the article "**Successfully install Windows 10 ARM on Nintendo Switch gaming machine**" edited by the [TipsMake](#) team. We hope this article has provided you with many useful tech tips and tricks. You can search for similar articles on tips and guides. Thank you for reading and for following us regularly.