

Strategies to know when playing Triangle Strategy

Triangle Strategy is Square Enix's latest game using its proprietary HD-2D art style, smoothly combining 2D drawings with modern 3D rendering techniques.

It is following in the footsteps of Octopath Traveler, by recreating some of the successes of other games in this new strategy RPG.



But with a similar graphical presentation, Triangle Strategy actually has a lot in common with older titles like Final Fantasy Tactics. Therefore, anyone familiar with that style of game will not have any problem choosing Triangle Strategy, although it offers its own improvements and better quality to the classic game formula.

But for those who have never played a strategy RPG before, immediately apply the Triangle Strategy tips and strategies below to get up to speed with seasoned gamers.

Strategies to know when playing Triangle Strategy

Practice in mock battles

The combat system in Triangle Strategy can be quite simple for anyone who has played the strategy game genre. However, it can still be considered difficult for newbies. Knowing what all those colored squares and floating numbers mean can only come after taking the time to get used to and practice with those elements.

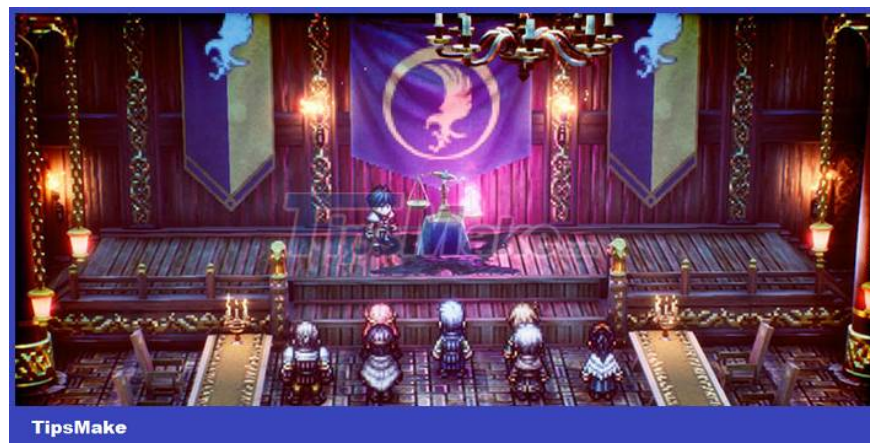


Players have the opportunity to do that without approaching the heat of an actual battle. Upon reaching Chapter 3, everyone will unlock the option to participate in mock battles in the tavern at the team campsite.

There, everyone can practice with different team members as they work to refine their strategies through different combat situations. This is also a good place to collect XP because it still gives experience points like in normal battles.

Leverage the strengths of team members

In Triangle Strategy, players can join a team of up to 12 characters from a pool of more than 20 potential members. This opens up all possibilities as each character has different unique skills and stats.



In the team will definitely need a magic user like Narve as he can use multiple elements to exploit different environmental effects. In addition, support characters like Benedict are also important, providing party members with useful powers to create more devastating effects and combos.

It's important to note here that each character has specific strengths. Sometimes, knowing which character to use in a given situation can help control encounters with the toughest enemies.

Know your enemy



Similar to characters, all enemies encountered in Triangle Strategy also have their own skills and stats. Therefore, players should take some time before starting any confrontation with an opponent to check the details of who they will be up against.

Fortunately, it is quite easy to gather information about their abilities, just by looking at the statistics. Players can hover over them and press Y to display chi information about their strengths, weaknesses, and resistances, which will help decide which attacks to use against them.

You finished reading the article "**Strategies to know when playing Triangle Strategy**" edited by the [TipsMake](#) team. We hope this article has provided you with many useful tech tips and tricks. You can search for similar articles on tips and guides. Thank you for reading and for following us regularly.