

Steps to use Nearby Share on Android phones

Nearby Share allows you to easily share anything with other Android users. Here's how to use the Nearby Share feature.

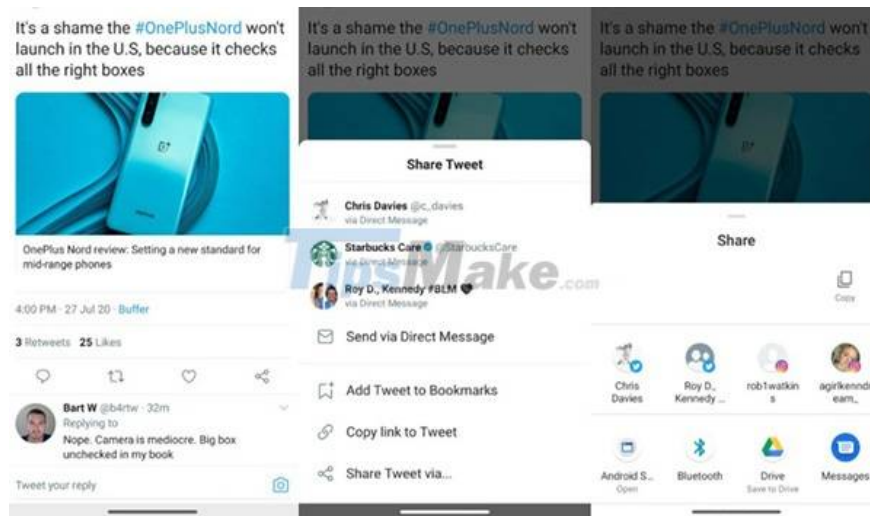
In June 2020, Google rolled out a feature Android users have been eagerly waiting for years, rivaling AirDrop on Apple devices. The name of this feature is Nearby Share, which allows you to easily share anything with other Android users. Here's how to use the Nearby Share feature.

How to use the Nearby Share feature on Android phones

Nearby Share is as easy as sharing something through any other app on your phone, with the whole process going like this:

Step 1. Click the share icon on the thing you want to share (it looks like three circles with lines connecting them).

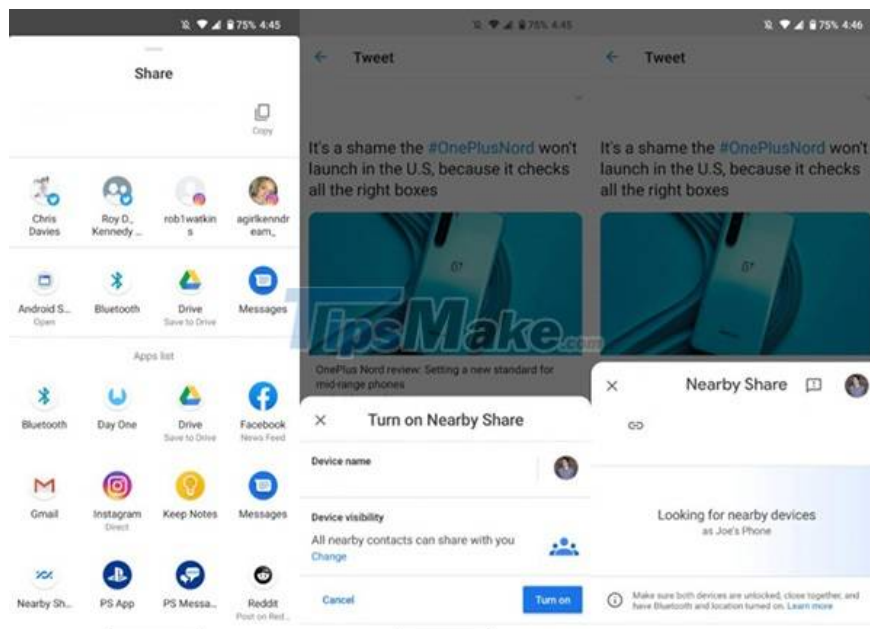
Step 2. Swipe up to enter the Android share menu.



Step 3. Click the Nearby Share icon.

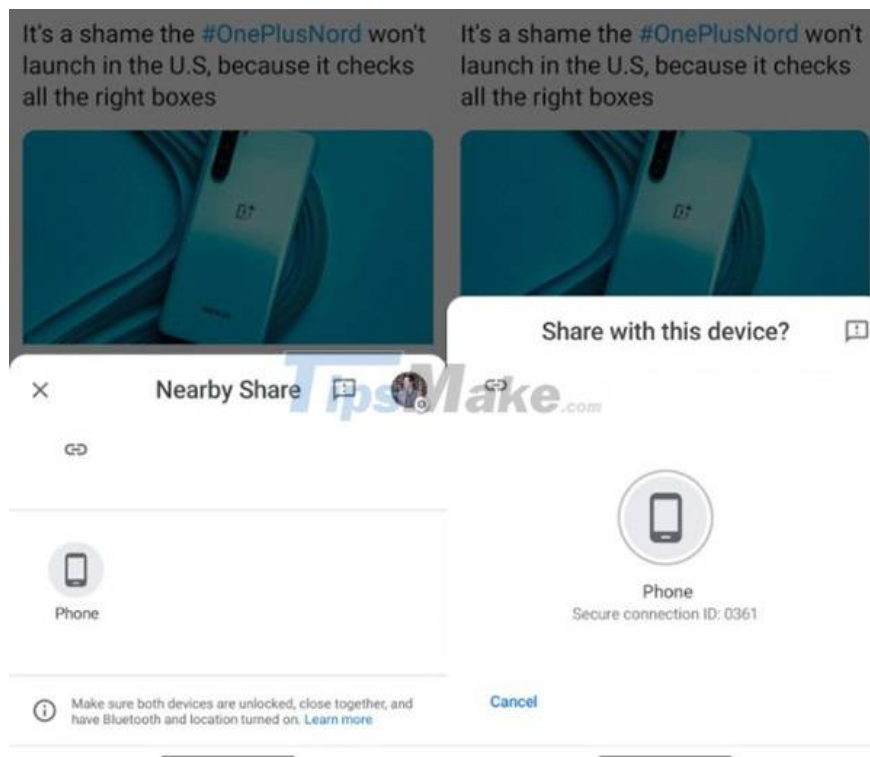
Step 4. Enable Nearby Share.

Step 5. Nearby Share will find the contact you want to share the link with.



Step 6. Any available devices will show up on your phone.

Step 7. Click on the device you want to share.



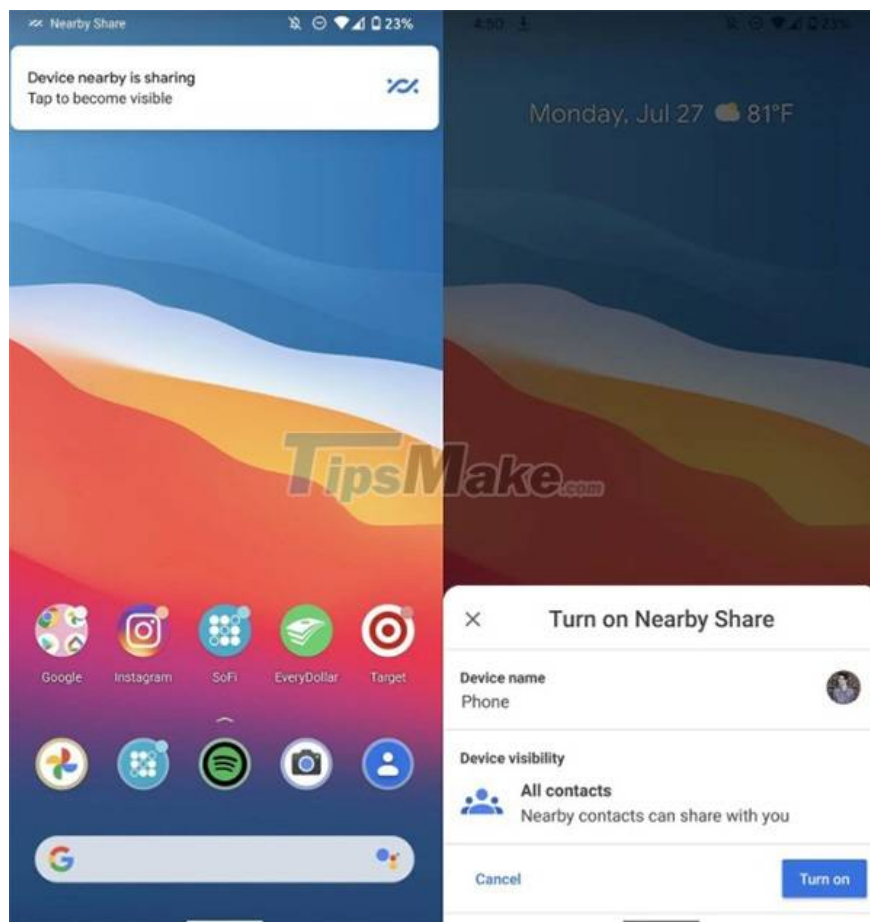
You can use the Nearby Share feature to share links, files, and other items on your phone, so feel free to use it to share anything.

How to accept Nearby Share connections on Android phones

Here's what you'll see when you receive a share via Nearby Share.

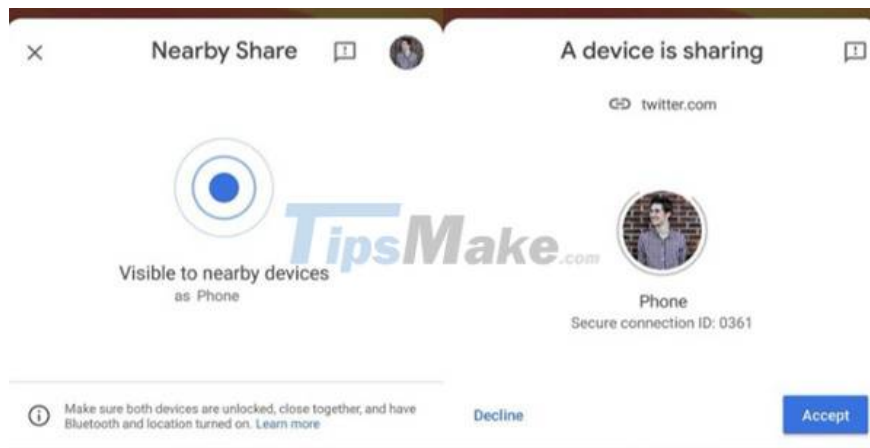
Step 1. Click the Nearby Share pop-up on the screen.

Step 2. Select **Turn on** .



Step 3. The phone will search for what is being shared with you.

Step 4. Select **Accept** to agree to receive sharing.



Once again, it must be reaffirmed that this is a simple user interface, making Nearby Share easily accessible to users.

How to customize Nearby Share on Android phones

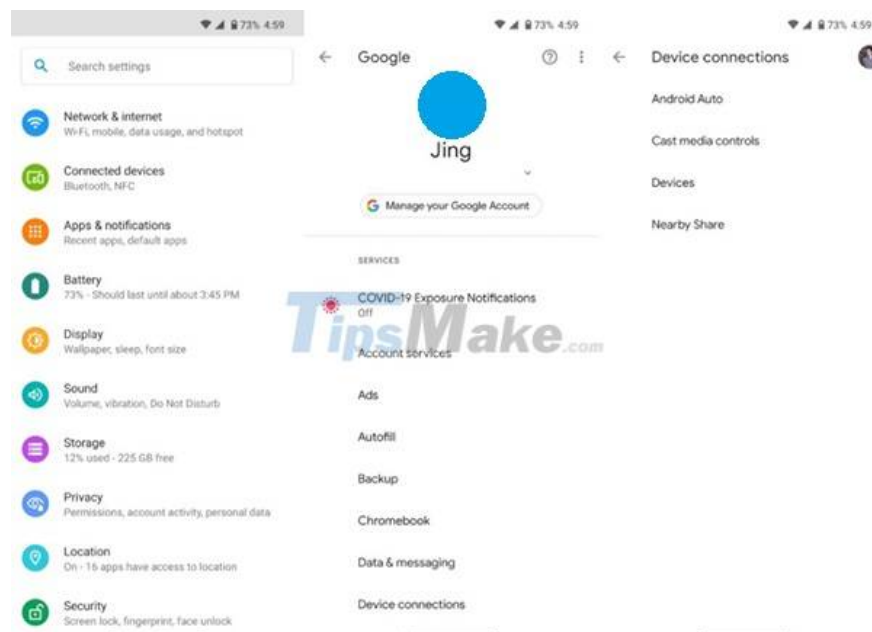
Now that you know how to use Nearby Share, it's time to start customizing it so it works exactly the way you want it to.

Step 1. Open the **Settings** app on your phone.

Step 2. Scroll down and select Google.

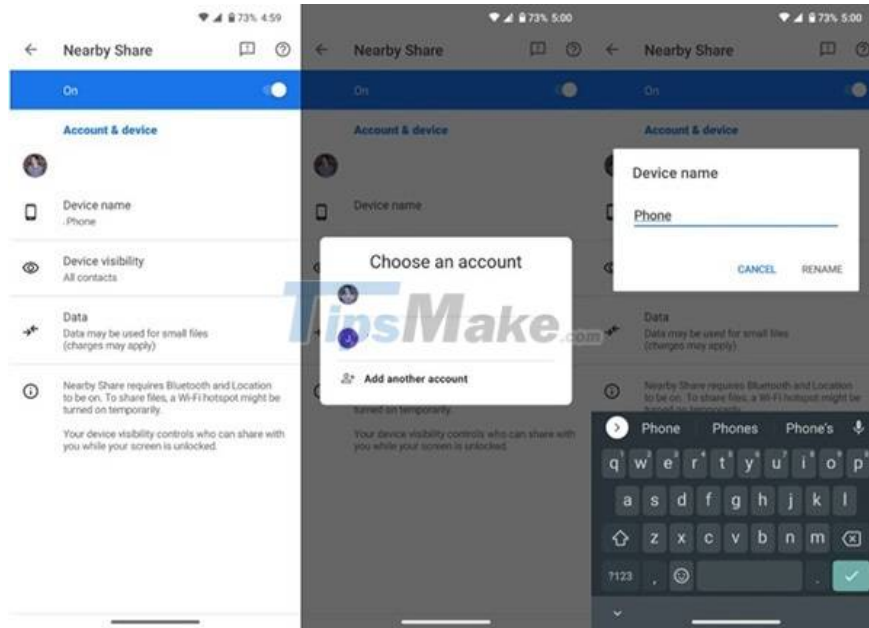
Step 3. Click on **Device connections** .

Step 4. Select **Nearby Share** .



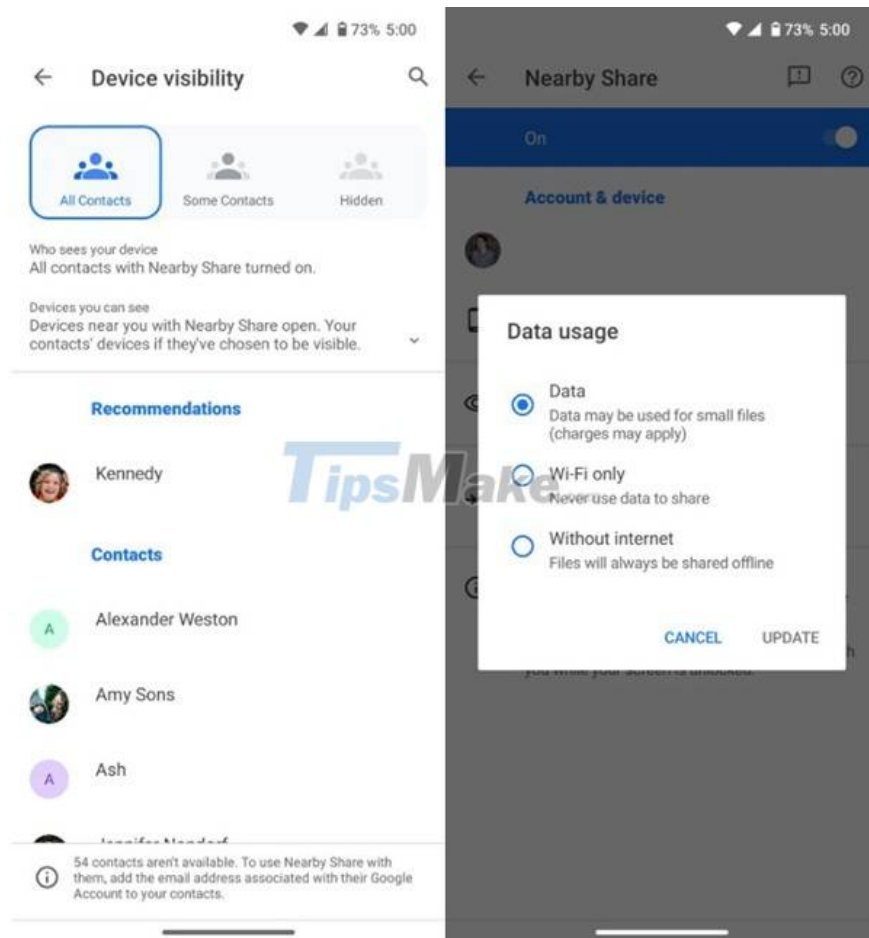
Step 5. Click the name to change the Google account you want to use for sharing.

Step 6. Click **Device name** to change the device name when sharing something.



Step 7. Select **Device visibility** to change who you share with.

Step 8. Select **Data usage** if you want to use data, Wifi or share offline.



Those last two settings are perhaps the most important, as they greatly influence how you can use Nearby Share. If you're sharing a sensitive file that you don't want to accidentally fall into the wrong hands, you can limit the Nearby Share feature to only working with a select few contacts. Furthermore, if you don't want other Android users to be able to send you everything, you can completely hide your phone from the service.

The data usage page is also quite interesting, especially the option that allows you to exclusively share files without an internet connection. Sharing can be a bit slow (especially with large files), but it's a great option if you're trying to track your data usage.

You finished reading the article "**Steps to use Nearby Share on Android phones**" edited by the [TipsMake](#) team. We hope this article has provided you with many useful tech tips and tricks. You can search for similar articles on tips and guides. Thank you for reading and for following us regularly.