

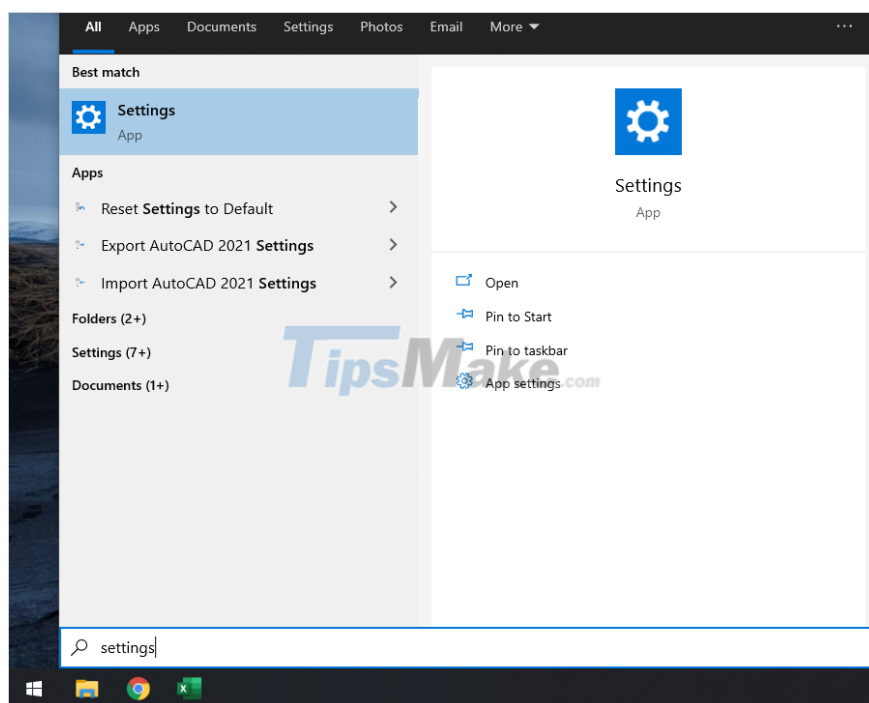
# Steps to restore the default Font in Microsoft Office

To restore the default Font that comes with Microsoft Office, you will need to repair Office in the installation.

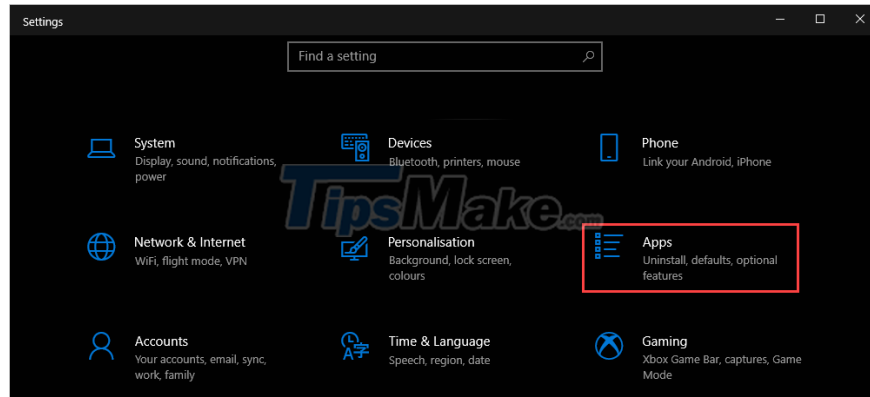
If you delete the wrong fonts on the system, they also mean that the fonts in Microsoft Office are also lost. In case of font loss, Office software will use default fonts and they affect presentation or formatting. To restore the default Font that comes with Microsoft Office, you will need to repair Office in the installation.

## 1. How to Restore Microsoft Office Fonts in Settings

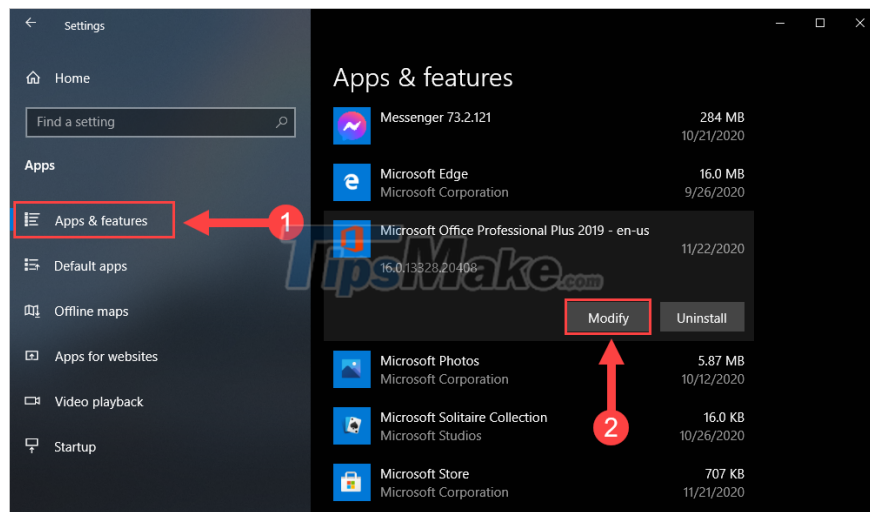
**Step 1:** At the main interface of the screen, proceed to select **MenuStart** and enter **Settings** to open.



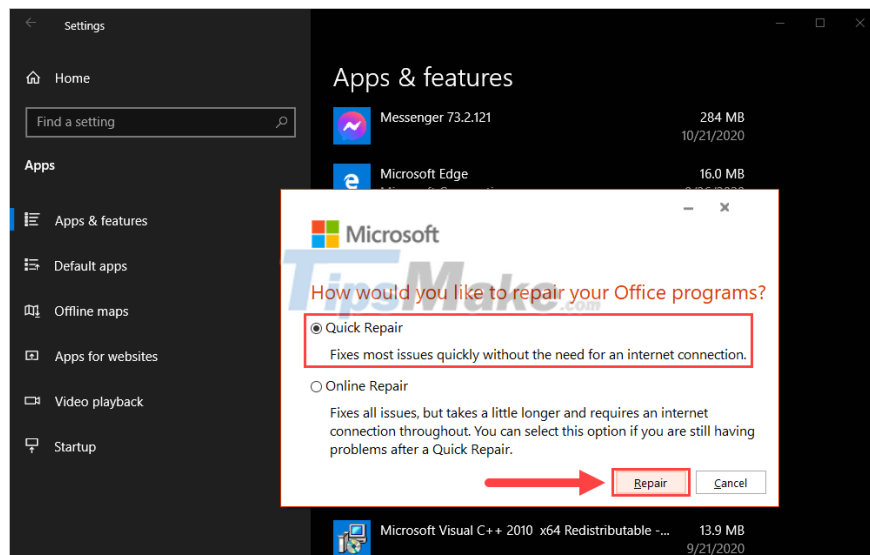
**Step 2:** When the **Settings** window is open, proceed to select the **Apps** item to see all the applications on Windows 10.



**Step 3:** Then, select the **App & Features** tab (1) and navigate to the **Microsoft Office Professional** section to select **Modify** (2) .



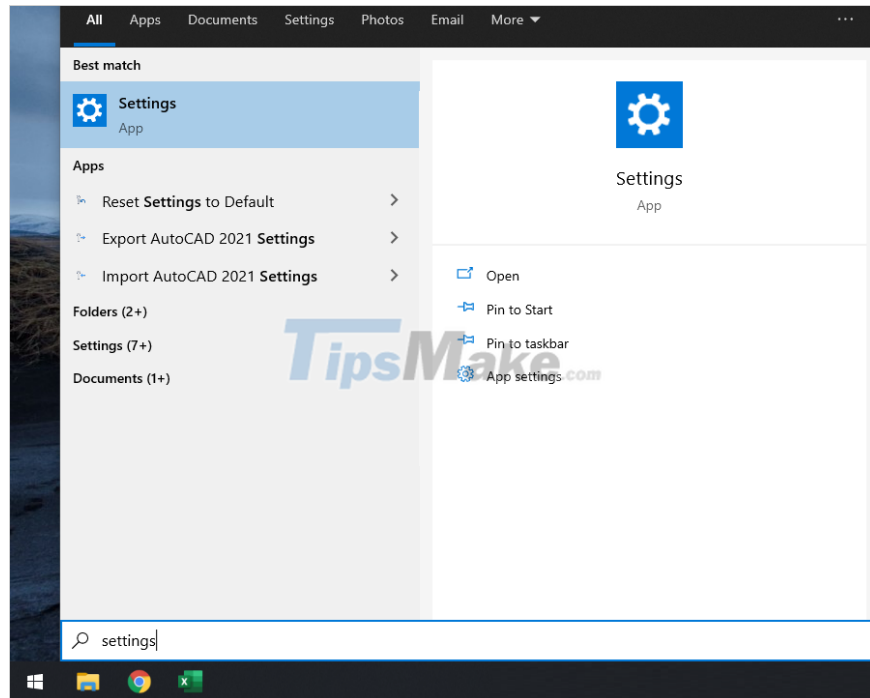
**Step 4:** In the error correction window, select the **Quick Repair** item and click **Repair** to start restoring the entire font of the software.



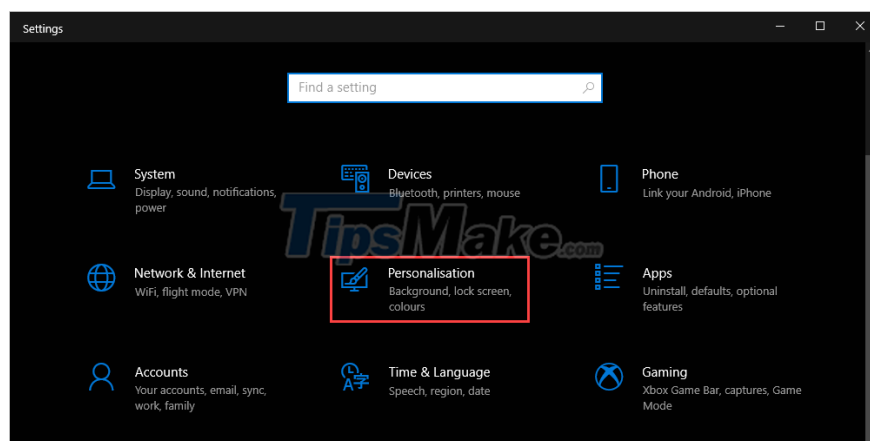
## 2. Manually Reinstall Fonts in Microsoft Store

The fonts used in Microsoft Office are provided on the Microsoft Store, so you can download and install them directly on your computer.

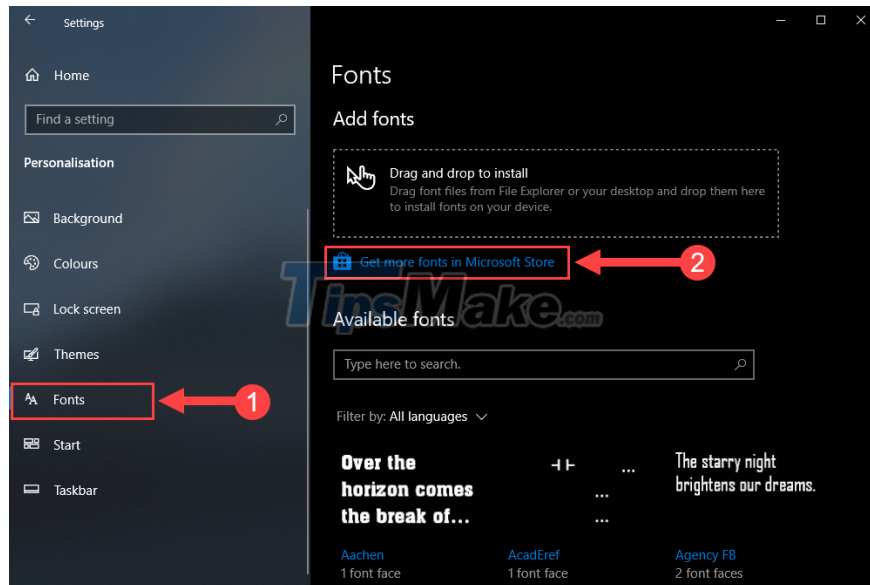
**Step 1:** At the main interface of the screen, you proceed to open **MenuStart** and enter **Settings** to open.



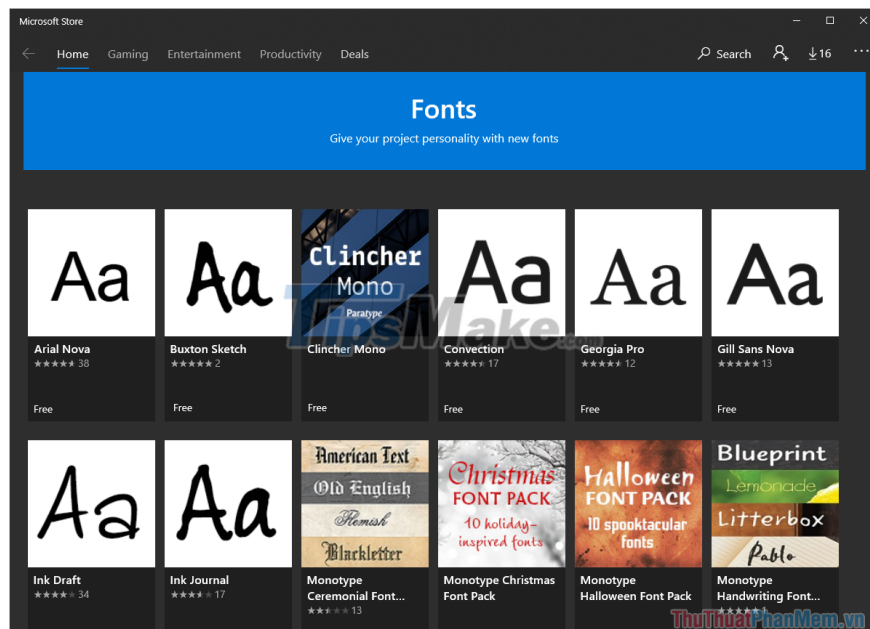
**Step 2:** Then, you select the **Personalization** tab to open the user settings.



**Step 3:** Next, select **Fonts (1)** and proceed to select **Get more fonts in Microsoft Store (2)** to download them to your computer.



**Step 4:** When the Microsoft Store store is opened, you open each font in turn to download and install.



**Step 5:** To install the font from the store, you just need to click **Get** and you're done.



Good luck

You finished reading the article "**Steps to restore the default Font in Microsoft Office**" edited by the [TipsMake](#) team. We hope this article has provided you with many useful tech tips and tricks. You can search for similar articles on tips and guides. Thank you for reading and for following us regularly.

---

© 2019 TipsMake.com