

Steps to resize Start Menu on Windows 10

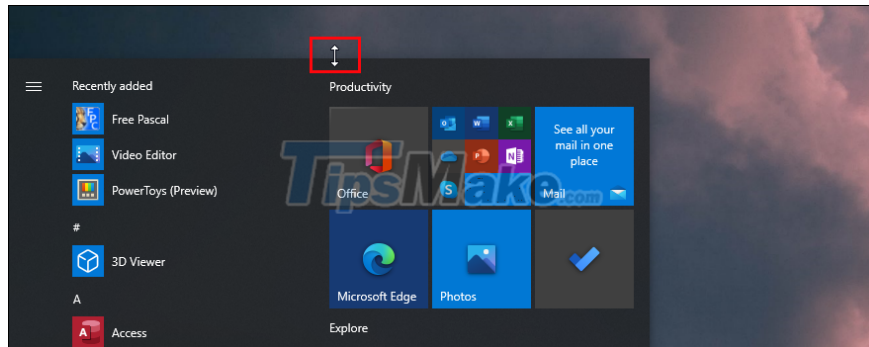
On Windows 10, you can optionally change the size of the Start Menu vertically and horizontally to suit the needs of each person. If you want to change the size of the Start Menu, you just need to do the following:

1. How to manually resize the Start Menu on Windows 10

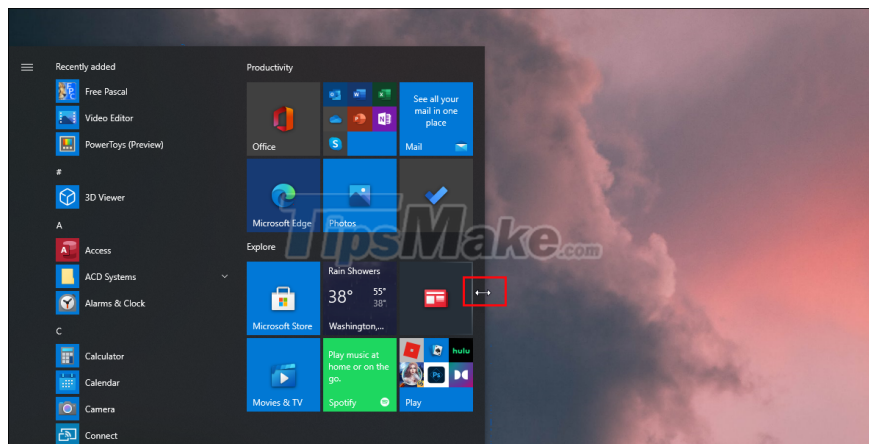
On Windows 10, you can optionally change the size of the Start Menu vertically and horizontally to suit the needs of each person. If you want to change the size of the Start Menu, you just need to do the following:

Step 1: Please **press the Windows button** on the keyboard or **the Start icon** on the screen to open the Start Menu.

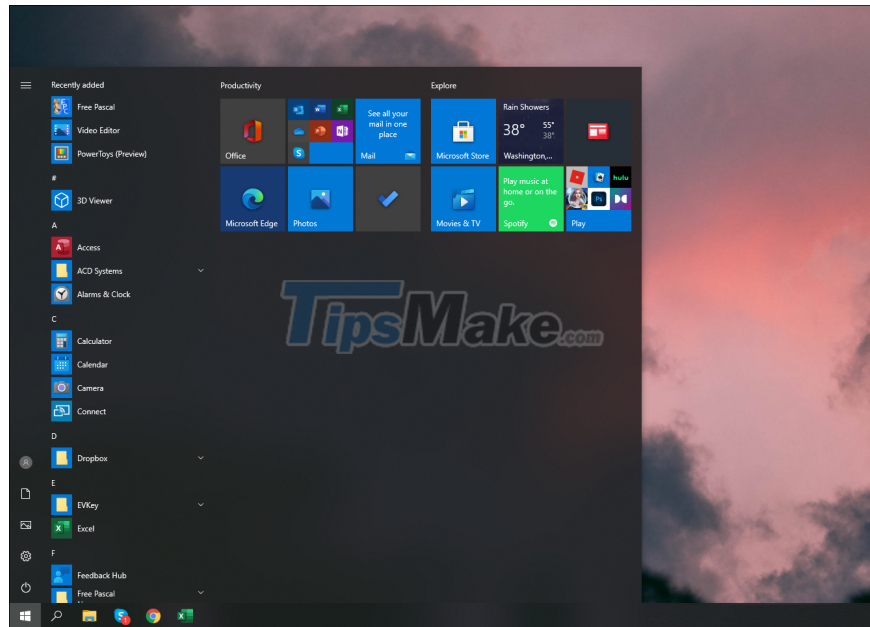
Step 2: Then, move your mouse to the top border of the Start Menu to display a double-headed arrow. Now, just hold the mouse and drag them to resize the Start Menu.



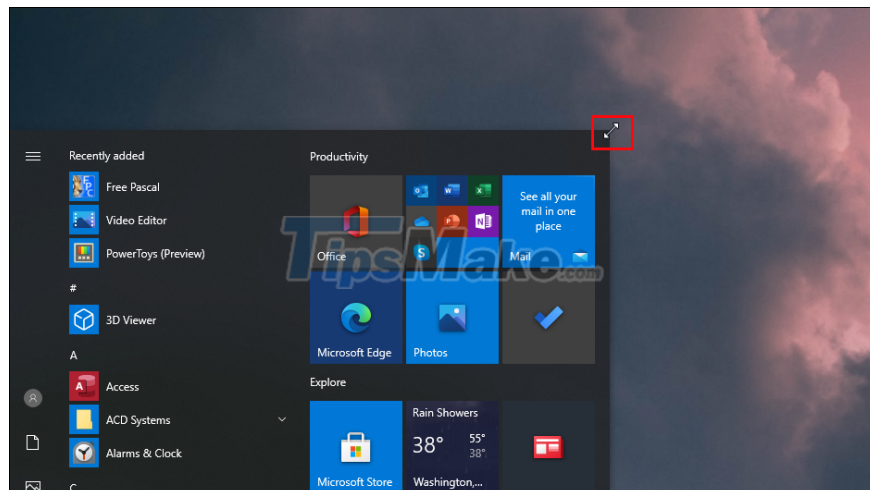
Step 3: For the width of the Start Menu, you also do the same to change the size.



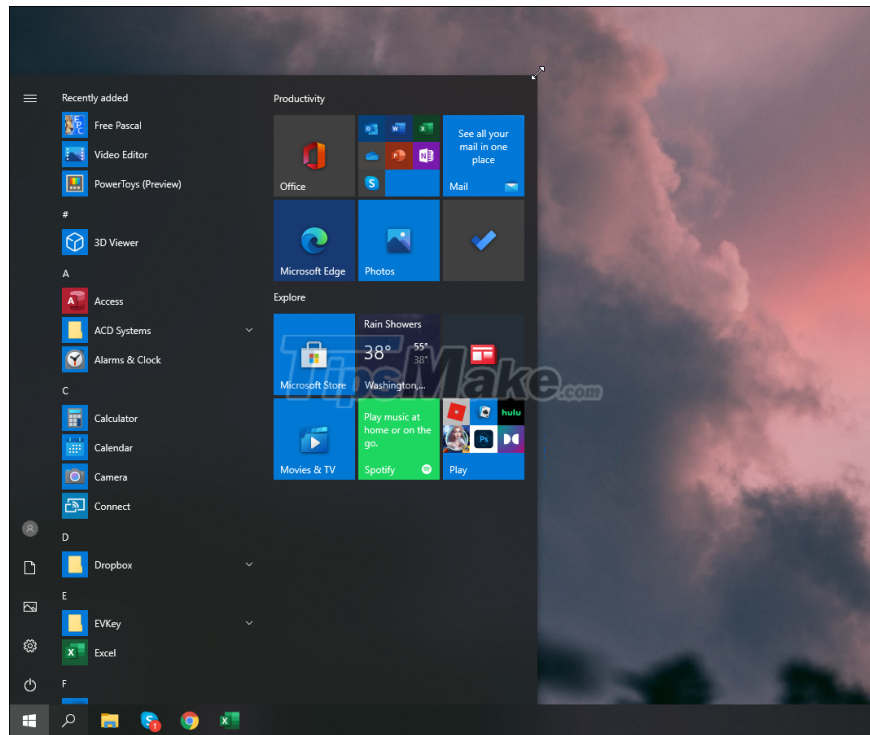
Step 4: When increasing the width of the Start Menu, the suggested applications will be rearranged into 02 columns and each column will have 03 small horizontal cells. When changing the size of the horizontal, pay attention to the best division of cells.



Step 5: When you want to resize both sides of the Start Menu at the same time, you just need to move the mouse pointer to the corner of the Start Menu and drag them.



Step 6: After resizing the Start Menu is complete, the system will automatically save it for the next use, you do not need any more operations.

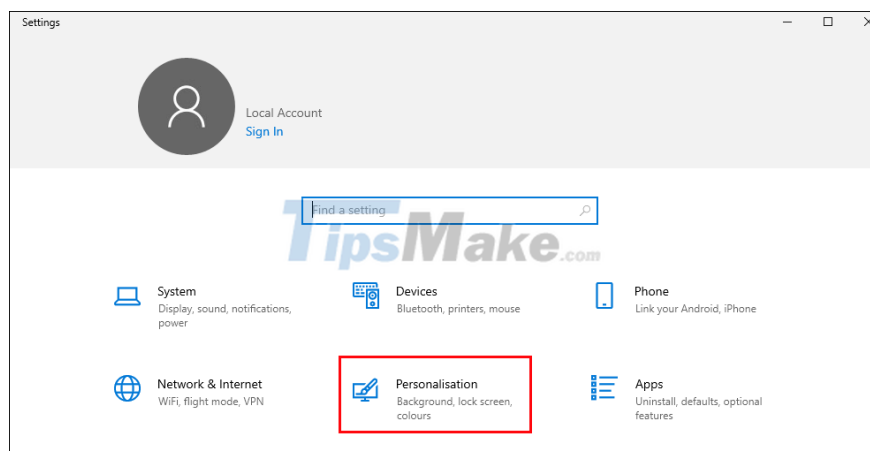


2. How to Enlarge the Start Menu to Full Screen

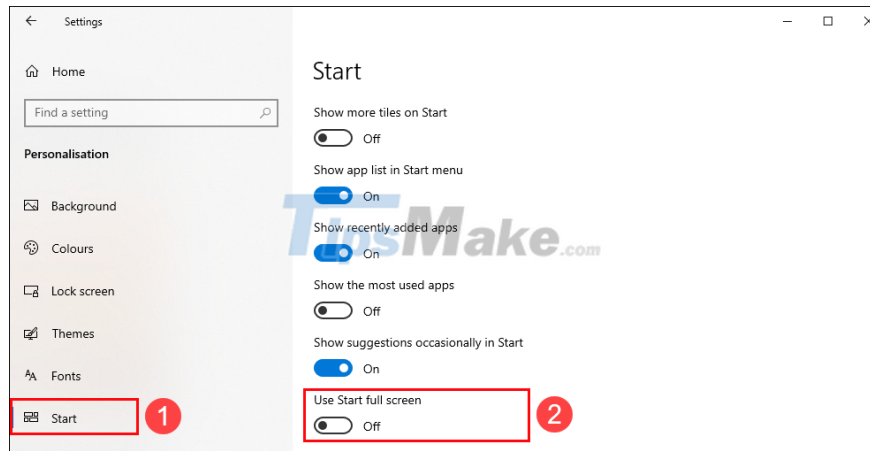
In How to manually resize the Start Menu, you can easily see that they are limited in size. That way only allows you to expand the Start Menu to 3/4 of the screen and cannot be larger. To enlarge the Start Menu to full screen, you will have to tweak it in Windows Settings.

Step 1 : Open Settings on Windows by pressing **Windows + I** combination .

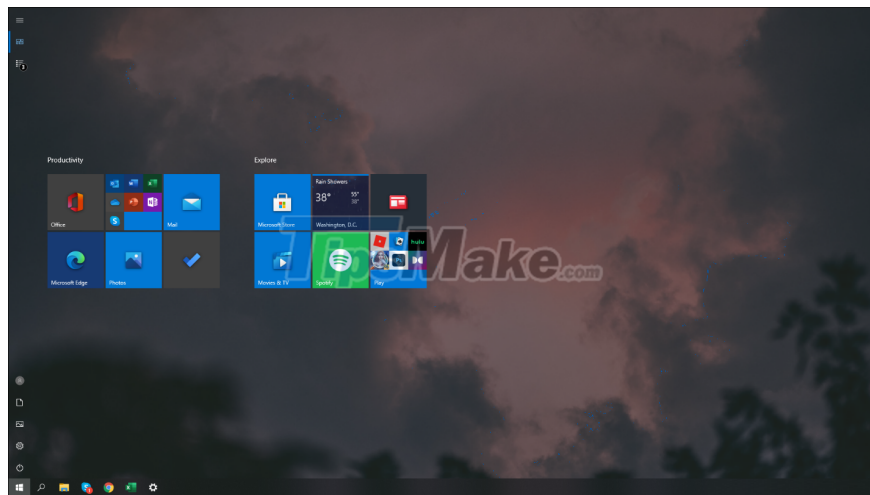
Step 2: Then, you select the **Personalization** item to change the personal interface.



Step 3: Next, select the **Start** tab (1) and select **Use Start full screen** (2) to activate the Start Menu to full screen.



Step 4: Now, the Windows Start Menu will display full screen instead of displaying a corner as before.



In this article, TipsMake has shown you how to change the size of the Start Menu on Windows 10 quickly and effectively. Have a nice day!

You finished reading the article "**Steps to resize Start Menu on Windows 10**" edited by the [TipsMake](#) team. We hope this article has provided you with many useful tech tips and tricks. You can search for similar articles on tips and guides. Thank you for reading and for following us regularly.