

Steps to reset chart in Excel

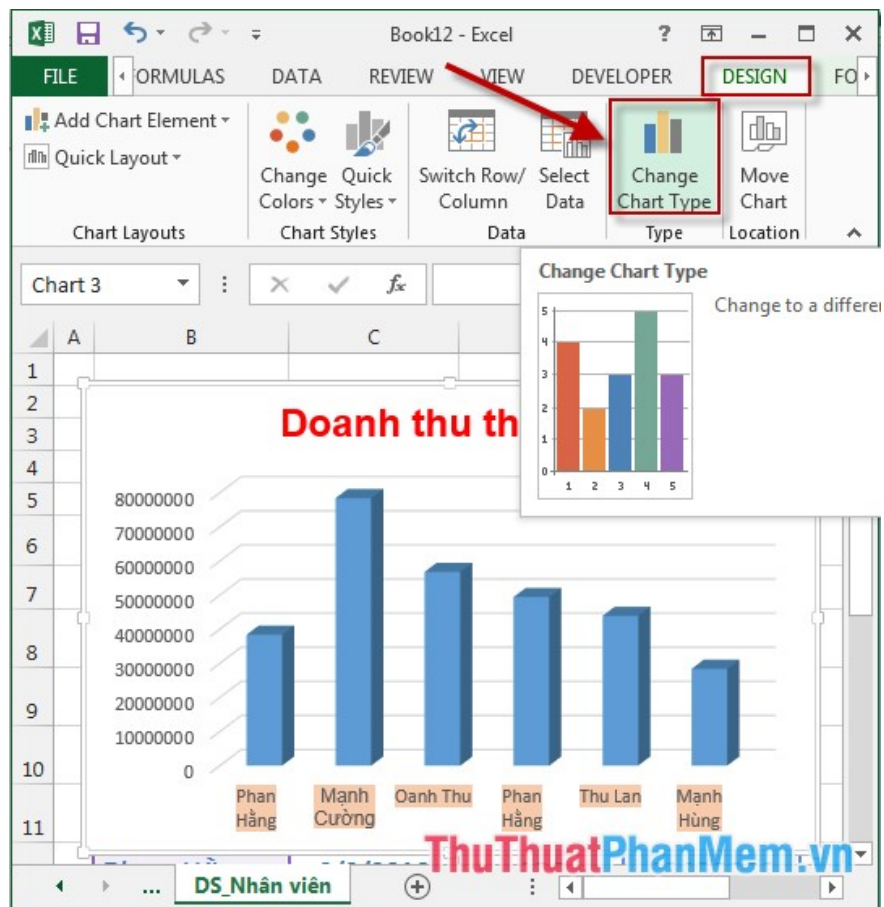
The following article shows you the steps to reset the chart in Excel 2013. After creating the chart, if you do not like the selected chart style, you can do the following to change the chart type The simplest and fastest way: Step 1: Sign

The following article guides you through the steps to reset the chart in Excel 2013.

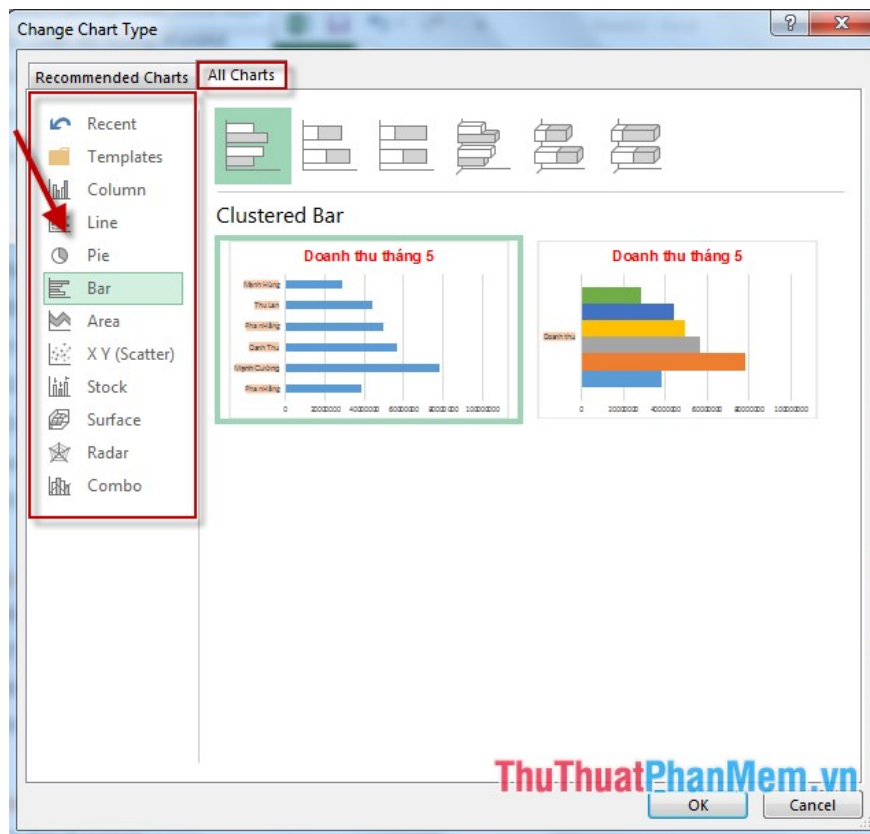
Change Chart Type

After creating the chart, if you are not satisfied with the selected chart type, you can do the following to change the chart style in the simplest and fastest way:

Step 1: Click on the chart you want to set -> **Design -> Change Chart Type:**



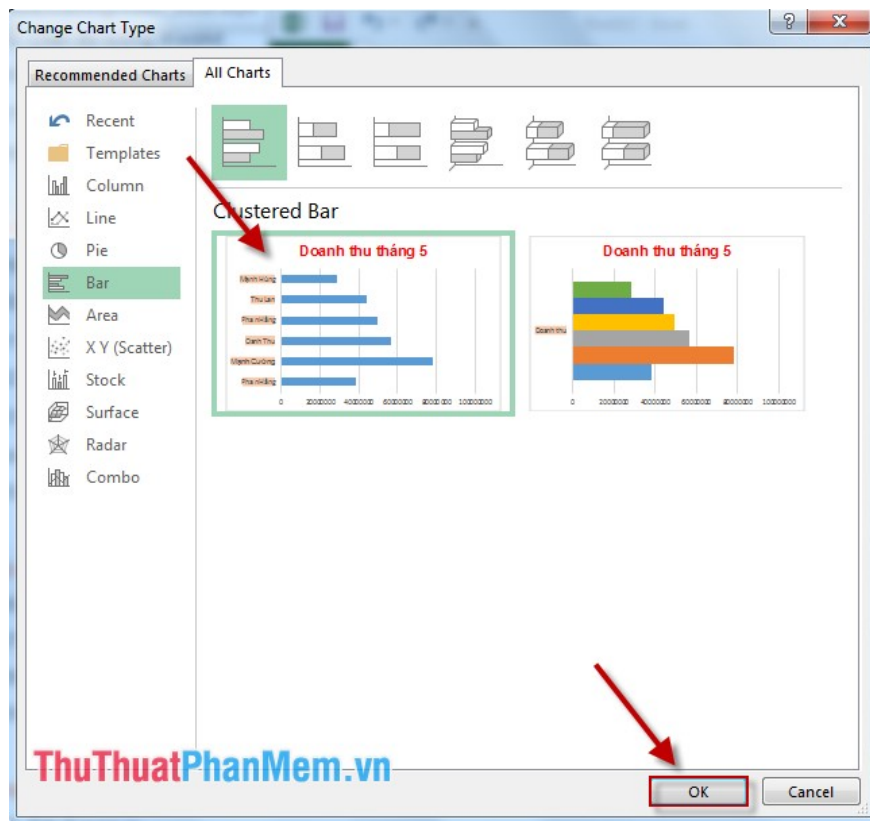
Step 2: The **Change Chart Type** dialog box appears -> click on the **All Charts** tab -> select the chart groups on the left hand side of the dialog box:



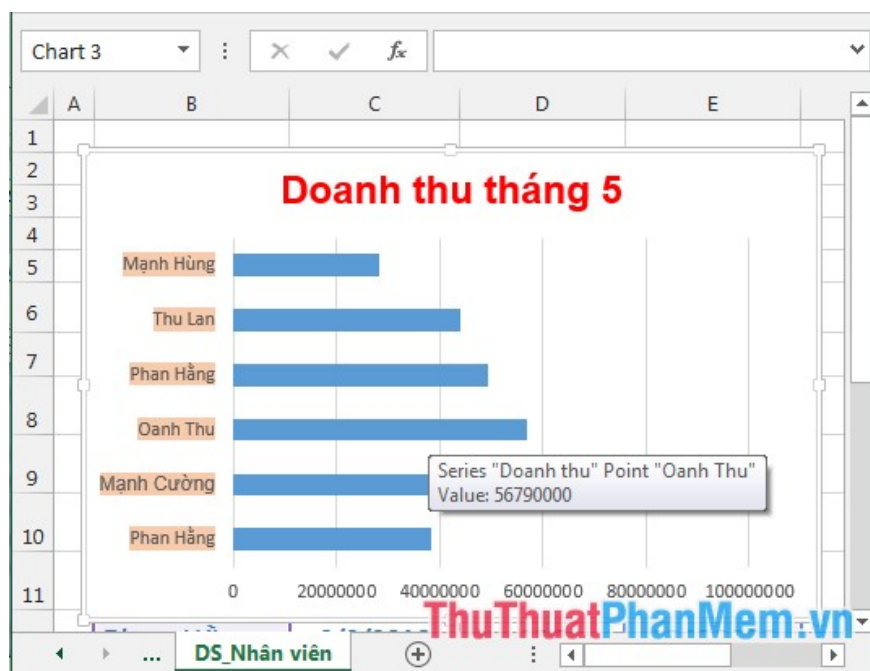
Some groups of frequently used charts:

- **Column:** Group bar chart.
- **Line:** Group a line chart
- **Pie:** Group pie chart.
- **Bar:** Group horizontal charts.
- **Area:** Group chart by area type.
- **XY:** Group chart according to coordinates x, y.

Step 3: After selecting the chart groups -> select the chart you want to reset to the old chart -> click **OK:**



- After selecting the chart type you want to reset -> the new chart is replaced:



The above is a detailed guide of steps to reset the chart in Excel 2013.

Good luck!

You finished reading the article "[Steps to reset chart in Excel](#)" edited by the [TipsMake](#) team. We hope this article has provided you with many useful tech tips and tricks. You can search for similar articles on tips and

guides. Thank you for reading and for following us regularly.
