

Steps to install Microsoft Edge on Chromebook

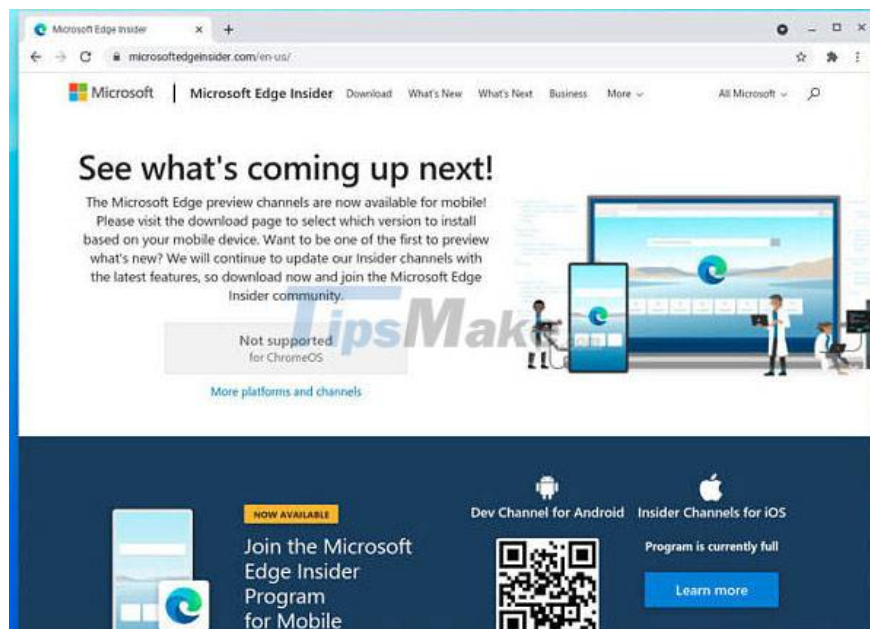
If you want to try 'change the wind' to use Microsoft Edge, you can also install this browser on your Chromebook.

Chrome OS is a 'official' operating system developed by Google, so it will be integrated with almost all Google products, services and software by default, including the Chrome browser.

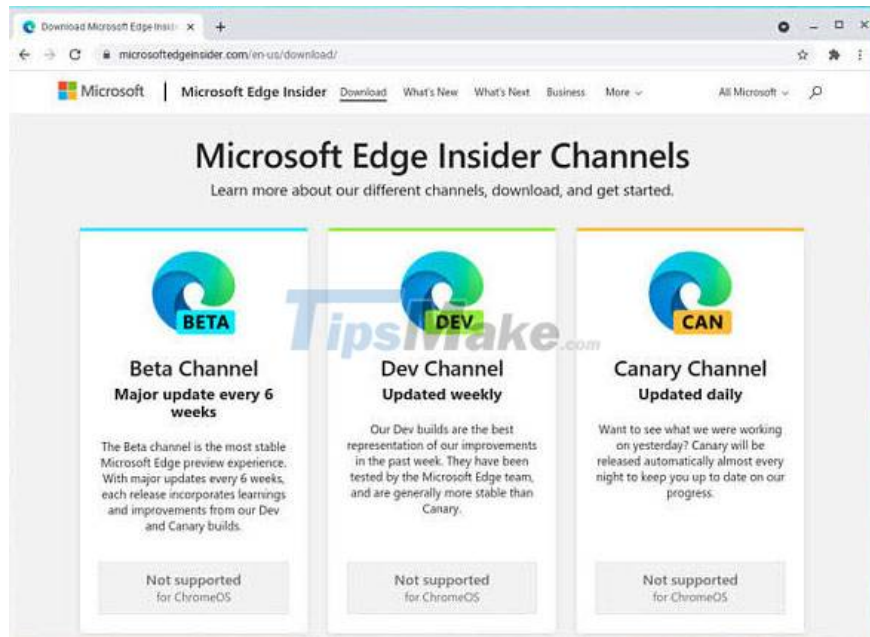
It can be said that Chromebook users are true 'fans' of Google, so using Chrome as the default browser on the system is natural. However, if you want to try to switch to Microsoft Edge, you can also install this browser on your Chromebook.

In fact, the current official version of Edge is not yet supported on Chrome OS, but you can completely install the Edge Linux version (recently released in beta) on your Chromebook.

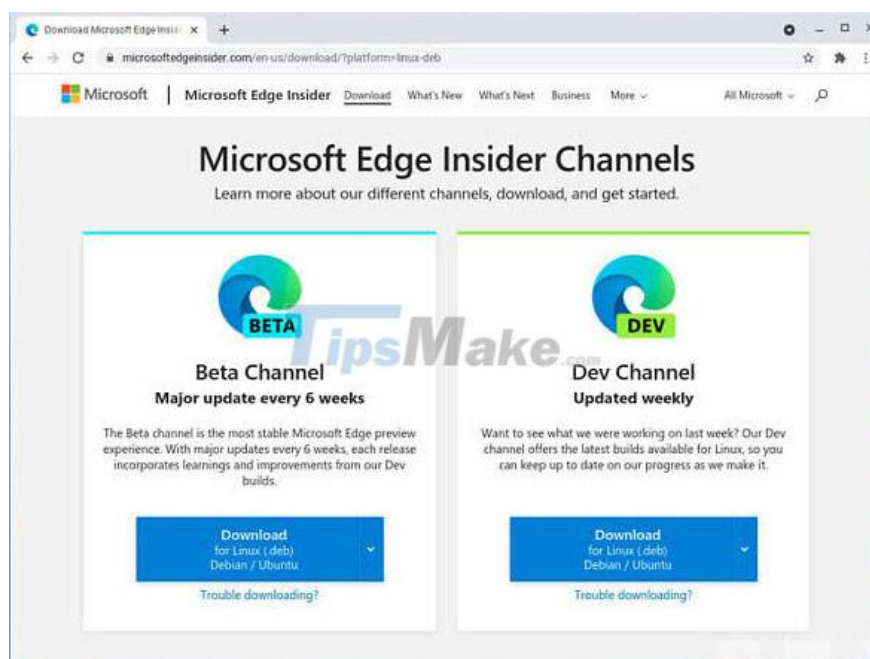
Step 1: Open Chrome and visit the [Microsoft Edge Insider website](https://microsoftedgeinsider.com/en-us/). This website will automatically detect that the operating system you are using is Chrome OS and give a notice that you are not currently supported.



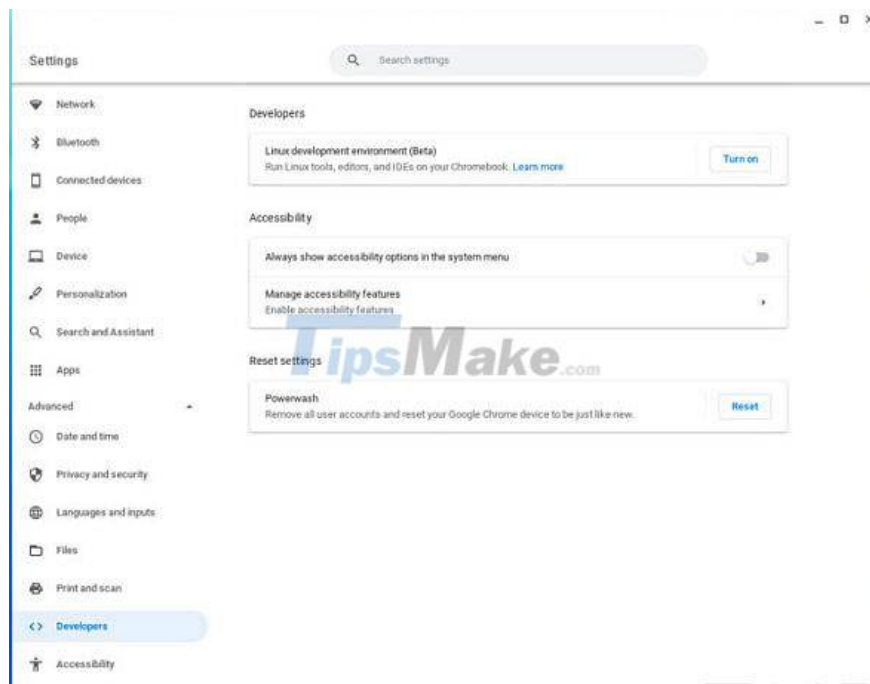
Step 2: Click "More platforms and channels". A message will be displayed, giving you more information that Microsoft Edge is not currently supported for Chrome OS. Scroll to the bottom and click the download button in the 'Linux (.deb)' section.



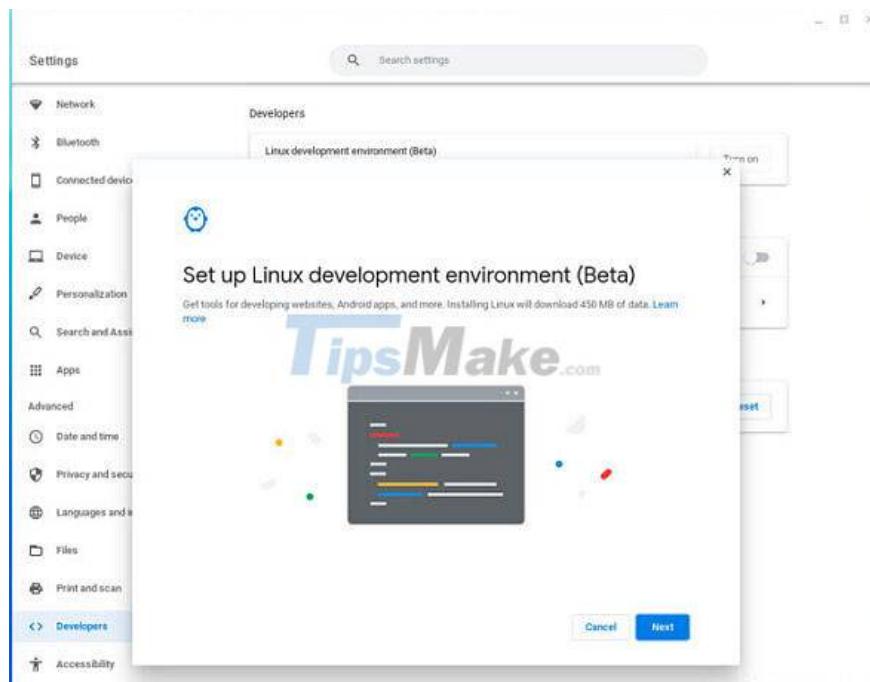
Step 3: Now choose whether you want Edge Beta or Edge Dev (Stable version is not available yet). The Beta will be updated every six weeks (the upcoming roadmap is every four weeks), while the Edge Dev will be updated weekly.



Step 4: Next, navigate to 'Settings -> Advanced -> Developers'. In the 'Linux development environment (Beta)', you click Turn on'.



Step 5: Follow the on-screen instructions to set up the Linux environment.



Step 6: Once done, open the Microsoft Edge installation file you downloaded. This process is quite simple. You'll find it in the applications section under the "Linux apps" folder.



Step 7: If you want, you can sign in with a Microsoft account. This will allow you to sync your favorites, history, passwords, etc across the browser.



The installation is complete and you can now experience Edge on your Chromebook. However, Chrome will remain your default browser. If you want a more open operating system, you can consider switching to Linux or Windows.

You finished reading the article "**Steps to install Microsoft Edge on Chromebook**" edited by the [TipsMake](#) team. We hope this article has provided you with many useful tech tips and tricks. You can search for similar articles on tips and guides. Thank you for reading and for following us regularly.