

Steps to Insert and Animate 3D Models in PowerPoint

How to create 3D effect in 3D model? Detailed instructions on how to create effects for 3D models, insert effects for 3D models in PowerPoint

The 3D Model feature in PowerPoint 2016 - 2019 allows us to insert 3D models (3-dimensional) from the computer or from Microsoft's online library into the Slide in a very simple way.

And these 3D models also allow us to format and create effects similar to other objects in PowerPoint.

In addition, because these are 3D models, PowerPoint also provides us with 5 other types of special effects, namely Arrive, Turntable, Swing, Jump & Turn and Leave.

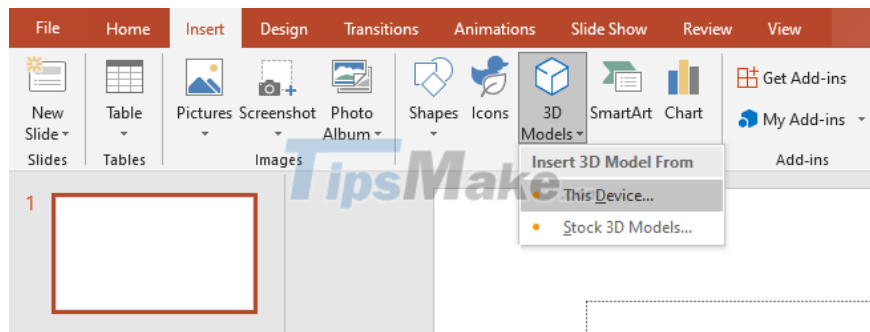
Okay, and in this article I will show you how to create 3D effects and add effects to 3D models in the most detail.

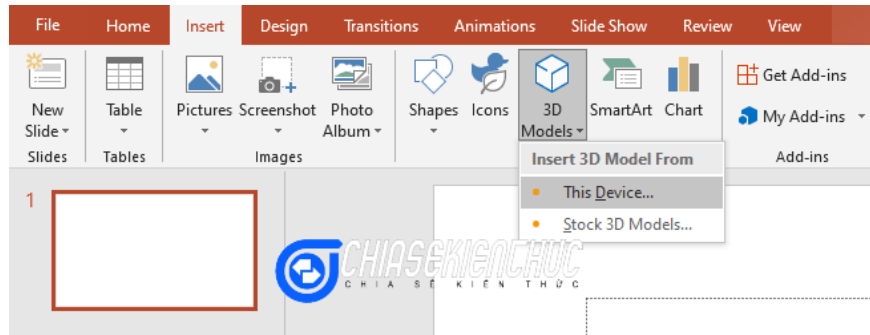
#first. Steps to insert 3D models in PowerPoint

Similar to the feature of inserting Video into PowerPoint, this feature also has 2 options: inserting from existing files, or inserting from the Internet.

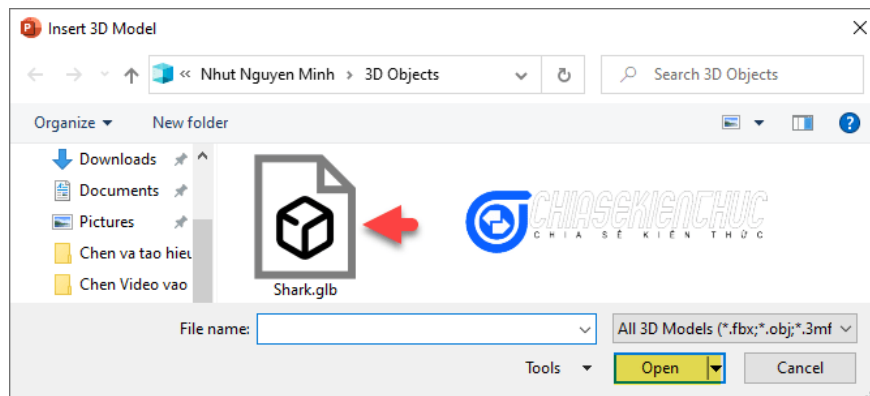
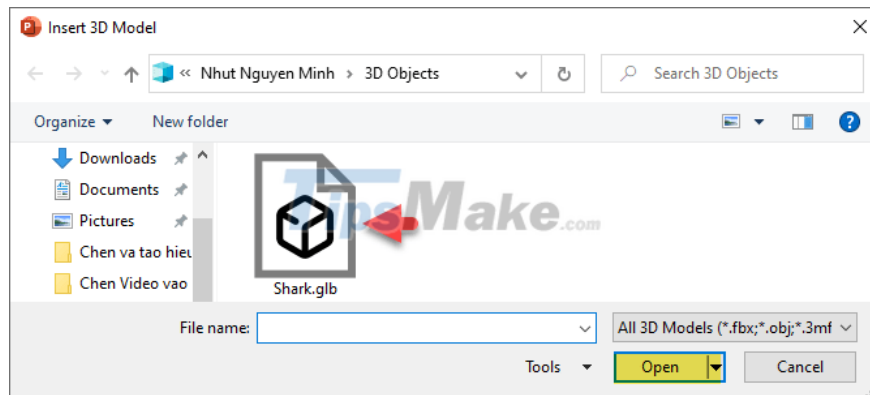
1.1. Insert from 3D files available in the computer

+ Step 1: Start PowerPoint => select Insert => in the Illustrations group => select 3D Model => select This Device.





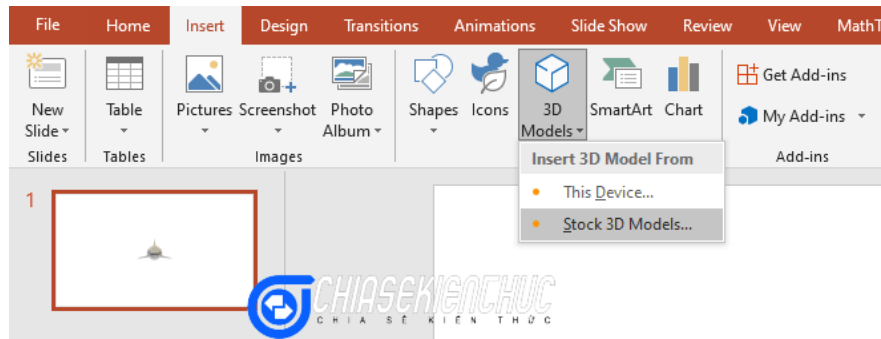
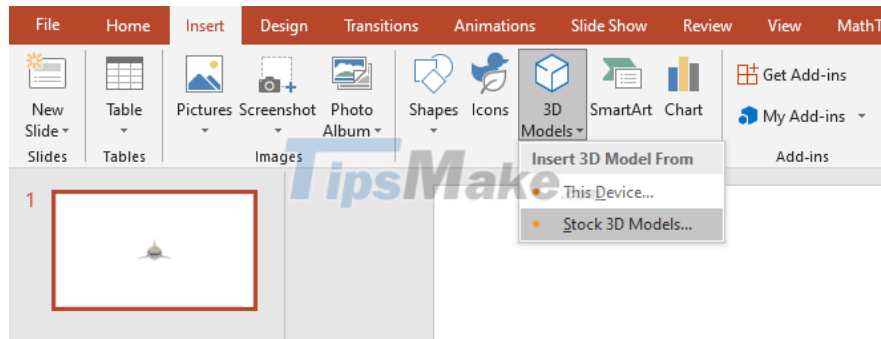
+ Step 2: When the Insert 3D Model dialog box appears, find and select the model you want to insert => select Open.



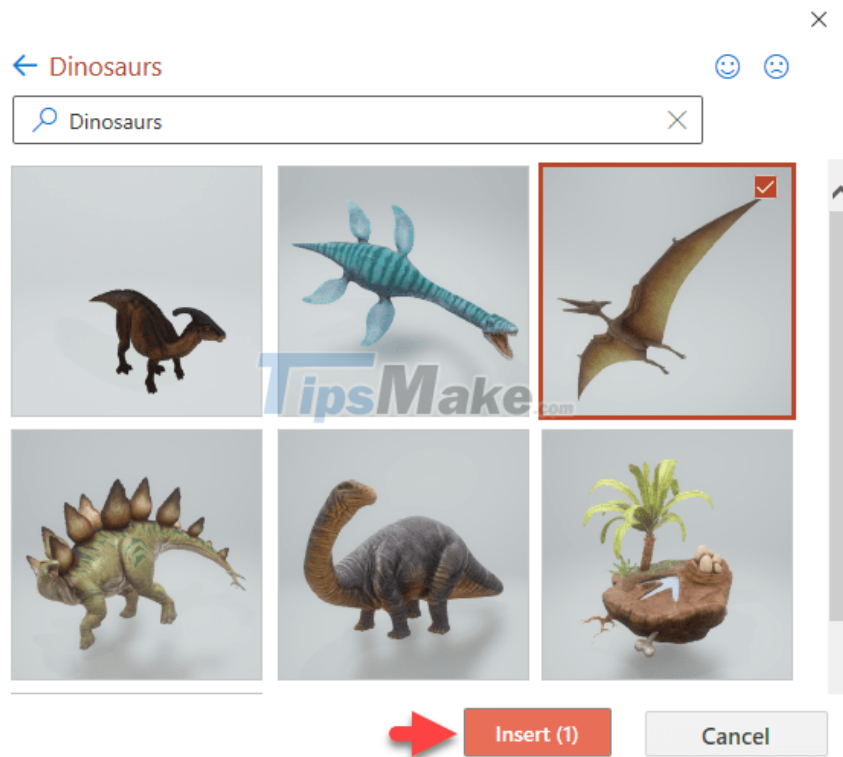
PowerPoint currently supports them in many different formats such as *.fbx, *.obj, *.3mf, *.ply, *.stl, etc. Of which *.glb is the most popular format.

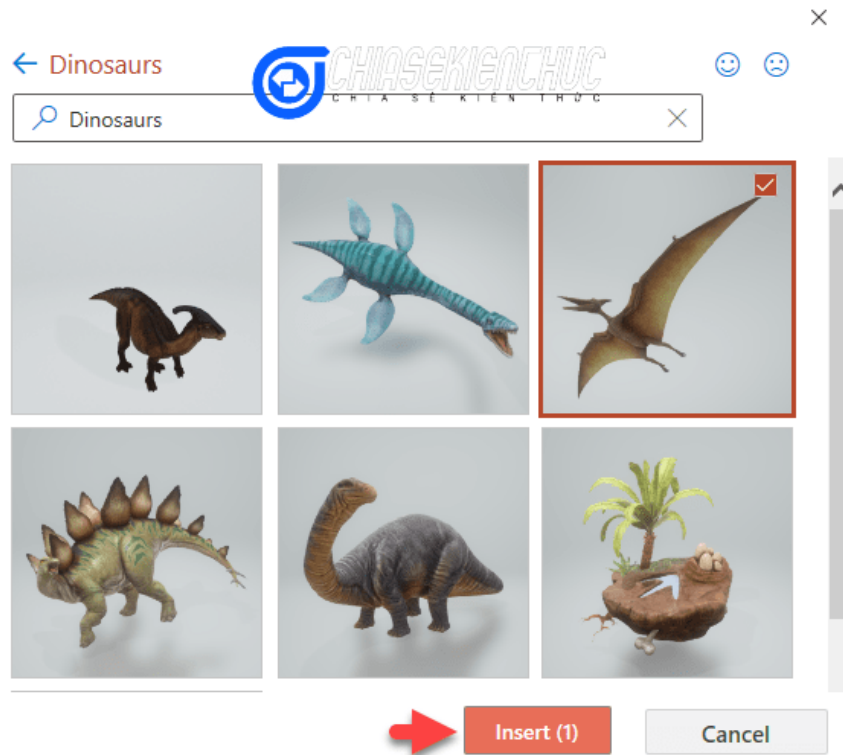
1.2. Insert from Microsoft's online library

+ Step 1: Start PowerPoint => select Insert => in the Illustrations group => select 3D Model => select Stock 3D Models .



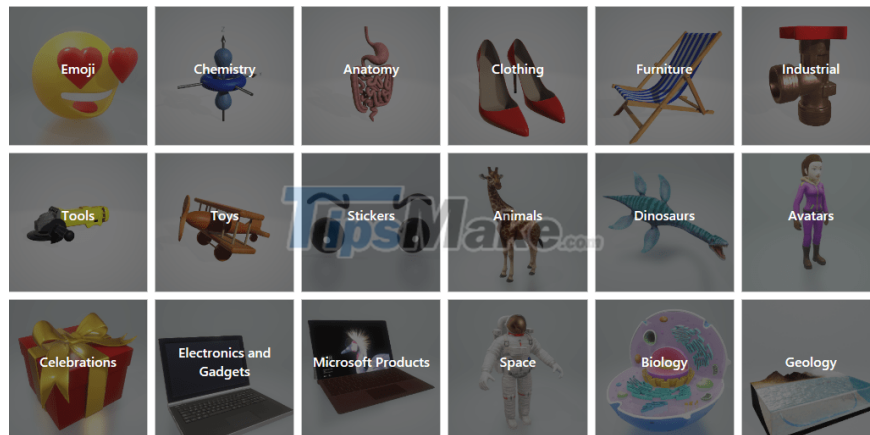
+ Step 2: When Online 3D Models appears, select the model you want to insert => select Insert

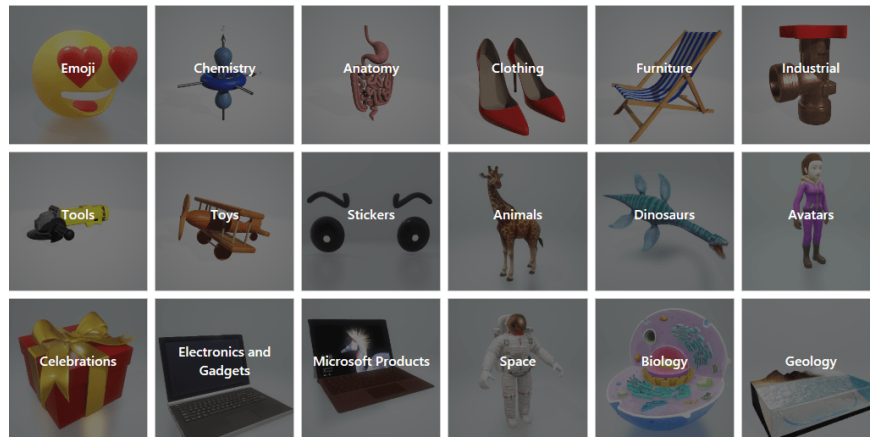




This library currently provides us with over 60 different topics: Emoji, Chemistry, Anatomy, Animals, Clothing, Furniture, Industrial, Tools, Toys, .

In addition to the available models, you can also enter the name of the model (recommended to enter in English) in the search box to find more models.



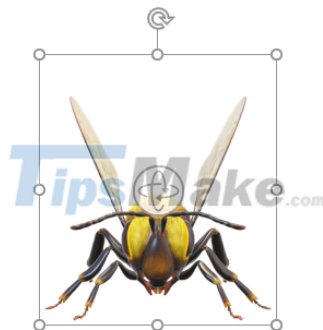


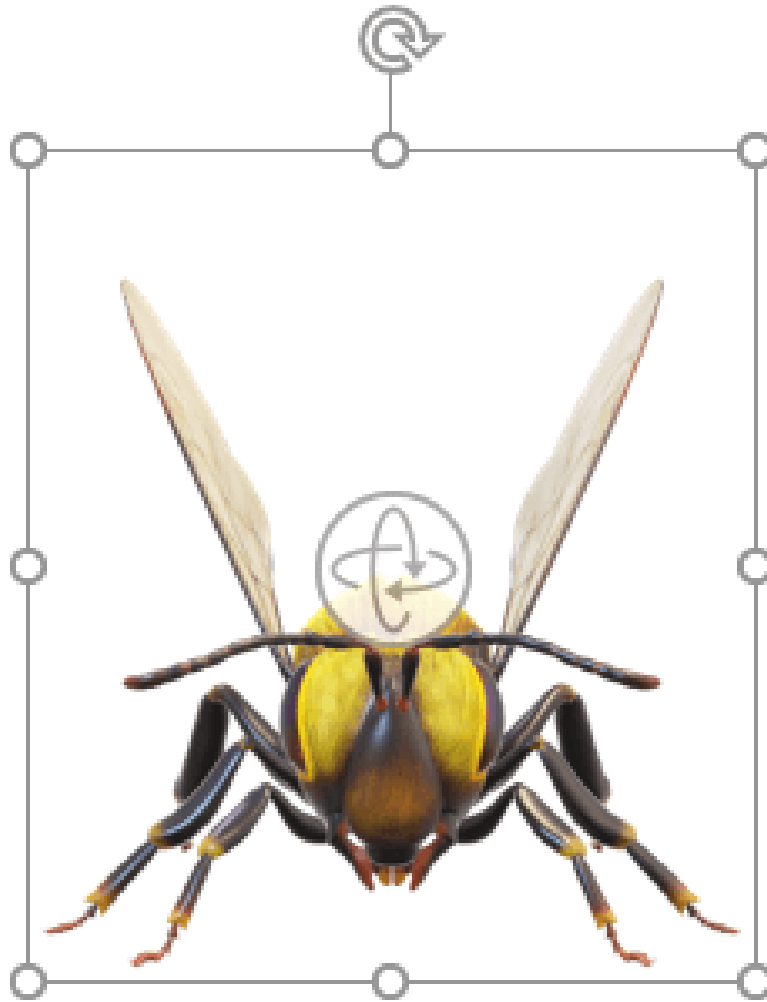
#2. Customize the viewing angle for the inserted 3D model

3-D models differ from other objects mainly in the ability to change the perspective. There are two ways to change this: select pre-designed views or customize directly on the object.

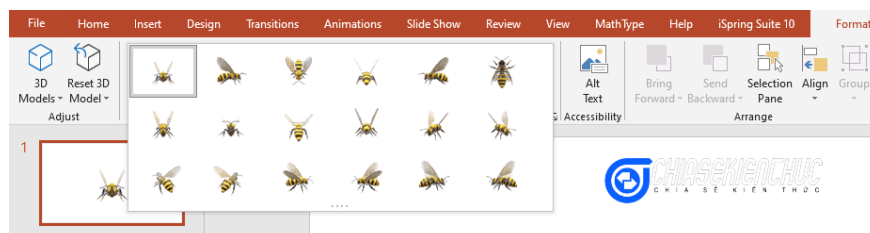
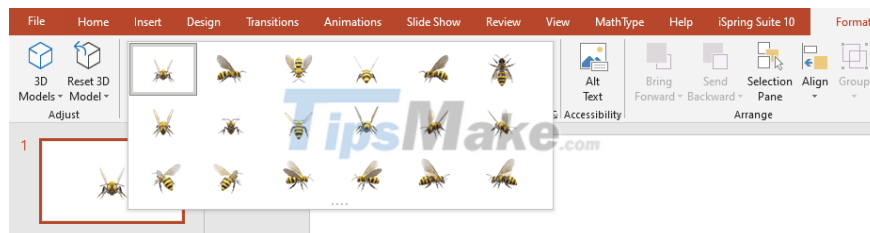
Method 1:

+ Step 1: Select the model.



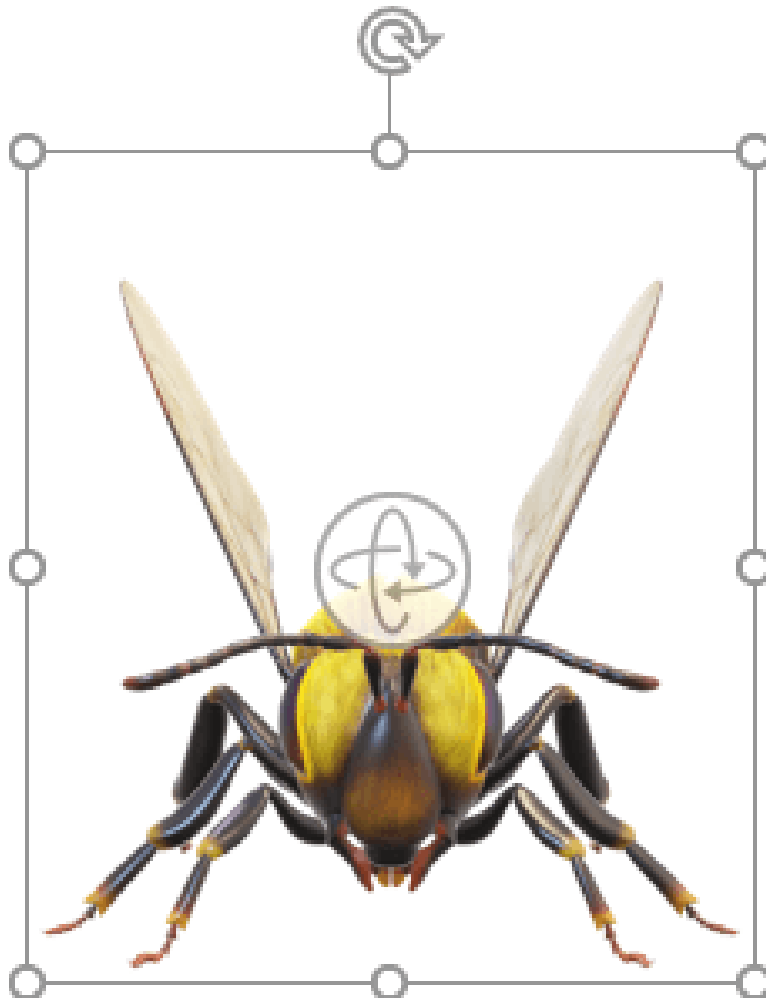
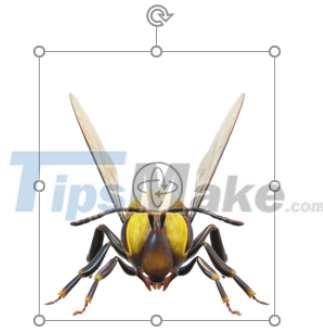


+ Step 2: The Format context card appears, in the 3D Model Views group, choose one of the 18 views that PowerPoint provides.

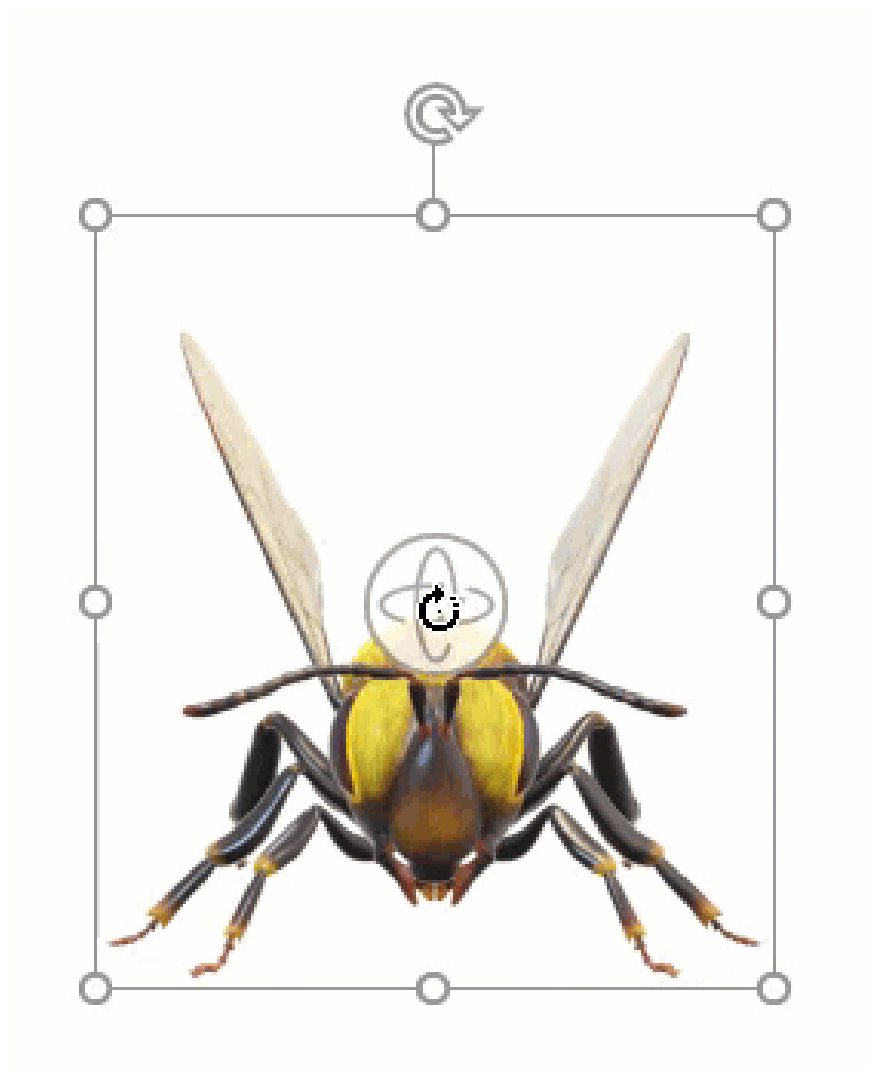


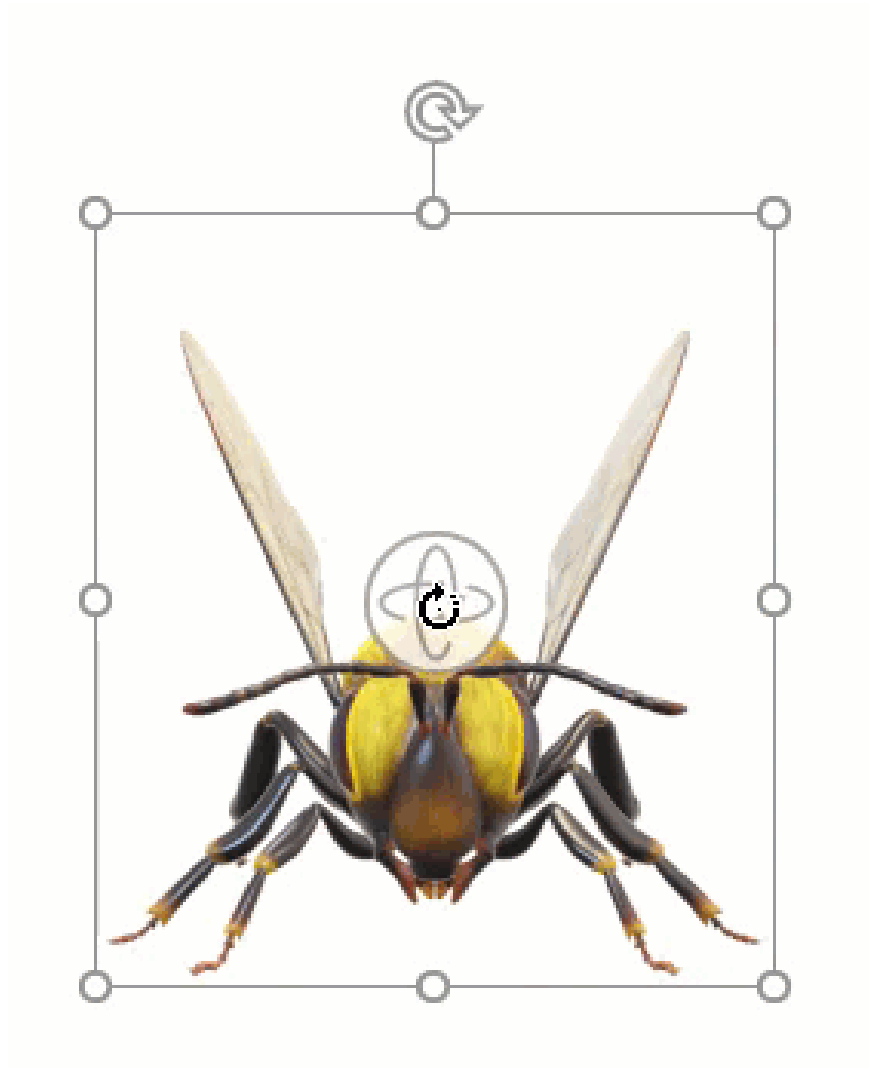
Method 2:

+ Step 1: Select the model.



+ Step 2: Rotate the 'round button' to any angle to obtain the corresponding viewing angle.





#3. Special effects exclusively for 3D models

As I introduced above, 3-D models not only have effects like regular objects but also have 5 more special effects: Arrive, Turntable, Swing, Jump & Turn and Leave

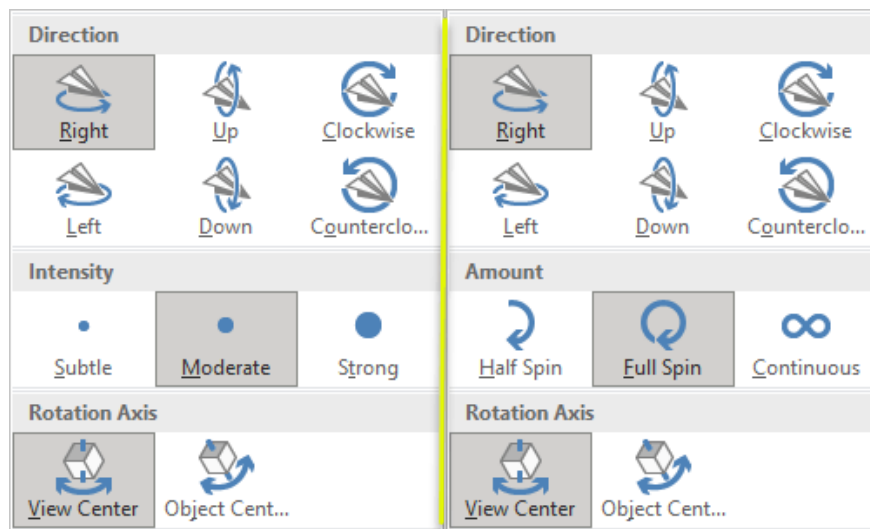
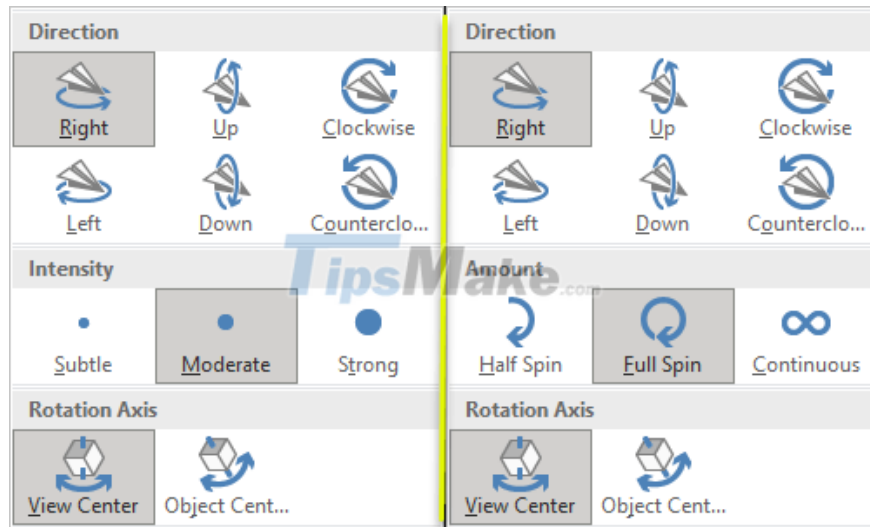


Effect name Effect group A description of the effect Arrive Entrance Rotate and gradually Turntable Emphasis Rotate around a preselected axis Swing Emphasis Swing gently from side to side Jump & Turn Emphasis Jump and rotate Leave Exit Fading and disappearing

Different effects will have different Effect Options. Therefore, in the brief scope of this article, I will only introduce briefly.

It is not possible to explain each option specifically because it is very verbose and confusing. Instead, you just need to try it a few times and you'll understand right away.

1. Direction direction.
2. Intensity intensity.
3. Rotation Axis Rotation Axis.
4. Amount

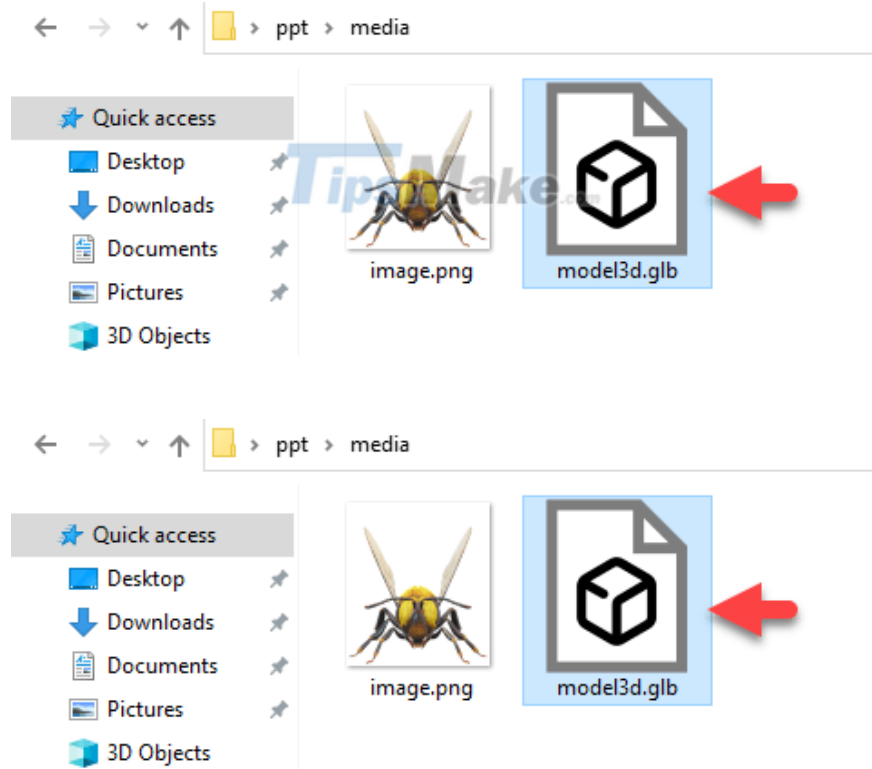


#4. Tips for downloading PowerPoint models to your computer

Models in the Microsoft library cannot be downloaded directly in the usual ways. Instead, you need to use special methods, below are the methods I usually use.

+ Step 1: Insert the models to be downloaded into PowerPoint Slide Sil

+ Step 2: Follow the instructions in the article [How to get pictures in Word, Excel and PowerPoint files?](#)



After downloading, you can view the model in supported software, or share it with friends or simply insert it into PowerPoint when there is no Internet connection.

If you are using Windows 10, you can view it with the available 3D Viewer software.

#5. Epilogue

Well, that's it, I've just guided you in detail on how to insert and animate 3D models in PowerPoint.

In order for 3D models to make full use of it, in addition to choosing the right model for the context of the presentation, you also need to choose and customize the effect accordingly.

In addition, we should not abuse inserting too many models into the presentation. This will make the PowerPoint file very heavy, even causing the computer to hang on weakly configured machines.

Okay, hope this article will be useful to you. Goodbye and see you in the next posts!

You finished reading the article "[Steps to Insert and Animate 3D Models in PowerPoint](#)" edited by the [TipsMake](#) team. We hope this article has provided you with many useful tech tips and tricks. You can search for similar articles on tips and guides. Thank you for reading and for following us regularly.