

Steps to fix Windows 10 crashes frequently

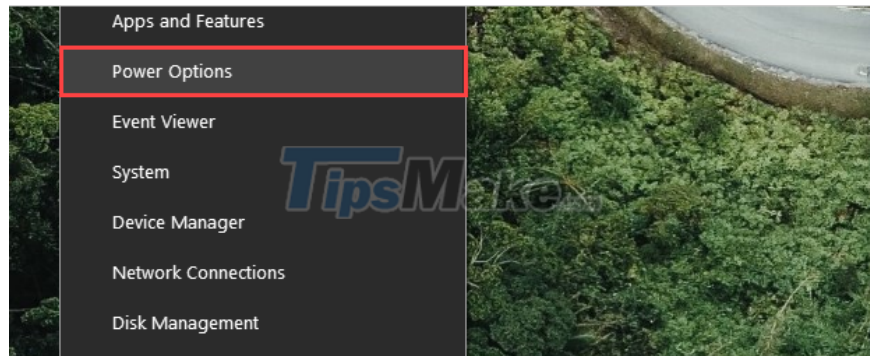
How to fix Windows 10 errors or crashes. Windows 10 computer crashes often appear and they can be fixed in a few ways as follows

Windows 10 is considered an operating system with stable performance, but they still inevitably hang, jerk, and lag. In fact, the computer crashes on Windows 10 often appear and they can be fixed in a few ways as follows:

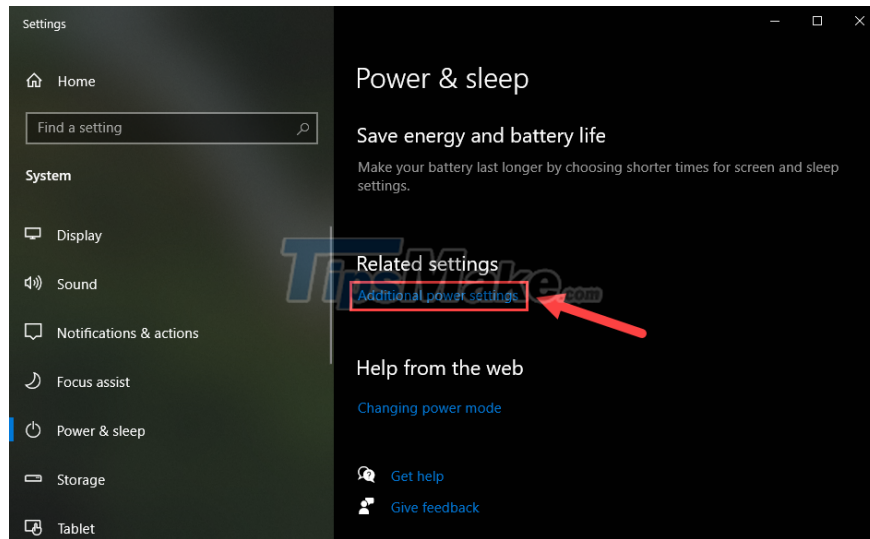
1. Turn off PCI-Express power saving feature

Power saving mode on Windows 10 is always on the list of things that cause crashes on the computer and to solve this error you need to do the following:

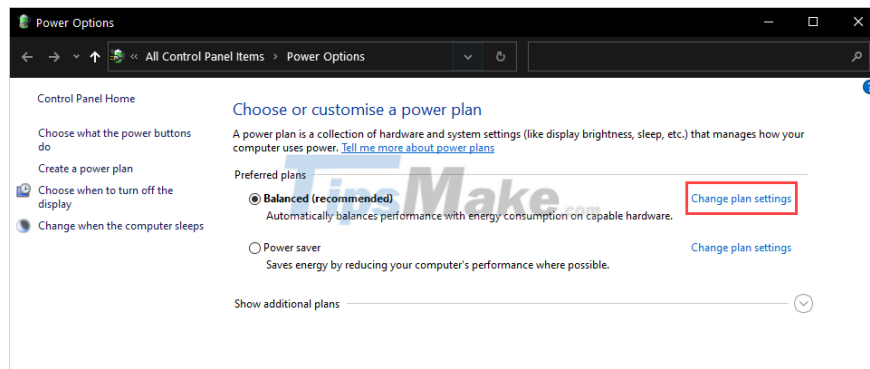
Step 1: First, right-click on the Start icon and select Power Options.



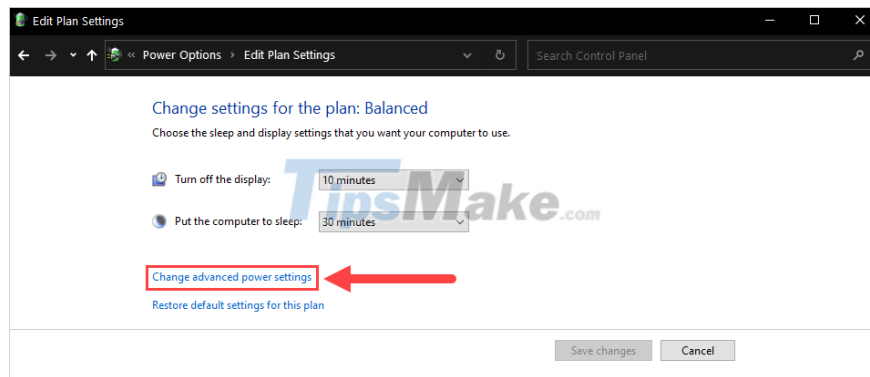
Step 2: When the Power & Sleep window appears, select Additional power settings.



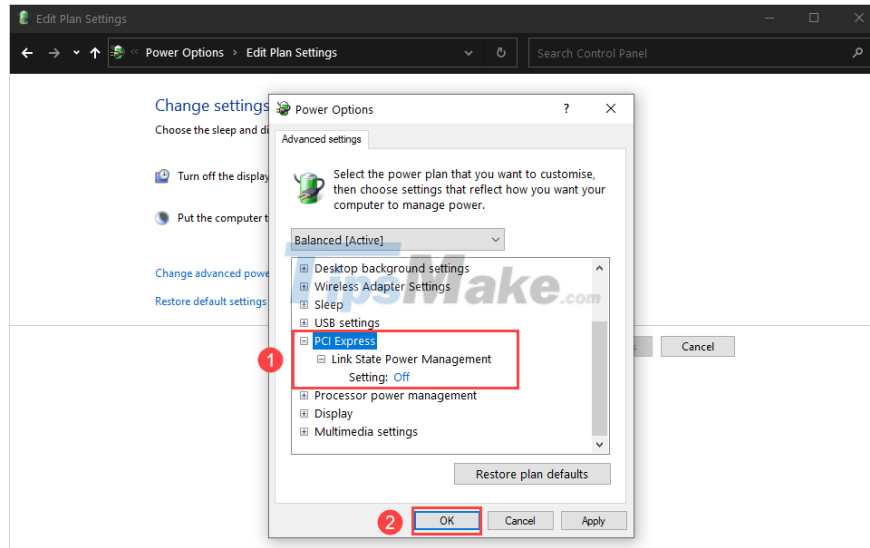
Step 3: To open energy-related settings, select Change plan settings.



Step 4: Next, select Change advanced power settings to open all energy-related settings.



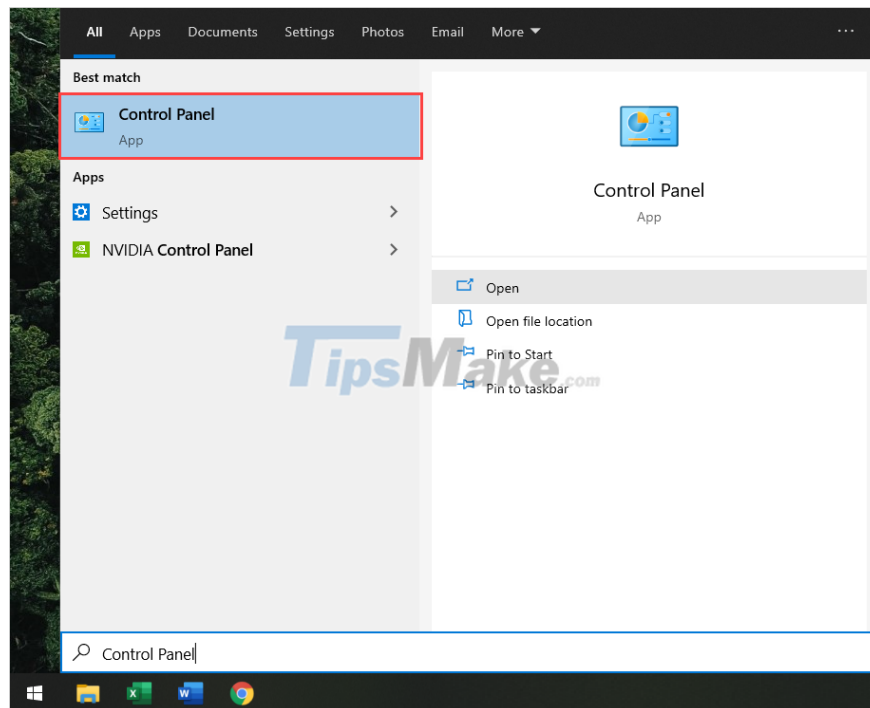
Step 5: Finally, go to the PCI Express section and proceed to change it to OFF for Settings - Link State Power Management.



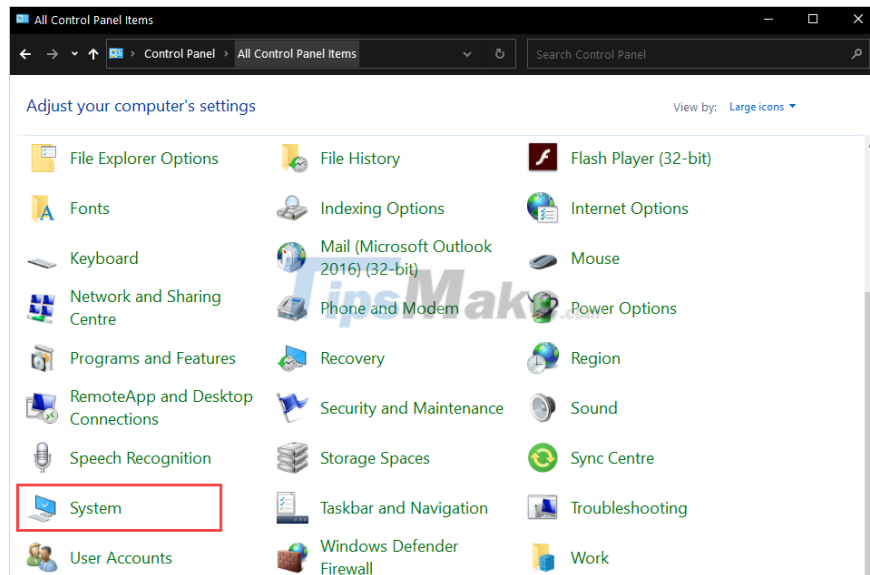
2. Turn off Windows 10's Auto Restart feature

In some cases, when the computer crashes, Windows will automatically activate Auto Restart and this is the cause of the whole Windows 10 operating system hanging by the application.

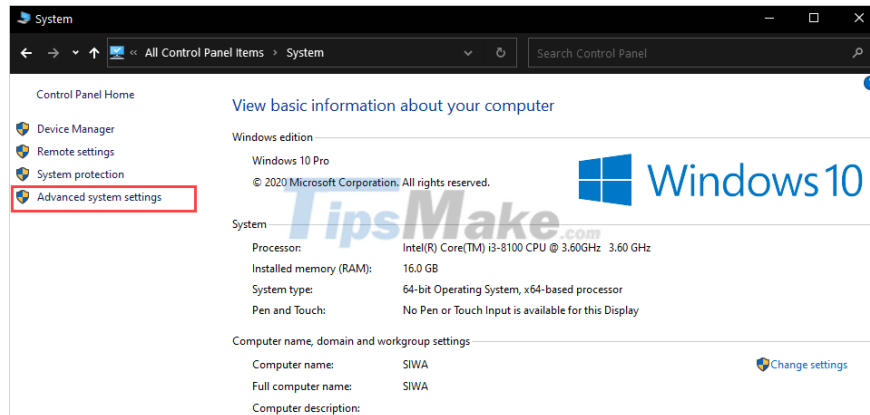
Step 1: At the main interface of the screen, open the Start Menu and enter Control Panel to open it.



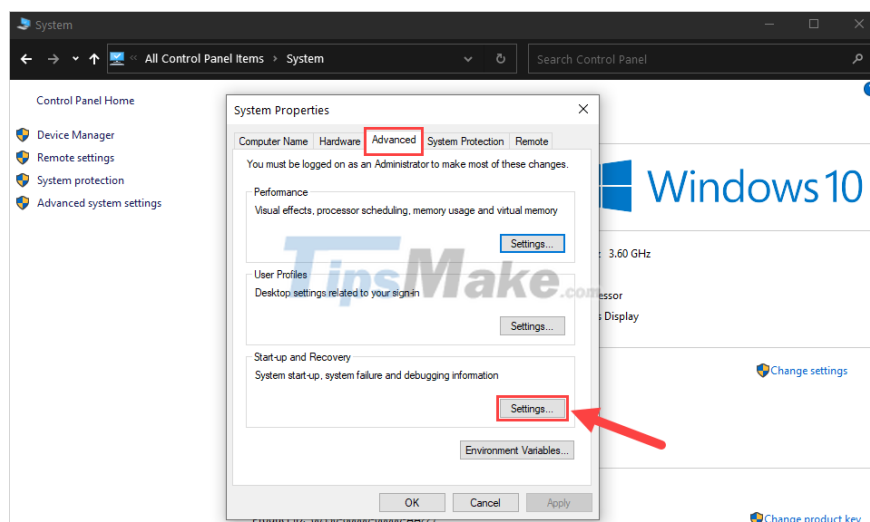
Step 2: In the Control Panel section, switch to View by: Large icons mode and proceed to select the System item.



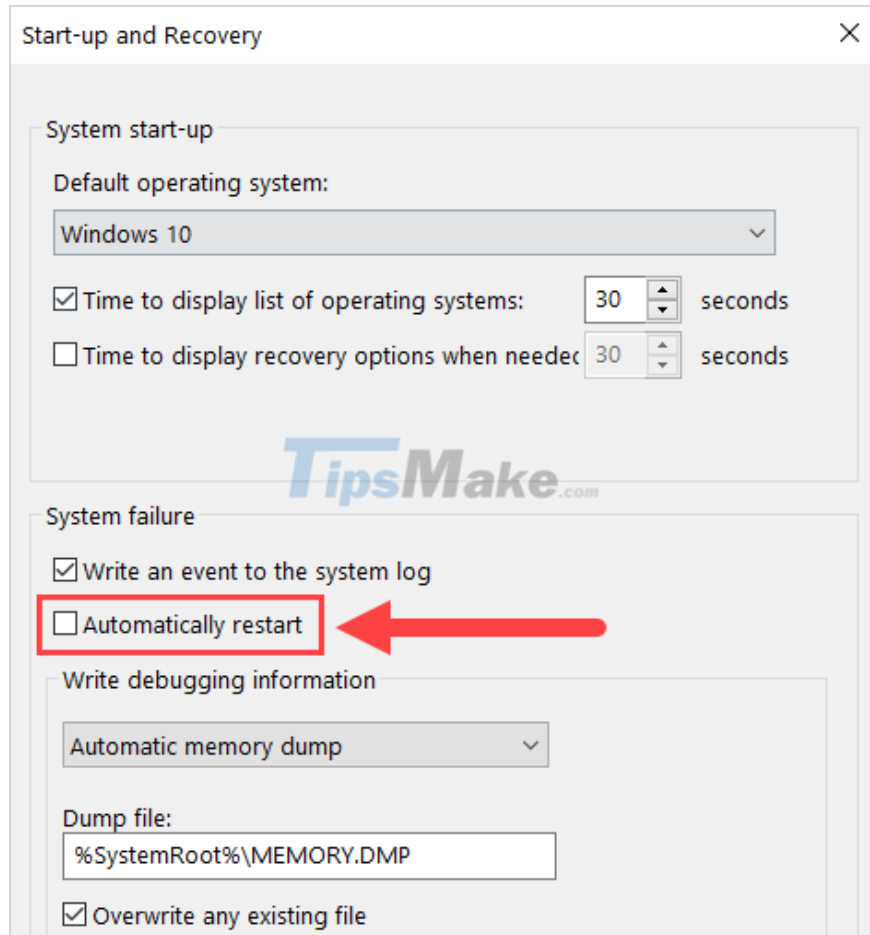
Step 3: Next, select the Advanced system settings tab to open system settings.



Step 4: When the System Properties window appears, select the Advanced tab and click the Settings... section of the Start-up and Recovery section.



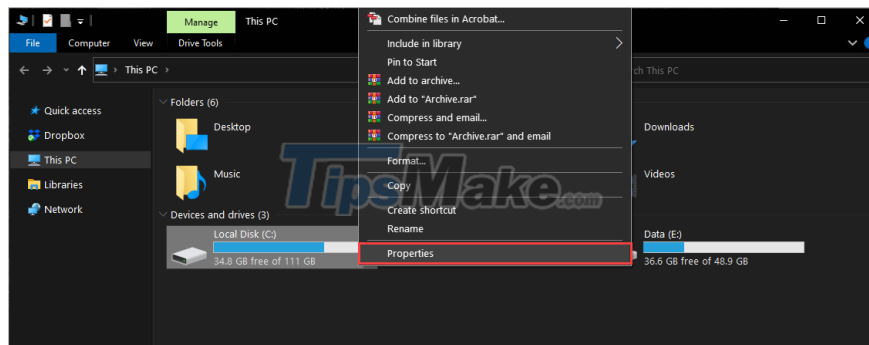
Step 5: In the Start-up and Recovery window, just uncheck the Automatically restart item and click OK to finish.



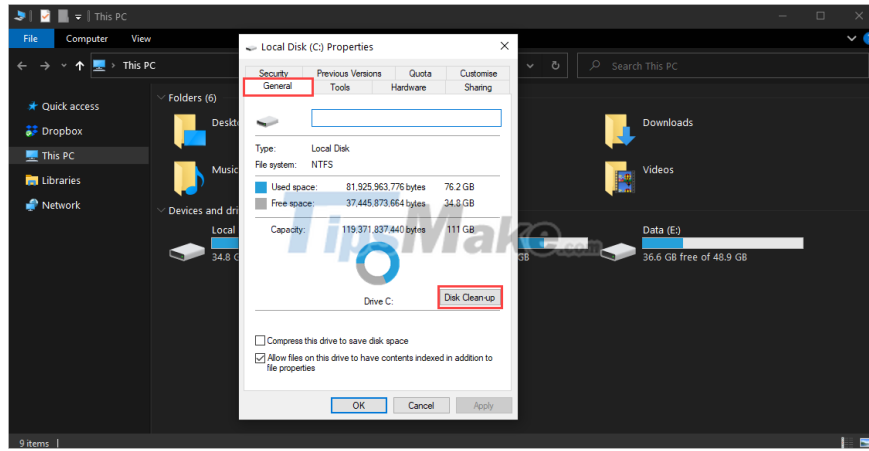
3. Clean up trash on Windows 10

After a long time of use, Windows 10 will generate a series of junk documents, the trash in the trash can not be deleted. This is the reason why your Windows 10 is slow and hangs.

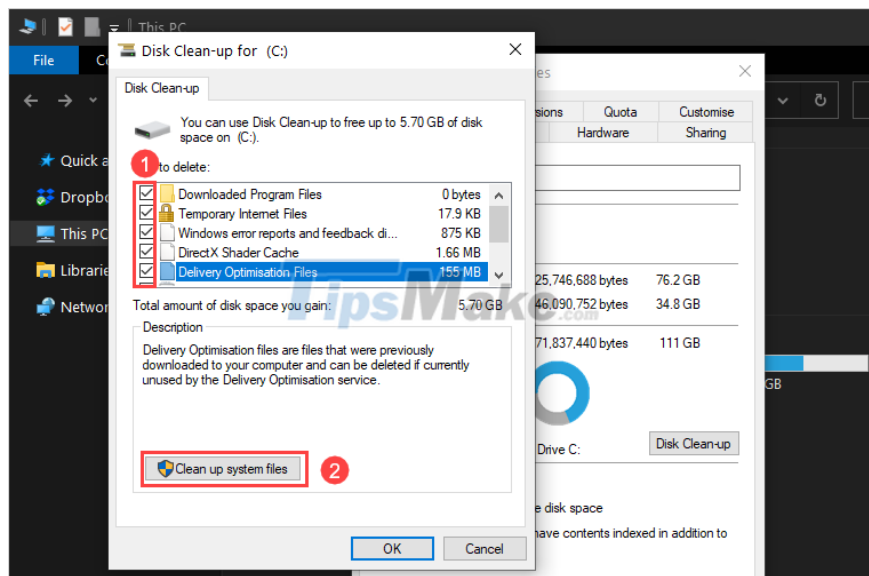
Step 1: First, you need to open This PC on your computer. Then, right-click the C: drive to select Properties.



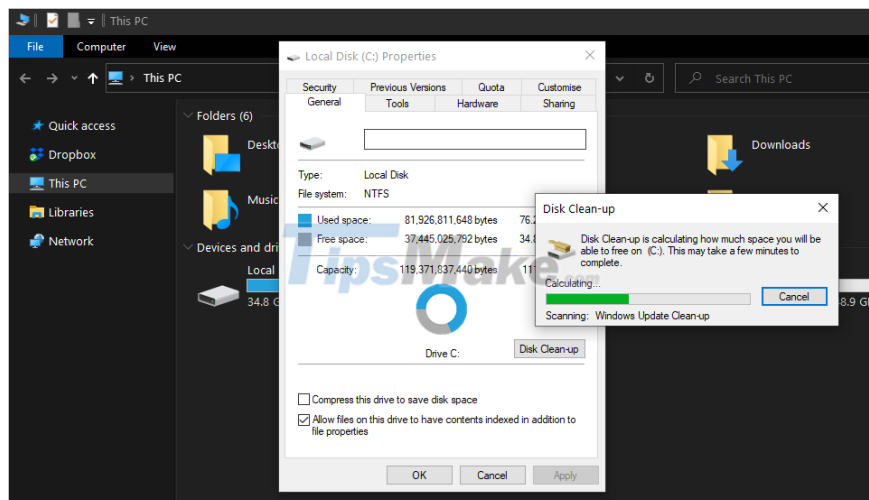
Step 2: Then, select the General tab and click Disk Clean-up to clean the drive.



Step 3: In the Disk Clean Up section, you proceed to tick all the items to delete (1) and select Clean up system files (2) to delete them.



Step 4: The system will automatically clean and delete all junk data on Windows 10 for you.



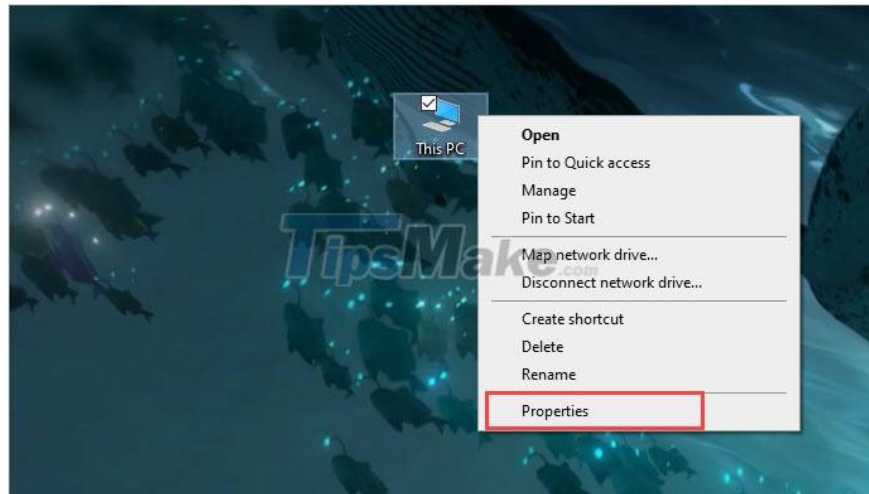
4. Use anti-virus software

Viruses are also one of the main causes of computer crashes on Windows 10 because when Viruses access the computer they will destroy files in the system. If Windows 10 cannot download the files in the system, by default they will hang because they do not know where to get the data to work next. Therefore, the removal and deletion of Viruses makes a very important contribution to limiting crashes, jerking lag. Articles related to Viruses Software tips have a lot, you can refer to more:

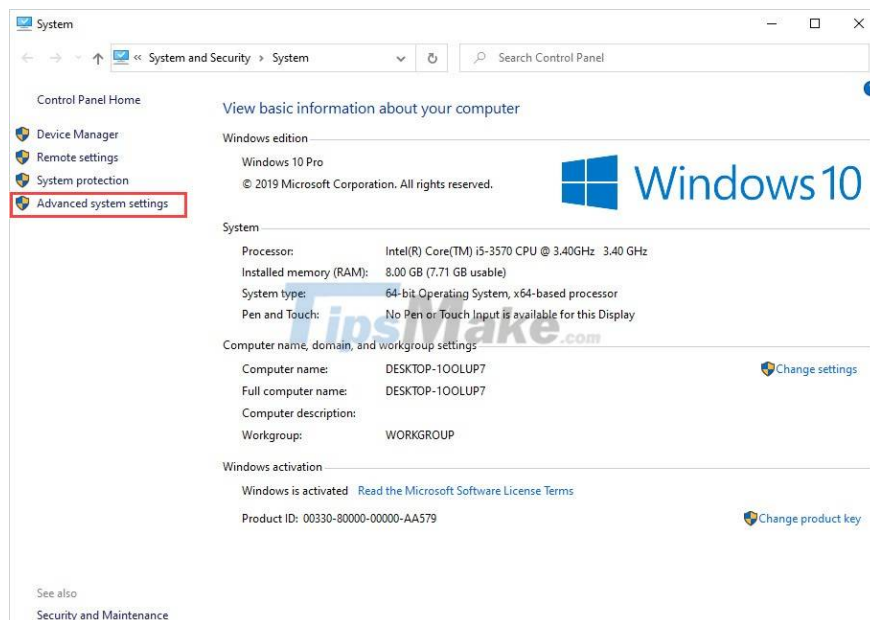
5. Increase Virtual RAM for Windows 10

Increasing the amount of virtual RAM on Windows 10 is a solution to help your computer improve performance much faster and achieve high efficiency during operation.

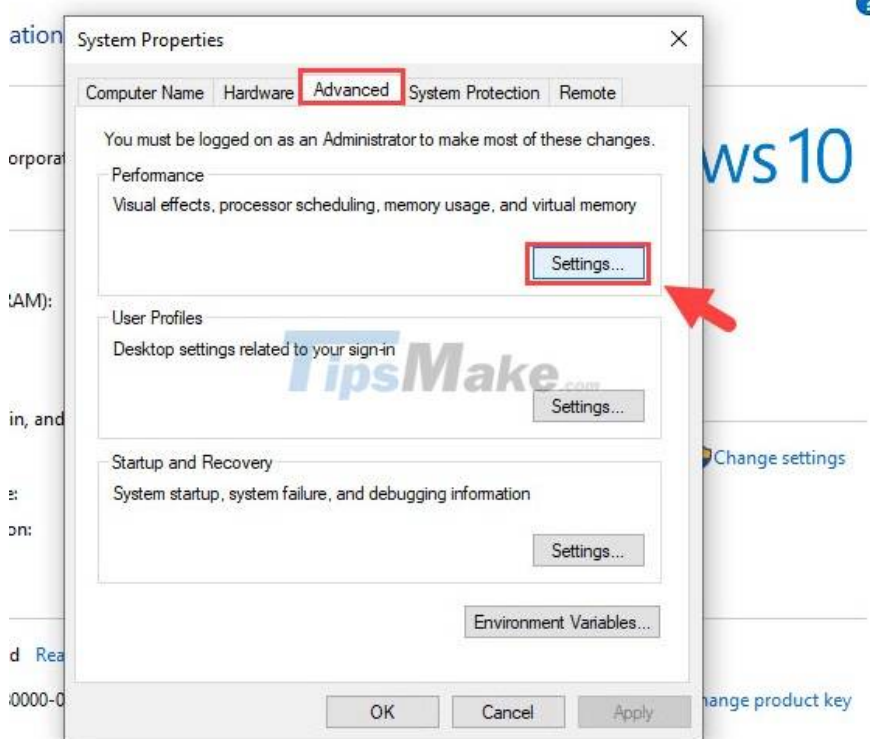
Step 1: First, right-click This PC and select Properties.



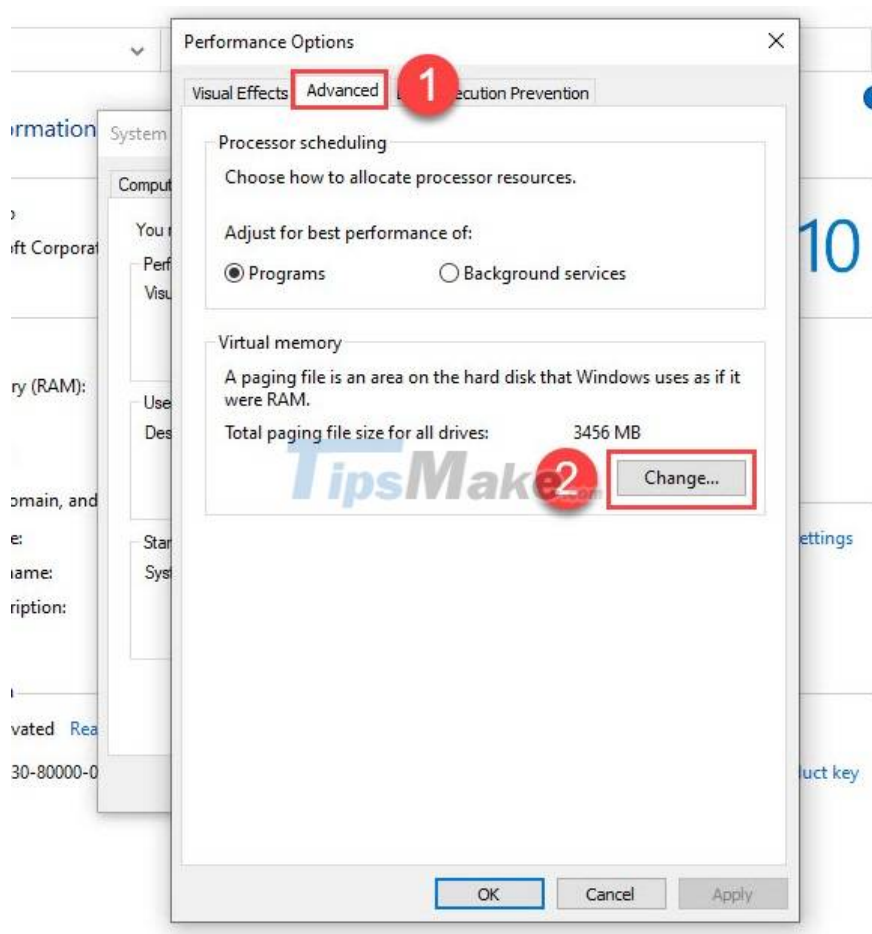
Step 2: Then, select the Advanced System Settings tab.



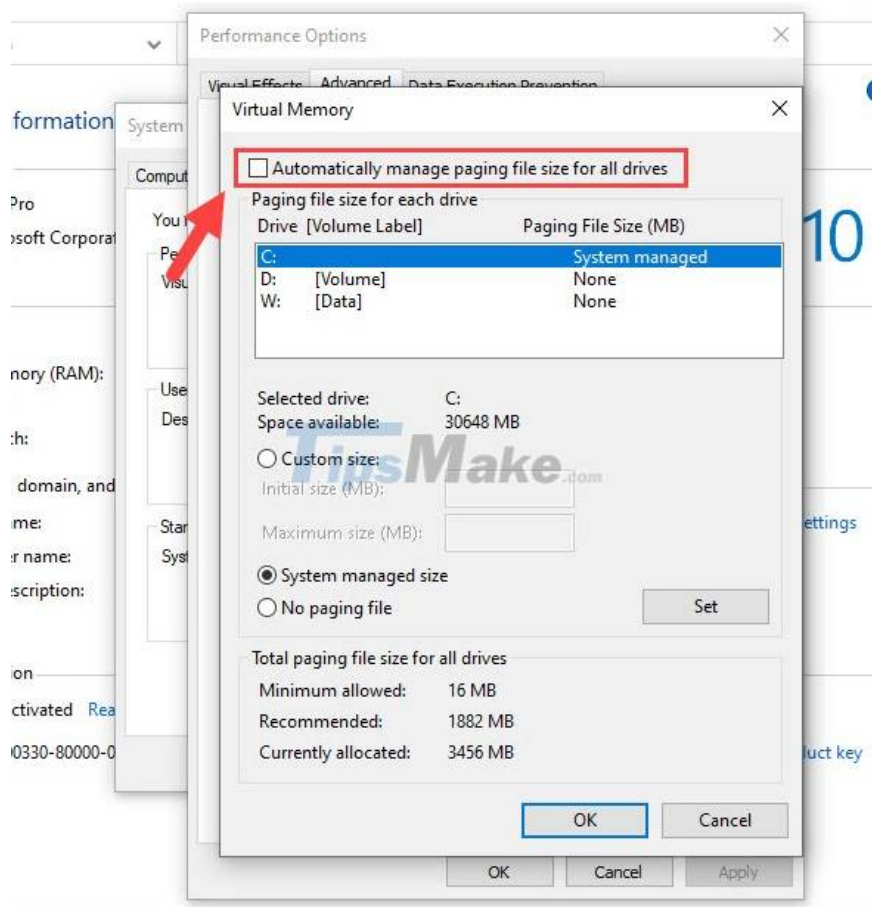
Step 3: Next, select Advanced and select the Settings section of the Performance section.



Step 4: At this point, you will see the Performance Options window appear. Here you select the Advanced tab and select Change... of the Virtual Memory section.



Step 5: By default, Windows 10 will turn on the automatic virtual RAM adjustment feature based on the machine configuration. So you have to uncheck the Automatically manage paging file size for all drives item to increase virtual RAM.



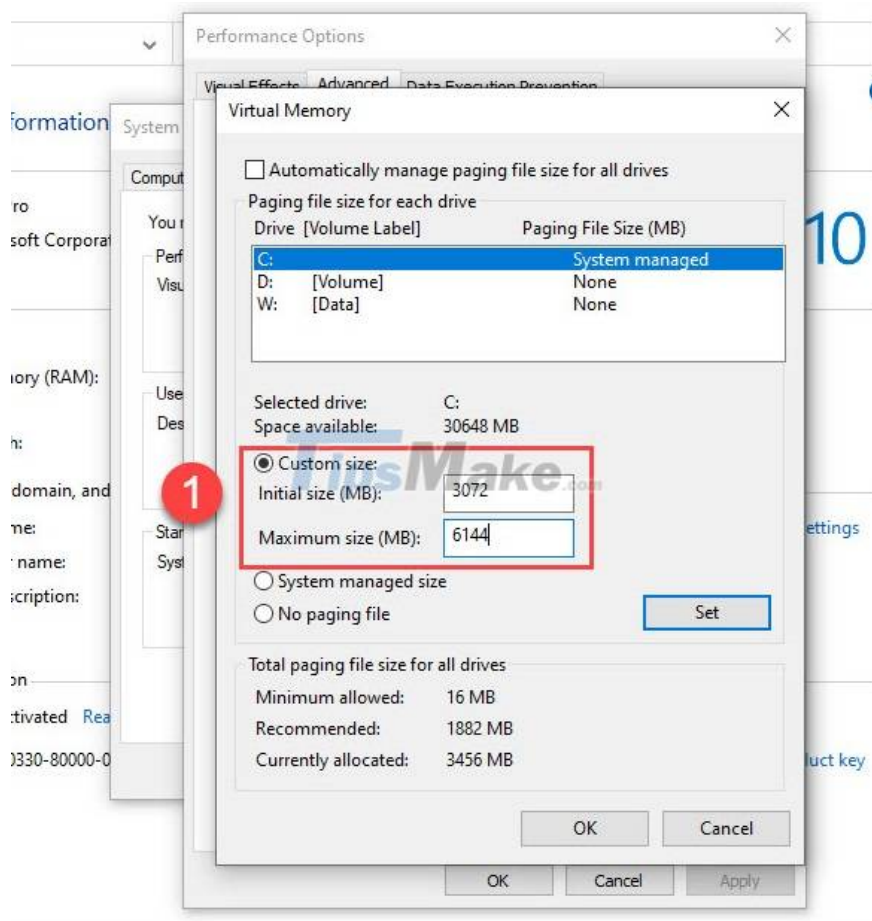
Step 6: Next, you choose Custom Size to set up virtual RAM as you like. Now we will have 02 items including: Initial Size and Maximum Size. To set the standard, we use the following formula:

Windows 10 32-bit, RAM capacity less than 4GB:

- Initial Size (MB): Get the actual amount of RAM (convert to MB) x 1.5
- Maximum Size (MB): Get the actual amount of RAM (convert to MB) x3

For example: Your computer uses Windows 10 32-bit, with 2GB of RAM

- Initial Size = RAM capacity (unit: GB) x 1024 (to convert to MB) x 1.5 = 2 x 1024 x 1.5 = 3072 MB
- Maximum Size = RAM capacity (unit: GB) x 1024 (to convert to MB) x 3 = 2 x 1024 x 3 = 6144 MB

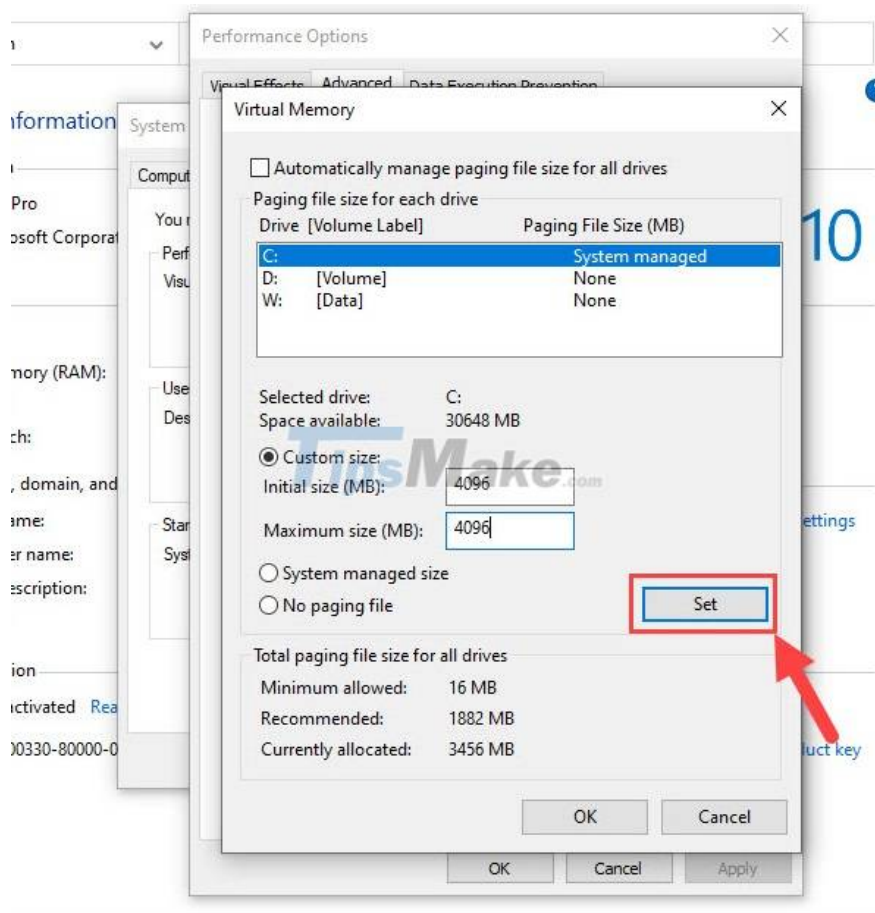


Windows 10 64-bit, 4GB RAM or more:

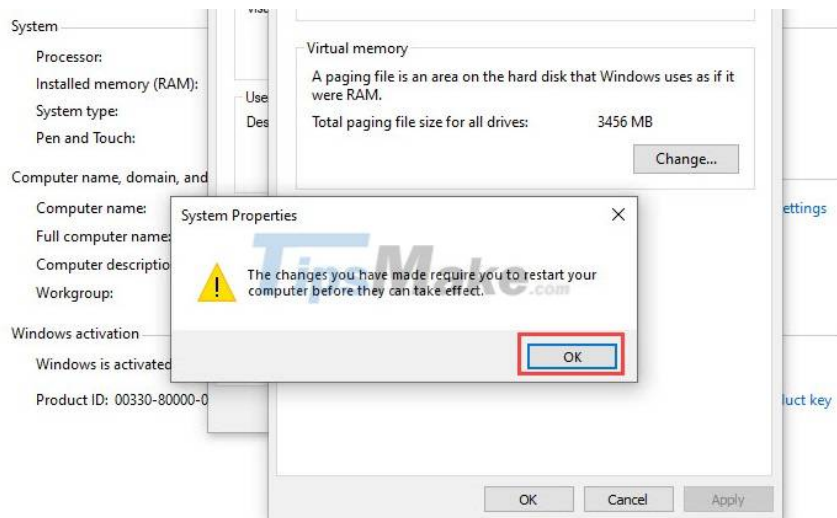
- Initial Size (MB): Get the actual amount of RAM (convert to MB) :2
- Maximum Size (MB): Get the actual amount of RAM (convert to MB) :2

For example: Your computer uses Windows 10 64-bit, with 8GB of RAM

- Initial Size = RAM capacity (unit: GB) x 1024 (to convert to MB) : 2 = 8 x 1024 : 2 = 4096 MB
- Maximum Size = RAM capacity (unit: GB) x 1024 (to convert to MB) : 2 = 8 x 1024 : 2 = 4096 MB



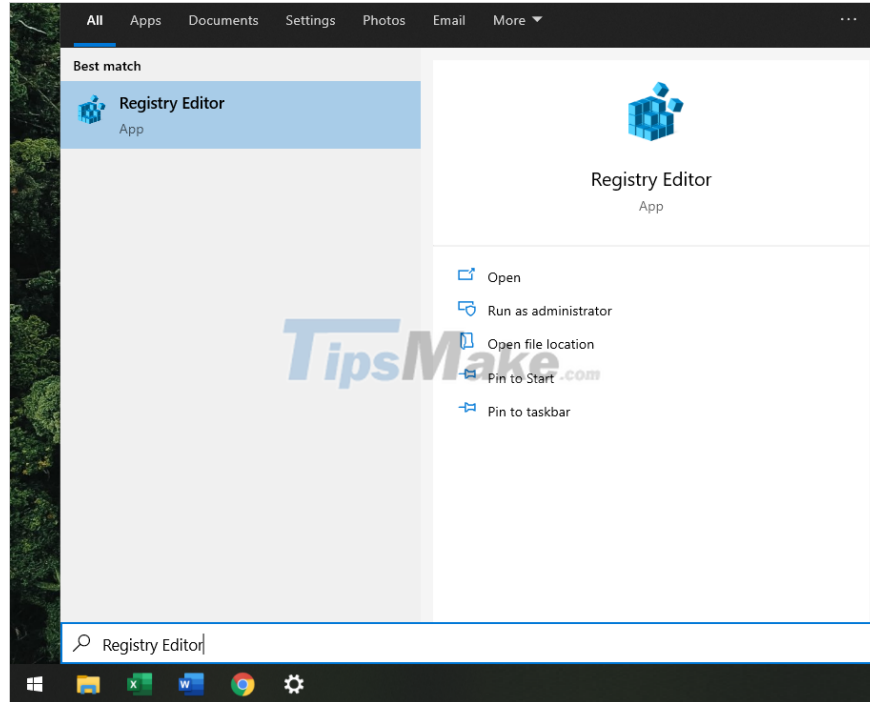
After you have set up the amount of RAM, you choose Set to save these parameters. At this point, there will be a notification window that the computer will need to restart to change the above parameters. You click OK to proceed to Restart the computer automatically.



6. Disable AppXsvc

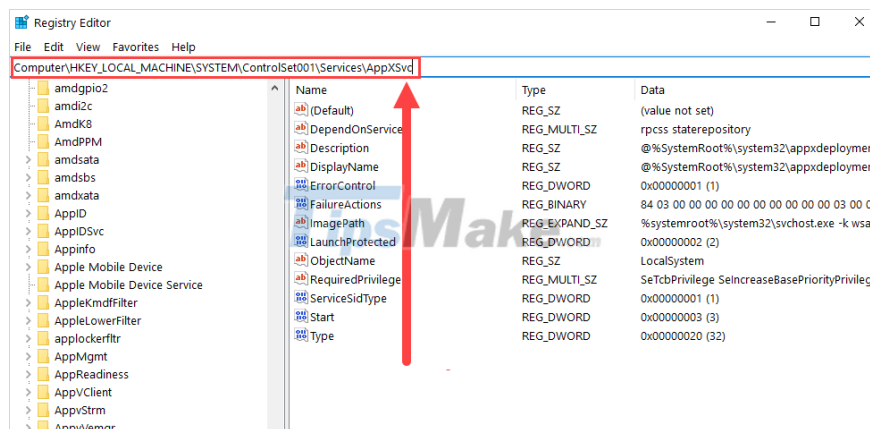
The final method to limit computer crashes on Windows 10 is to turn off the AppXsvc service, which is an unnecessary feature on Windows 10.

Step 1: You proceed to open the Start Menu and enter Registry Editor to open.

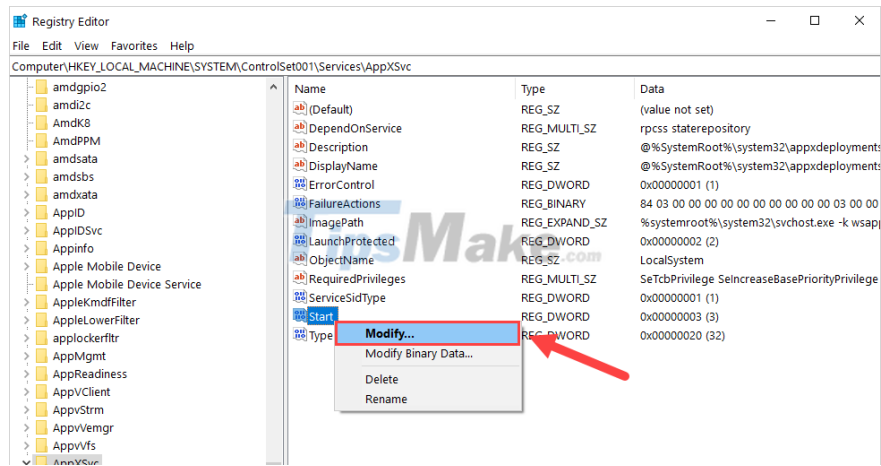


Step 2: Then, you proceed to copy the entire path below and paste it into the navigation bar to move to the folder to work.

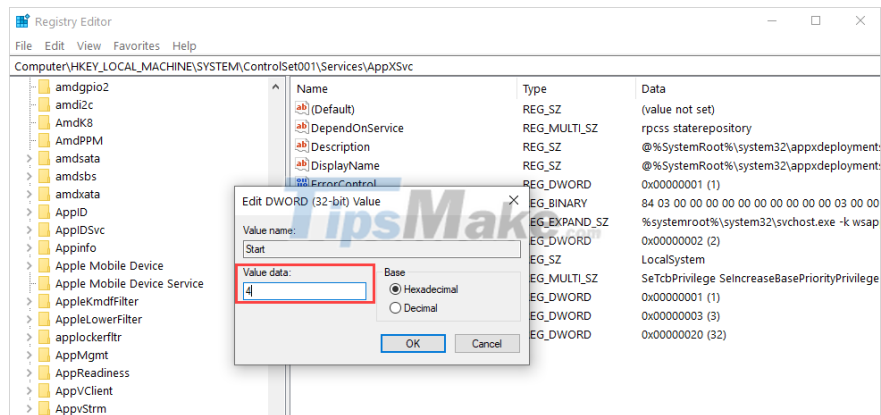
HKEY_LOCAL_MACHINE\SYSTEM\ControlSet001\Services\AppXSvc



Step 3: Next, right-click on the Start item and select Modify.



Step 4: In the editing window, proceed to enter Value data to 4 and click OK to complete. Finally, please restart your computer.



In this article, TipsMake has shown you how to fix Windows 10 computer crashes quickly and effectively. Have a nice day!

You finished reading the article "**Steps to fix Windows 10 crashes frequently**" edited by the [TipsMake](https://www.tipsmake.com) team. We hope this article has provided you with many useful tech tips and tricks. You can search for similar articles on tips and guides. Thank you for reading and for following us regularly.