

# Steps to fix Windows 10 can't connect headphones

Most home setups require the user to use a headset to make Zoom and Google Meet calls seamless. Gamers and music enthusiasts alike opt for headphones to get through a long day.

But sometimes, Windows 10 can make you have trouble connecting your headset to your laptop or PC. Read the following article to learn how to fix the Windows 10 headset detection problem!

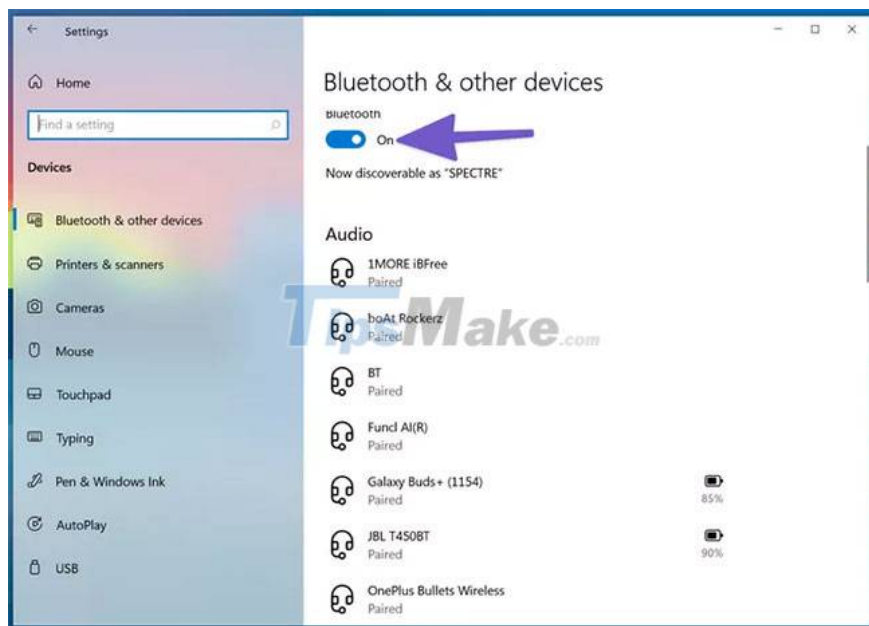
## 1. Check the audio jack

Thankfully, the tradition of removing the headphone jack has yet to make it to Windows 10 laptops. Most Windows 10 machines include a headphone jack for seamless audio output.

Before jumping to more advanced troubleshooting options, you can first check the 3.5mm audio jack on your Windows 10 computer. Make sure that the cable is connected properly for the headset to be detected. success.

## 2. Check Bluetooth connection

If you are using a wireless Bluetooth headset, you need to make sure that Bluetooth is enabled on Windows 10. Open the Settings app on Windows 10 (using **Windows key + I**) and go to **Devices > Bluetooth & other devices** and enable **Bluetooth** up.



You can also remove the headset from the saved Bluetooth device list menu and reconnect it.

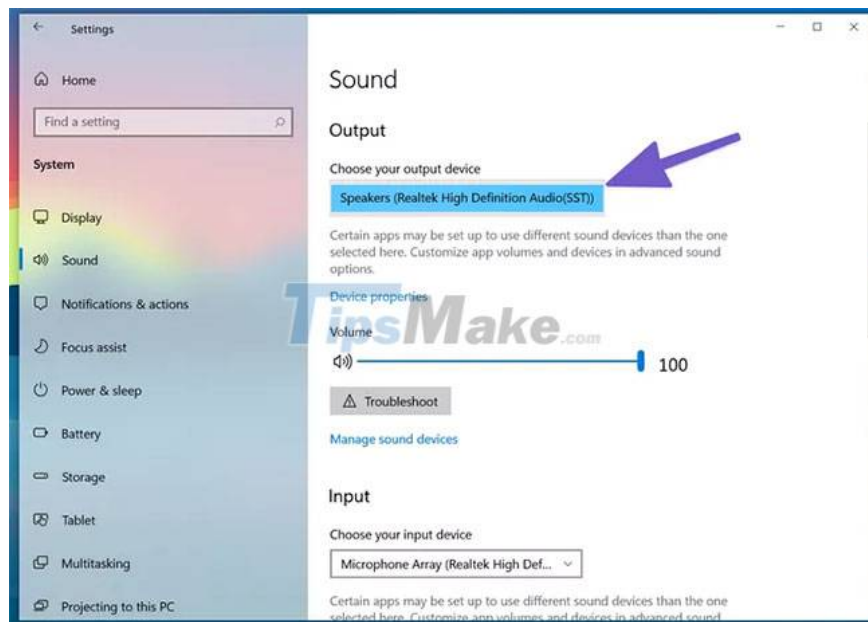
### 3. Check Output Devices on Windows 10

You can select/change the default audio playback device on Windows 10. Here's how.

**Step 1** : Find the small sound icon on the Taskbar.

**Step 2** : Right click on it and select **Open Sound settings** .

**Step 3** : In the **Choose your output device section** , select the connected headset and you're good to go.



### 4. Check the headset

Most headphones have a physical mute button for convenience. If you have accidentally touched it, then you will not get any audio output. Consider turning off the mute button on your headphones and enjoy the perfect sound.

### 5. Check out the volume control features

You need to check the mute button and volume control options on your keyboard to see if they are in proper headphone function on Windows 10.

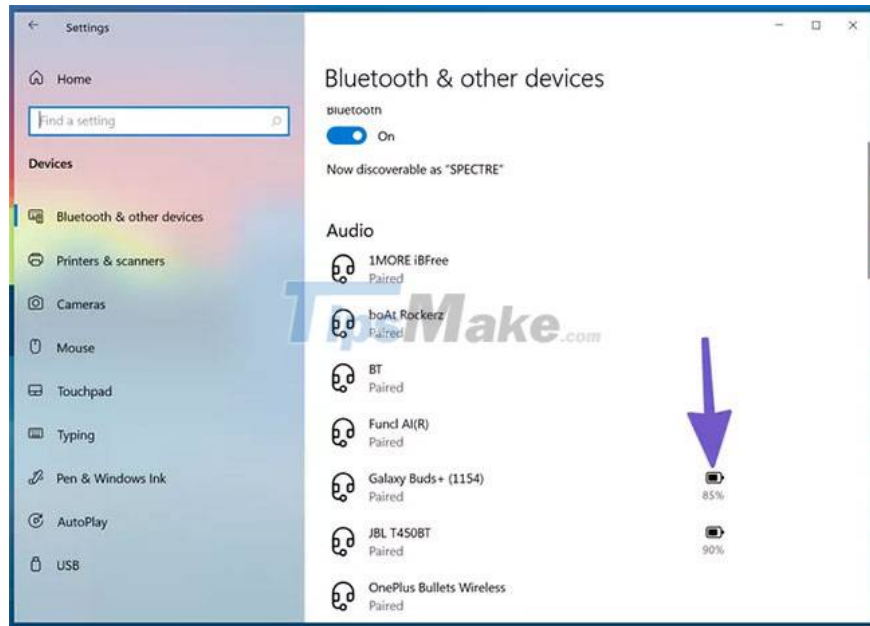
### 6. Check headphone battery

Windows 10 operating system is smart enough to show the remaining battery life on the connected device. Here's how to check it.

**Step 1** : Open the **Settings** app on Windows 10 ( **Windows + I** ).

**Step 2** : Go to the **Devices** menu .

**Step 3** : Open the **Bluetooth** menu and the currently connected devices will be displayed.



**Step 4** : Notice the remaining battery life indicator next to it. If it's less than 20%, consider charging the battery or using the headphones in wired mode.

## 7. Select output device in video calling application

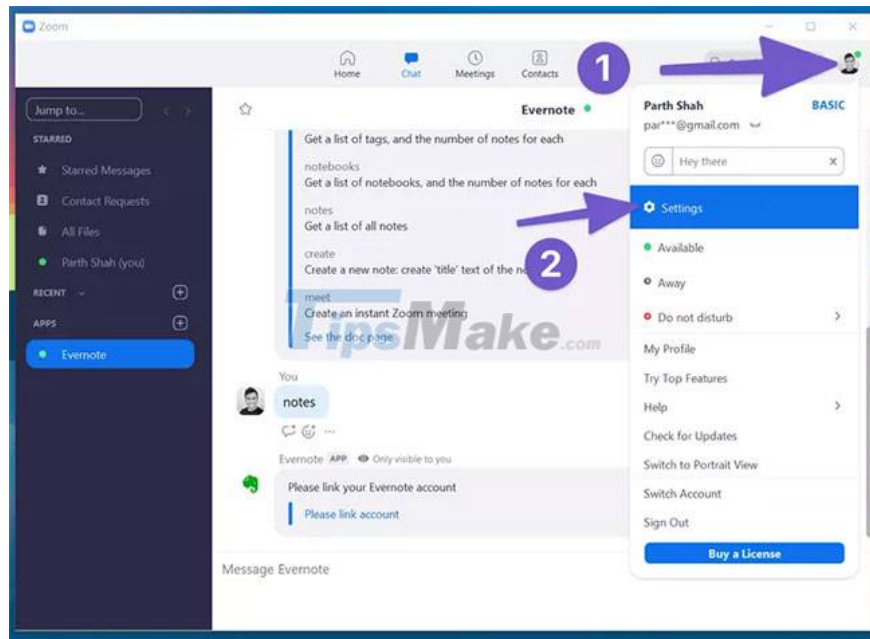
Most online meeting apps like Zoom, Microsoft Teams, and Google Meet allow you to select a specific audio output device from the settings menu. If you have selected the wrong output device, you will not hear anything from the connected headphones.

Let's take Zoom as an example here.

**Step 1** : Open the **Zoom** application on your Windows 10 device.

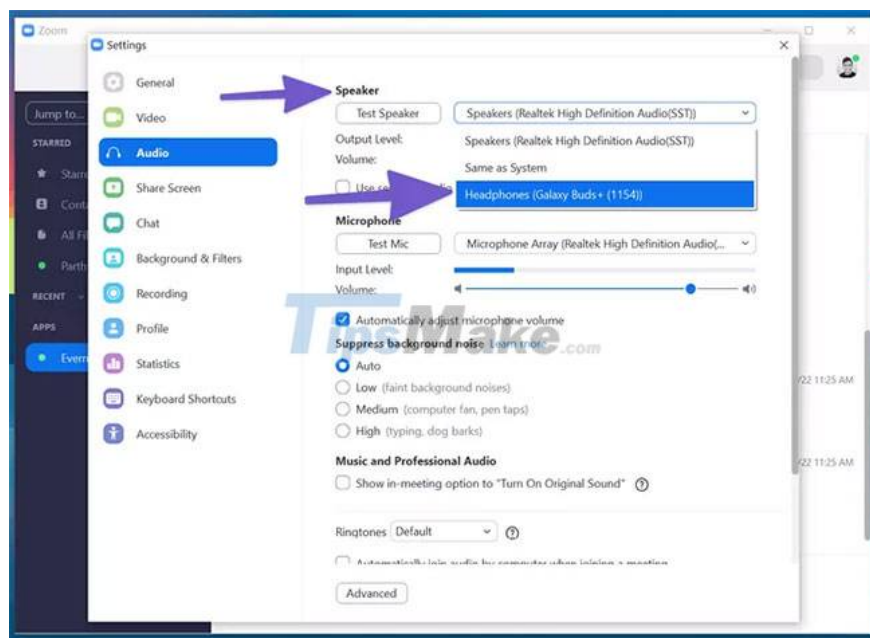
**Step 2** : Click on the profile menu in the upper right corner.

**Step 3** : Select **Settings** from the following menu.



**Step 4 :** Go to the **Audio** menu .

**Step 5 :** In the **Speakers and Microphone** menu , select the connected headset as the output device.



You can make the same changes in the Microsoft Teams and Google Meet settings menu, and then select the connected headset at the output device.

## 8. Use the Windows 10 troubleshooter

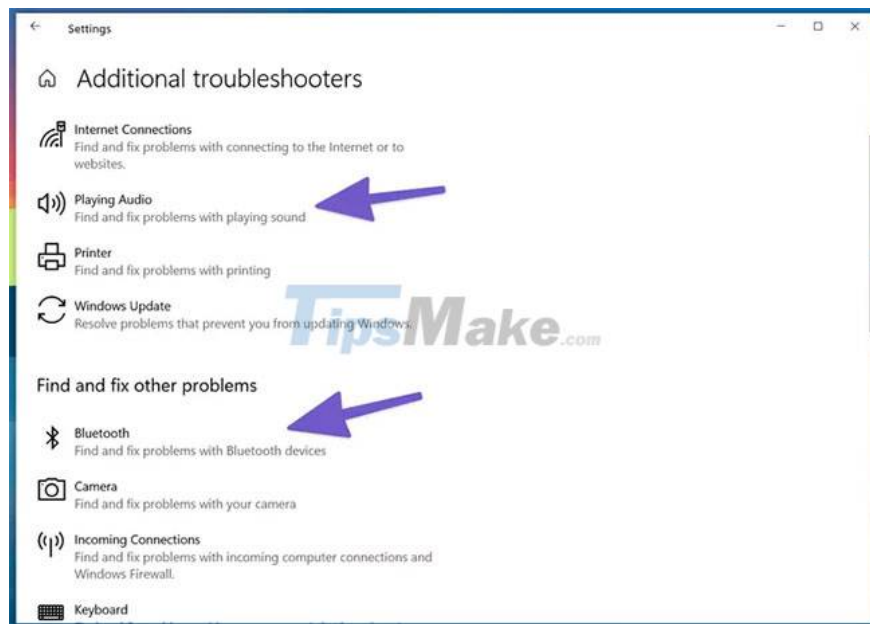
The default Windows 10 troubleshooter can fix annoying Bluetooth and audio related issues on the device. Here's how to use it.

**Step 1 :** Open the Settings app on the device.

**Step 2 :** Go to **Update & Security > Troubleshoot** menu .

**Step 3 :** Select **Additional Troubleshooter** .

**Step 4 :** Fix the problem of headphones not detecting with the **Playing audio** troubleshooter .



If this doesn't fix the problem, use the Bluetooth troubleshooter and reconnect the headset.

## 9. Update audio driver driver

Outdated audio drivers can mess up headset detection on Windows 10. You can update the relevant driver from the Device Manager app on Windows 10. Follow the steps below.

**Step 1 :** Press the Windows key on your keyboard and search for **Device Manager**.

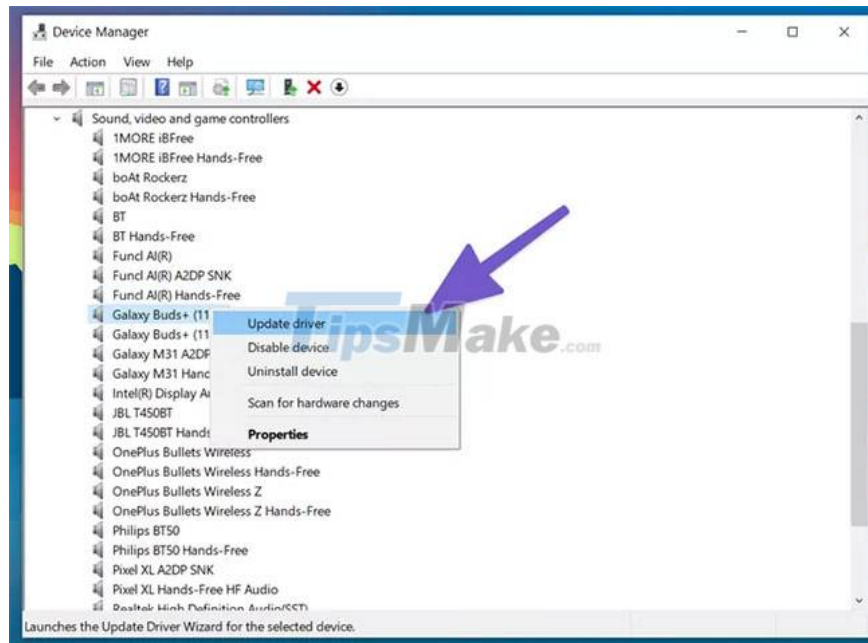
**Step 2 :** Open the Device Manager menu.

**Step 3 :** Scroll down to **Sound, video, and game controllers** .

**Step 4 :** Expand the menu and you will see the connected headsets from the list.

**Step 5 :** Find the headset you want to connect and right click on it.

**Step 6 :** Select **Update drivers** from the following menu.



Windows 10 will download and install the latest relevant drivers from the web.

You finished reading the article "**Steps to fix Windows 10 can't connect headphones**" edited by the [TipsMake](#) team. We hope this article has provided you with many useful tech tips and tricks. You can search for similar articles on tips and guides. Thank you for reading and for following us regularly.