

Steps to fix WiFi error that keeps disconnecting on Windows 10,8,7

Guide you how to fix the WiFi error that keeps disconnecting on Windows 10,8,7 to help the device reconnect to WiFi and use it normally.

The fact that your laptop often short itself from continuous WiFi connection is one of the extremely annoying errors and greatly affects your work, study, and entertainment games. So how to fix this error, please refer to the article below to know how to fix WiFi error that keeps disconnecting on Windows 10, 8, 7 simply.

1. Cause WiFi disconnects itself on Windows 10, 8, 7

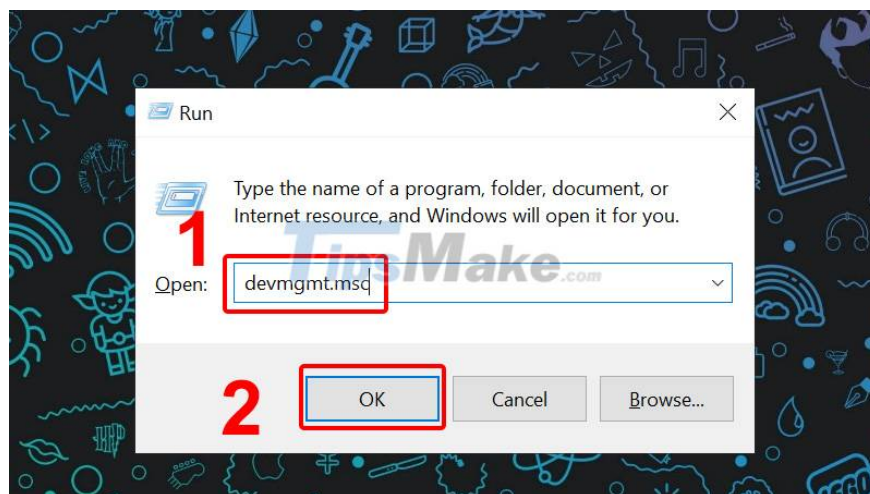
1. During use, you may have changed the configuration inside the machine.
2. Because your device lacks a WiFi driver, the network connection is interrupted.
3. Because the hardware is too old and faulty often appears on old laptops.

2. How to fix WiFi keeps disconnecting on Windows 10, 8, 7

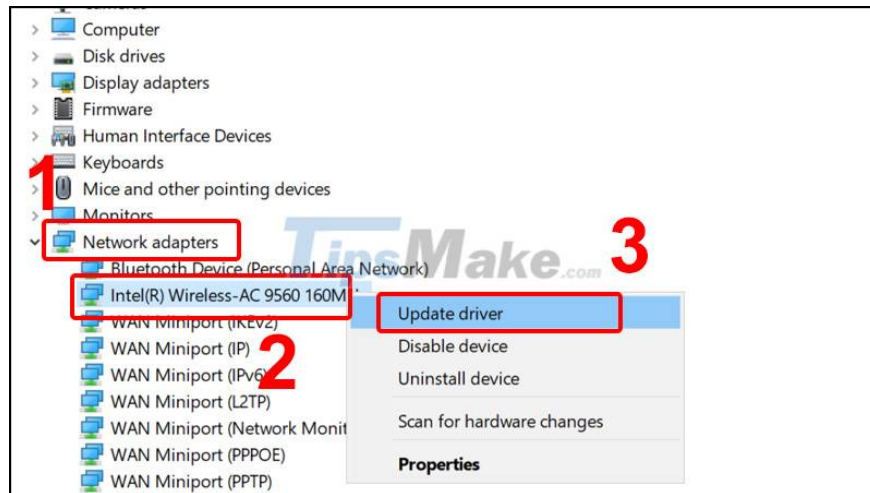
Latest WiFi Update

Step 1: Press the Windows + R key combination to open the RUN dialog box.

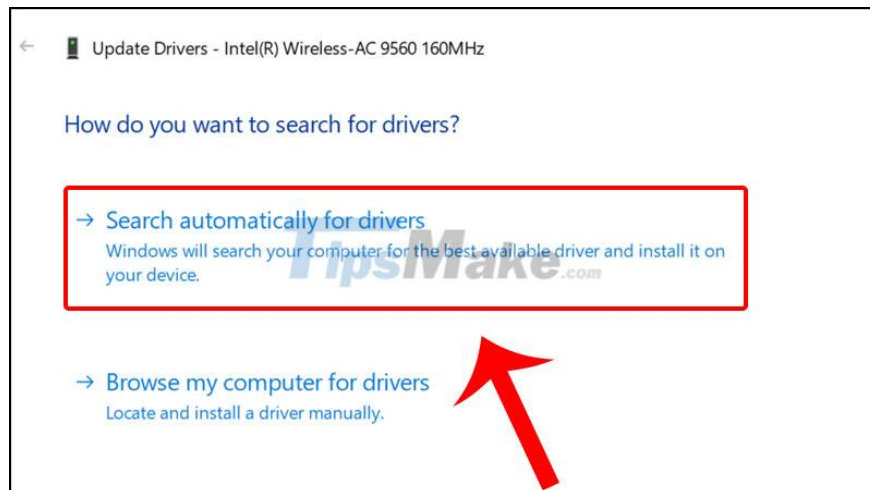
Step 2: Enter the command "devmgmt.msc" > Click OK.



Step 3: Expand Network adapters > Click on the Adapter in use > Click Update driver.



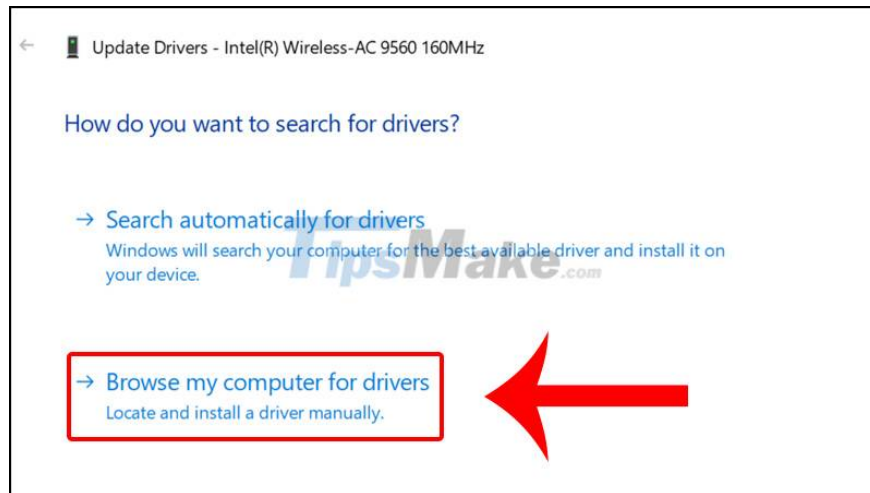
Step 4: Click Search automatically for updated driver software.



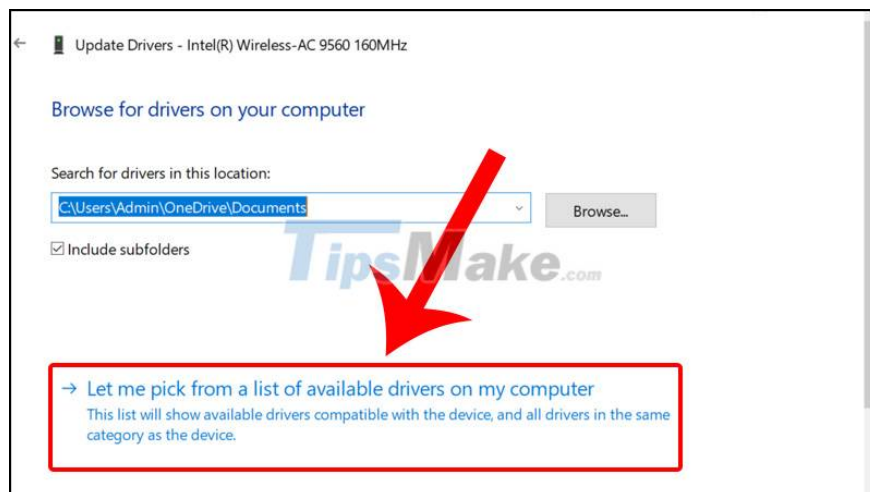
Wait for the update to complete and restart your computer to see the results.

If it still doesn't work, do the following:

Step 5: Select the second item Browse my computer for driver software.



Step 6: Click Let me pick from a list of device drivers on my computer.



Step 7: Select the appropriate Driver > Click Next.

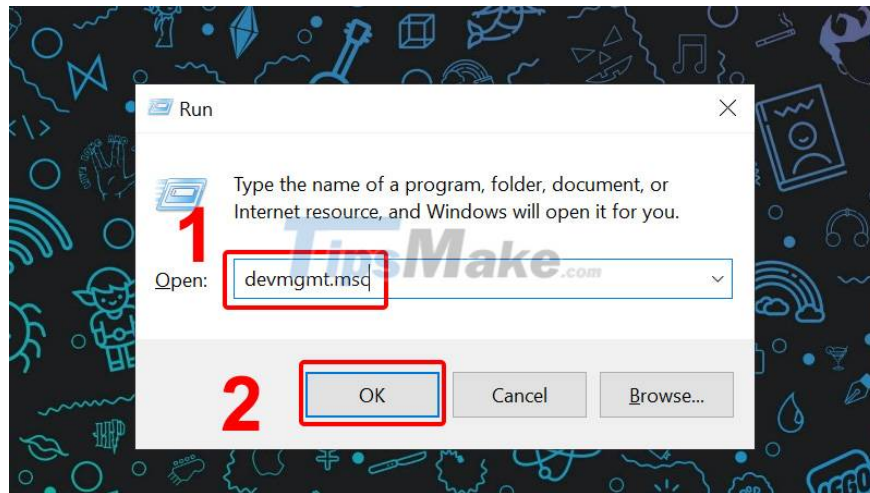


The driver update process is finished, please restart the computer and see the results.

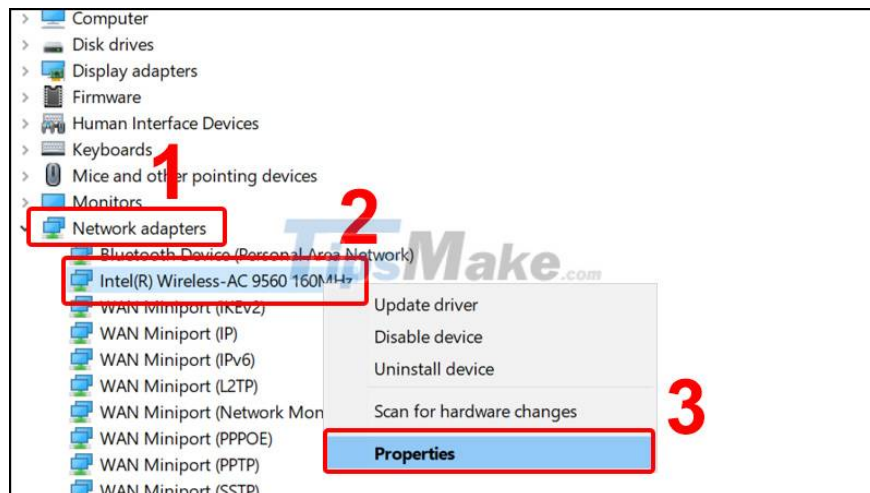
Edit Power Management Settings

Step 1: Press the Windows + R key combination to open the RUN dialog box.

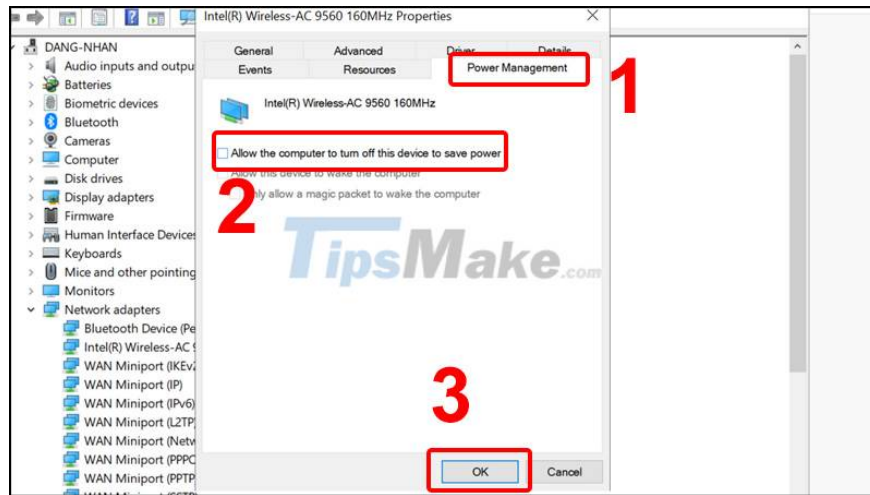
Step 2: Enter the command "devmgmt.msc" > Click OK.



Step 3: Expand Network adapters > Click on the Adapter in use > Click Properties.



Step 4: In the Power Management tab > Uncheck Allow the computer to turn off this device to save power > Click OK and close Device Manager.



Change Home Network from Public to Private

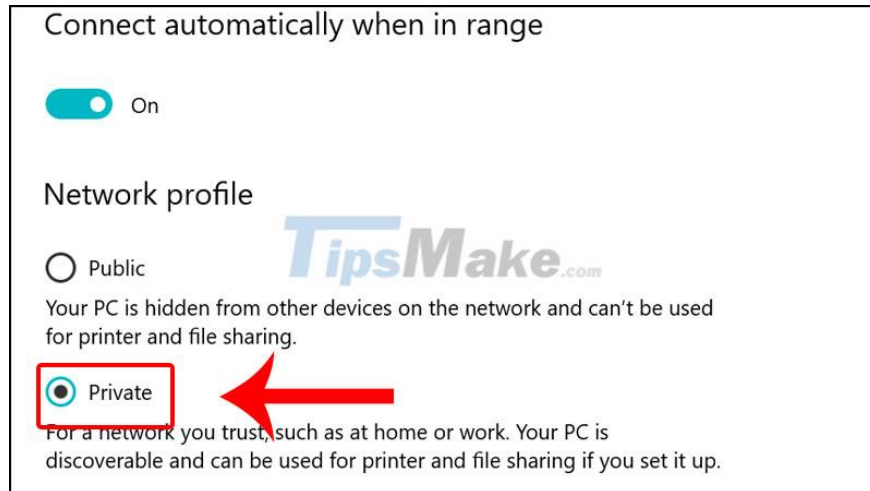
Step 1: Click the WiFi icon in the Taskbar.



Step 2: Select Properties in the WiFi you are connecting to.



Step 3: In the Network Profile section, select the Private item to switch the network from Public to Private.

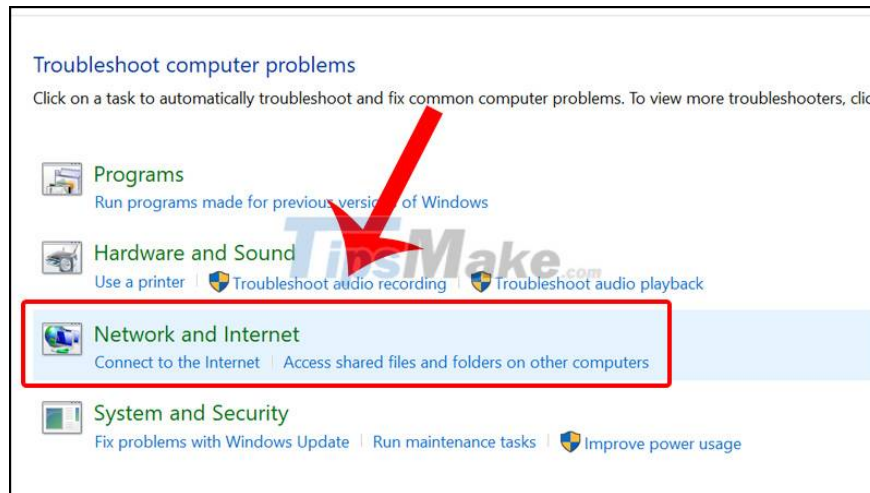


Using the Network Troubleshooter

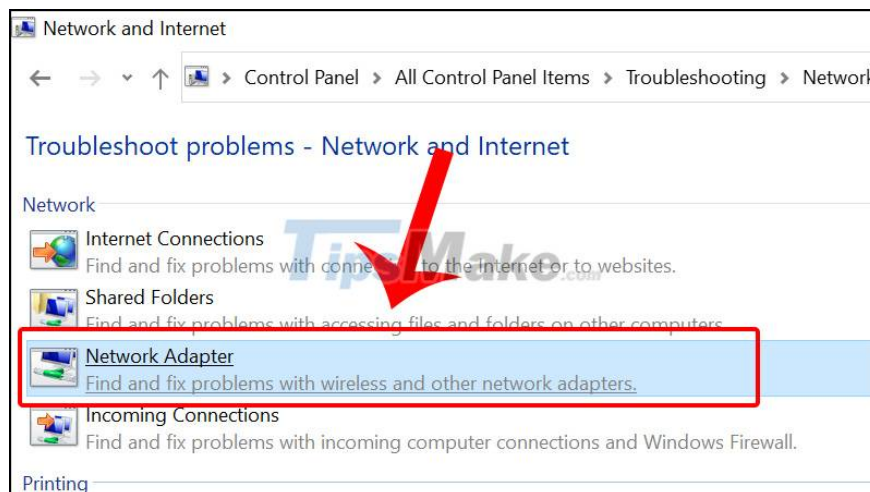
Step 1: Open Control Panel > Select Troubleshooting.



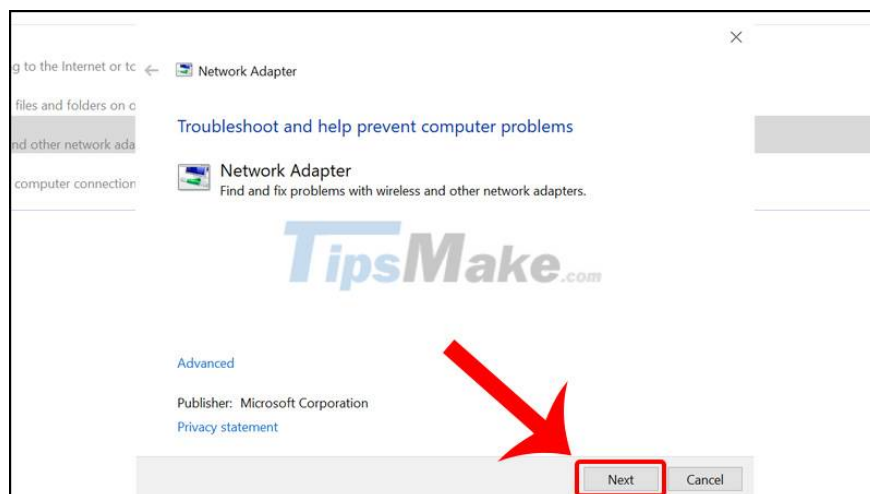
Step 2 Select the Network and Internet item.



Step 3: Click Network Adapter.



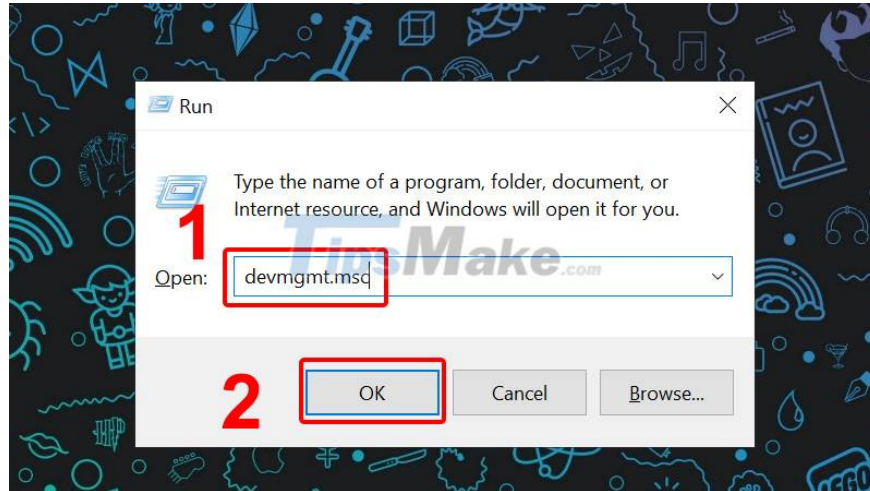
Step 4: Click Next and follow the system instructions given on the screen to fix the problem.



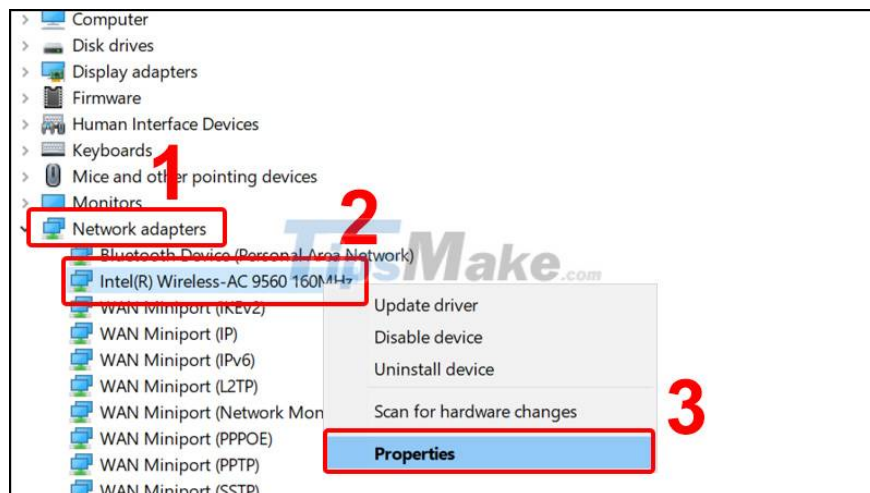
Disable IEEE 802.1X Authentication

Step 1: Press the Windows + R key combination to open the RUN dialog box.

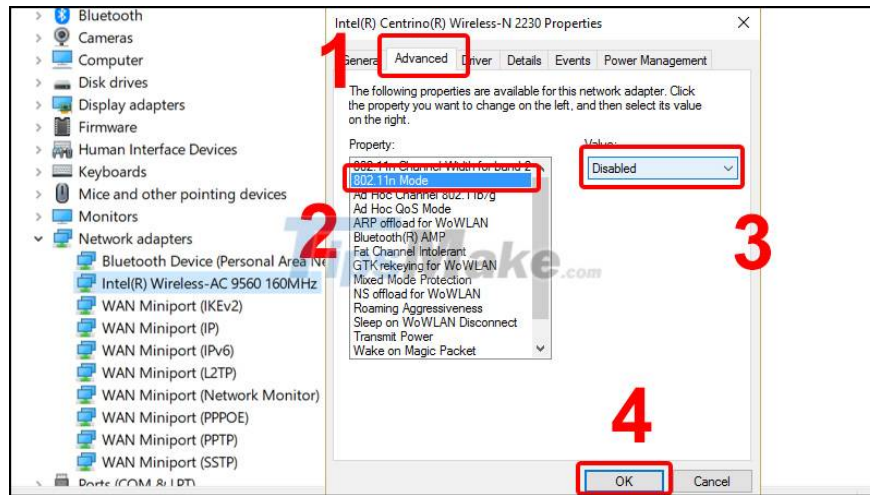
Step 2: Enter the command "devmgmt.msc" > Click OK.



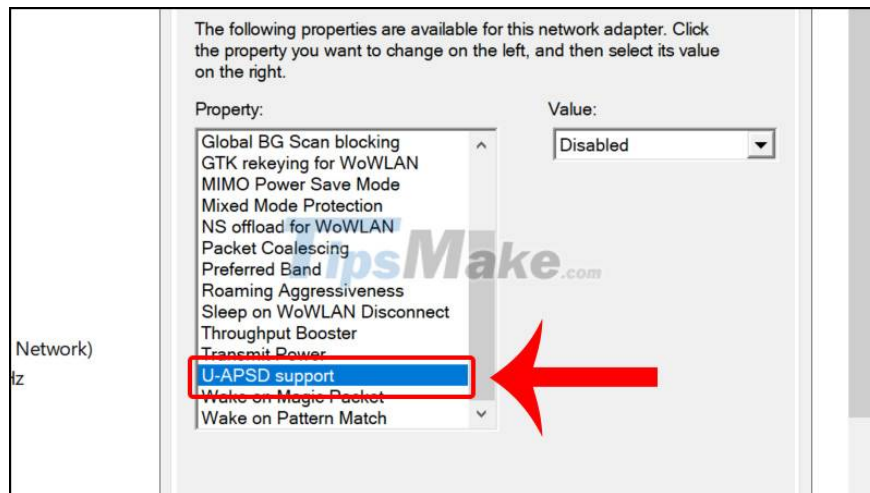
Step 3: Expand Network adapters > Click on the Adapter in use > Click Properties.



Step 4: On the Advanced tab, select 802.11n Mode > Select Disabled > Click OK to save.



Also you can disable the uAPSD (Unscheduled Automatic Power Save Delivery) feature if your wireless network card supports it.



Run Network Reset

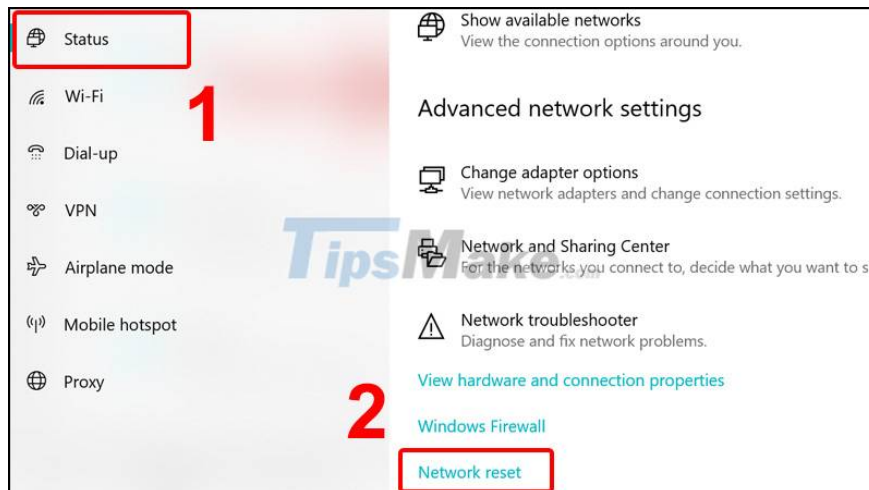
To reset settings related to Windows network settings and fix common Internet connection errors, follow these steps:

Step 1: Press Winows + I to access Windows Settings.

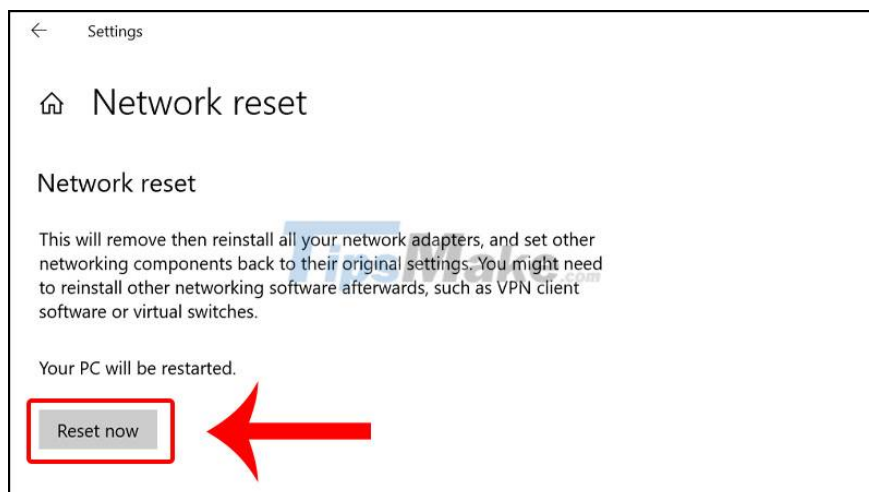
Step 2: Select Network & Internet?.



Step 3: In the Status tab > Select Network Reset.

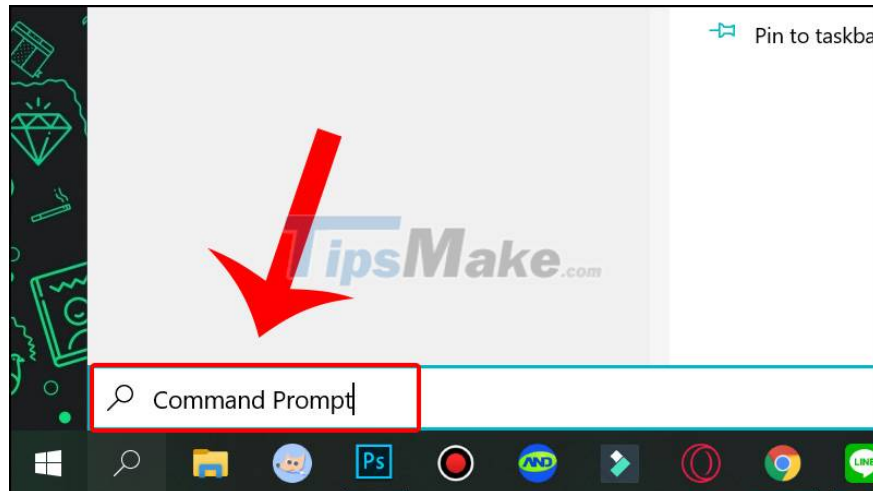


Step 4: Click Reset Now.

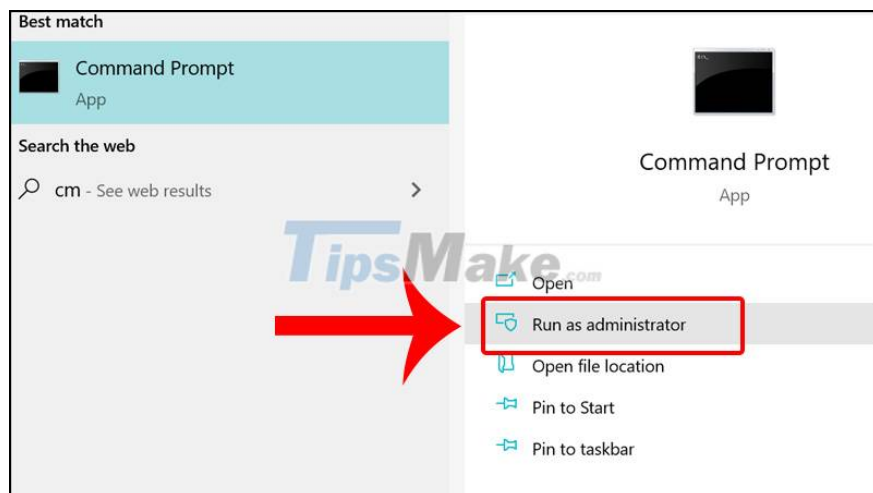


Reset TCP/IP Stack

Step 1: Enter Command Prompt in the search field.



Step 2: Open Command Prompt with Run as administrator.



Step 3: On the Command Prompt window, run the commands below:

1. NETSH INT IP RESET C:RESTLOG.TXT
2. NETSH INT TCP SET HEURISTICS DISABLED
3. NETSH INT TCP SET GLOBAL AUTOTUNINGLEVEL=DISABLED
4. NETSH INT TCP SET GLOBAL RSS=ENABLED

Step 4: Restart the computer to complete the process.

You finished reading the article "**Steps to fix WiFi error that keeps disconnecting on Windows 10,8,7**" edited by the [TipsMake](#) team. We hope this article has provided you with many useful tech tips and tricks. You can search for similar articles on tips and guides. Thank you for reading and for following us regularly.