

Steps to Fix the error that cannot be copied and pasted into the Remote Desktop session

Some users have particular problems when copying and pasting files from the local computer into a Remote Desktop session. They can still copy paste locally, but the option to paste will be grayed out on the Remote Desktop computer.

There are several ways to work around this depending on what you are copying and pasting.

Method 1: Logout your account and log back in

If you used to copy paste normally before, but suddenly you can't copy anymore, even without changing any settings, it is most likely due to a faulty login session.

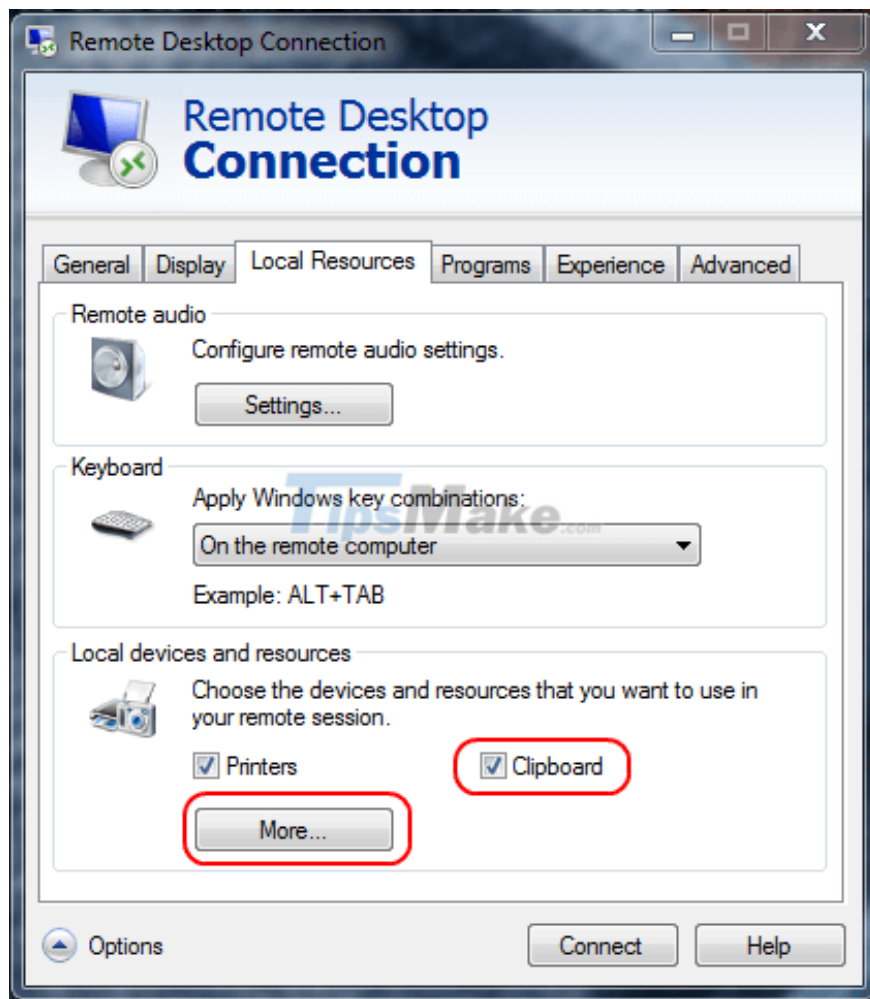
Try logging out of your account on the server and then logging back in. If not, continue with the steps below.

Method 2: Change client settings

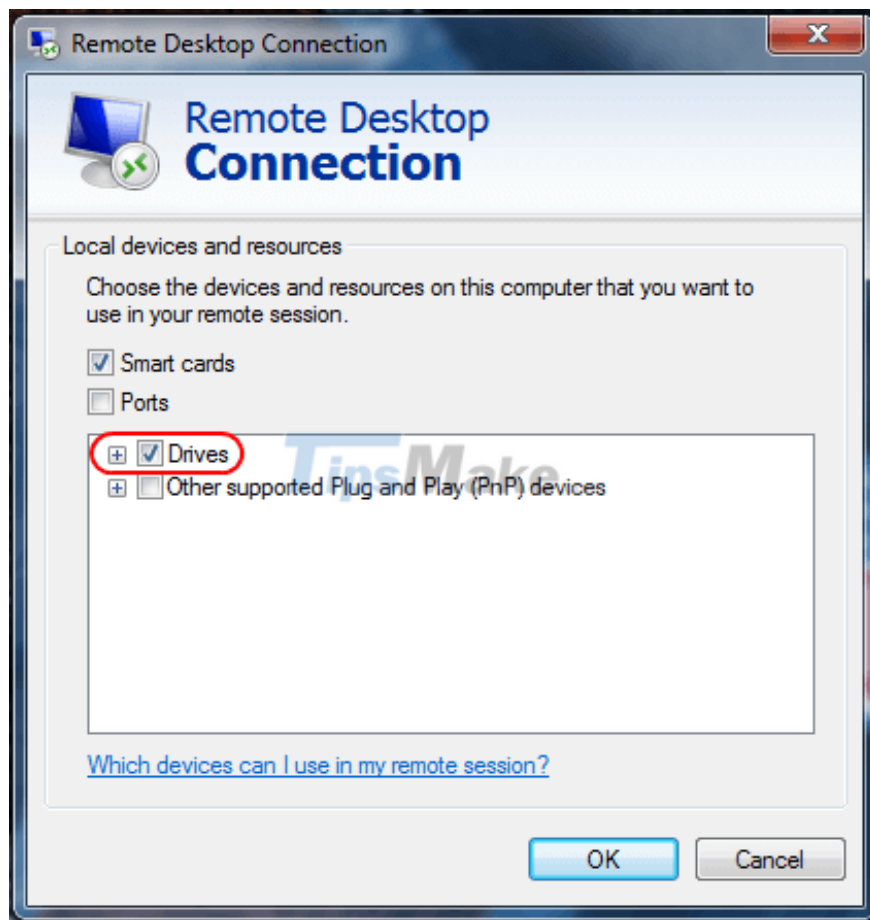
Step 1. Right click on the RDP icon that you use to connect, then select Edit.

Step 2. Select the Local Resources tab.

Step 3. Check the Clipboard option. To enable file copy-pasting, select More... and go to step 4. If you only need to copy-paste the text and not the file, stop here and click OK.



Step 4. Select the Drives option. Click OK 2 times.



Method 3: Change server settings

Windows Server 2016

In Windows Server 2016, these settings are controlled in Group Policy.

Step 1. Launch gpedit.msc.

Step 2. Navigate to Computer Configuration > Administrative Templates > Windows Components > Remote Desktop Services > Remote Desktop Session Host.

Step 3. Make sure Do not allow Clipboard redirection is set to Not Configured or Disabled.

Windows Server 2012

Step 1. Open Server Manager.

Step 2. Select Remote Desktop Services.

Step 3. Select Collections.

Step 4. Select Tasks > Edit Properties.

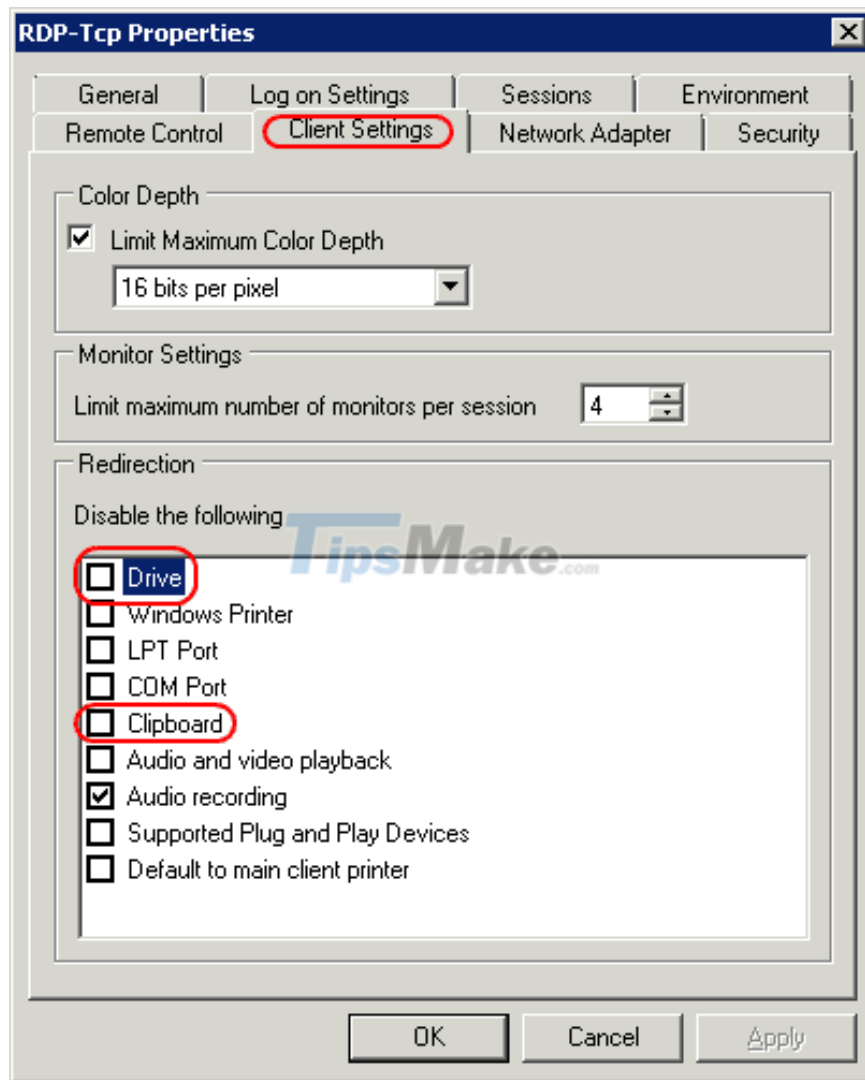
Step 5. In the Client Settings tab, make sure that Clipboard and Drive are enabled.

Windows Server 2008

Step 1. Launch Remote Desktop Session Host Configuration from the server.

Step 2. In Connections, right-click the connection and select Properties.

Step 3. Select the Client Settings tab and make sure the Clipboard box is unchecked. If you want to allow file copy and paste, make sure Drive is unchecked. Click OK when finished.



Also note that if you've configured all of these settings correctly and things still don't work, you may need to restart the server or simply end the rdpclip process.

The above is all you need to enable file copy and paste to Remote Desktop. Hope this guide helps you.

Hope you are successful.

You finished reading the article "**Steps to Fix the error that cannot be copied and pasted into the Remote Desktop session**" edited by the [TipsMake](#) team. We hope this article has provided you with many useful tech tips and tricks. You can search for similar articles on tips and guides. Thank you for reading and for following us regularly.

