

Steps to fix Start PXE over IPv4 error in Windows 11/10

You may see a 'Start PXE over IPv4' error when trying to start your computer because the system is trying to boot from PXE. The computer is trying to boot over the IPv4 network, and so you see this error message.

In today's article, **TipsMake** will show you how to fix Start PXE over IPv4 error in Windows 11/10 with the help of some simple solutions.

What is PXE?

PXE or Preboot Execution Environment is used to boot a computer with a client-server interface before deploying the PC image. Both DHCP (Dynamic Host Configuration Protocol) and TFTP (Trivial File Transfer Protocol), are used to perform PXE network boot. Normally, PXE is enabled on the computer, but you can disable it from the BIOS (discussed in the following section).

What does the Start PXE over IPv4 error mean?

You will see the error message 'Start PXE over IPv4 ?' when the computer tries to boot on the LAN. Your computer does this when it fails to boot from the boot drive. This usually happens due to wrong BIOS configuration.

How to fix Start PXE over IPv4 error

This error usually occurs because there are no other boot devices such as hard drives. So we'll set it as the default boot device. The article will also cover other solutions that can fix the error. These are the things you can do to fix the Start PXE over IPv4 error in Windows 11/10.

1. Disable Secure Boot and Legacy Support



Secure Boot and **Legacy Support** are two of the main culprits in changing the system boot order. Therefore, disabling them should fix the problem. You can follow the given steps to disable Secure Boot and Legacy Support.

Step 1: Boot into your computer's BIOS.

Step 2: Go to the **Security** tab with the arrow keys.

Step 3: Now, go to **Secure Boot** and disable it.

Step 4: Then select **Legacy Support** and disable it.

Step 5: Finally, save the settings and exit the BIOS.

When you restart your computer, you may see a message stating that the boot order has been changed and asking you to enter the number displayed.

If you don't see anything, just continue with the normal boot process. But if you see the message, here's what you need to do:

Step 1: Enter these numbers and press **Enter**.

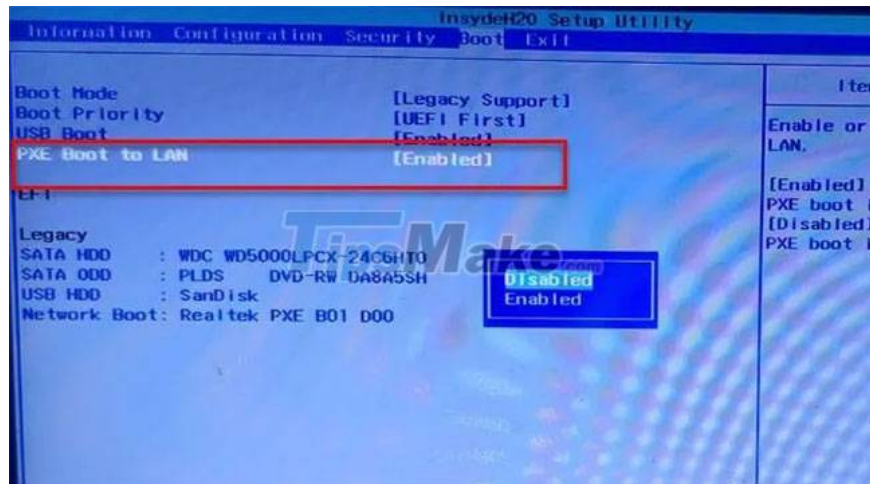
(**Note** : You will not be able to see the entered number).

Step 2: Now, turn off the computer from the power button.

Step 3: In the **BIOS** , go to the tab **Boot** , and select **Boot from Hard Drive** (some settings may differ depending on OEM).

Finally, restart the computer and check if the problem is fixed.

2. Disable Boot to LAN



Another thing you can do to fix the error is to disable Boot to LAN. Your system may have a different name, depending on the laptop brand. However, the process is often the same.

So follow the given steps to disable Boot to LAN option.

Step 1: Boot into BIOS.

Step 2: Go to the **Boot** tab .

Step 3: Turn off **PXE Boot to LAN** option .

Step 4: Save and exit.

Restart the computer and check if the problem is fixed.

Hope you are successful.

You finished reading the article "**Steps to fix Start PXE over IPv4 error in Windows 11/10**" edited by the [TipsMake](#) team. We hope this article has provided you with many useful tech tips and tricks. You can search for similar articles on tips and guides. Thank you for reading and for following us regularly.