

Steps to fix slow Windows File Explorer

If you have to manage and work with files on a daily basis, File Explorer performance issues can significantly hinder your productivity. Fortunately, there are different ways to fix slow or unresponsive File Explorer.

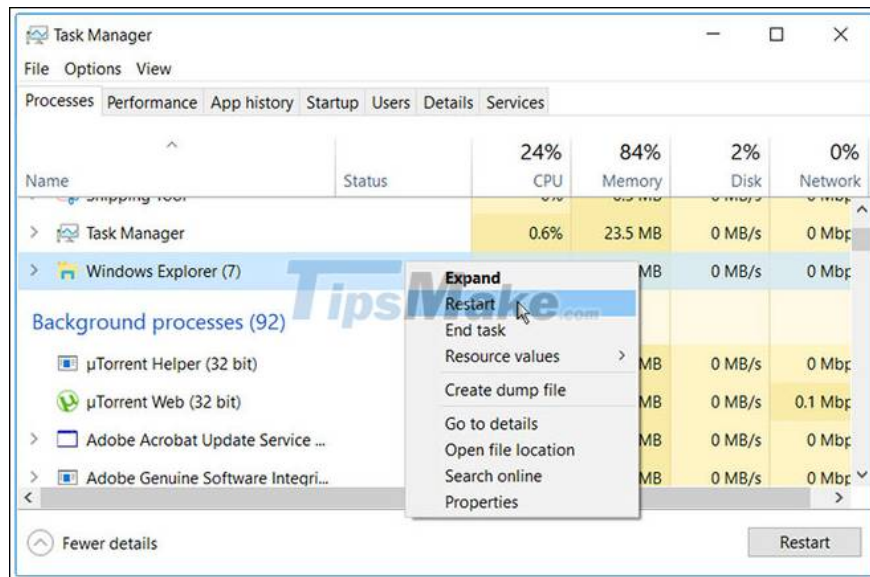
Windows File Explorer is a great tool, but it also has its limitations. The program often responds slowly when you open or copy files. Sometimes, File Explorer's search bar takes too long to load search results or doesn't provide search results at all.

1. Restart File Explorer

Restarting File Explorer can help with this problem - especially when you have multiple File Explorer windows open.

Step 1: To get started, right-click on the taskbar and select **Task Manager** from the options.

Step 2: Right-click on **Windows Explorer** and select **Restart**.



If the problem persists, try closing File Explorer with Task Manager and then reopening it manually.

To do this, open the Task Manager following the previous steps. From there, right-click on **Windows Explorer** and select **End task**. Finally, open File Explorer and check if the problem is resolved.

2. Minimize running programs

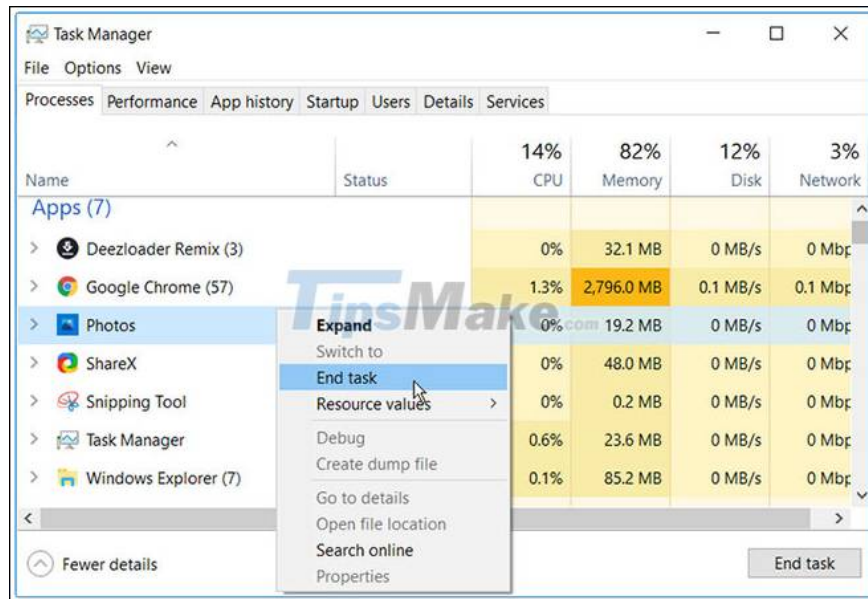
Running too many PC programs at once can affect the speed of File Explorer. In fact, this can slow down your entire PC.

To work around this, try minimizing the number of programs running on your PC.

Step 1: To get started, open Task Manager by pressing **Ctrl + Shift + Esc** .

Step 2: Navigate to the **Processes** tab .

Step 3: In the **Apps** section , right-click on a specific program and select **End task** . Repeat this for all the programs you want to close.



Next, scroll down to the **Background processes** section and close some tasks using the previous steps.

3. Turn off Quick Access and clear File Explorer history

Quick Access is one of the best features of File Explorer. When you open File Explorer, your recently accessed files and folders appear in Quick Access preferences. This helps you access your files and folders quickly, but it can also slow down File Explorer.

To speed up File Explorer, you might consider disabling Quick Access.

Step 1: Open File Explorer and click on the **File** option in the upper left corner of the screen.

Step 2: Select **Change folder and search options** .

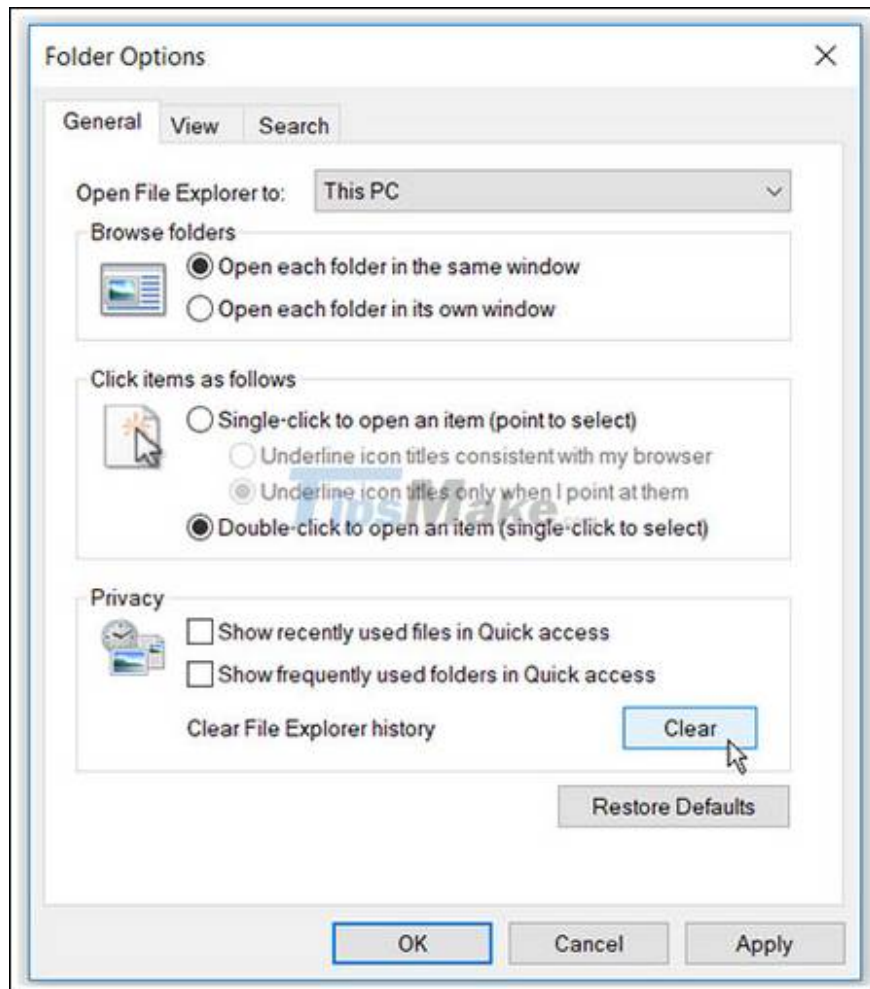
Step 3: In the next window, navigate to the **General** tab .

Step 4: Click the **Open File Explorer** drop-down menu to select **This PC** .

Step 5: Next, uncheck the **Show recently used files in Quick access** and **Show frequently used folders in Quick access options** .

Step 6: Now, press the **Clear** button next to **Clear File Explorer History** .

Step 7: Click **Apply** > **OK** to apply these changes.



Restart the PC to apply these changes.

4. Configure Folder Optimization Settings

Are you having this problem with just one folder with many files and subfolders inside it? If that's the case, optimizing that directory can be helpful.

Here's how you can optimize your folders to help speed up File Explorer:

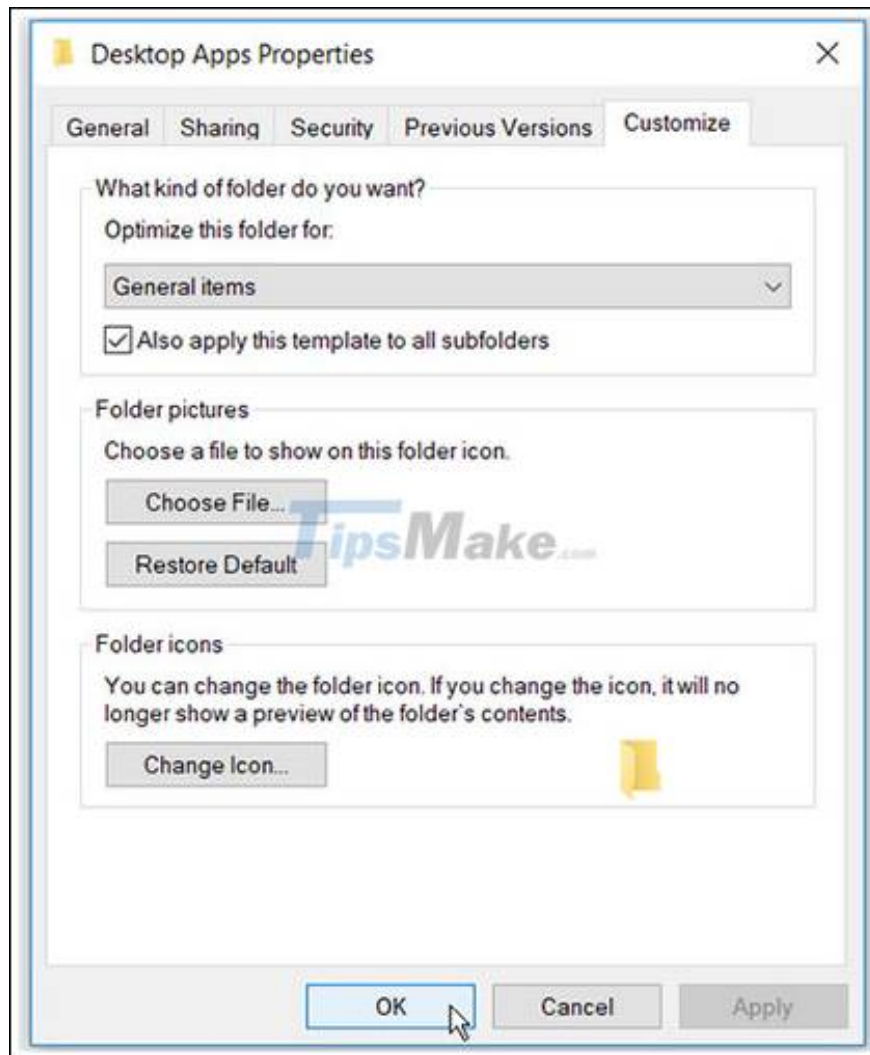
Step 1: Right-click on the problematic folder and select **Properties**.

Step 2: Navigate to the **Customize** tab .

Step 3: Click the **Optimize this folder for** drop-down menu and select **General items**.

Step 4: Check the box **Also apply this template to all subfolders** .

Step 5: Click **Apply** > **OK** to apply these changes.



5. Troubleshooting with Windows search and indexing service

Windows search and indexing service is a great tool. It helps improve your PC's search performance. However, File Explorer and its search bar can be slow if service search and indexing is problematic.

Troubleshooting Windows search and indexing service that can help speed up File Explorer.

Here's how you can fix the problem:

Step 1: Type **Control Panel** into the Windows search bar and select the best match.

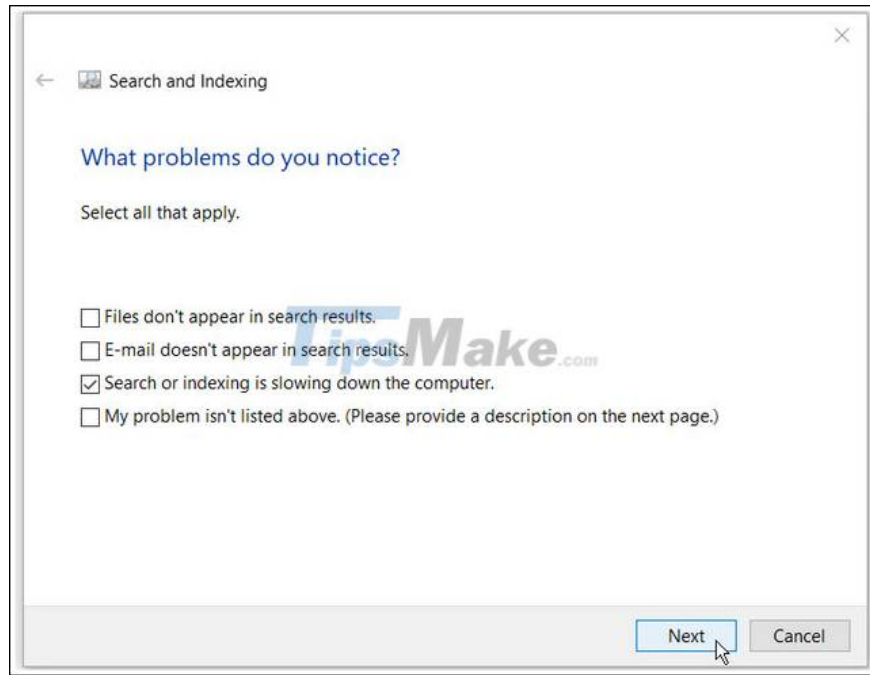
Step 2: In the **View by** drop-down menu, select **Small icons**.

Step 3: From there, select **Indexing Options**.

Step 4: In the next window, select **Troubleshoot search and indexing**.

Step 5: Check the box **Search or indexing is slowing down the computer**.

Step 6: Click **Next** to complete the process.



Good luck with your troubleshooting!

You finished reading the article "**Steps to fix slow Windows File Explorer**" edited by the [TipsMake](#) team. We hope this article has provided you with many useful tech tips and tricks. You can search for similar articles on tips and guides. Thank you for reading and for following us regularly.