

Steps to fix Runtime errors in Windows 11

Windows 11 is a relatively new operating system. Therefore, it is prone to many errors, one of which is Windows Runtime Error.

The error itself can be caused by reasons ranging from outdated drivers to incorrectly installed applications. Although there are many error codes involved, most of them can be resolved by similar methods.

Update Microsoft Visual C++ Redistributable Package

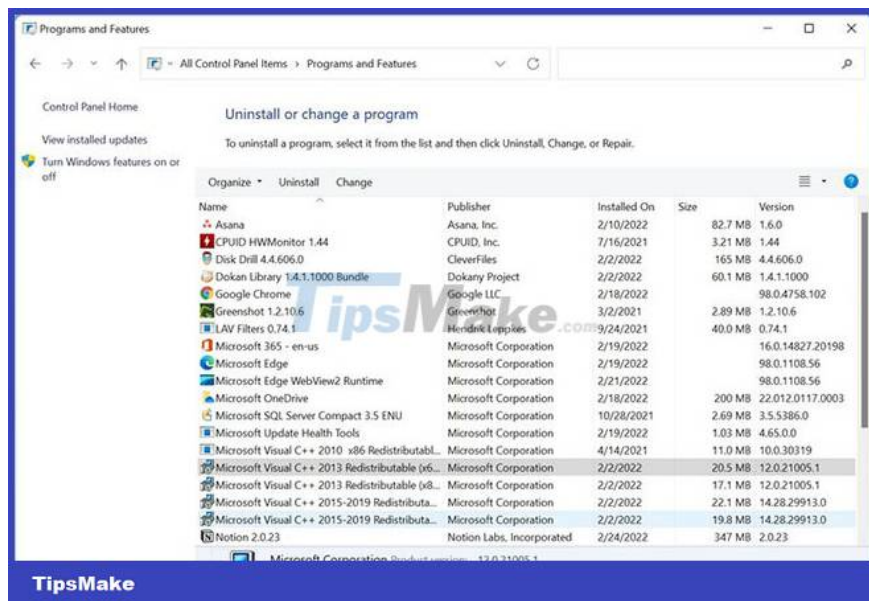
The first fix you should try when you get a Runtime error is to make sure you have the latest version of Microsoft Visual C++ Redistributable. You can install the latest version of a package manually by first uninstalling the current version on your computer and then downloading the latest update.

Here's how to do it:

Step 1. In the Start menu search bar, type "Control Panel".

Step 2. Open Control Panel from the search results and look for an option called Programs and Features.

Step 3. In the Programs and Features window, select the Microsoft Visual C++ Redistributable package and click Uninstall. You will have to do this for each package.



Step 4. In the uninstall wizard window, click Uninstall.

Step 5. After you have uninstalled all packages, download Microsoft Visual C++ Redistributable.

Step 6. Once the download is complete, open the downloaded file, then click Install. You will need to accept the license agreement and have the appropriate admin privileges to install the program.

Step 7. Restart the computer.

This method will fix the Runtime error if the error is caused by an outdated version of Microsoft Visual C++ Redistributable. Run the affected program to confirm this. If the error persists, move on to the solutions listed below.

Troubleshoot Runtime Errors Using Clean Boot

Sometimes, third-party programs or services can conflict with each other, leading to Runtime errors. To rule this out, you can 'clean boot' your computer having disabled all other third-party services, except the service affected by the Runtime error. While this sounds similar to Safe Mode, there are quite a few differences between Clean Boot and Windows' Safe Mode.

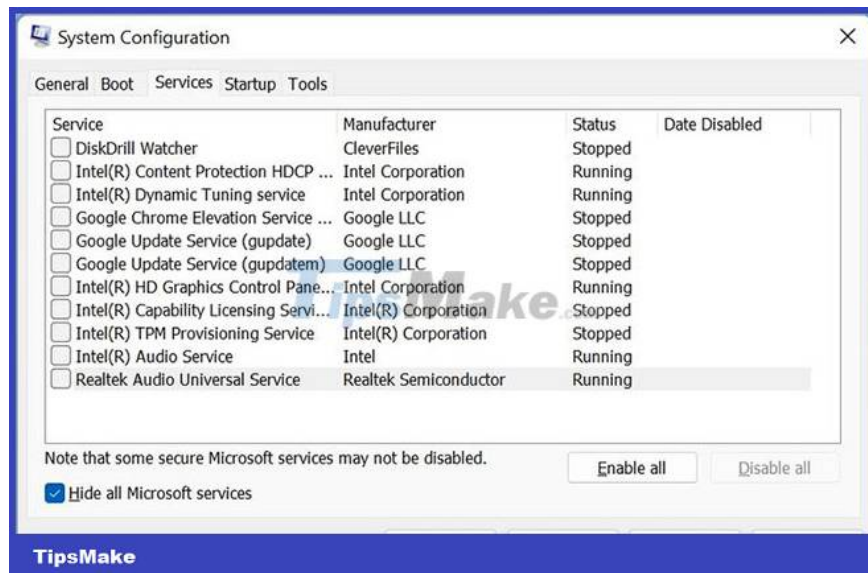
To start the computer, do the following:

Step 1. Press Windows key + R to open Run application.

Step 2. Type msconfig in the text box, then press Enter.

Step 3. In the System Configuration window, click the Services tab.

Step 4. Check the Hide all Microsoft Services box.



Step 5. Click Disable all.

Step 6. Now, in the Services list, find the affected application and enable it. If your app is not mentioned in the list, just move on to the next step.

Step 7. Click Apply and close the System Configuration window.

Step 8. Open Task Manager with the keyboard shortcut CTRL + Shift + ESC.

Step 9. Click the Startup tab,

Step 10. Disable each service by selecting it, then click Disable. You will have to do it with each service one by one.

Step 11. Close Task Manager, then restart the computer.

Step 12. Launch the affected application.

If the application executes successfully, then the Runtime error is probably caused by some other third-party program on the computer. To find out which programs, enable them one by one in the System Configuration window and see which program is causing the error.

Update Windows to the latest version

Microsoft regularly rolls out updates to Windows 11. Most of them are quite useful and provide much-needed fixes to the system. Therefore, update your Windows 11 operating system to the latest version.

Although Windows does this automatically, sometimes updates can be paused due to Internet connection or other settings.

Sometimes Windows updates also come with the latest version of Microsoft Visual C++ Redistributable. Therefore, you should update Windows to keep your C++ redistributable to current standards.

Update display driver

Sometimes, outdated display drivers cause a bunch of errors in Windows. One of these errors is a Runtime error. Updated drivers prevent such errors, while also correcting previous errors. Therefore, finding and replacing outdated Windows drivers is a must.

Normally, Windows automatically updates the driver, but you may have to update the display driver manually if you use a dedicated graphics card.

Hopefully updating the display driver will fix the Runtime error. In some cases, you may have to visit your GPU manufacturer's website and download the latest driver from there.

Use System Restore to go back to the previous state

The last resort is to use System Restore to restore your computer to a previous state, when you didn't get a Runtime error.

Be sure to back up any data you've created since then, before proceeding. This process may take some time.

Using the methods listed above, the Windows Runtime errors you are facing should be resolved. It is important that you follow the steps carefully as they involve interfering with your operating system.

In addition, many users also reported facing slow Windows 11 startup. Luckily, that too can be easily remedied.

You finished reading the article "**Steps to fix Runtime errors in Windows 11**" edited by the [TipsMake](#) team. We hope this article has provided you with many useful tech tips and tricks. You can search for similar articles on tips and guides. Thank you for reading and for following us regularly.
