

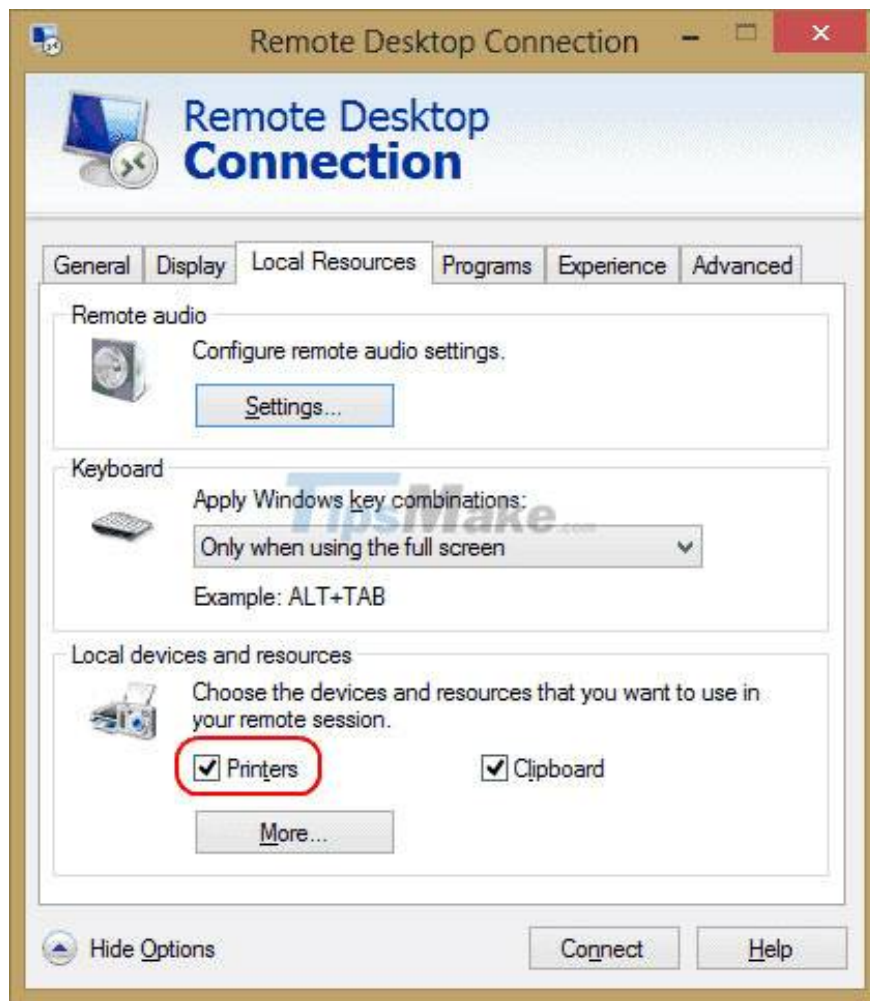
Steps to fix printer not showing up in Windows Remote Desktop session

Have you installed a printer on your Microsoft Windows computer, but the printer is not showing up during the Remote Desktop session?

Have you installed a printer on your Microsoft Windows computer, but the printer is not showing up during the Remote Desktop session? There are a few things you need to check when experiencing this problem.

1. Check if the printer is turned on when connected

Make sure you have the Printers option selected in the Remote Desktop settings. You can check this by bringing up the Remote Desktop Connection screen, selecting Local Resources, and making sure the Printers option is selected.



2. Check server settings

If you are connecting to a Windows Server box, make sure the settings on the server do not disable printer sharing. Log in to the server and perform these steps.

Windows Server 2016 & 2019

In these versions of Windows Server, RDP settings are controlled in Group Policy.

Step 1: Launch gpedit.msc.

Step 2: Navigate to Computer Configuration > Administrative Templates > Windows Components > Remote Desktop Services > Remote Desktop Session Host.

Step 3: Expand Printer Redirection.

Step 4: Make sure that the Do not allow client printer redirection setting is set to Not configured or Disabled. Another setting you might want to check is Redirect only the default client printer. This policy should also be set to Not configured or Disabled, if you want more than just the default printer available for use.

Windows Server 2012

Step 1: Open Server Manager.

Step 2: Select Remote Desktop Services.

Step 3: Select Collections.

Step 4: Select Tasks, then select Edit Properties.

Step 5: In the Client Settings tab, make sure that Windows Printer is enabled.

Windows Server 2008

Step 1: Go to Start > Administrative Tools > Remote Desktop Services > Remote Desktop Session Host Configuration.

Step 2: Select Connections, right-click on the name of the connection, select Properties > Client Settings > Redirection. Make sure that Windows Printer is not selected.

3. Make sure the drivers are installed on the server

Check that the driver for the printer you want to use is installed on the computer you are connecting to. If the driver is not installed on the computer you are connecting to, the printer will not appear at all.

Above are some causes and solutions to fix the error that the printer does not appear in the Remote Desktop session. Hope this information is useful to you!

You finished reading the article "**Steps to fix printer not showing up in Windows Remote Desktop session**" edited by the [TipsMake](#) team. We hope this article has provided you with many useful tech tips and tricks. You can search for similar articles on tips and guides. Thank you for reading and for following us regularly.