

Steps to fix Network Discovery not working in Windows 10

The Network Discovery feature allows you to discover other devices connected to the same network, as long as they also have the feature turned on. Usually, it is used to share files or other devices such as printers.

Although Network Discovery saves you from having to attach files to emails or search for old USBs, it still sometimes misbehaves without any warning.

If Network Discovery is not working in Windows 10, follow the tips TipsMake suggested below to get it working again.

1. Restart the computer

Whenever you are trying to fix a problem on a Windows computer, restarting should always be the first step. There are certain benefits from rebooting, such as clearing cache, preventing memory leaks, or fixing software bugs.

Restarting can also help with network-related problems so make sure to restart the computer quickly and see if that fixes the problem. However, if this doesn't work or the problem keeps coming back, it could be a sign of a more serious problem.

2. Run Windows Troubleshooter

If restarting your computer doesn't fix the problem, you can try using Windows 10's built-in troubleshooter. Here's how you can do it:

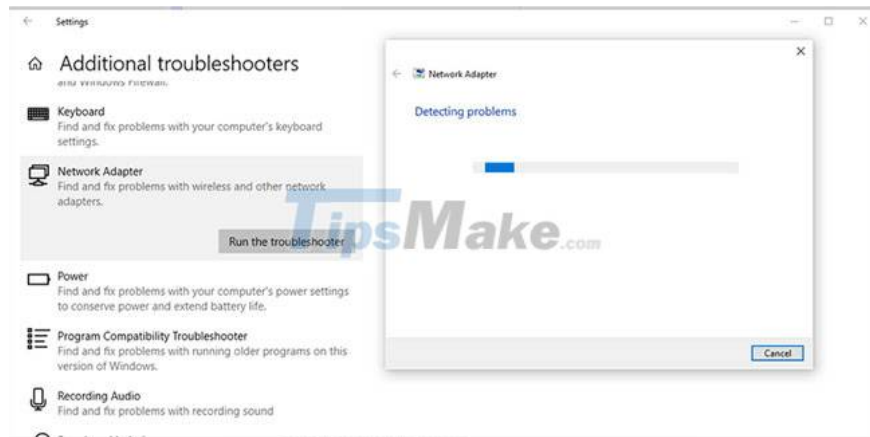
Step 1: Click **Start** , then go to **Settings > Update & Security** . You can access the Settings menu via the gear icon to the left of the Start menu.

Step 2: From the menu on the left, select **Troubleshoot**.

Step 3: Click **Additional troubleshooters**.

Step 4: From the **Find and fix other problems section** , select **Network adapter**.

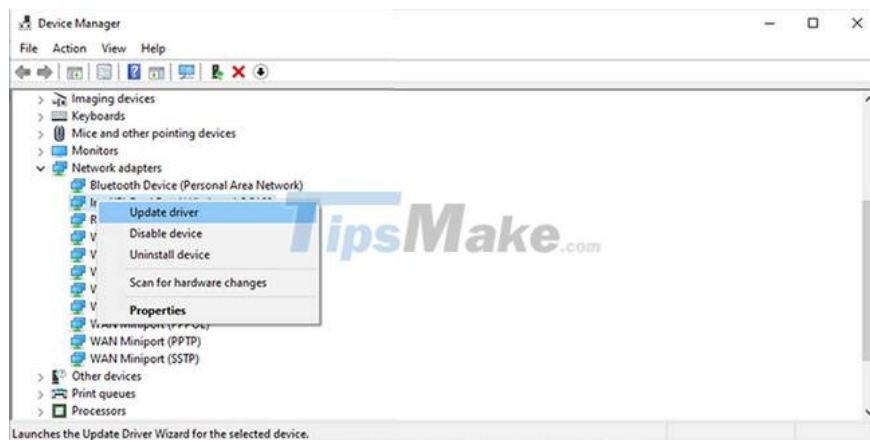
Step 5: Click **Run the troubleshooter** and follow the instructions shown to fix the problem.



To fix this issue, you should also run the **Shared Folders** troubleshooter . Follow steps 1 to 3 again and in step 4, select **Shared Folders**.

3. Update Network Adapter driver

Network problems can be caused by outdated or damaged network adapters. Although drivers usually update automatically, you can follow the steps in the following article to ensure that your system is not running an old version: 5 basic ways to update and update drivers for your computer.



4. Check network profile

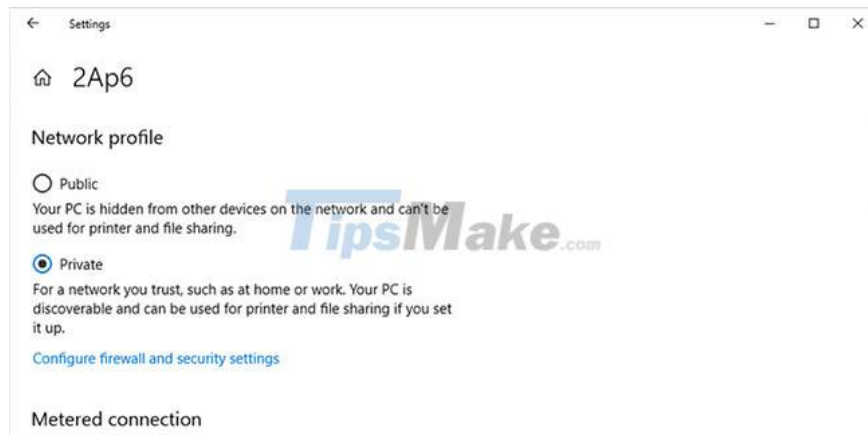
Windows 10 has two network profiles that you can choose from: **Private** and **Public**. If you've set your profile to **Public** , other devices won't be able to discover your computer or share files with them. Setting the profile to **Public** is a good idea when you're connecting to a network at coffee shops or airports to not leave your data vulnerable.

On the **Private** profile , Windows 10 allows the computer to share files. Basically, Windows 10 thinks it can trust private networks like the home or work network. Follow these steps to ensure that your network profile is set to **Private** :

Step 1: Click **Start > Settings** . Alternatively, you can use the keyboard shortcut **Win + I** .

Step 2: Select **Network & Internet > Status** .

Step 3: Open the **Properties** menu and from the **Network Profile** , select **Private**.



5. Check sharing options

If you've set your profile to Private and are still having issues with the Network Discovery feature, you should look into sharing options. Here's how you can do it:

Step 1: Click **Start > Settings > Network & Internet** .

Step 2: From **Advanced network settings** , select **Network and Sharing Center > Change advanced sharing settings** .

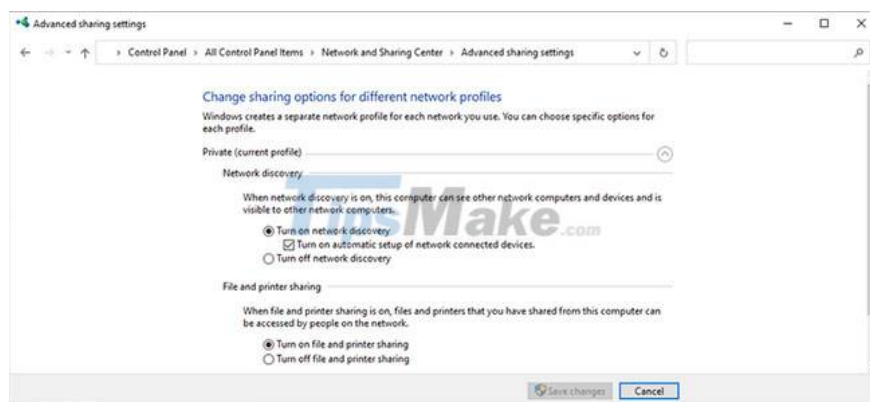
Step 3: Expand the **Private (current profile)** menu .

Step 4: From **Network discovery** , select the option **Turn on network discovery** and **Turn on automatic setup of network connected devices** .

Step 5: From **File and printer sharing** , select the option **Turn on file and printer sharing** .

Step 6: Click **Save changes** and check if the problem is now resolved.

In the **Advanced sharing settings** window , you should expand the **Guest or Public** menu and select **Turn off network discovery** from the **Network discovery** section . Also, under **File and printer sharing** , select **Turn off file and printer sharing** . This way, your computer won't be hacked when you're connected to a public network.



6. How to enable Network Discovery with Command Prompt

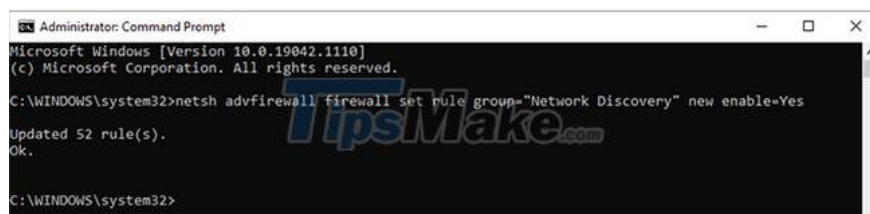
If you don't want to navigate through the Settings menu to enable the Network Discovery feature, you can use the command line. Follow these steps to enable the Network Discovery feature using Command Prompt:

Step 1: In the **Start** menu search bar , search for **command prompt** and select **Run as administrator** to open CMD with admin rights.

Step 2: Enter the following command:

```
netsh advfirewall firewall set rule group='Network Discovery' new enable=Yes
```

Step 3: Press the **Enter** button . This will enable the Network Discovery feature.

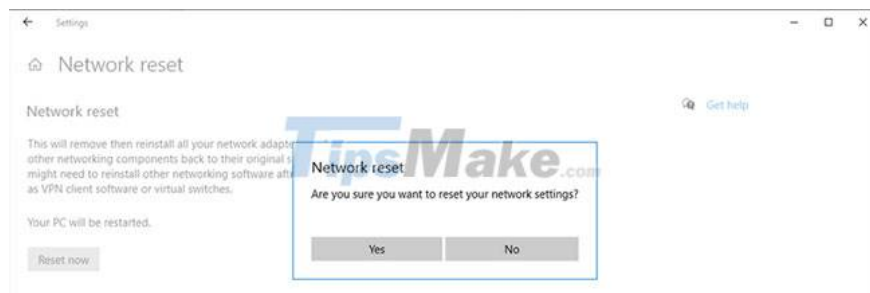


To disable this feature, type the following command and press **Enter** :

```
netsh advfirewall firewall set rule group='Network Discovery' new enable=No
```

7. Use the network reset feature

If everything seems fine with the network settings, you can try resetting this setting to fix the Network Discovery issue. Reference: [This is how to reset network settings on Windows 10 with just 1 click for detailed instructions.](#)



If you are using VPN client software or any virtual switches, you will have to reinstall them after resetting the network.

8. Check the Services settings

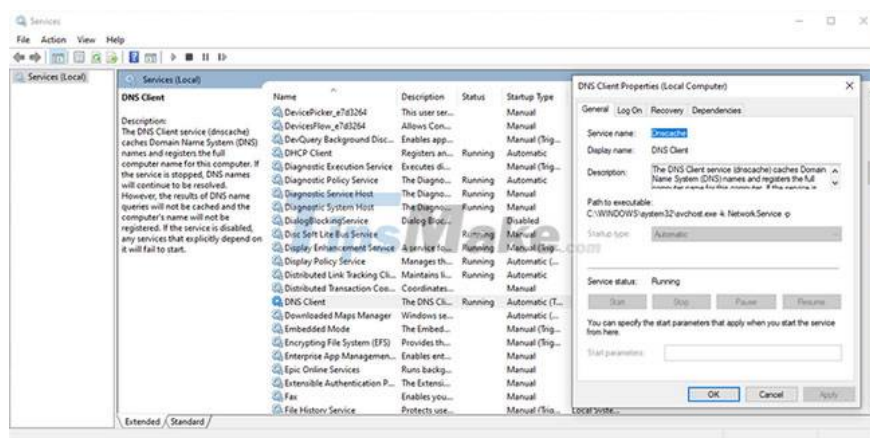
In Windows 10, Services contain programs that run in the background that take care of system functions, such as remote access, printing, networking, etc. Normally, the system has no problem checking control background services. However, sometimes you need to step in and fix a feature or when the app stops working. Follow these steps to change the Services settings and get the Network Discovery feature working again:

Step 1: In the **Start** menu search bar , search for **services** and select **Run as administrator** .

Step 2: Locate **DNS Client** and open it.

Step 3: Select the **General** tab and check if the status is **Running** or not. If not, click **Start**.

Step 4: Check if the **Startup type** is set to **Automatic** .



Repeat the same steps for **Function Discovery Resource Publication**, **Function Discovery Provider Host**, **UPnP Device Host** and **SSDP Discovery** .

9. Check Windows Firewall settings

The Network Discovery feature may have stopped working because Windows Firewall is blocking it. Follow these steps to check Windows Firewall settings:

Step 1: Open Control Panel.

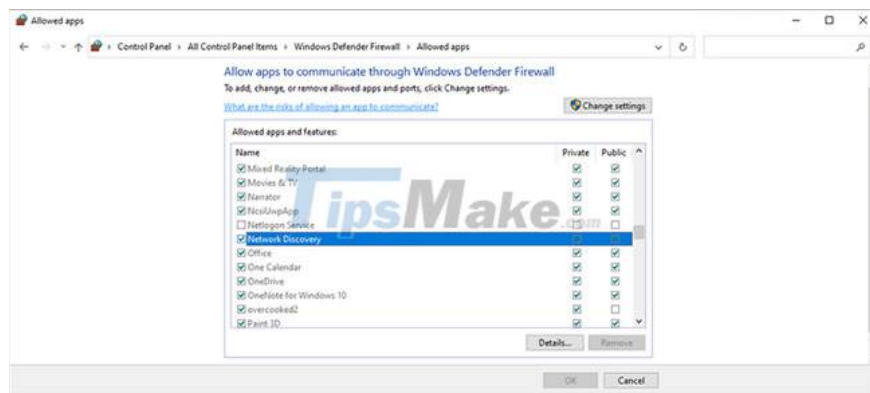
Step 2: From the **View by** menu , select **Large icons** and **Small icons**.

Step 3: Click **Windows Defender Firewall** .

Step 4: Select **Allow an app or feature through Windows Defender Firewall** .

Step 5: In the **Allowed apps** window , click the **Change Settings** button . Then scroll down to **Network Discovery** and select **Private**.

Step 6: Click **OK** to save the changes.



Good luck with your troubleshooting!

You finished reading the article "**Steps to fix Network Discovery not working in Windows 10**" edited by the [TipsMake](#) team. We hope this article has provided you with many useful tech tips and tricks. You can search for similar articles on tips and guides. Thank you for reading and for following us regularly.