

Steps to fix double quotes in Word

The double quote error in Word is not a frequent error such as some errors such as font errors in Word, word loss errors when typing in Word, but it will also affect how we edit content in Word, as well like having to do more debugging.

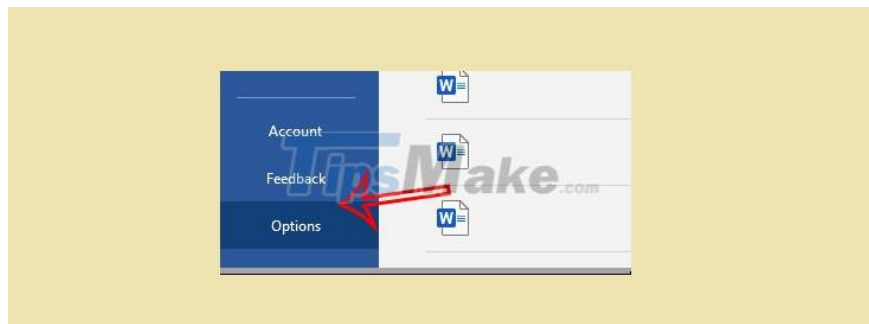
Usually, when the double quotation mark error in this Word displays the status of the mark, it will display in the opposite direction, or adjust itself to an apostrophe. If Word is experiencing this double quote error, you can refer to a very simple fix in the article below.

The correction of double quotes in Word below applies to all versions from 2007 to Word 2009.

Instructions to fix double quotes in Word

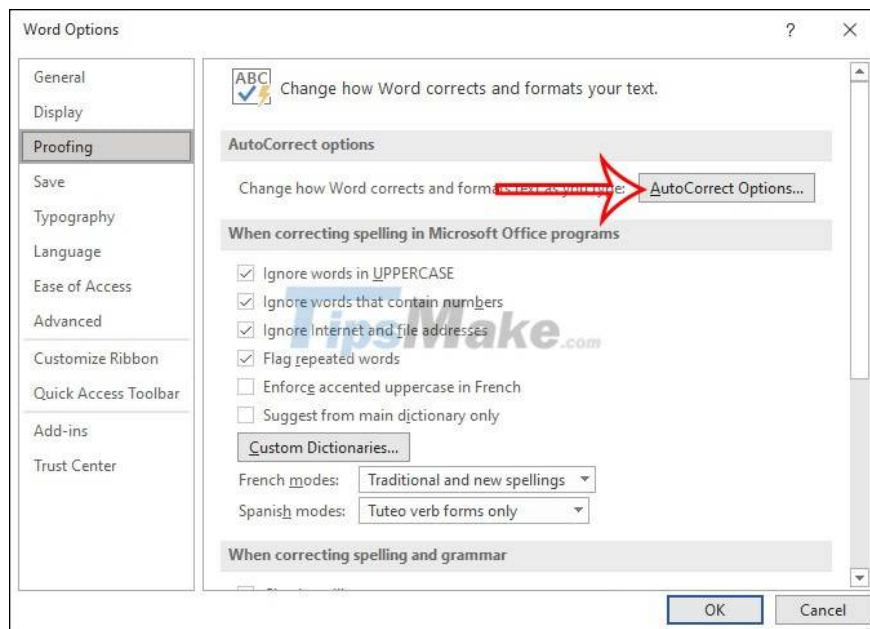
Step 1:

At the interface in Word, first click on **the File item and then select Options** , or click on the Office icon and then click on Word Options with Word 2007 and below.



Step 2:

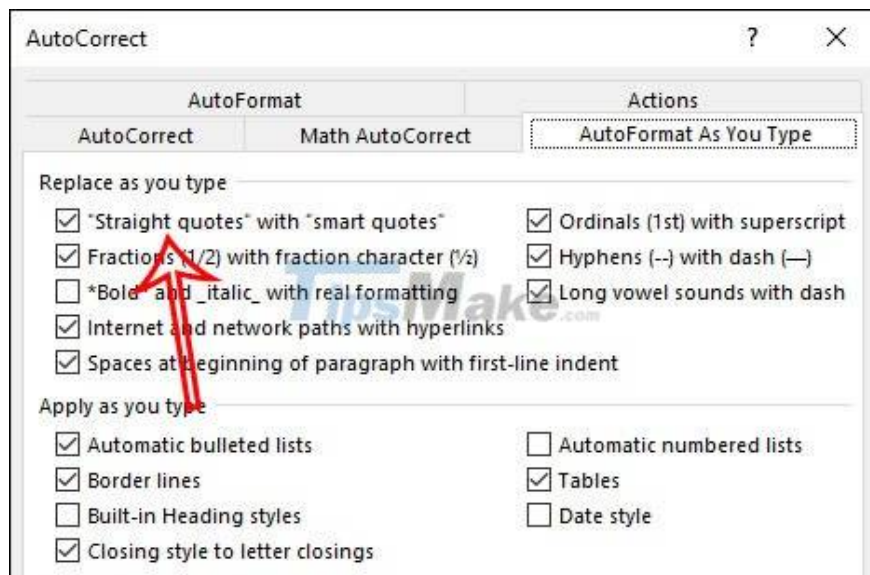
Switch to the setup interface for Word, click on **the Proofing item** in the list on the left of the interface. Next, look at the content section next to us and click on the **AutoCorrect Options option...**



Step 3:

Switching to the new interface we will click on the **AutoFormat As You Type** tab . Next, looking down at the content below you will see the **'Straight quotes' with 'smart quotes' setting to click** .

After you have finished setting, click OK to change. So when you enter double quotes in Word, there will be no more errors.



You finished reading the article "**Steps to fix double quotes in Word**" edited by the [TipsMake](#) team. We hope this article has provided you with many useful tech tips and tricks. You can search for similar articles on tips and guides. Thank you for reading and for following us regularly.