

Steps to fix Bluetooth error not in Device Manager

The fact that Bluetooth cannot connect to the computer causes many obstacles for users. If you don't know how to fix Bluetooth error not in Device Manager, click to see now!

Cannot connect Bluetooth to computer or Bluetooth is not in Device Manager are common questions that computer users do not know how to solve? Follow along with this article to find out how to fix Bluetooth error not in Device Manager in a simple way!

1. Why is Bluetooth not found in Device Manager

The fact that the computer does not find Bluetooth in Device Manager or Control Panel that makes users unable to connect Bluetooth to the computer can be caused by many different reasons:

1. The missing or damaged Bluetooth driver may even be outdated or outdated.
2. The Bluetooth Support service is disabled and has not been started.
3. The Bluetooth Support service does not have to configure settings or use an admin account on the computer.
4. The rare cause is that the Bluetooth adapter is damaged and Windows cannot recognize it.

2. How to fix Bluetooth not found error in Device Manager

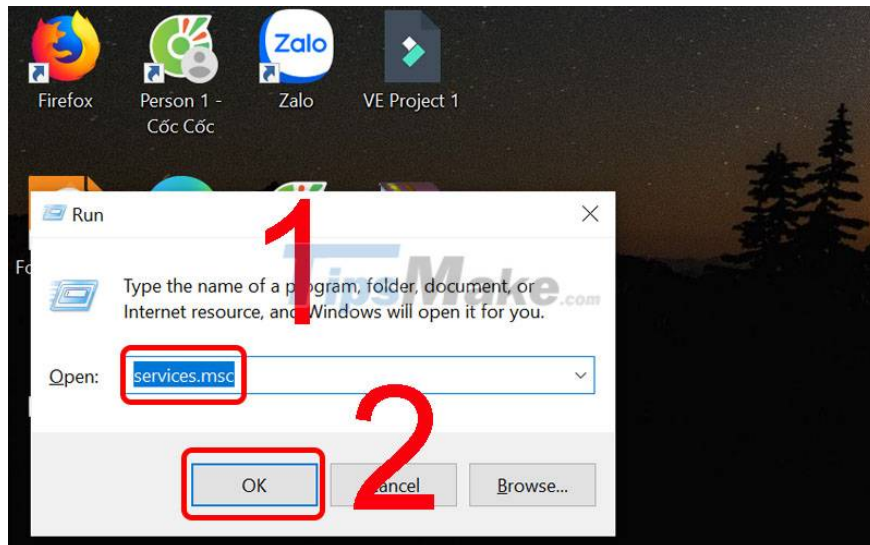
To fix the Bluetooth not found error in Device Manager, you can do a few ways as follows:

Turn on the Bluetooth Support service

Step 1: Press the Windows + R key combination on the keyboard to open the Run dialog box.



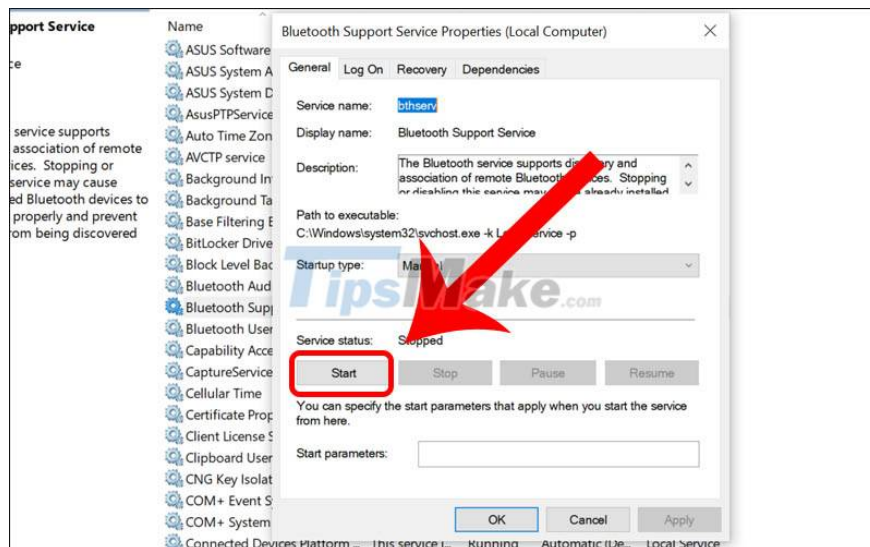
Step 2: Type services.msc > Click OK.



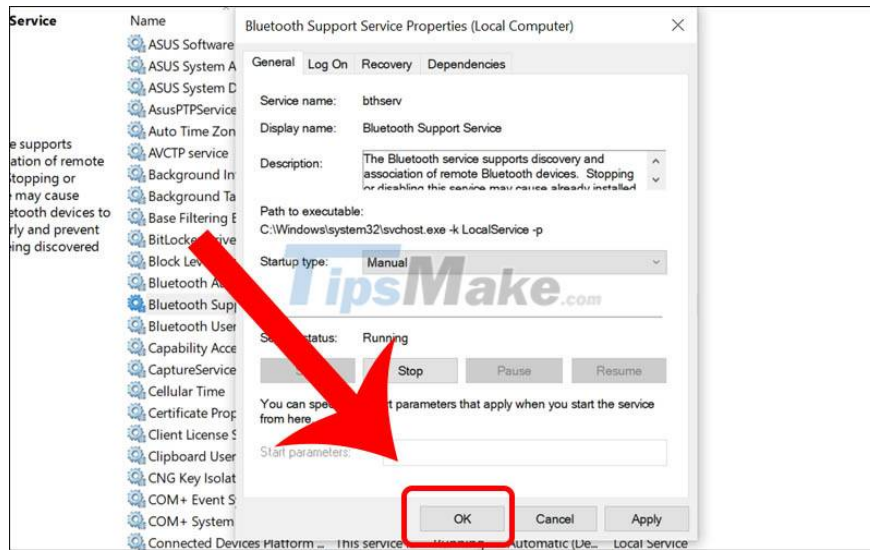
Step 3: Double click on Bluetooth Support Service.

AsusPTPSERVICE		Running	Automatic	Local System
Auto Time Zone Updater	Automaticall...		Manual (Trigg...	Local Service
AVCTP service	This is Audio...	Running	Manual (Trigg...	Local Service
Background Intelligent Tran...	Transfers file...		Manual	Local System
Background Tasks Infrastruc...	Windows inf...	Running	Automatic	Local System
Base Filtering Engine	The Base Fil...	Running	Automatic	Local Service
BitLocker Drive Encryption S...	BDE/VC hos...	Running	Manual (Trigg...	Local System
Block Level Backup Engine S...	The Bluetoo...		Manual	Local System
Bluetooth Audio Gateway Se...	The Bluetoo...		Manual (Trigg...	Local Service
Bluetooth Support Service	The Bluetoo...		Manual (Trigg...	Local Service
Bluetooth User Support Serv...	The Bluetoo...		Manual (Trigg...	Local System
Capability Access Manager S...	Provides faci...	Running	Manual	Local System
CaptureService_5e1e620	Enables opti...		Manual	Local System
Cellular Time	This service ...		Manual (Trigg...	Local Service
Certificate Propagation	Copies user ...		Manual (Trigg...	Local System
Client License Service (ClipSV...	Provides infr...		Manual (Trigg...	Local System
Clipboard User Service_5e1e...	This user ser...	Running	Manual	Local System

Step 4: Click Start to launch the service.



Step 5: After running the service, select OK to finish.

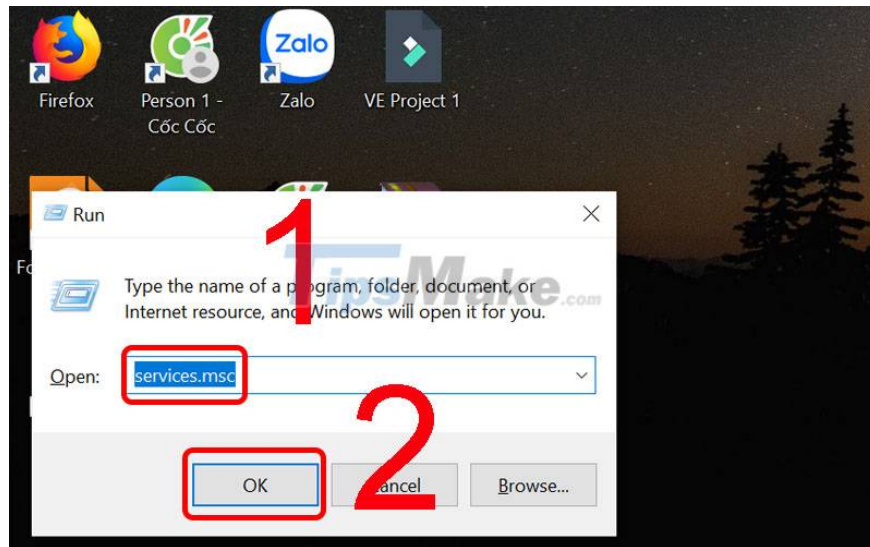


Set up Bluetooth Support service recovery options

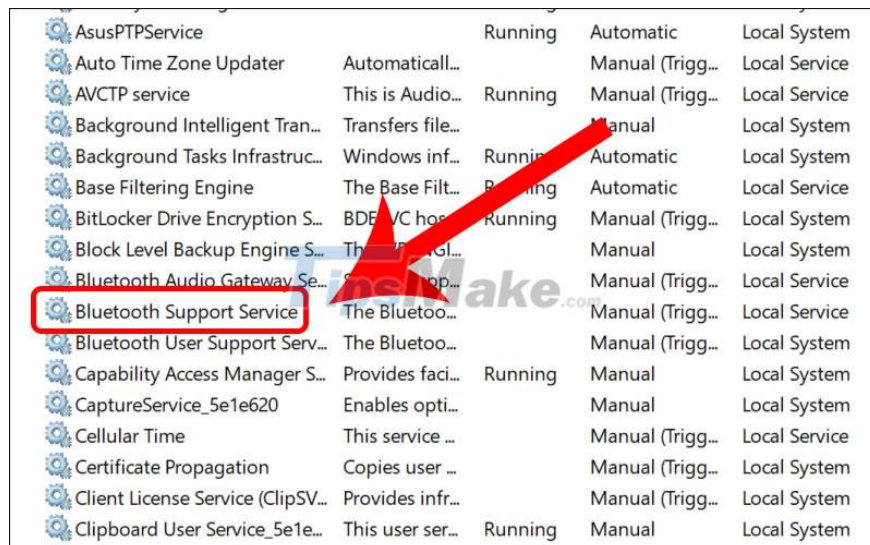
Step 1: Press the Windows + R key combination on the keyboard to open the Run dialog box.



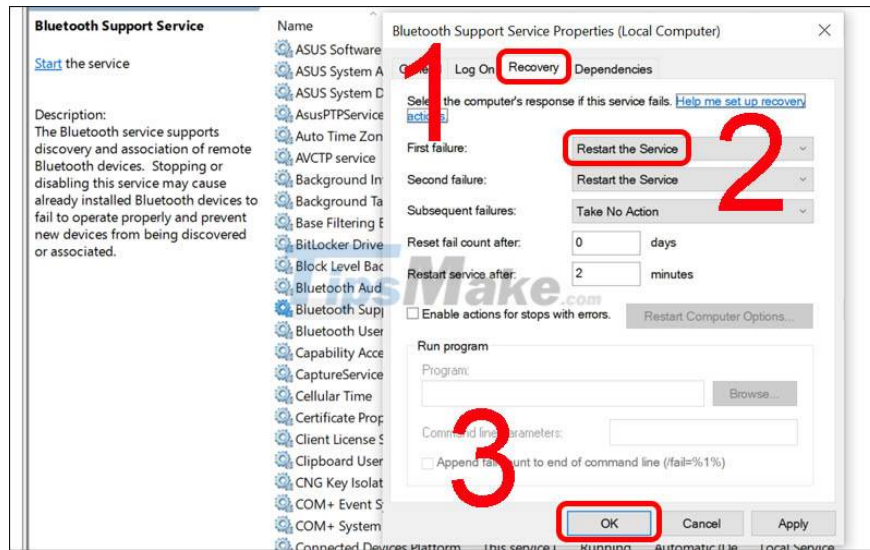
Step 2: Type services.msc > Click OK.



Step 3: Double click on Bluetooth Support Service.

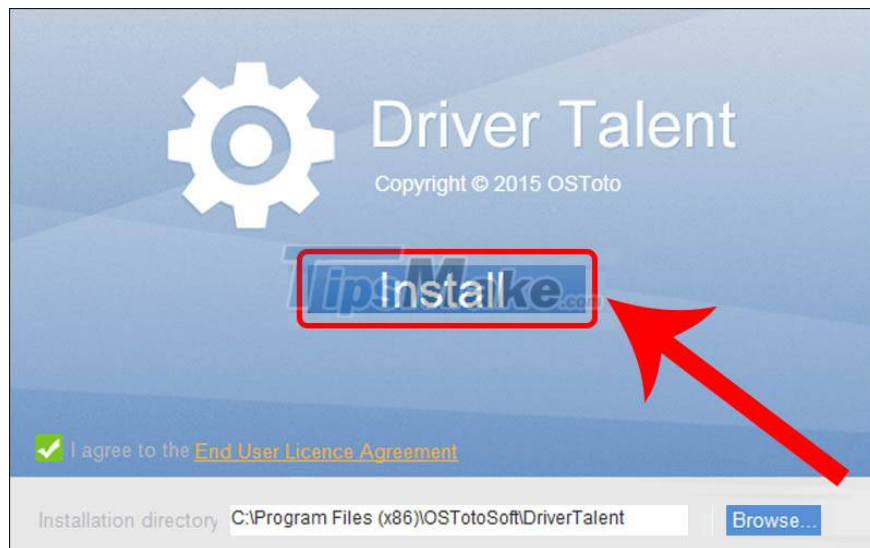


Step 4: Click the Recovery tab > Select Restart the Service > Select OK.

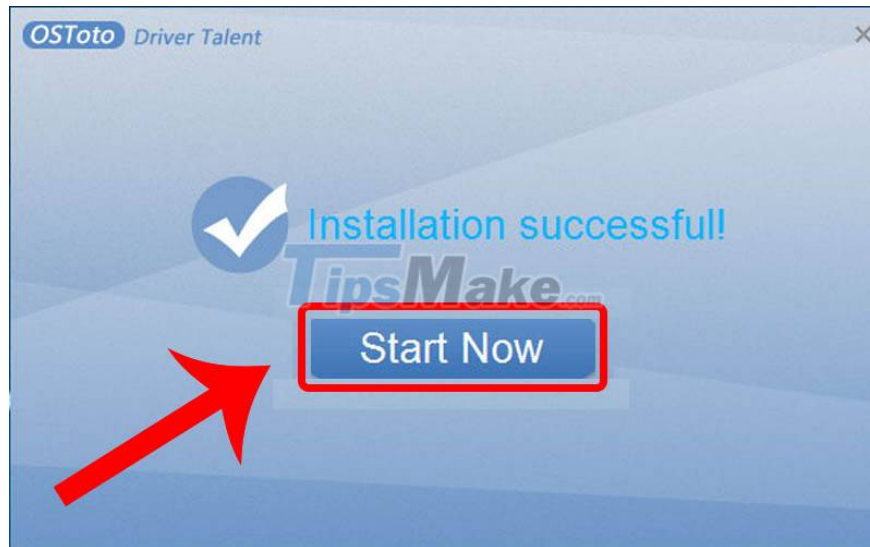


Fix Bluetooth Driver error

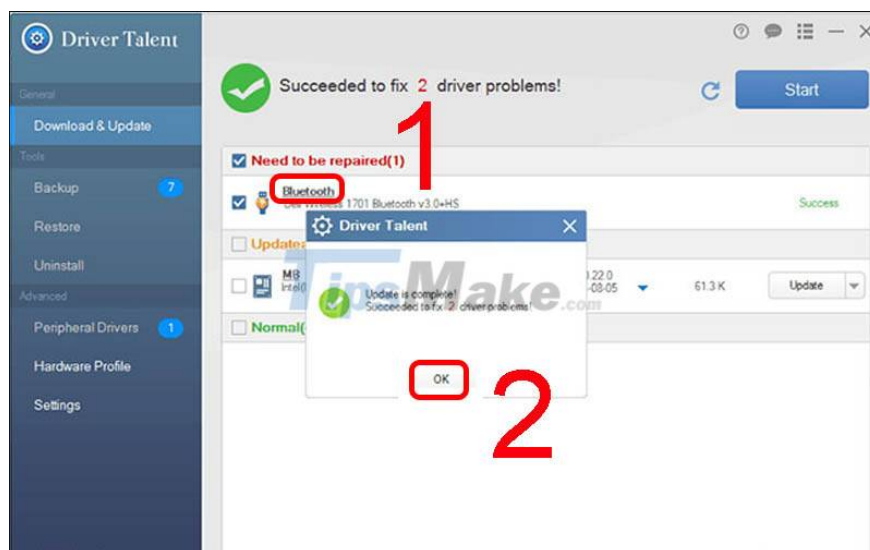
Step 1: Download Driver Talent to scan your computer.



Step 2: After successful installation, click Start Now.



Step 3: Click on the Bluetooth item to repair the driver > Click OK to complete.



Update Bluetooth Driver

Sometimes your computer has been upgraded and the old driver is no longer compatible. That's why Bluetooth can't find the device. So you need to download some software Easy driverpack, DriverEasy,. to update Driver for Bluetooth.

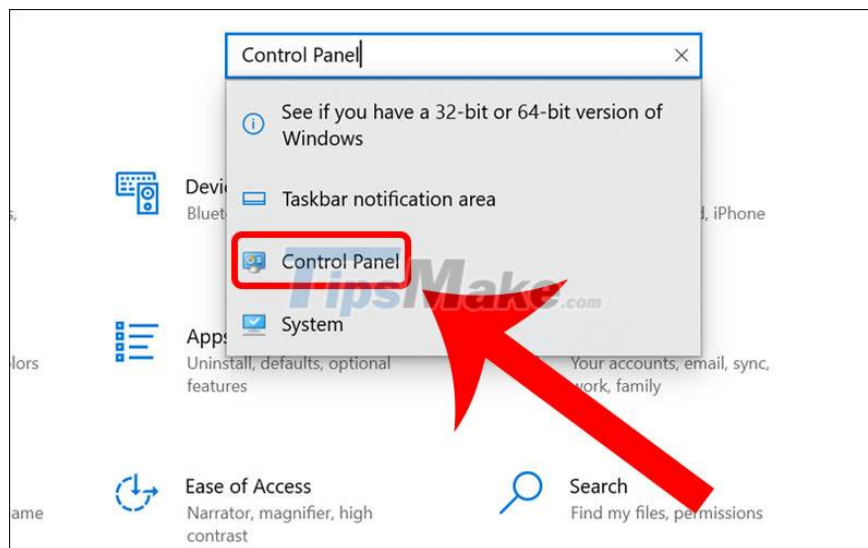
Remove suspicious software

Some malware causes Bluetooth to be affected and not working. Therefore you need to remove unused software so that Bluetooth can work again on your computer.

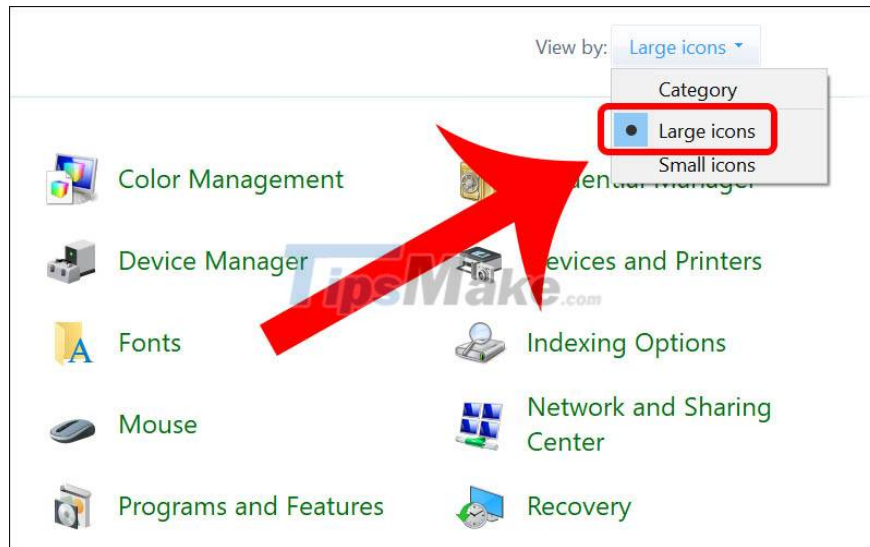


Fix errors with Windows Troubleshooting

Step 1: Open the Control Panel window.



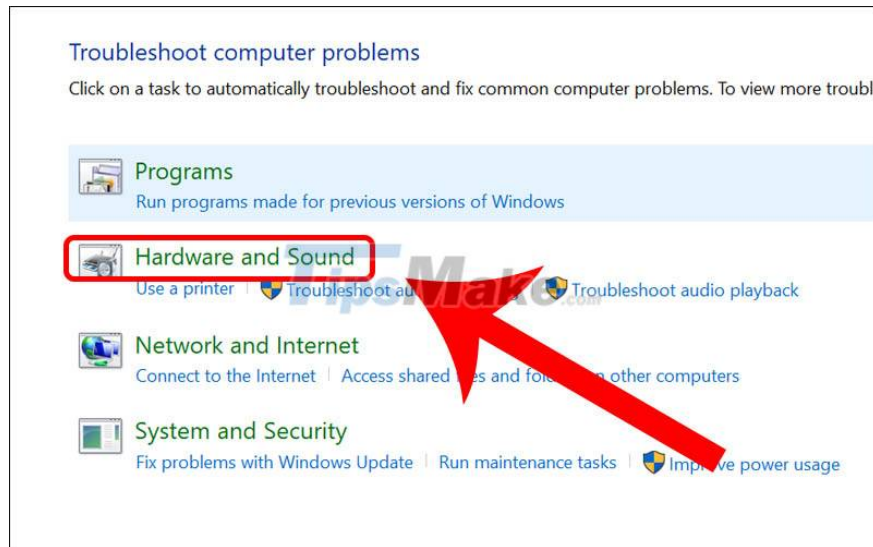
Step 2: Select Large icons in the left corner of the View by section.



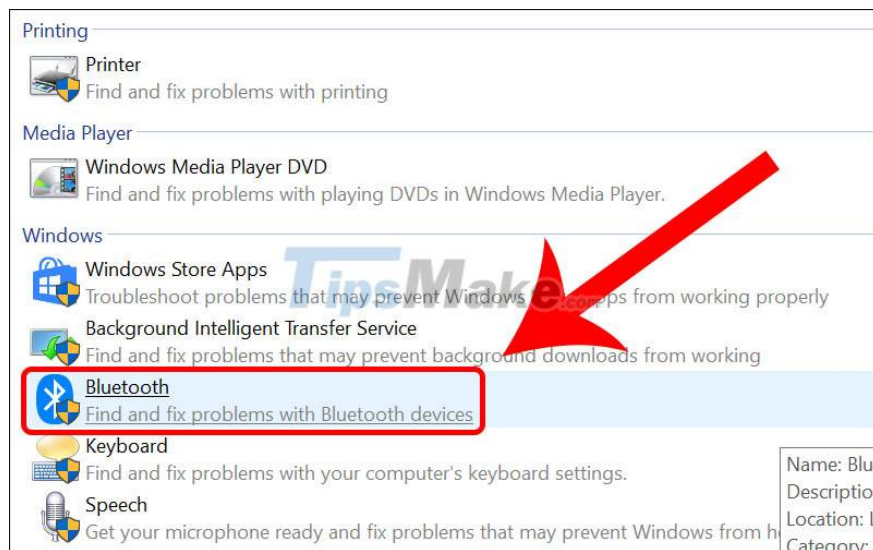
Step 3: Click on Troubleshooting.



Step 4: Click Hardware and Sound.

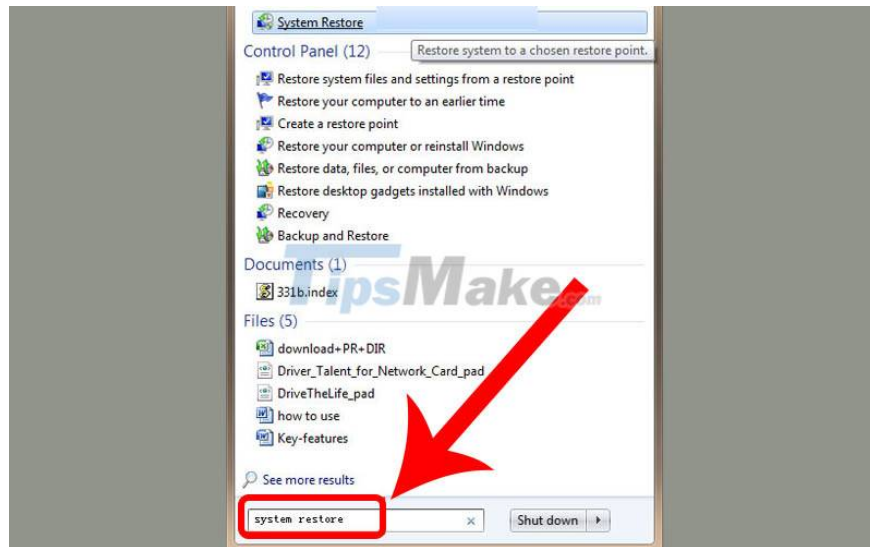


Step 5: Click on the Bluetooth icon then the Windows 10 operating system will automatically detect the cause of your laptop's error and complete.

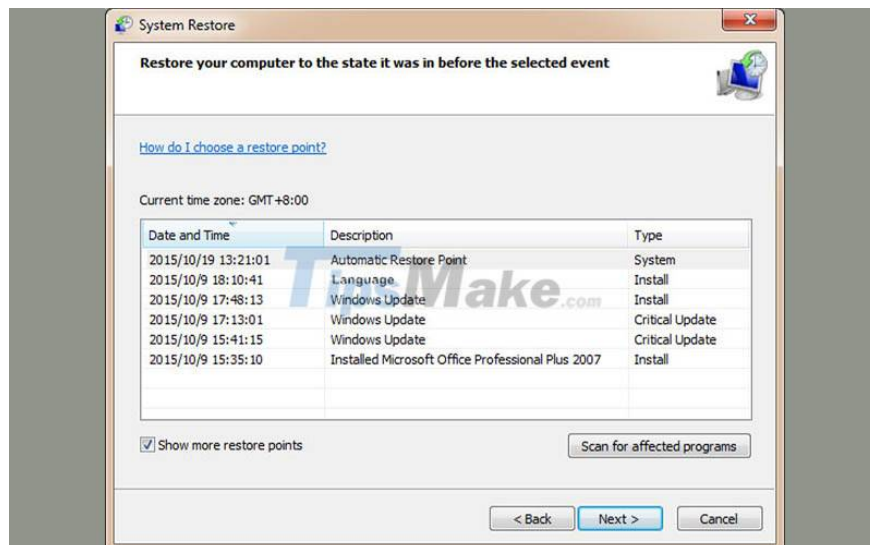


Perform a system restore

Step 1: Access System Restore.



Step 2: Select a restore point when Bluetooth is working properly.



Step 3: Confirm the restore point and wait for it to complete.

Add Device USB Bluetooth Adapter

To fix the Bluetooth error, it is necessary to add a new USB Bluetooth adapter device to the computer. Try Driver Talent to download and install the Bluetooth driver. Once done, you can connect Bluetooth to your computer.



This article has shown you how to fix Bluetooth error not present in Device Manager. See you in the next post!

You finished reading the article "**Steps to fix Bluetooth error not in Device Manager**" edited by the [TipsMake](#) team. We hope this article has provided you with many useful tech tips and tricks. You can search for similar articles on tips and guides. Thank you for reading and for following us regularly.