

Steps to export videos in Aegisub using Format Factory

Aegisub is a popular Sub creation tool on computers and they are often combined with many different software to output Videos. The most common is to use Aegisub in combination with Format Factory to create a complete Video.

The Aegisub tool only supports creating Sub on the computer and this means that they do not support exporting Videos out of the system. To export Videos on Aegisub, you will need the support of other software and mainly use Format Factory. Format Factory tool is known as the most effective video export software with sub on the computer today.

The features on Format Factory are also very extensive and support a variety of different needs of users. Here's how to export Videos in Aegisub using Format Factory.

1. Prepare

Before working, you will need to prepare the following things:

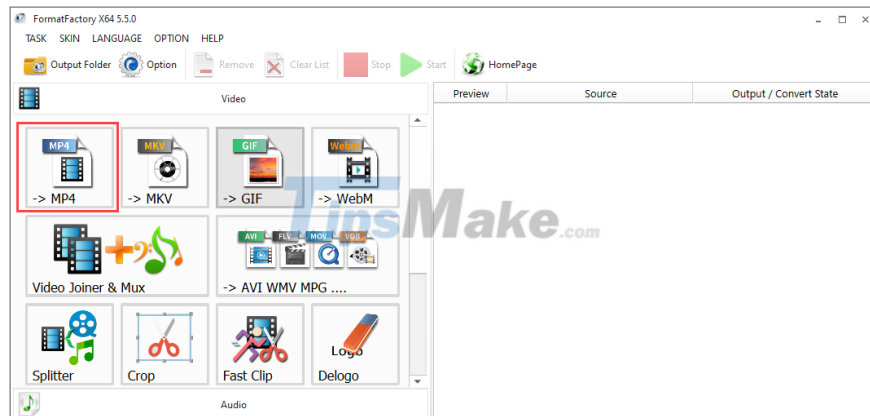
1. Format Factory software
2. Sub file exported from Aegisub (File -> Save As.)
3. Raw Video files need to be merged Sub

To download Format Factory software, you can visit the [homepage here](#) to download the latest version completely free.

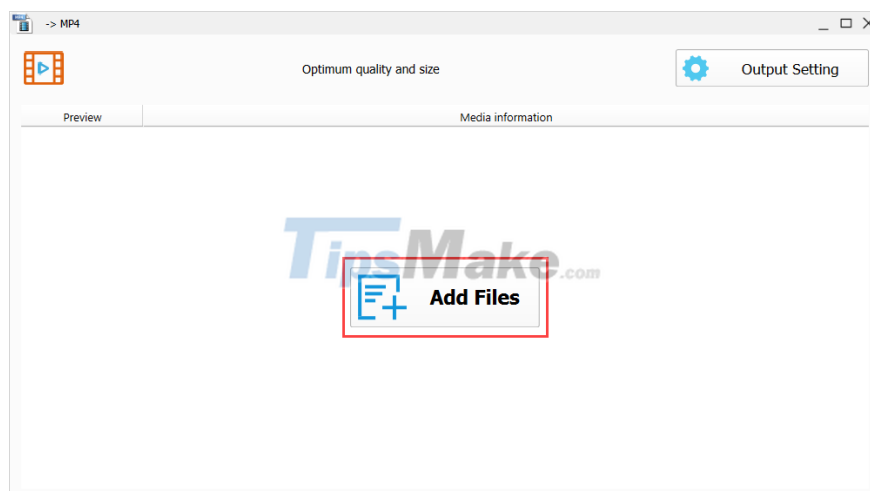
2. How to export videos in Aegisub using Format Factory

You proceed to visit the Format Factory homepage to download the software to your computer and install it similar to other software.

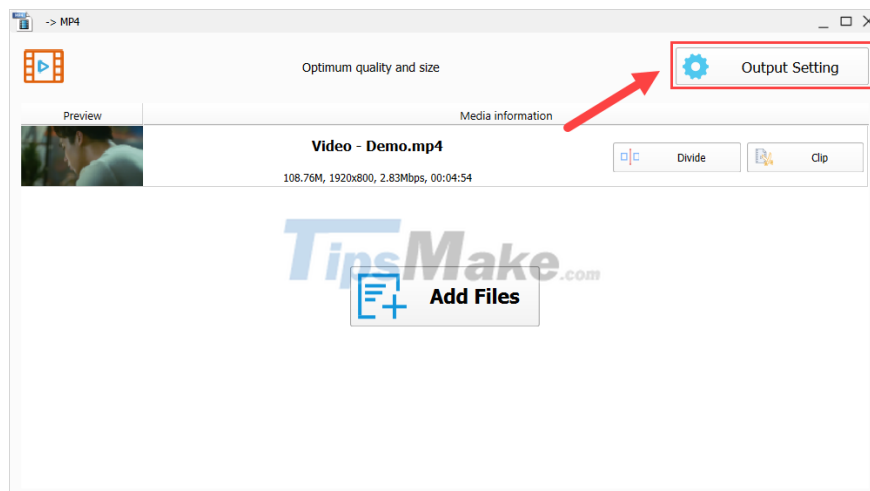
Step 1: At the main interface of Format Factory, you proceed to **select the MP4 item** to output the Video file.



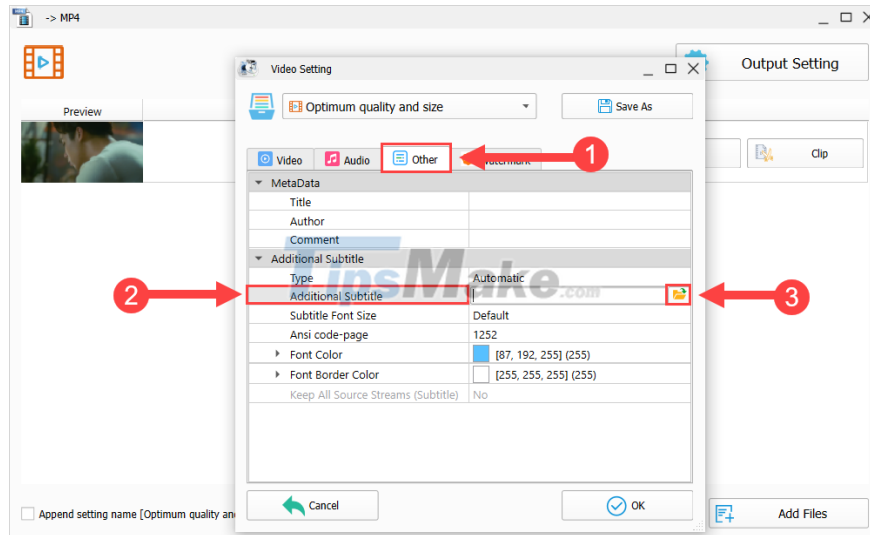
Step 2: Next, you select the **Add File** item to proceed with adding Video files that need to be added Sub from Aegisub to the system.



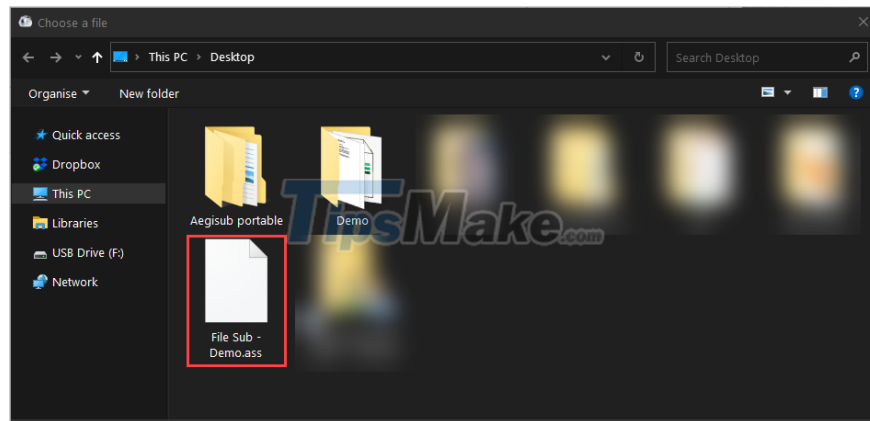
Step 3: After the Video file is added in the system, you select the **Output Settings** item to open the Video rendering settings.



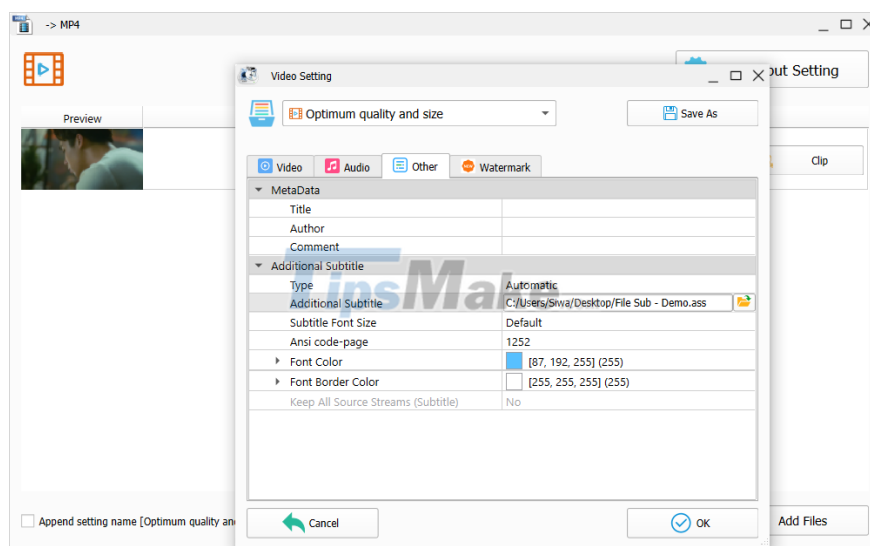
Step 4: In the *Video Setting* window, you proceed to select the **Other** tab (1) to find **Additional Subtitle** (2) and select **Browse** (3) to open the Sub file from Aegisub.



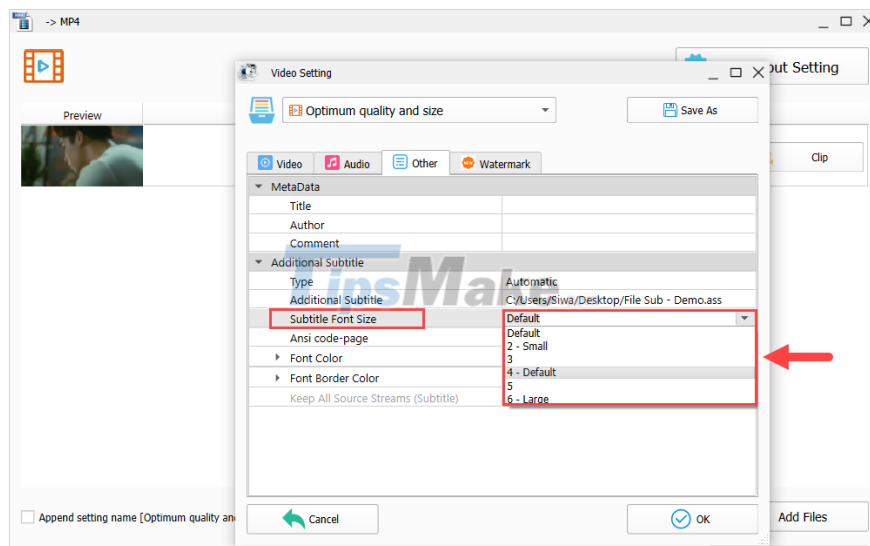
Step 5: Now, please proceed to **select the Sub file** exported from Aegisub software (format: .srt, .ass, .ssa).



Step 6: So, you have finished adding the Sub file from Aegisub into the Video. However, we will need to set up a few more things to make Sub more beautiful.



Step 7: To change the size of the Sub text, select the **Subtitle Font Size** item and proceed to select the available size levels.

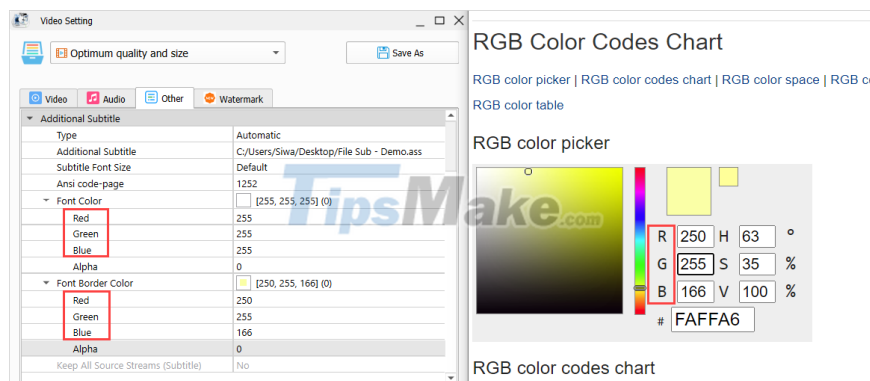


Step 8: Next, you can change the font color (**Font Color**) and text border color (**Font Border Color**), but to change this color you need to rely on the RGB color palette.

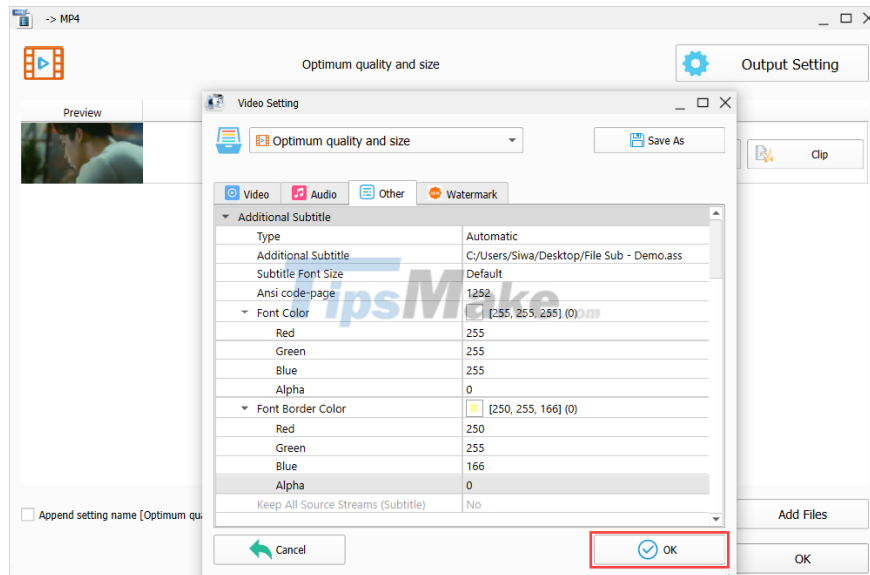
To know what RGB color has a code, please visit the Web site below and choose the color to use to display the code. Then, you proceed to enter the corresponding code into Format Factory.

Home: RGB Palette Code

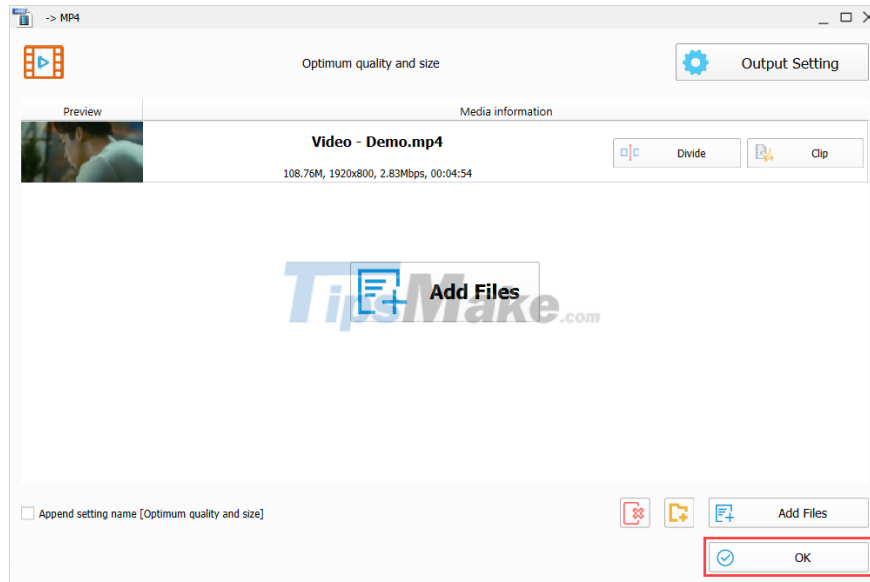
1. R - Red
2. G - Green
3. B - Blue



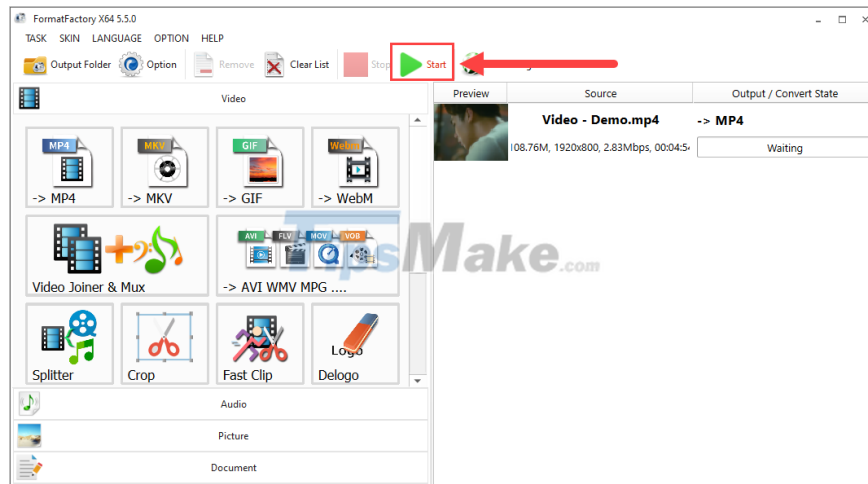
Step 9: After completing the settings, click **OK** to finish.



Step 10: You proceed to click **OK** at the MP4 window to move to the next step.



Step 11: At the main interface of Format Factory, you proceed to select Start to export the sub-coupled Video from Aegisub.



Thus, you have finished exporting Videos from Aegisub with the Format Factory tool.

In this article, Tipsmake showed you how to export videos in Aegisub using Format Factory quickly and effectively. Have a nice day!

You finished reading the article "**Steps to export videos in Aegisub using Format Factory**" edited by the [TipsMake](#) team. We hope this article has provided you with many useful tech tips and tricks. You can search for similar articles on tips and guides. Thank you for reading and for following us regularly.