

Steps to enable/disable Power Throttling in Windows 10

With Power Throttling, when a background task is running, Windows puts the CPU in the most energy-efficient mode of operation - the job is done, but the battery used for it is minimal.

Most people running Windows love to have multiple apps running at once, and oftentimes, what's running in the background can drain your battery.

You may remember some of the battery tests that Microsoft did in January 2017 with Windows 10 build 15002. Power Throttling was one of those tests and resulted in a savings of up to 11% on the power consumption of the device. CPU in some cases.

Power Throttling feature

In Windows 10 build 16176, Microsoft has leveraged modern silicon capabilities to run background tasks in a power-efficient manner, thereby significantly improving battery life, while still allowing users to take advantage of multitasking capabilities. powerful responsibility of Windows. With Power Throttling, when a background task is running, Windows puts the CPU in the most energy-efficient mode of operation - the job is done, but the battery used for it is minimal.

How does Power Throttling work? To deliver great performance for the apps you're using, while regulating background power, Microsoft has built a sophisticated detection system on top of Windows. The operating system determines the work that is important to you (foreground applications, music applications, as well as other important work categories inferred from the needs of the running application and the applications with which the user interacts). works). While this detection works well for most apps, if you happen to notice an app negatively affected by Power Throttling, Microsoft really wants to know! You can do 3 things:

Step 1. Provide feedback. Run Feedback Hub and submit feedback in the category Power and Battery > Throttled Applications.

Step 2. Control Power Throttling system-wide, using Power Slider. Windows works hardest to keep the processor within its effective range when you've selected Battery saver, Better battery, or Better Performance, and turns it off completely when you select Best Performance.

Step 3. Deselect individual apps from Power Throttling by unchecking Let Windows decide when this app can run in the background in Battery usage by app and Reduce work app does when in background.

Starting with Windows 10 version 1709, you can enable or disable Power Throttling. If you enable Power Throttling, users will be able to apply their own Power Throttling settings as outlined above.

Starting with Windows 10 build 21364, Task Manager has an experimental new feature called Eco mode, which gives users an option to save process resources.

Next, this guide will show you how to enable or disable Power Throttling for all users in Windows 10.

Note:

1. You must be logged in with admin rights to enable or disable Power Throttling.
2. Power Throttling is currently only available to processors with Intel's Speed Shift technology, available in Intel's 6th generation (and later) Core processors - Microsoft is also working to expand support for other processors in the near future.

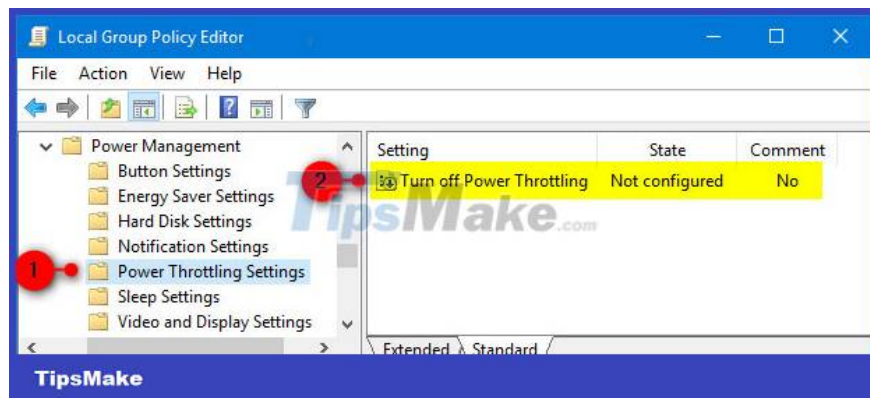
Enable/disable Power Throttling using Local Group Policy Editor

Local Group Policy Editor is only available in Windows 10 Pro, Enterprise, and Education editions.

Step 1. Open the Local Group Policy Editor.

Step 2. In the left pane of Local Group Policy Editor, navigate to the location below.

Computer Configuration/Administrative Templates/System/Power Management/Power Throttling

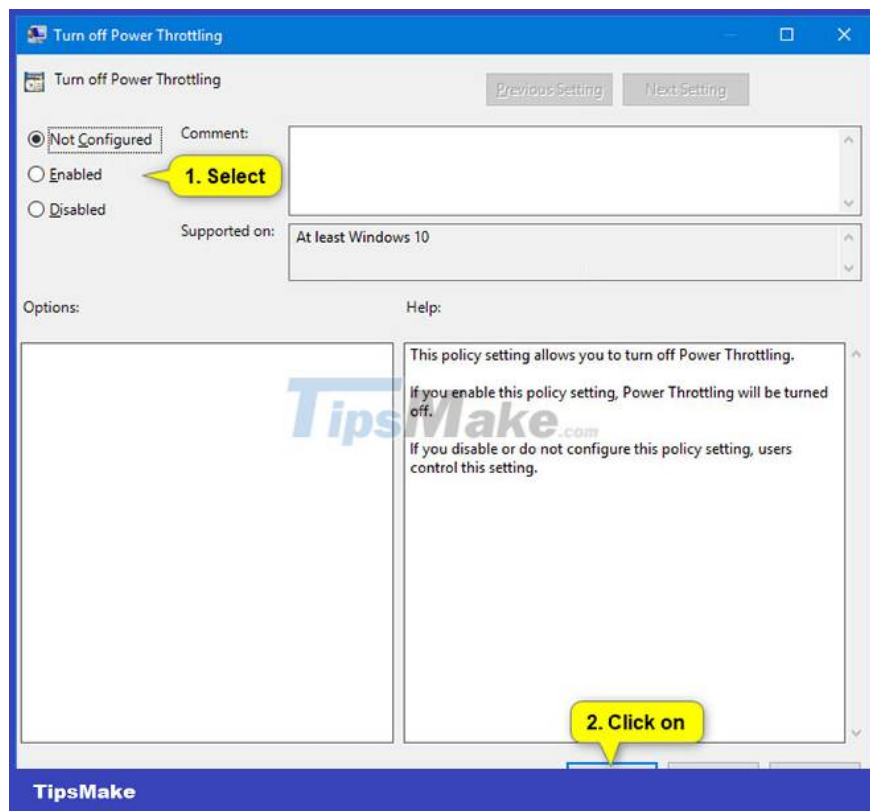


Step 3. To the right of Power Throttling Settings in the Local Group Policy Editor, double-click the Turn off Power Throttling policy to edit it.

Step 4. Do step 5 (to enable) or step 6 (to disable) below, depending on what you want to do.

Step 5. To enable Power Throttling, select Not Configured or Disabled, click OK and go to step 7 below. Not Configured is the default setting.

Step 6. To turn off Power Throttling, select Enabled, click OK and go to step 7 below.



Step 7. Close the Local Group Policy Editor.

Step 8. Restart the computer to apply the changes.

You finished reading the article "**Steps to enable/disable Power Throttling in Windows 10**" edited by the [TipsMake](#) team. We hope this article has provided you with many useful tech tips and tricks. You can search for similar articles on tips and guides. Thank you for reading and for following us regularly.